

Established 1840

Anderson & Garland Auctioneers

**THE JEWELLERY,
WATCHES & SILVER
AUCTION**

**THE COUNTRY HOUSE
&
FINE INTERIORS AUCTION**



Upcoming Auction Calendar 2022

May

The Book Auction - 4th & 5th

The Comics Auction - 18th & 19th

June

The Music Auction - 15th

Modern Art & Design - 16th

The Collectors' Auction - 29th & 30th

(Featuring: Books, Toys, Sport & Sporting Memorabilia,
Advertising & Entertainment, Stamps & Coins, Militaria,
Costume & Textiles)

July

Fine Silver, Jewellery & Watches - 19th

Summer Country House & Fine Interiors - 19th, 20th & 21st

We are welcoming entries for our upcoming auctions.

**Our team of experts are on hand Monday to Friday 9am-4pm
offering free advice and assessments on items that you're
thinking of selling.**

To arrange an appointment please contact:

Telephone: (0191) 430 3000

Email: info@andersonandgarland.com

Anderson House, Crispin Court,
Newbiggin Lane, Westerhope,
Newcastle, NE5 1BF

THE JEWELLERY, WATCHES & SILVER AUCTION THE COUNTRY HOUSE & FINE INTERIORS AUCTION

Tuesday and Wednesday
29th and 30th March 2022

Sale Reference No. MH224

Viewing Times:

Friday 25th March 10.00 a.m. - 4.30 p.m.

Saturday 26th March 10.00 a.m. - 1.00 p.m.

Monday 28th March 10.00 a.m. - 2.00 p.m.

To include items removed from Deceased estates and Private Vendors in Hexham, Carlisle, Berwick, Morpeth, Sunderland, Haltwhistle, Gosforth and other parts of Tyne & Wear, Northumberland, Alnwick, Wooler and Durham, North Yorkshire and the Scottish Borders.

Anderson House,
Crispin Court,
Newbiggin Lane,
Westerhope,
Newcastle, NE5 1BF

Telephone: (0191) 430 3000

General Enquiries: info@andersonandgarland.com

Condition Reports and Image Requests:

condition@andersonandgarland.com

Auction Bids to be sent to: bids@andersonandgarland.com

Cover Illustration: Lot 196

Anderson & Garland Ltd. registered in England and Wales
no. 2717623





A message from our Managing Director

A sensational start to the year here at Anderson & Garland.

Our Modern Art & Design Auction on Thursday 27th January included an original work of art by the street artist Banksy 'The Merrivale Stable'. The pre-sale international media interest was enormous. On sale day, after a bidding battle on the telephones, it sold to an anonymous UK buyer, for over £1million pounds (inc fees). This smashed our previous in-house record and is the most expensive work of art ever sold in the North East. Moreover, it will probably be one of the most expensive works of art to be sold outside of London this year. Our motto 'local service, international prices' has never been truer.

We've already held 10 auctions this year, ranging from Musical Instruments to Collectors' Items. In early March, we launched our new Antique Costume and Textiles department, which is already proving very popular with our customers and a fantastic addition to A & G's specialist portfolio. Please turn to the recent highlights pages to see some of our successes since December.

Looking ahead, we have an exciting programme of auctions over the Spring/Summer period, with 19 sales before the end of August! We are welcoming entries to all of these. Please see our website for more details. If you would like a free, no obligation valuation, please don't hesitate to get in touch.

21st Century living can be extremely busy, therefore, after a successful trial period and very positive customer feedback, we are pleased to announce that clients can now book face-to-face valuation appointments online via our website. We are also now booking virtual/video appointments via WhatsApp.

With the lifting of Covid restrictions, we are working towards the re-opening of Anderson & Garland Café on viewing days later in the Spring. We know how much many of you have missed this service, so watch this space.

As ever, I'd like to thank you all for your continued support.

Julian Thomson
MRICS ASFAV
Chairman and Managing Director, Anderson & Garland Ltd

With the intent of keeping our carbon footprint low all paper stock used in the production of this catalogue is from FSC suppliers and non-hazardous inks used. The catalogue has also been produced in compliance with the environmental standard ISO 14001.

For more information regarding the production of FSC papers please visit the FSC website www.fsc-uk.org and www.twosides.info for information about sustainable print.

When you have finished with your catalogue please recycle it inline with your local regulations.

Meet our Team



Julian Thomson
Clocks & Furniture
Tel: (0191) 430 3014

j.thomson@andersonandgarland.com



Fred Wyrley-Birch
Silver & Jewellery
Tel: (0191) 430 3013

fredwb@andersonandgarland.com



John Bullock-Anderson
Books
Tel: (0191) 430 3012

j.anderson@andersonandgarland.com



Nigel Smith
Ceramics & Glass
Tel: (0191) 430 3009

n.smith@andersonandgarland.com



Georgina Norman
Pictures
0191 430 3018

g.norman@andersonandgarland.com



Hannah Murphy
Homes & Interiors
0191 430 3017

h.murphy@andersonandgarland.com

Directors

Julian Thomson – Chairman and Managing Director
Fred Wyrley-Birch – Director
Alison Orgill – Director and General Manager

Private Clients, Probate and Insurance Valuations

Julian Thomson, Fred Wyrley-Birch,
John Bullock-Anderson, Nigel Smith, and
Georgina Norman

Country House Valuations

Julian Thomson

Homes & Interiors Auctions

Hannah Murphy

Marketing/Public Relations

Olivia Telfer

Client Services

Jeanette Johnston, Zoe Romer,
Helen McKenna, Carly Mahoney
and Lynn Scott

Saleroom Team

Tony Gilroy, Michael Hearn and
Mark Connolly

Catalogue photography:
James McCoull and Adam Barr

Catalogue Printing:
Pardy & Son (Printers) Ltd -
01425 471433

Bid with 'A&G Live'

Experience the thrill of the auction from the
comfort of your home



www.andersonandgarland.com

Register today and bid for just 2% (+VAT)

*T&Cs apply. All charges are in addition to standard buyer's premium. Please note, all auctions are also available via the-saleroom.com at 6% (+VAT). Purchases made via the-saleroom.com are subject to the-saleroom's T&Cs & separate charges apply.

Recent Highlights



Banksy (b.1974)
The Merrivale Stable
Wood and fibre-glass construction, contained within perspex boxes
Sold for **£1,000,000** (inc fees)



Recent Highlights



A Flight, Barr and Barr Worcester Dessert service
Sold for £3200 (inc fees)



Norman Stansfield Cornish (1919-2014) "Gurney Valley, Co. Durham" Signed watercolour
Sold for £5300 (inc fees)



A single stone diamond ring, the princess-cut diamond measuring 7.24 x 7.19 x 5.59mm
Sold for £7000 (inc fees)



A solitaire diamond ring
Sold for £65000 (inc fees)



A Rolex stainless steel Oyster Perpetual Sea-Dweller 'Great White' bracelet watch
Sold for £11000 (inc fees)



A 19th Century miniature military chest of drawers
Sold for £4100 (inc fees)

All lots are subject to a Buyer's Premium of 22% plus VAT (26.4% in total)

Recent Highlights



A George III ebonised repeating bracket clock, by James Smith, London, verge escapement
Sold for £3200 (inc fees)



Lorenzo Quinn - A bonded bronze on black marble 'Rose'
Sold for £2700 (inc fees)



William Prevost, Newcastle
A very rare late 17th Century three train walnut longcase clock
Sold for £13900 (inc fees)



Faile (Patrick McNeil and Patrick Miller)
Acrylic and silkscreen ink on paper
Sold for £2100 (inc fees)



A stainless steel Rolex Oyster Perpetual Date 'Red Writing' Submariner bracelet watch
Sold for £17500 (inc fees).

Order of sale

FINE JEWELLERY, WATCHES & SILVER AUCTION

Tuesday 29th March 2022

at 10.00am

Watches

Lots 1- 47

Jewellery

Lots 49-141

at 12.15pm

Plated Items

Lot 143

Antique Silver

Lots 144-157

Modern Silver

Lots 158-164

Foreign Silver

Lots 166-175

Objects of Vertu

Lots 176-187

THE COUNTRY HOUSE & FINE INTERIORS AUCTION

Day One, Tuesday 29th March 2022

at 1.00pm

Prints

Lots 189-194

Watercolours and Drawings

Lots 195-249

Oil Paintings

Lots 252-317

at 2.45pm

Rugs & Carpets

Lots 318-418

Day Two, Wednesday 30th March 2022

at 10.00am

Asian Art

Lots 419-501

British Ceramics

Lots 503-530

European Ceramics

Lots 531-538

Glass

Lots 539-547

at 12noon

Clocks & Barometers

Lots 549-569

Furnishings

Lots 570-598

Furniture

Lots 600-655

at 1.30pm

Car

Lot 658

Vintage Wine, Whisky & Champagne

Lots 659-678

Books

Lots 680-808

THE FINE JEWELLERY, WATCHES & SILVER AUCTION

Tuesday 29th March 2022
at 10.00am

Jewellery Notice: Weights and measurements are approximate guidelines only. Photographs are not true representations of size or colour and are shown as a guide only. **Coloured Gemstones** including **Jade** are often treated as common practice. This may affect their durability or need further treatment at a later date. As it is not possible for Anderson & Garland Ltd to obtain gemmological reports for all lots please assume all stones have been so treated unless otherwise stated.



Watches



1
Rolex Precision: an 18ct yellow gold cased wristwatch, the gilt dial with baton and triangular numerals and central seconds hand, fitted a manual wind 17-jewel movement no. N19053, the case stamped G8940 to interior and 349025, 3.6cms wide, with later gilt metal flexible strap.

£1,000-2,000



2
Omega Electronic F300hz Chronometer: a gilt steel cased wristwatch, the gilt baton dial with central seconds hand and date aperture, fitted an unadjusted 12-jewel movement, cal-1250, no.34846419, the case interior stamped '198.030', 4.0cms wide, the later black leather strap with gilt metal Omega buckle.

£150-250



3
Tudor Oyster-Prince 31: a steel cased automatic wristwatch, the arabic dial with central seconds hand, fitted a Rotor Self-Winding Tudor Auto-Prince Junior 18-rubies movement, the case with original Oyster Patent wider and presentation inscription dated 1957, stamped '7810 158126', 3.4cms wide.

£200-300



4
Edward Prior, London: a mid-19th Century quadruple cased pocket watch for the Turkish market, the signed white enamel dial with arrow numerals, fitted key-wound fusee movement, no.66821, the case dated London 1851, in white metal case with hammered edge, the third case with tortoiseshell and metal studded design, the outer case with embossed floral decoration, 7cms wide (outer case).

£300-500



5
Tudor Oyster Royal: a steel cased wristwatch, model no. 7934, the silvered dial with arabic numerals and central seconds hand, fitted a manual wind 17-rubies movement, the Rolex Oyster case interior numbered 7934, serial no. 473***, case 3.8cms (with winder), with leather strap.

£200-300



6
Bueche Girod: a 9ct bi-coloured gold lady's cocktail watch, the silvered dial with baton numerals, fitted a manual wind movement, the bark pattern strap in rose and yellow gold, 17.5cms long, 26.6g gross, cased.

£200-300



7

Franck Muller Cintree Curvex: an 18ct yellow gold cased automatic wristwatch, circa 1994, the silvered arabic dial with subsidiary seconds aperture, the case back stamped 'S 02, 285 S6', 4.5 x 3.2cms, on black leather strap with 18ct yellow gold buckle, in burr wood and ebony case.

Note: It has been confirmed by Franck Muller that this watch was just the 2nd of a series of 100 of this model. They were shipped to Malaysia Singapore, where it became part of the collection of HRH Prince Jefri Bolkiah of Brunei. His entire collection and personal holdings were handed over to the Brunei Government after he was accused for embezzling \$14.8billion in 2000.

£12,000-15,000



8

Stauffer & Sons: an 18ct yellow gold open faced pocket watch, the white enamel roman dial with subsidiary seconds dial, fitted crown-wind movement no.132971, monogram engraved to back of case 'SIM', 5.0cms wide, 90.6g gross, in case retailed by Charles Taylor & Co, Bristol Goldsmith Alliance.

£500-700



9

G. Lannier, Geneva: an 18ct yellow gold cased open faced fob watch, the floral decorated gilt dial with roman numerals, fitted a key-wound movement, the floral decorated case with metal dust cover, 3.5cms wide, 28.3g gross.

£180-250



10

Rolex Precision: a 9ct yellow gold cased wristwatch, the silvered arabic dial with subsidiary seconds aperture, fitted manual wind 17-jewel movement (over-wound), marked Montres Rolex Geneve Swiss, no.N58918, the Dennison case Birmingham 1960, no. 12868 100022, the later leather strap with plated Rolex buckle, case 3.3cms wide.

£400-600



11
J.W. Benson, London: an 18ct yellow gold open faced pocket watch, the white enamel roman dial with subsidiary seconds dial, fitted crown-wind movement inscribed 'The Bank M4859'; case no.4889, dated 1924, monogram engraved to back of case 'CHS', 4.6cms wide, 97.1g gross, cased.
£700-1,000



12
An 18ct yellow gold cased open faced pocket watch, the gilt roman dial with applied floral swag design, fitted a key-wound movement no.1396, the case dated Chester 1860, with engine turned and floral engraved design, 4.3cms wide, 71.0g gross.
£500-800



13
James Stillton, London: a mid 18th-Century silver pair cased pocket watch, the silver roman dial with arabic seconds bezel and date aperture, fitted a key-wound fusee movement signed and no.56**, the case by TR, London 1754, the associated outer case by IR, London 1777, 5.2cms wide, 121.5g gross.
£300-500



14
Elgin Watch Co, U.S.A.: a 14ct yellow gold cased hunter pocket watch, the white enamel roman dial with subsidiary seconds aperture, fitted a crown-wind movement no.5486564, the gold dust cover and outer cover stamped '723422', the case with floral decoration, 5.5cms wide, 129.4g gross.
£200-300



15
Samuel Alexander & Son, London: a 9ct yellow gold cased open faced pocket watch, the gilt floral engraved roman dial with subsidiary seconds aperture, fitted a key-wound movement engraved 'Chronometer Makers to the Admiralty, the dust cover signed and no.92565, the case by JR, Birmingham 1918, engraved with vacant cartouche and stylized leaf decoration, 5.2cms wide, 125.6g gross.
£200-300



16
Rolex Oyster Perpetual Explorer: a stainless steel cased automatic wristwatch, ref 1016, serial no. 3481*, circa 1973, the black 369 and baton dial with central seconds hand, fitted a 26-jewel automatic movement, cal 1570, movement no.513585, on Oyster steel strap with 358 ends, one end link stamped 7836; with a Rolex Oyster booklet.
£5,000-8,000



17

17

An Omega Constellation Chronometer

Electronic F300Hz wristwatch, the baton dial with date aperture, fitted a quartz movement cal-125, serial no. 32674366, in an 18ct yellow gold case, circa 1971, stamped 198 003, on later brown leather strap, case 3.6cms wide.

£200-400

18

An Omega Constellation Chronometer

wristwatch, the baton dial with subsidiary date aperture, fitted an automatic movement, in gilt steel case, on original graduated link strap, case 3.1cms wide (including winder).

£200-300



18

19

A Longines Automatic Conquest wristwatch,

triangular baton numerals to dial, fitted an automatic movement, in gilt steel case, with later black leather strap.

£200-300



19

20

Mappin: an Art Deco 18ct yellow gold pocket

watch, the mother-of-pearl dial with arabic numerals and subsidiary seconds dial, fitted a crown-mound 15-jewel movement with 4 adjustments, no.34976, 4.2cms wide, 55.3g gross.

£400-600

21

Tudor Prince Oysterdate: a gilt-steel cased

automatic wristwatch, the champagne baton dial with date aperture and central seconds hand, fitted a Rotor self-winding movement (balance detached), in Rolex Oyster case no.656131 and 720641, 3.8cms wide, with leather strap.

£300-500

22

An 18ct yellow gold cased open faced pocket

watch, the white enamel roman dial with subsidiary seconds aperture, fitted crown-wound movement no.26874, in a plain case by MK, London 1931, 5.1cms wide, 102.7g gross.

£600-800

23

An 18ct yellow gold cased open faced fob

watch, the white enamel dial with purple roman numerals and gilt decoration, fitted a crown-wound movement, the case stamped '12842 3' and engraved with floral designs and vacant cartouche, 3.6cms wide, 33.3g gross.

£100-150



20



21



22



23



24

24

Omega: a steel cased automatic wristwatch, the silvered baton dial with date aperture and central seconds hand, fitted a 24-jewel automatic movement cal565, no.31915839, the case with engraved presentation inscription dated 1972, 3.8cms wide, on flexible strap, with warranty booklet.

£100-200



25

26

Rolex: a diamond cocktail watch, c.1930s, the arabic dial signed 'Rolex Geneve', fitted a 17 ruby manual wind movement, the case engraved 'Platinum' set with graduated eight-cut diamonds, on later snake link 9ct white gold strap, by J.G&S Birmingham 1961, the case 1.5cms wide, 14.7g gross (without movement).

£1,000-1,500



26

28

Kutchinsky for Chopard: an 18ct yellow gold dress watch, the gilt dial with no markings signed 'Chopard Geneve', fitted a manual wind 17 jewel movement, the case import marks dated 1972, case back stamped '2027 1 50785', the strap with shaped links joined by textured bands, 128.1g gross including movement, cased.

£2,000-3,000

25

Omega Professional Seamaster Mark II: a stainless steel cased wristwatch, the black baton dial with three subsidiary dials and tachymetre to bezel, fitted manual-wind 17-jewel movement no.30587200, the Seamaster case back stamped '2750/67, 145.014', on a tapering Omega link strap (with two spare links), 4.5cms wide, in Omega service pouch.

£1,300-2,000

27

Rolex Oyster Perpetual Datejust Superlative chronometer: a stainless steel cased lady's wristwatch, model 179171, serial no. G8777**, circa 2010, the purple-toned dial with diamond numerals and date aperture, the case with gold bezel and winder, fitted an automatic 31-jewel movement, cal 2235, case interior stamped 2320, on steel/gold link strap, with guarantee card, bar-code tag, seal tag, case and outer card box.

£2,000-3,000

29

Tressa Incabloc: an 18ct yellow gold cased wristwatch, the silvered baton dial fitted a manual wind 17 jewel movement, the case stamped '309', on leather strap.

£100-200



27



28



29



30
Omega Dynamic: a steel cased lady's wristwatch, the blue and silver baton dial with date aperture, fitted an automatic movement, on white leather strap, case 3.0cms wide.
£100-200



31
Rolex Oyster Perpetual Superlative Chronometer: a lady's stainless steel cased automatic wristwatch, the metallic grey baton dial with central seconds hand, fitted a 31-jewel automatic movement cal 2231, no.1S184403, the case stamped 2320 and 'Orig Rolex Design 176200', 2.9cms wide, with Rolex graduated link strap.
£1,000-2,000



32
Parmigiani Fleurier: a stainless steel automatic calendar chronograph wristwatch, the blue dial with triangular batons, three subsidiary dials and date aperture, fitted a 28 jewel adjusted movement with 5 positions, PF316, serial no. 65178, the case 4.5cms wide, the leather strap with original buckle, with warranty card dated 13th July 2018, the leather case with watch mount and cufflink section, together with a leather wallet, in card box.
£2,500-3,500



33
An early 20th Century Swiss 18ct yellow gold cased open faced pocket watch, the white enamel roman dial with subsidiary seconds aperture, fitted a crown-wound movement, gold dust cover with presentation inscription 'Presented to Serg't Major W.Shingler on his retirement Mar. 6th 1907, 1st V/B Royal Berks Reg't', 5.0cms wide, 99.2g gross.
£600-800



34
Duward Aquastar: an 18t yellow gold cased quartz chronograph wristwatch, the white baton dial signed and marked 'Water Resistant 50M', with three subsidiary dials, date aperture and tachymeter to bezel, the case back with presentation inscription and Duward crest design, one lug stamped 'B614', 40cms wide, 65.6g gross.
£200-500



35
Avia Incabloc: a 9ct yellow gold cased automatic wristwatch, the silvered dial with triangular baton and arabic numerals, with date aperture, fitted 25-jewels automatic movement stamped 2472, the case by BWC, Edinburgh 1956, on black leather strap.
£150-250



36
Rolex Oysterdate Precision: a gilt-metal cased wristwatch, ref 6694 serial no.729871, the triangular baton dial with central seconds hand and date aperture, fitted a manual-wind movement cal.28212, the case stamped '6694', 3.8cms wide, on brown leather strap.
£400-600



37
Omega Seamaster: a stainless steel cased automatic wristwatch, the baton dial with central seconds hand, fitted a 20-jewel automatic movement cal 471 no.15518968, the case stamped 2802-6, on black leather strap.
£200-300



38
Tissot Seastar: a stainless steel cased automatic wristwatch, the silvered baton dial with central seconds hand a date aperture, fitted an automatic movement cal.784-2, no.14353518, the case stamped 44521-1, with black leather strap.
£100-200



39
Garrard & Co Ltd: a 9ct yellow gold cased wristwatch, the silvered arabic dial with subsidiary seconds dial, fitted a manual-wind Vertex 17-jewels movement, the Vertex case dated 1962, on leather strap, in original case.
£100-200



40
Rolex, Geneve: a 9ct yellow gold cased hunter pocket watch, the signed white enamel arabic dial with subsidiary seconds dial, fitted a crown-wound 17-jewel movement cal.634, the Dennison case dated Birmingham 1936 and stamped 616481, 4.9cms wide, 90.3g gross.
£400-600



41
Must de Cartier: a silver-gilt cased quartz wristwatch, the roman dial with date aperture, the case stamped 126319PL, 2.9cms wide, on brown leather strap with original hinged buckle, with box and booklets.
£300-500



42
Must de Cartier Vermeil Tank: a silver-gilt cased lady's wristwatch, the roman dial fitted a quartz movement, the case stamped 36424 5057001, 2.4cms wide, on brown leather strap.
£200-300



43
Certina, Blue Ribbon: an 18ct yellow gold cased automatic wristwatch, the silvered dial with central seconds hand and subsidiary date aperture, fitted an automatic 27 jewel movement no.25-651, case 3.5cms wide, on leather strap.
£100-200



44
Meuron & Comp: a yellow metal cased alarm and repeating pocket watch, the white enamel signed arabic dial fitted a key wound movement with both repeater action to push crown and an alarm with a central hand set by a wheel beside the dial, the dust cover stamped '23', the back with pierced design fitted a bell, 6cms wide, 159.5g gross.
£1,000-2,000



45
Omega Speedmaster Professional: a stainless steel cased wristwatch, 1970, the black dial with three subsidiary dials and central seconds hand, surrounded by tachymeter, 4.2cms wide, fitted an automatic movement, the inner case back stamped '145022-69 ST', on a replacement Omega strap; with the original strap stamped 'No13 1039 2/70'.
 Note: this watch was purchased by the vendor on his way to Antarctica where he spent two years working with the British Antarctic Survey.
£3,000-4,000



46
Ebel: an 18ct yellow gold cased cocktail watch, the white enamel roman dial fitted manual wind movement, the case stamped '867117 25', on black leather strap, case 2.2cms wide.
£200-300



47
J.W. Benson 62 & 64 Ludgate Hill, London, The Field: an 18ct yellow gold cased half-hunter pocket watch, the outer case cover with blue enamel arabic bezel over a white enamel arabic main dial with subsidiary seconds aperture, fitted a crown wound movement, no. R.9097, the case dated 1927, the case back engraved with monogram within garter cartouch, 5.0cms wide, 99.1g gross.
£600-900

48
 No Lot

Jewellery



49
An amber necklace, with polished main amber drop and strung knotted amber nuggets, pendant 3.6cms high, necklace 110cms long, 91.5g gross.
£200-300



53
A turquoise, enamel and diamond pendant, the pear-shaped turquoise measuring 24 x 21 x 5.9mm, surrounded by blue enamel panels and brilliant cut diamonds, in 18ct yellow gold mount and bale, 4.5cms high, 14.9g gross.
£300-500



56
A ruby and diamond ring, the oval facet cut ruby flanked by two brilliant cut diamonds weighing a total of approximately 0.80 carats, on white metal shank stamped '18ct', ring size N, 4.2g gross.
£300-500



50
An Edwardian moonstone, seed pearl and sapphire brooch, the two heart-shaped moonstone cabochons within seed pearl bezels, flanked by sapphire cabochons on yellow metal knife edge bar, 4.1cms wide, 3.8g gross.
£80-120



52
An emerald and diamond ring, the rectangular emerald measuring 6.1 x 4.3 x 3.5mm, flanked by two brilliant cut diamonds weighing a total of approximately 0.70carats, the white metal shank stamped '18ct', ring size N, 3.8g gross.
£400-600



54
A diamond dress ring, set with three graduated princess-cut diamonds surrounded by brilliant cut diamonds, on 18ct yellow gold shank, ring size P, 6.3g gross.
£600-800



57
An 18ct yellow gold and diamond brooch, of floral design, set with three brilliant cut diamonds to the centre surrounded by textured petals, London 1968, 4.5cms wide, 11.0g gross.
£200-400



51
An Edwardian aquamarine and diamond brooch, the circular facet cut aquamarine measuring 8.8 x 8.8 x 5.4mm, surrounded by an eight-cut diamond set bezel, 2.5cms wide, 7.8g gross.
£500-700



55
A diamond dress ring, the three baguette cut diamonds surrounded by twelve brilliant cut diamond bezel weighing a total of approximately 2.00carats, on 18ct white gold shank, ring size P, 7.0g gross.
£200-400



58
A tanzanite and diamond ring, the pear-cut tanzanite measuring 9.5 x 6.2 x 5.5mm, flanked by brilliant cut diamonds each approximately 0.10carats, the yellow metal shank stamped '18k', ring size O, 4.1g gross.
£200-400



59

A tanzanite and diamond ring, the oval facet cut tanzanite measuring 9.0 x 7.0 x 4.2mm, flanked by baguette cut diamonds to stepped shoulders, on 9ct yellow gold shank, ring size P, 2.6g gross.
£200-300



62

A paraiba tourmaline and diamond ring, by Iliana, the oval facet cut tourmaline measuring 9.9 x 7.9 x 5.0mm, claw set and flanked by brilliant cut diamonds to the shoulders, channel set on 18ct white gold shank, ring size O, 4.6g gross.
£300-500



65

A sapphire and diamond ring, by Iliana, the oval facet cut sapphire measuring 8.0 x 6.0 x 4.4mm, flanked by brilliant cut diamond shoulders, on 18ct white gold shank, ring size O, 3.4g gross.
£300-400



68

A pink topaz and diamond pendant, the pear-shaped facet cut topaz measuring 11.4 x 5.1 x 3.4mm, within a brilliant cut diamond shaped bezel and hanging from a diamond set bale, on 18ct yellow gold mount, on a fine 18ct yellow gold chain, pendant 3.0cms high, 4.2g gross.
£200-300



60

A tanzanite and diamond ring, set with three circular facet cut tanzanites each measuring 5.5 x 5.5 x 3.8mm, flanked by four baguette cut diamonds to each shoulder, on 14ct yellow gold shank, ring size P, 2.5g gross.
£150-250



63

A pink tourmaline and diamond ring, the oval tourmaline measuring 8.8 x 6.9 x 5.1mm, flanked by three brilliant cut diamonds to each shoulder, on 9ct yellow gold shank, ring size N, 2.3g gross.
£200-400



66

An 18ct yellow and white gold cuff bracelet, of alternating bi-coloured textured design, 2.1cms wide, 19.5cms long, 43.9g gross.
£800-1,200



69

A ruby and diamond ring, the rectangular step cut ruby surrounded by brilliant cut diamonds, on 9ct yellow gold shank, ring size P, 3.9g gross.
£150-250



61

A diamond half-hoop eternity ring, set with graduated baguette cut diamonds, in channel setting and white metal mount stamped '18k', ring size O, 3.6g gross.
£100-200



64

A peridot and diamond ring, the oval facet cut peridot measuring 9.8 x 7.8 x 5.6mm, flanked by baguette cut diamonds to three tiered shoulders, on silver-gilt shanks, ring size P, 3.2g gross.
£80-120



67

A star-ruby and diamond pendant, the oval star-ruby cabochon measuring 8.9 x 7.1 x 5.2mm, set below a bar of brilliant cut diamonds, in 9ct yellow gold mount, 3.5cms high, 2.6g gross.
£100-200



70

A star sapphire and diamond ring, the oval black star sapphire cabochon collect set flanked by brilliant cut diamonds to cross-over shoulders, on 9ct yellow gold shank, ring size Q, 3.7g gross.
£100-200



71
A Victorian pearl and ruby ring, by G.Bros, Chester 1885, the three half pearls parted by pairs of rubies, in 18ct yellow gold mount and shank, ring size R, 3.0g gross.
£100-200



72
A diamond and 9ct rose-gold pendant, the floral pattern pendant set with brilliant cut diamonds, 4.1cms high, 2.7g gross.
£100-200



73
A diamond dress ring, set with two rows of brilliant cut diamonds and a further diamond to the end of a decorative swirl, in 9ct white gold mount and shank, ring size P, 4.5g gross.



74
An opal and diamond pendant, set with twelve pear shaped opal cabochons around a diamond set scroll, in 9ct yellow gold mount, 2.8cms high, 3.6g gross.
£100-200



75
An opal and diamond brooch, of floral design with graduated pear shaped opal cabochons to petals interspersed by brilliant cut diamonds, the yellow metal mount stamped '15ct', 6cms wide, 5.5g gross.
£100-200



76
An Edwardian ruby and seed pearl pendant, the oval facet cut ruby surrounded by graduated seed pearls, the yellow metal mount stamped 'G&W 9ct', 3.8cms high, 2.6g gross.
£70-100



78
An Edwardian peridot and seed pearl pendant/brooch, the central oval facet cut peridot surrounded by seed pearls and above a pear-cut peridot drop, the yellow metal mount stamped '15ct', 4.0cms high, 5.1g gross.
£80-120



79
An onyx and diamond mourning brooch, the floral design set with old and rose cut diamonds, in an oval onyx plaque, the Etruscan design mount with beaded rim, 4.0 x 2.4cms.
£150-200



77
An Edwardian amethyst and seed pearl pendant/brooch, the central oval facet cut amethyst surrounded by seed pearls and above an oval facet cut amethyst drop, the yellow metal mount stamped '15ct', 4.0cms high, 4.8g gross.
£80-120



80
A Victorian diamond and sapphire bangle, the three graduated circular facet sapphires set with old-cut diamonds in a cluster and ribbon mounts, total diamond weight approximately 0.50 carats, on yellow metal knife-edge bar, 6.5cms wide, 8.6g gross.
£450-550



81
A 19th Century diamond dress ring, the central old cut diamond surrounded by rays of eight-cut diamonds, on yellow metal shank with engraved shoulders, stamped '18ct OB', ring size M, 6.1g gross.
£200-300



82
A Victorian-style cultured pearl 9ct yellow gold bangle, by G&TJ, London 1985, the graduated cultured pearls in open work mount and on floral scrolling back bar, 6.5cms wide, 17.4g gross.
£200-300



83
A pair of Georgian seed-pearl drop earrings, each pearl tied onto a mother-of-pearl backing, hanging from a yellow metal shepherd's crook fitting, 4.3cms high, 2.4cms wide, in original velvet lined brown leather box.
£100-200



84
A sapphire and diamond cluster ring, the circular facet cut sapphire measuring 8.3 x 4.0mm, surrounded by six old-cut diamonds, total diamond weight approximately 1.20 carats, in white metal illusion setting, the yellow metal shank stamped '18ct', ring size L, 8.3g gross.
£300-500



85
A single stone diamond ring, the princess-cut diamond measuring 5.80 x 5.71 x 3.96mm weighing approximately 1.09carats, corner set in 14ct white gold shank, ring size K 1/2, 4.23g gross; with AnchorCert report no.20057003 stating clarity VVS and colour G.
£1,000-1,500



87
An emerald and diamond ring, the rectangular facet cut emerald measuring 5.8 x 4.8 x 3.4mm, flanked by six marquise cut diamonds weighing approximately 0.50carat, in white metal mount and shank, ring size M, 4.1g gross.
£800-1,200



86
Twenty stone princess cut diamond ring, the graduated diamonds weighing a total of approximately 1.00carats, on white metal shank, ring size K, 4.5g gross.
£500-800



88
A sapphire and diamond cluster ring, the cornflower blue circular facet-cut sapphire 6.0 x 6.4 x 4.3mm, surrounded by ten brilliant cut diamonds weighing a total of approximately 1.00carats, in white gold mount, ring size M, 3.7g gross.
£600-800



89
A Victorian silver cloak pin, by Henry Ellis & Son, Exeter, 1847, in a quatrefoil design, pierced and engraved, with a pendant drop, stamped 'Reg Oct 21 1847', 12cms high, 18.0g gross.
£250-350



90
An early 20th Century gemstone necklace, set with amethyst, peridot, garnet, moonstone, opal, banded agate, carved shell cameo, agate, coral, pearl and other stones, the clasp stamped '9c', 150cms long, 35.0g gross.
£400-600



91
A single stone diamond ring, the old cut diamond measuring 6.6 x 6.8 x 5.2mm, weighing approximately 1.59carats, collet set with open work shoulders, 9ct yellow gold shank, ring size Q, 4.7g gross.
£1,000-2,000



93
A ruby and diamond ring, the oval facet-cut ruby measuring 6.7 x 4.9mm (depth unobtainable), surrounded by twelve graduated brilliant cut diamonds, flanked by ten brilliant cut diamonds to the shoulders, on 18ct white gold shank, ring size O, 4.5g gross.
£400-500



96
A diamond ring, the cross-over mount set with seventeen brilliant cut diamonds, in 18ct yellow gold shank, ring size M, 3.6g gross.
£200-300



94
An emerald and diamond ring, the oval facet cut emerald measuring 7.7 x 5.9 x 3.4mm, flanked by six brilliant cut diamonds to shoulders weighing a total of approximately 0.25carats, on 18ct yellow gold shank, ring size N, 3.5g gross.
£300-400



97
A 9ct yellow gold dress ring, by L.R, London 1961, of feather design, 5.8g, ring size L.
£50-100



92
A diamond tennis bracelet, set with forty-three brilliant cut diamonds weighing a total of approximately 4.50 carats, in 18ct white gold mount, 18.5cms long, 14.0g gross.
£2,000-3,000



95
A seven stone diamond ring, the brilliant cut diamonds weighing approximately 0.50carats, on 18ct yellow gold shank, ring size K, 3.2g gross.
£300-400



98
Cartier, Paris: a pair of enamel, diamond and 18ct yellow gold earrings, each set with eleven brilliant cut diamonds surrounded by green enamel leaves, in textured gold mount, with maker's mark and dated 1968, a plaque engraved 'Enamelled for Cartier', 3.5cms high, 27.3g gross, cased.
£1,500-2,500



99
An 18ct yellow gold and diamond necklace, of curb links, the lower strand joined by diamond set white gold links, 38cms long, 79.0g gross.
£1,800-2,200



100
Two 18ct gold and diamond necklaces, each with 18ct yellow and white gold curb links, some set with six brilliant cut diamonds, with the ability to link together to have a single long necklace, 45cms and 40.5cms long, 150.8g gross.
£3,000-5,000



101
A yellow metal necklace, of eight textured cubes, joined by oval cable links, 94cms long, 119.9g gross.
£2,000-3,000



102
Kutchinsky: a pair of 18ct yellow gold earrings, signed and dated London 1972, of plain square block form, 30.0g gross, 2cms wide, cased.
£500-700



103
A bi-coloured metal bracket, the yellow ribbon design square and circular panels with white metal twisted borders, 20.5cms long, 83.4g.
£1,500-2,500



104
A yellow metal snake pattern necklace and bracelet, the necklace with two entwined snakes hanging from a snake link chain mounted by eight further snakes, the clasp stamped 'K18', 44cms long; and a matching snake link bracelet, mounted by four snakes, 20.5cms long, all snakes set with ruby eyes, 159.1g gross.
£3,000-5,000



105
A cultured pearl necklace with diamond clasp, the double row of 42 and 43 cultured pearl 6.8mm diameter, strung knotted to a diamond clasp with central French-cut diamond measuring 6.0 x 6.0 x 4.6mm weighing approximately 1.30carats, surrounded by old-cut diamonds in millegrain mount in white metal setting, the tongue clasp stamped '18ct', 33.5cms long.
£2,000-4,000



106

A citrine, seed pearl and gemstone heart and crown pattern pendant, the facet cut deep orange heart mounted by a yellow metal crown set with red and green gemstones and seed pearls, 5.8cms high, in original fitted case retailed by Hamilton & Inches, Edinburgh.

£300-500



107

A four strand cultured pearl necklace, the pearls each approximately 4.0mm diameter, strung knotted to a white metal clasp stamped '14K', 32cms long.

£40-80



108

A diamond and yellow metal choker necklace, the three old-cut diamonds weighing a total of approximately 1.75carats, in yellow metal collet setting and wire mount, 11.5cms wide, 18.8g gross.

£1,000-2,000



109

Asprey & Co Ltd: a coral, diamond and 18ct white gold necklace and earrings, the necklace half set with fluted coral and pave set with brilliant cut diamonds to the other half, hanging from a diamond set bale, the stiff collar with central hinge, with maker's mark and dated London 1976, pendant 3.2cms high, collar 12cms wide; with matching earrings, post and clip fitting, 1.7cms high, 50.0g gross, in original case.

£2,000-4,000



110

Diamond, baroque pearl and white metal spider brooch, the two pearls set to body with four old-cut diamonds, in a white metal mount, unmarked, 5cms long, 13.6g gross.

£500-700



111

Diamond, baroque pearl and yellow gold drop earrings, each set with flattened circular pearls below three brilliant cut diamonds, in yellow metal mounts, post and butterfly fittings, 2.2cms high.

£150-250



112

A sapphire and diamond cluster ring, the circular facet cut sapphire measuring 9.6 x 9.5 x 5.5m, surrounded by ten brilliant cut diamonds weighing a total of approximately 2.00 carats, in crown mount, the yellow metal shank stamped '18ct' and engraved with initials and date '1962', 7.4g gross, ring size N.

£600-800



113

A single stone diamond ring, the brilliant cut diamond measuring 5.05mm diameter (depth unobtainable), estimate to weigh 0.50carat, in claw mount and platinum shank, ring size K, 4.0g gross.
£300-500



114

An emerald and diamond ring, the rectangular emerald measuring 7.7 x 7.1 x 4.3mm, flanked by two panels of four princess cut diamonds and fourteen graduated brilliant cut diamonds, total diamond weight approximately 2.00 carats, on 18ct yellow gold shank, ring size M, 9.0g gross.
£1,500-2,500



115

A Victorian yellow metal and seed pearl mourning brooch, the central oval cabochon surrounded by seed pearl bezel and ropework border, vacant plaque to reverse, 4.3cms wide, 16.2g gross.
£150-200



116

A five stone diamond ring, the graduated brilliant cut diamonds weighing a total of approximately 0.45carats, in scrolling mount, the yellow metal shank stamped '18ct', ring size O, 3.0g gross.
£100-200



117

A single stone diamond ring, the brilliant cut diamond weighing approximately 0.50 carats, claw set in white metal mount and shank, unmarked, ring size O, 2.7g gross.
£200-300



118

A blue topaz and diamond ring, the oval fancy-facet cut topaz measuring 18.1 x 13.1 x 8.9mm, surrounded by a bezel of brilliant cut diamonds and diamond shoulders, in scrolling mount, on 9ct yellow gold shank, ring size M, 9.8g gross.
£300-500



119

A pink sapphire and diamond ring, the oval facet cut sapphire measuring 8.4 x 6.2 x 4.5mm, surrounded by sixteen brilliant cut diamonds, the white metal shank stamped '14k', ring size K 1/2, 6.2g gross.
£400-600



120

An opal and diamond cluster ring, the oval opal measuring 13.0 x 7.7 x 3.3mm, in collet setting, surrounded by fourteen brilliant cut diamonds weighing a total of approximately 1.50carats, on 18ct yellow gold shank, ring size K, 7.9g gross.
£300-500



121

A sapphire and diamond ring, the oval facet cut sapphire surrounded by brilliant cut diamonds in a quatrefoil cluster, on 18ct yellow gold shank, ring size L, 2.6g gross.
£100-150



122

An emerald and white stone ring, the oval facet cut emerald measuring 7.0 x 5.0 x 3.9mm, surrounded by white stones, on 9ct yellow gold shank, ring size L, 1.9g gross.
£100-150



123

A ruby cabochon ring, the oval ruby cabochon measuring 15.3 x 11.1mm, in collect setting, on 18ct yellow gold shank, ring size Y, 9.0g gross.
£300-500



124

A pair of 18ct yellow gold Egyptian cufflinks, the main plaques circular with figural design, hieroglyphics to back and smaller plaques, 2cms wide, 18.4g gross.
£400-600



125
A pair of 9ct yellow gold cufflinks, DS&S, London 1973, of textured design with hinged stay, 2.5cms wide, 11.7g gross.
£100-200



126
A pair of yellow metal cufflinks, of tri-form design with Hindu symbol, stamped '22K', 2.6cms wide, 23.3g gross.
£300-500



127
A pair of yellow metal cufflinks, of textured design with hinged stay, 4cms wide, 38.1g gross.
£400-700



128
A fine pair sapphire and diamond cufflinks, each link with double sapphire cabochons, the larger with sapphires measuring 15.4 x 13.5mm (depth unobtainable), set with a diamond collar, the smaller with sapphire cabochon 13.8 x 11.5mm, in plain mounts, total diamond weight approximately 1.60 carats, total sapphire weight 58.60 carats, joined by cable links, unmarked, 21.8g gross.
£3,000-5,000



129
A five stone diamond ring, the graduated brilliant cut diamonds weighing a total of approximately 0.15 carats, in 18ct yellow and white gold mount and shank, ring size O, 6.4g gross.
£100-200

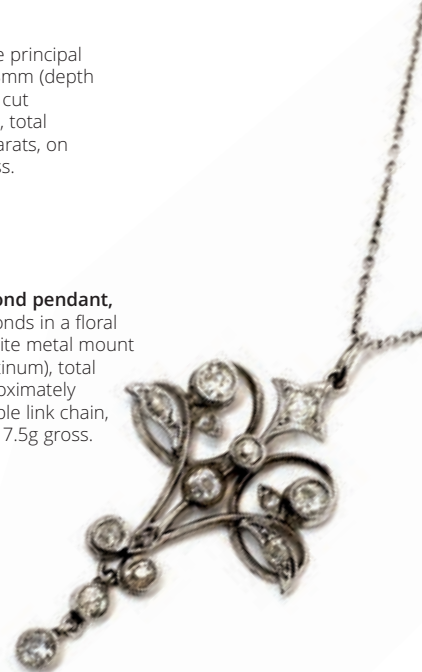


130
A pear-cut diamond cluster ring, the principal pear cut diamond measuring 5.6 x 3.8mm (depth unobtainable), surrounded by brilliant cut diamonds and diamond set shoulders, total diamond weight approximately 0.70 carats, on platinum shank, ring size J/K, 4.0g gross.
£300-500



132
A late Victorian ruby, diamond and pearl brooch, off wavy double bar set with square step-cut rubies and rose cut diamonds, centred by a cultured pearl, in yellow metal mount, 3.7cms wide, 4.3g gross.
£200-300

131
An Edwardian diamond pendant, set with old-cut diamonds in a floral scrolling design, in white metal mount (marked but likely platinum), total diamond weight approximately 1.10carats, on fine cable link chain, pendant 4.7cms high, 7.5g gross.
£300-500





133

A George III mourning ring, the central plaited hair plaque surrounded by facet cut jet, the yellow metal shank in white and black enamel inscribed 'Sarah Taylor Ob 25 Jan 1810 AE 69', ring size N, 6.6g gross.

£300-500



134

Murrel Bennett & Co: a turquoise and pearl brooch, the yellow metal Art Nouveau whiplash design with central oval turquoise cabochon measuring 6.3 x 4.4mm, with seed pearls above and below and a cultured pearl drop, stamped 'MB&Co 15ct', 3.1cms wide, 5.0g gross.

£200-300



135

Murrel Bennett & Co: an opal and yellow metal brooch, the Art Nouveau whiplash design with central oval opal cabochon measuring 7.2 x 5.4mm, above an oval opal cabochon drop, stamped 'MBCo' monogram and '15ct', 5.2cms wide, 3.1g gross.

£200-300



136

Murrel Bennett & Co: a polychrome enamel silver brooch, of Liberty style Arts and Crafts design, stamped 'MBCo' monogram and 'Sterling', 4.5cms wide, 6.0g gross.

£150-250



137

An Arts and Crafts silver and blue enamel pendant, by James Fenton, Birmingham 1908, of whiplash design above drop, hanging from cable link chain, 5.0cms high, 4.6g gross.

£100-200



138

A Scottish Arts and Crafts baroque and enamelled silver pendant, the spade-shaped pendant with blue/green enamel oval plaque, holding a baroque pearl drop and hanging from cable link chain and mabe pearl bale, stamped 'Sterling' to reverse, the pendant 6.2cms high, chain 45cms long, 10.1g gross.

£100-200



139

An Edwardian seed pearl and sapphire brooch, of Art Nouveau form, set with pear-shaped facet cut sapphire measuring 6.8 x 4.4mm, surrounded by graduated seed pearls, 3.1cms high, 4.3g gross.

£70-100



140

An Arts and Crafts silver and blue enamel pendant, no maker's marks, Birmingham 1908, 4.6cms high, 5.2g gross.

£70-100



141

Faberge: an 18ct white gold limited edition egg pendant, in blue enamel set with two brilliant cut diamonds in swirling design, 425/500, hanging from a hinged bale, 3.1cms high, 10.4g gross, with guarantee certificate ref F1793 sold by Reid & Sons, in wooden box and card slip.

£700-1,000

142

No Lot

Plated Silver at 12.15pm

143

A 19th Century silver plated communion set, by Elkington & Co, comprising two ewers, six chalices and six patens, each piece engraved with 'St. Pauls Presbyterian Church, South Shields, 1899', in fitted oak canteen with matching inscription to cartouche, ewers 32cms high, canteen 54cms wide.
£200-400



Antique Silver



144

A George IV silver coffee pot, by Robert Peppin, London 1825, the cover with flower pattern finial, of baluster half fluted form, acanthus capped handle, 21cms high, 22.5oz gross.
£300-400



145

An Edwardian silver table centrepiece, by Atkin Brothers, Sheffield 1905, with central shaped circular detachable bowl, above shaped support and arms with two smaller bowl and two glass vase liners (unoriginal), on spreading base and pierced feet, 40cms high, 58.4oz gross (excluding glass vases).
£500-800



146

An Edwardian silver sauce boat, by The Alexander Clark Manufacturing Co, London 1907, with shaped rim, acanthus capped scrolling handle, engraved initial 'R', and shell pattern pad feet, 22cms long, 9.4oz.
£100-200



147

A George III silver soup ladle, by John Langlands II, Newcastle 1796, old English pattern with engraved initial 'J', 37cms long, 4.1oz.
£80-120



148

A George V silver christening cup, by *Nathan & Hayes*, Chester 1912, half fluted with acanthus capped scrolling handle, 10.5cms high, 5.1oz.

£80-120



149

A Victorian silver suite of spoons and forks, mostly by *Chawner & Co*, London 1870, comprising ten dessert spoons, ten table forks, eleven dessert forks, eight tablespoons, and eight teaspoons, each with engraved crest and garter, 41oz gross

£400-600



150

A William IV silver dessert knives and forks, by *Aaron Hadfield*, Sheffield 1836, in Queens pattern with silver blades and tines, in mahogany canteen, 32cms wide.

£100-200



151

A Victorian silver teapot, by *James Barclay Hennell*, London 1878, the acorn finial on plain cover, the body with wreath and half fluted design, retailed by Howell, James & Co, 5,7& 9 Regent St, London, 17cms high, 22.4oz gross.

£250-350





152

A pair of George III silver table salts, by *TH*, London 1807, of shaped oval form, the rims with shell decoration, raised on dolphin pattern feet, 12cms wide, 13.8oz gross.
£300-500



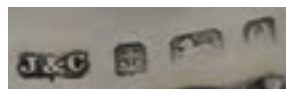
153

An Edwardian silver mounted clear glass claret jug, by *Walker & Hall*, Sheffield 1905, in the manner of Christopher Dresser, the cover engraved 'CR 22 July 1906', above angled spout and turned ebony handle, 24cms high.
£300-500



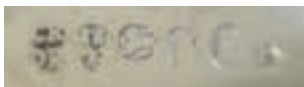
154

An Edwardian four piece silver tea service, by *Jones & Crompton*, Birmingham 1904, comprising teapot, hot water pot, sugar bowl and milk jug, each half decorated with embossed leaf scrolls, water pot 22cms high, 28.6oz gross.
£300-500



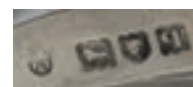
155

A George IV silver two handled sugar bowl, by *Reid & Son (Christian Ker Reid & David Reid)*, Newcastle 1824, of oval form with gadrooned rim flanked by reeded handles with acanthus leaf caps, raised on ball feet, 23cms wide, 9.1oz.
£150-250



156

A pair of George V silver mustard pots, by *Charles Stuart Harris*, London 1911, the dome covers with shell pattern thumb pieces above pierced design, fitted clear glass liners, engraved elephant pattern crests, with original spoons, 10.5cms long.
£100-200





157

An Edwardian silver tazza, by *William Aitken*, Birmingham 1905, the circular bowl engraved 'Felda First Prize 1940', with whiplash handles and spreading foot, 34cms wide, 18.7oz.

£150-200

Modern Silver



158

A set of six George V silver and enamel teaspoons, by *Liberty & Co*, Birmingham 1935, with Art Deco stepped design blue/green enamelled finial, 10cms long, 1.7oz gross, in Liberty case.

£50-100



159

A George V silver servers, by *Thomas Bradbury & Sons*, Sheffield 1934, with stepped finials and hammered bowls, spoon 23cms long, 4.6oz gross, in fitted case.

£100-150



160

A George V silver and purple enamel powder compact, by *Charles S Green & Co Ltd*, Birmingham 1929, the engine turned guilloche enamel case with mirror to inside lid and gilt interior, 6cms diameter.

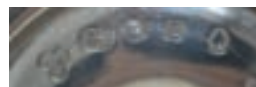
£50-100





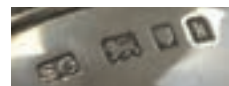
161

A pair of Elizabeth II silver three branch candelabra, by *Wakely & Wheeler*, London 1977, with urn shaped sconces above circular drip pans and scrolling arms, on baluster stem, 26cms high, 63.7oz gross.
£600-1,000



162

A George V silver three piece tea service, by *Garrard & Co Ltd*, London 1924, of plain form with fluted waist and handles, the teapot 23cms long, 33.5oz gross.
£350-500



163

A George V silver salver, by *Barker Brothers Silver Ltd*, Birmingham 1928, of shaped circular form raised on hoof feet, 31cms diameter, 27.4oz.
£300-500



164

A George V tortoiseshell box, London 1927, with silver mounted God of Tyne above plaque with engraving 'Miss E.M.Wood, Launch S.S. Acosta, 7th December 1925, Palmers Hebburn', 21 x 13cms.
£80-120



165

No Lot



Foreign Silver



166

A mid-19th Century 830 standard silver coffee pot and milk jug, by L. Larson, Sweden 1849, each of baluster form with engraved leaf scroll design and acanthus capped handles, the coffee pot with flower pattern finial to cover, 29cms high, 35.9oz gross.

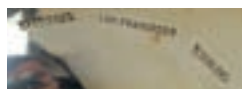
£300-500



167

A set of four Limoges porcelain bowls in sterling silver two-handled stands, by Shreve & Company, San Francisco, the bowls with gilt rims, the stands with floral rims, 15cms wide.

£100-200



168

An American sterling standard silver wine taster, by William Lawrence deMatteo, (1923-1988), of circular form with shaped handle, 12cms long, 2.9oz.

£40-60



169

A Ukrainian silver Kovch, by an unidentified maker of Zhytomyr, Ukraine, dated 1873, 84 standard city mark of St. Petersburg, sponsors maro 'A.L.', the shaped bowl with Cyrillic inscription, scrolling design to handle, 12cms long.

£200-300



170

A set of five 19th Century Russian silver salts, 84 standard, with cyrillic maker's mark Bl, of basket for with shovel pattern spoons, each 4.8cms wide, 3.6oz gross.

£200-500





171

A mid-19th Century French silver coffee pot, by Christofle, with export mark by handle, the dome cover with floral finial above baluster body with engine turned and leaf scroll design, the twisted handle with leaf design and duck head pattern spout, the beaded base stamped 'Christofle' beside bee pattern makers mark, 23cms high, 29.9oz gross.

£500-800



172

An Indian white metal salver, by F.W. Margrett, Bangkok 1929, of quatrefoil form with engraved dancer to the table and embossed leaf scrolls and deities to rim, 26cms wide, 16.4oz.

£100-200



173

A set of four silver-gilt and enamel cups, by Anton Michelsen, Copenhagen, Denmark, c.1905, replicas of Queen Margrethe's cup, in blue, white or green, 8.5cms high, 25.1oz gross.

£500-800



174

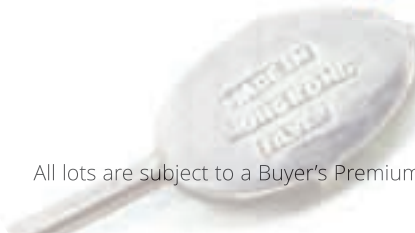
A pair of Italian 925 standard silver salt and pepper pots, by Elsa Peretti for Tiffany & Co, of shaped design, 5cms high, 2.5oz gross, with pouch and box.

£80-120

175

A Chinese silver and jade tea strainer, the silver bowl with phoenix and leaf design, stamped 'Silver China #8', with carved jade handle, 18cms long, 12.4oz. gross; and **a set of six Chinese silver teaspoons**, each with bamboo design handles with carved jade finials, stamped 'Silver Made In Hong Kong', each 11.5cms long, 1.7oz gross.

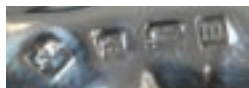
£100-200



Objects of Vertu



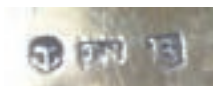
176
A George V novelty Toby jug, by Martin, Hall & Co, Birmingham 1911, stamped Rd579667, 8cms high, 1.7oz.
£100-200



177
A Victorian novelty Punch pattern card tray, by Edward Durban & Co, Birmingham 1895, decorated with Punch, Toby and nursery scenes, 10.5 x 8cms, 0.96oz.
£50-100



178
A George IV silver snuff box, by Thomas Streetin, Birmingham 1825, of rectangular form engine turned and floral moulded edge, engraved cartouche 'Mich White', 7 x 4.5cms, 2.4oz.
£100-200



179
An early 20th Century yellow metal whistle, of acorn design with floral decoration, on curb link watch chain, unmarked, whistle 4cms long, 39cms long overall, 19.5g gross.
£200-300



180
A George III silver vinaigrette, by John Lawrence & Co, Birmingham 1817, of bag form with gilt interior and dot pierced interior, 2.3cms wide.
£100-150



181
Tiffany & Co: a yellow metal whistle, stamped '14K', 3cms long, 9.2g.
£150-250



182

An early 20th Century French erotic snuff box, decorated in enamel with a courting man at the window of a maiden to outer and erotic scene to interior, on brass basket pattern case, 5cms wide.

£100-150



183

A Victorian silver novelty vesta case in the form of a horse's lower leg, by David & Lionel Spiers, Birmingham 1883, the hoof ornately engraved and inscribed 'First Favorite', 5cms high.

£650-750



184

An Edwardian silver frog pattern pin cushion, by Cornelius Desormeaux Saunders & James Francis Hollings (Frank) Shepherd, Birmingham 1907, 6cms long.

£250-350



185

A 19th Century Dutch 14ct yellow gold watch key, of rectangular form with engraved floral scrolling design, with hinged leaf scrolling design above and below, 7cms long, 16.0g gross.

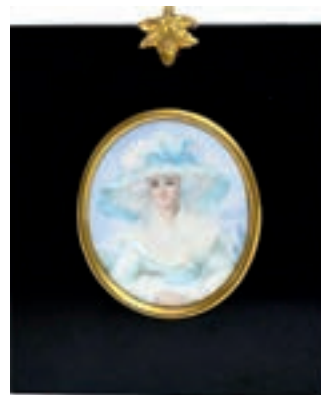
£350-450



186

A silver mounted porcelain egg pattern scent bottle, by Cornelius Desormeaux Saunders & James Francis Hollings (Frank) Shepherd, Birmingham 1888, the egg in the form of a Larger Great Black Backed Gull, number inscribed to base 'RdNo20772', 8cms long.

£250-350



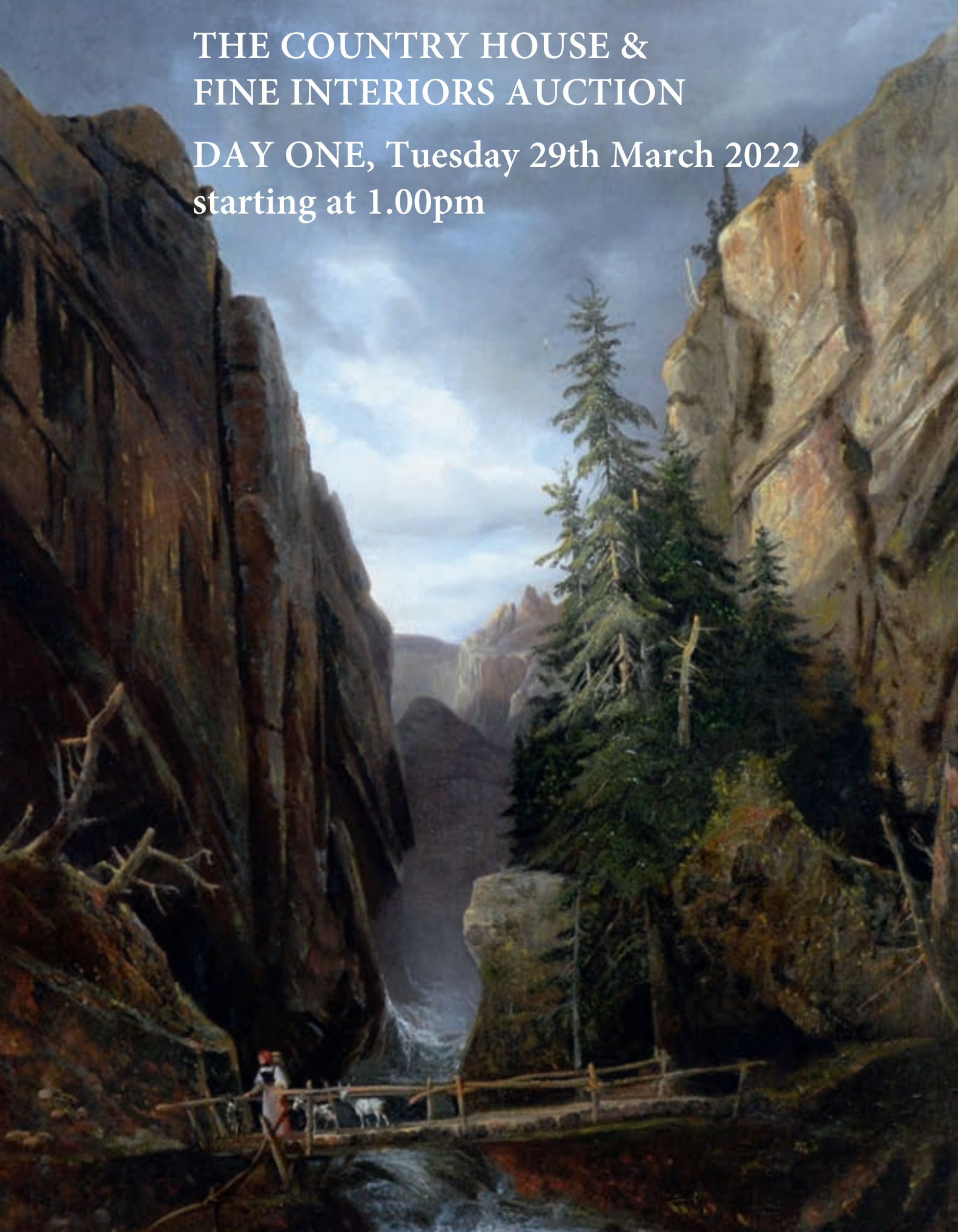
187

19th Century British School "Mrs Lawzun" [sic], and a portrait of a lady in lace bonnet, watercolour on ivory, 6 x 4.4cms, and 8 x 6.5cms, framed. (2)

£200-300

THE COUNTRY HOUSE & FINE INTERIORS AUCTION

DAY ONE, Tuesday 29th March 2022
starting at 1.00pm



Prints

Lots marked **δ** refer to Droit de Suite Royalty Charges - see Conditions of Sale on page 203.
Framed unless otherwise stated



189 (a pair)

189 δ

Charles "Snaffles" Johnson Payne

(1884-1967)

"The Biggest Walls in the Country was in it" and "Great Banks there was below in the Fields"

each signed in pencil to the margins, coloured photolithographs, published by the author 1933-1934 with Snaffles-bit blindstamp,

51 x 68.5cms and 50 x 69cms, in black frames. (a pair)

£400-600

190 δ

Charles "Snaffles" Johnson Payne

(1884-1967)

"The Finest View in Europe" and "The Worst View in Europe"

each signed in pencil to the margins, hand-coloured photolithographs, published by the author c.1922, with Snaffles-bit blindstamp,

each 41 x 66.5cms. (a pair)

£400-600

191 δ

Charles "Snaffles" Johnson Payne

(1884-1967)

"Merry England"

signed in pencil to the margins, colour photolithograph, published by the author c.1927, with Snaffles-bit blindstamp,

44 x 41cms, in black lacquered frame.

£80-120



190 (a pair)



191



192

192
Marius Alexander Bauer
 (Dutch, 1867-1932)
 "And the Earth Trembled"
 signed, circa 1892,
 etching,
 18 x 27cms, framed.
£100-200

193
 No Lot



194
Thomas Bewick
 (1753-1828)
 A collection of tail-pieces or vignettes, including: "The Angler at the River Pool", for 'British Birds', II, 1804, and 1818 dated thumbprint receipt, wood engravings, ranging from 22 x 22cms, to 9.5 x 11.5cms, framed.
£100-200

194

All lots are subject to a Buyer's Premium of 22% plus VAT (26.4% in total)

Watercolours & Drawings

Lots marked **δ** refer to Droit de Suite Royalty Charges - see Conditions of Sale on page 203.
Framed unless otherwise stated

195

Walter Holmes

(b.1936)

"Frosty Morning", Bolam Lake,

signed,

pastel

with original purchase receipt signed by the artist,
34 x 54cms, in a silvered frame.

£350-550



195



196

196

Cyril Arthur Farey FRIBA and Graham Dawbarn CBE

(1888-1954)

The original builder's draught of the Sydney Harbour Bridge for Messers Dorman Long,
signed and dated 1924, Royal Academy of Arts British Architecture 1937 Exhibition label verso,
watercolour,
77 x 172cms, framed.

Notes:

Royal Academy of Arts British Architecture 1937 Exhibition label reads Arcitets - Sir John Burnet Tait & Lorne, Title -
Sydney Harbour Bridge coloured perspective, Draughtsman - Mr Cyril Farey, Section - Bridges.

Label for Return to Messers Dorman Long, Terminal House, Grosvenor Gardens.

Framer's labels for A.R. Skillen & Co, London and James Boublat & Sons, Mortimer Street.

£2,000-4,000



197

197
19th Century Indian School
 Scenes of courtly life,
 gouache on paper,
 35 x 21cms, unframed. (5)
£200-300

198
Attributed to Vittorio Amadeo Preziosi
 (1816-1882)
 Arabian Journeyman,
 watercolour,
 26 x 18cms, framed.
£80-120



198

199
Charles James Keats
 (c.1900)
 "Tssoudun" and "Bethune",
 signed, entitled to the mount,
 watercolour,
 49 x 31cms, framed. (a pair)
£200-300



199 (a pair)



200

200

19th Century Indian School

"His Highness the Maharana Fateh Sing Bahadur
G.C.S.I. of Oodeypore [sic] in His State Dress 1891",
gilt-enriched gouache,
48 x 36cms, framed.

£100-200



201

201

Edward Angelo Goodall

(1819-1908)

"An Arabian Marketplace",

signed,

watercolour,

35 x 52cms, framed.

£200-300



202

202

Thomas Rowlandson

(1756-1827)

The Boxing Match,

signed,

watercolour,

16 x 24cms, framed.

£100-200

203
Frederic de Haenen
 (1853-1929)
 "St Petersburg, Winter"
 signed,
 graphite, watercolour, and gouache,
 24 x 19cms, framed.
£150-250



203



204

204
H* L*
 (19th Century)
 British barracks, with soldiers at rest,
 indistinctly signed,
 watercolour,
 20.5 x 29cms, framed.
£100-200

205
George Goodwin Kilburne
 (1839-1924)
 "An Interesting Letter",
 signed,
 watercolour,
 22 x 20cms, framed.

The model is the artist's second wife, whom he met at Alma-Tadema's studio in Hampstead. She was Alma-Tadema's favourite model, and appears in many of his pictures. The grandson of George Kilburne still owns the chair also depicted in the painting, and the work comes with a letter asserting such from the gallery.
£200-400



205

206
Attributed to Charles Cattermole
 (1832-1900)
 Preparatory study of a gentleman in 16th Century dress
 conversing with a young child at his knee,
 unsigned,
 watercolour wash,
 10.5 x 7.5cms, framed.
£80-120



206



207

207
John Holding
 (19th Century)
 "The Neighbours Dog",
 signed lower right and inscribed verso,
 watercolour,
 20.5 x 30.5cms, framed.
£80-120



208

208
Lionel J. Cowen RBA
 (fl. 1869-1888)
 The Luthier and His Friend,
 signed,
 watercolour heightened with bodycolour,
 47.5 x 35.5cms, framed.
£200-400

209

Norman Stansfield Cornish

(1919-2014)

Two men at a bar counter,
signed,
flowmaster pen on buff-tinted paper
heightened with white chalk,
21 x 26.5cms, framed.

Provenance: The collection of actress
Sylvia Syms, OBE.

*Sylvia Syms became a keen admirer of
Norman's work after seeing them at Sid
Chaplin's house whilst she was appearing in
a production at The People's Theatre in
Newcastle. Chaplin introduced Syms to
Norman, and she visited him and his wife
Sarah at their home on several occasions.
Norman spoke very fondly of Sylvia, and
they kept in touch for many years.*

£2,000-3,000



209



209A

Norman Stansfield Cornish

(1919-2014)

Man seated drinking at a table,
signed,
flowmaster pen on buff-tinted paper
heightened with white chalk,
19.5 x 21.5cms, framed.

Provenance: The collection of actress
Sylvia Syms, OBE.

*Sylvia Syms became a keen admirer of
Norman's work after seeing them at Sid
Chaplin's house whilst she was appearing in
a production at The People's Theatre in
Newcastle. Chaplin introduced Syms to
Norman, and she visited him and his wife
Sarah at their home on several occasions.
Norman spoke very fondly of Sylvia, and
they kept in touch for many years.*

£2,000-3,000

209A

210
Norman Stansfield Cornish
 (1919-2014)
 "Sketches in Darlington",
 watercolour and pen and ink,
 22 x 28cms, framed.
£2,000-3,000



210



210A
Norman Stansfield Cornish
 (1919-2014)
 Early morning going to the pit,
 watercolour,
 19 x 25cms, framed.
£2,000-3,000



210A



211

211
Norman Stansfield Cornish
(1919-2014)
"Pit Head",
signed, entitled verso,
watercolour,
17 x 12cms, framed.
Provenance: Stone Gallery
University of Northumbria Gallery
£2,000-3,000



212

212
Frank Watson Wood Snr
 (Scottish, 1862-1953)
 "A Grey Day" / "St. Vincent and Entrance to Portsmouth Harbour",
 signed and entitled, with additional title verso,
 watercolour,
 20 x 32cms, framed.
£200-400



213

213
Frank Watson Wood Snr
 (Scottish, 1862-1953)
 Tranquil Harbour View,
 signed and dated 1888,
 watercolour,
 20 x 33cms, framed.
£200-300



214

214
Paul Kitchingman
 (b. 1947-)
 Rockpooling,
 signed,
 watercolour,
 23 x 33cms, framed.
£100-180



215

215
John Falconar Slater
 (1857-1937)
 The Breaking of Waves,
 gouache,
 37 x 51cms, framed.
£200-400



216
John Chambers
 (1852-1928)
 "Greenwich Reach",
 signed,
 watercolour,
 64 x 123cms, framed.
£200-400

216



217

217
Bernard Benedict Hemy
 (1844-1910)
 Sail Boat and Steam Tug,
 signed,
 oil on canvas,
 49 x 74cms, framed.
£300-500



218

218
Arthur Burgess
 (1879-1957)
 "The Fleet in the Thames - Peace Celebrations",
 signed and dated 19.7.19,
 watercolour,
 31 x 46cms, framed.
£300-400



219

219
Frank Henry Mason
 (1875-1965)
 Seascape with rowboat to the fore,
 signed,
 watercolour,
 25 x 35cms, framed.
£200-300



220

220
Thomas Swift Hutton
 (Scottish, 1865-1935),
 North Shields Harbour,
 signed,
 watercolour,
 49.5 x 75cms, framed.
£150-250



221

221
John Wilson Carmichael
 (1799-1868)
 A Royal Naval frigate under repair.
 signed,
 watercolour and graphite,
 19 x 27cms, framed.
£100-200



222

222
Walter Holmes
 (b.1936)
 Tall Ships, Newcastle Quayside,
 signed,
 pastel on paper,
 42.5 x 65cms, framed.
£200-300



223

223
Robert Jobling
 (1841-1923)
 Welcome Home,
 signed,
 watercolour,
 23 x 17.5cms, framed.
£200-300



224



225



226

226
Attributed to James Holland
 (1799-1870)
 "The Rialto Bridge, Venice",
 old manuscript label verso bearing artist's name and title
 of work,
 watercolour,
 25.5 x 36.5cms, framed.
£300-500

227
Frank Watson Wood snr.
 (1862-1953)
 "Martins Bridge West of Hawick",
 signed and dated 1899,
 watercolour,
 24 x 34cms, framed.
£150-250



227



228 (a pair)

228
18th Century Continental School
 Rural idyls on the shore of a lake,
 watercolour,
 16.5 x 22cms, framed. (a pair)
£100-200



229

229
Henry Andrew Harper
 (1835-1900)
 In the shadows below Mount Hermon,
 signed and dated 1887,
 watercolour heightened with bodycolour,
 51 x 74cms, framed under glass.
£400-600



230

230
Osborne Rasmussen ABWS
 (19th Century)
 "Blairmore and Holy Loch, Argyleshire",
 watercolour,
 55 x 77cms, framed.
£150-250



231



232



233

231
Warren Williams ARCA
 (1863-1918)
 Quiescent landscape view with sailboat by a jetty,
 signed,
 watercolour,
 33 x 51.5cms, framed.
£200-400

232
Warren Williams ARCA
 (1863-1918)
 Welsh River Scene at Summertime,
 signed,
 watercolour,
 26 x 35.5cms, framed
£200-400

233
Thomas Swift Hutton
 (1865-1935)
 "Early Winter - Entrance to Loch Lomond",
 signed,
 watercolour,
 26 x 42cms, framed.
£100-200

234
Alfred Jack Keene
 (1864-1930)
 "The Way Through the Hills Near Bath",
 signed lower right, and inscribed verso,
 watercolour,
 39 x 54cms, framed.
£80-120



234



235

235
Francis da Ponte Player
 (fl. 1880-1882)
 "Jungfrau, Bernese. Oberland",
 signed and dated 1880,
 watercolour,
 30 x 45cms, framed.
£80-120



236

236
Samuel A Rayner
 (1806-1879)
 Fruit Sellers by the Harbour,
 signed with a monogram and dated 1866,
 watercolour,
 26.5 x 40cms, framed.
£200-300



237

237
George Shalders
 (1825-1873)
 English Countryside Idyll,
 signed,
 watercolour,
 20 x 32cms, framed.
£100-150



238

238
Thomas Miles Richardson Jnr RWS
 (1813-1890)
 Continental Lake View with Snow Capped Mountains,
 signed with initials and dated 1853,
 14 x 26cms, framed.
£100-180



239

239
John Sherrin
 (1819-1896)
 Still Life with Apples, Snail Shell, and Moss,
 signed,
 watercolour,
 14.5 x 18.5cms, framed.
£200-400



241

240
William Henry Hunt
 (1790-1864)
 Still Life with Apples, Grapes, and Holly Berries,
 signed,
 watercolour,
 18 x 28cms, framed.
£150-250

241
William Henry Hunt
 (1790-1864)
 Still Life with a Basket of Spring Blooms,
 signed,
 watercolour,
 30 x 21cms, framed.
£200-300

242
Harry Stinton
 (1883-1968)
 A Lone Pheasant Surveying His Kingdom,
 signed,
 watercolour,
 10.5 x 14.5cms, framed.
Harry Stinton, part of the Royal Worcester Stinton Dynasty, was the son of John Stinton junior, and the nephew of James. Between the years 1896 and 1963 he carried on the family tradition, painting Highland subjects on porcelain.
£80-120



240



242



243

243
John Atkinson
 (1863-1924)
 Striding out on the hunt,
 signed and dated 1920,
 watercolour,
 24 x 60cms, framed.
£150-250



244

244
Boris O'Klein
 (1893-1985)
 "Comme Nos Maitres",
 signed, entitled in pencil,
 watercolour,
 25.5 x 35.5cms, framed.
£200-300



245

245
Boris O'Klein
 (1893-1985)
 "Sens Interdit",
 signed, entitled in pencil,
 watercolour,
 25.5 x 35.5cms, framed.
£200-300

246
Boris O'Klein
 (1893-1985)
 An imposter in the ranks,
 signed,
 watercolour,
 25.5 x 35.5cms, framed.
£200-300



246

247
Boris O'Klein
 (1893-1985)
 Waiting,
 signed,
 watercolour,
 25.5 x 35.5cms, framed.
£200-300



247

248
Boris O'Klein
 (1893-1985)
 "Le Vernissage"
 signed, entitled in pencil and over-written in ink,
 watercolour,
 25.5 x 35.5cms, framed.
£200-300



248



249

249
John Cyril Harrison
(1898-1985)
A Woodcock and its Young,
signed,
watercolour,
23 x 33cms, framed.
£400-500

250-251
No Lots

Oil Paintings

Lots marked **δ** refer to Droit de Suite Royalty Charges - see Conditions of Sale on page 203.
Framed unless otherwise stated



252

252
George Augustus Freezor
(1838-1905)
Morning Prayers,
signed and dated 73,
oil on canvas,
70 x 95cms, framed.
£2,000-4,000



253

253
Ralph Hedley
(1848-1913)
"A Messenger for the Duke of Gordon",
oil on canvas laid down on board,
23.5 x 34cms, framed.
Provenance: Ex Julian Brown Collection.
£400-600



254

254
Ralph Hedley
(1848-1913)
The Moot Hall,
Indistinctly signed and entitled verso,
oil on canvas,
24 x 34.5cms, framed.
Provenance: Ex Julian Brown Collection.
£400-600

255
20th Century French School
 Guarded Trees,
 unsigned, dated 1928,
 oil on panel,
 24 x 31cms, framed.
£100-200



255

256
Robert Hope
 (Scottish, 1869-1936)
 Market Scene, Bruges,
 signed,
 oil on canvas,
 38 x 48cms, framed.
£500-800



256

257
John White RI ROI
 (1851-1933)
 Knitting in a Suntrap,
 signed and dated 87,
 oil on canvas,
 75 x 34cms, framed.
£500-800

258
Charles James Lewis
 (1830-1892)
 Offerings of Friendship,
 signed and dated 1863,
 oil on canvas,
 30.5 x 23cms, framed.
£1,000-2,000



258



257



259

259
Charles James Lewis

(1830-1892)
"Home Sweet Home",
oil on panel,
16.5 x 12cms, framed.

£300-500

260
Thomas Bowman Garvie

(1859-1944)
"Some Natures of Noville",
signed and dated 1908, signed and inscribed 'Royal
Academy 1909' verso,
with George Rowney & Co of London label,
50 x 40cms, framed.

£300-500



260

261
Arthur Hayes

(fl. 1880-1893)
"Fruit Seller",
attributed and entitled verso,
oil on panel,
26 x 23cms, framed.
Provenance: R & W Clarke, Cork.

£300-500

262
Alexander Rosell

(1859-1922)
"Sunday Morning",
signed,
oil on canvas,
31.5 x 24cms, framed.

£500-700



261



262



263



264



265

263
Attributed to Isabella "Isa" Jobling (nee Thompson)
(1851-1926)
Watchful Gaze of the Reed Gatherer,
oil on canvas laid down on board,
29.5 x 45cms, framed.
£300-500

264
Georges Dupre
(1807-1953)
"The Cheat" and "Ruined",
signed,
oil on canvas,
39 x 29cms, uniformly framed. (a pair)
£500-800

265
18th Century British School
Portrait of a lady in a petrol-blue poke bonnet,
oil on panel,
27 x 22cms, framed.
£200-400

266
J* S* W*
(19th Century)
Portrait of a young girl in reverie,
signed with a monogram and dated 1882,
oil on canvas,
54 x 39cms, framed.
£200-300

267
After Elisabeth Louise Vigée Le Brun
(19th Century)
"Self Portrait" (1790),
oil on panel,
21 x 16cms, framed.
£200-400



266



267

268

Arthur Hacker RA

(1858-1919)

Forget-me-not, portrait of a young lady in a powder-blue bustle dress clutching a love note, signed and dated 1883, oil on canvas, 60 x 45cms, framed.

£2,000-4,000



268



269

269

19th Century British School

Portrait of a young lady wearing a turquoise dress, indistinctly signed, circa 1890, oil on canvas, 29.5 x 25cms, framed.

£100-200



270

270

Attributed to Edward Charles Barnes

(1830-1882)

Portrait of a young girl resting at a wooden stile, oil on canvas, 34 x 24cms, framed.

£200-300



271

271
Gustave François Lasellaz
 (French, 1848-1910)
 The Artist's Muse,
 signed,
 oil on canvas,
 63 x 50cms, framed.
£400-600



272

272
Andrew Robertson
 (Scottish, 1777-1845)
 Portrait of Charles John Brandling
 (1769-1826),
 oil on panel,
 25 x 19cms, framed.
£300-500



273

273
John Joseph Leon Fauret
 (1863-1955)
 "[...] Exquisite"
 indistinctly inscribed, initialled and
 dated 07, signed and dated 1907
 verso,
 oil on canvas,
 53 x 44cms, framed.
£400-600



274

274
Thomas Waterman Wood
 (American, 1823-1903)
 Portrait of a lady on the Grand Tour,
 signed and dated 1857,
 oil on canvas,
 43 x 33cms, framed.
£500-800

275
Isabella "Isa" Jobling (nee Thompson)
 (1851-1926)
 "Dalehouse Yorkshire Cottage Garden",
 signed, signed and entitled verso,
 oil on canvas laid down on board,
 24.5 x 34cms, framed.
£400-600



275



276

276
J. J. Everard
 (fl.1845-1887)
 Coastal views with sailing ships,
 signed and dated 1884,
 oil on canvas,
 50 x 75cms, framed. (a pair)
£200-400



277

277
Edward William Cooke RA
 (1811-1880)
 Sailing boats beside a makeshift harbour,
 signed,
 10 x 20cms, framed.
£200-400

278
Attributed to Charles Thornely RBA
 (fl. 1858-1898)
 "Wind Against Tide, Barges at Mouth of the
 Medway",
 signed, entitled in pencil verso,
 oil on canvas,
 24 x 44cms, framed.
*Denys Brook-Hart writes in 'British 19th
 Century Marine Painting' (1974) about the
 mystery surrounding Thornely's name; "His
 normal signature is Thornely with the 'T'
 crossed through the 'H'... However he
 sometimes signed W.A. Thornbery,
 Thornberry, or Thornbury, and some
 authentic examples have been found signed
 Thornery."*
£300-500

279
19th Century British School
 "Premier' Built by Tulloch & Denny 1846,
 Still Sailing at Weymouth 1934"
 unsigned, entitled verso,
 oil on canvas,
 50.5 x 66cms.
£100-200



278



279



280

280
Attributed to William Thornley
 (Fl. 1858-1898)
 "The Medway Below Rochester",
 oil on canvas,
 39.5 x 60cms, framed.
£300-500



281

281
Style of Henry Perlee Parker
 (19th Century)
 A fisherman and family gathered beside a rock pool,
 oil on panel,
 33 x 44cms, framed.
£200-400

282
Matt Thomas
 (20th Century)
 Sailing Boat Navigating in Choppy Waters,
 signed,
 oil on panel,
 29.5 x 39.5cms, framed.
£80-120

283
John Bentham Dinsdale
 (1927-2007)
 "HMS Java and the USS Constitution",
 signed,
 oil on canvas,
 69 x 90cms, framed.
£400-600



282



283

284

Joel Owen

(fl. 1891-1931)

Atmospheric coastal views during the day and at dusk,
signed and dated 1920 and 1926,
oil on canvas, uniformly framed. (a pair)

£200-400

285

Max Sinclair

(fl. 1890-1910)

Breaking Storm over Tynemouth,
signed,
oil on canvas,
59 x 89cms, framed.

£300-500

285A

Attributed to Samuel 'Sam' Bough

(1822-1878)

Moored Boats, Low Tide,
bears signature,
oil on canvas
34 x 51.5cms, in a swept frame.

£200-£300



284



285



258A



286

286
William Crosby
 (1830-1910)
 "Derwentwater & Skiddaw from Ashness Bridge",
 signed and dated 1889,
 oil on canvas,
 34 x 44cms, framed.
£2,000-2,500

287
Henri de Beul
 (Belgian, 1845-1900)
 Flock of Sheep Enjoying Spring Sunshine,
 signed,
 oil on panel,
 22 x 33cms, framed.
£300-500

288
John Falconar Slater
 (1857-1937)
 Cottage Garden Ablaze with Blooms,
 signed,
 oil on board,
 44 x 54cms, framed.
£200-400



287



288



289

289

Alois Arnegger

(Austrian, 1879-1963)

View of a villa on the Riva del Garda, and the garden filled with a cacophony of colourful blooms, signed,

oil on canvas,

57 x 77cms, framed.

£1,000-2,000

290

20th Century French School

Terracotta tiled farmstead from the prospect of a river, indistinctly signed,

oil on canvas,

24 x 33cms, framed.

£100-200

291

Sidney Richard Percy

(1822-1886)

Late summer landscape under a cloud scudded sky, signed,

oil,

50 x 75cms, framed.

£1,000-2,000



290



291



292



293



294

292

Alois Arnegger

(Austrian, 1879-1963)

Luminous depiction of villas clustered around the Riva del Garda, signed,

oil on canvas,

56 x 77cms, framed.

£1,000-2,000

293

Alexandre Calame

(1810-1864)

Bridge Across Mountains, signed,

oil on canvas,

64 x 48cms, framed.

£800-1,200

294

Alfred Augustus Glendening Snr.

(1840-1910)

Quiescent North Wales river view with lone figure and Border Collie, signed 'A.A.G.' and dated 82,

oil on canvas,

39 x 60cms, framed.

£500-800

295

19th Century Italian School

Anglers at the edge of a lake foiled by a mountain settlement beyond, oil on canvas,

indistinctly inscribed to the stretcher,

61 x 93cms, framed.

£200-400



295



296

296
Frederick William Newton Whitehead
 (1853-1938)
 "A Stream Unfailing in the Summer Drought",
 signed, signed and entitled verso,
 oil on canvas,
 50 x 75cms, framed.
£400-800



297

298
John Falconar Slater
 (1857-1937)
 River and sky in tones of blue and emerald,
 signed,
 oil on board,
 55 x 78.5cms, framed.
£300-500

297
Alfred Augustus Glendening Snr.
 (1840-1910)
 Rural idyll with river and cataract mountains,
 signed 'A.A.G.' and dated 82,
 oil on canvas,
 39 x 60cms, framed.
£500-800

299
Peter Coulthard
 (b.1949)
 "Morning Mist in Affric Forest, Highlands",
 signed,
 oil on canvas,
 48.5 x 74cms, framed.
£200-300



298



299

All lots are subject to a Buyer's Premium of 22% plus VAT (26.4% in total)



300

300
Archibald David Reid ARSA
 (Scottish, 1844-1908)
 "Deeside",
 oil on canvasboard,
 35 x 52cms, framed.
£300-500

301
Attributed to James Barker Pyne
 (1800-1870)
 Romanticized Swiss lake view, with church steeple
 foiled against mountains,
 unsigned,
 oil on canvas,
 16 x 29cms, framed.
£100-200



301

302
Craig Dixon
 (19th Century)
 Golden hour view of a Scottish estuary,
 indistinctly signed and dated 1892,
 oil on canvas,
 37 x 59cms, framed.
£100-200



302



303



304

303
Hans Paap
 (German, 1890-1967)
 "Tenerife",
 signed and dated 1930,
 oil on canvas,
 72 x 77cms, framed.
£200-400

304
Clement Burlison
 (1815-1899)
 "Valle Ambrosia, Italy",
 old paper label verso inscribed with artist and title,
 oil on board,
 29 x 44.5cms, framed.
£200-300

305
20th Century Continental School
 View from the fork in the river,
 oil on canvas,
 121 x 182cms, framed.
£150-250



305



306

306

George Blackie Sticks

(1843-1938)

"Storm Clearing Off",

signed and dated 1879, signed, entitled and dated
verso,

oil on canvas,

60 x 90cms, framed.

£1,000-2,000



307

307
George Blackie Sticks
(1843-1938)
Dusk Falling Over Castle Ruins,
signed and dated 1896,
oil on canvas,
70 x 90cms, framed.
£2,000-4,000



308
George Blackie Sticks
 (1843-1938)
 "Loch Ard",
 signed and entitled to the back of the canvas,
 oil on canvas,
 39.5 x 54.5cms, framed.
£400-600

308



309

309
William McTaggart
 (Scottish, 1835-1910)
 "Evening on the Solway",
 signed,
 oil on board,
 62 x 74cms, framed.

Provenance: Royal Scottish Academy Exhibition label verso
£2,000-3,000



310
Emily Murray Paterson RSW SWA
 (1855-1934)
 Still Life with Peonies,
 signed,
 oil on canvas laid down on board,
 50 x 61 cms, framed.
£100-200



310

311
Edgar Hunt
 (1876-1953)
 The Stable Yard Birds,
 signed and dated 1936,
 oil on canvas,
 29.5 x 22cms, framed.
£2,000-3,000



311



312
18th Century British School
 Exaltations at the End of the Hunt,
 oil on board,
 28 x 39cms, framed.
£100-200

312



313
18th Century British School
 Gun Dogs and Grouse,
 oil on canvas,
 28 x 39cms, framed.
£100-200

313



314
*** Borofsky**
 (20th Century Continental School)
 Cockerel, Hens, and Chicks,
 signed,
 oil on canvas,
 59.5 x 49.5cms, framed.
£150-250

314



315

315

David Gauld

(Scottish, 1865-1936)

A pair of recumbent calves resting beside a
ramshackle barn door,

signed,

oil on canvas,

39 x 59cms, framed.

£4,000-6,000



316

316

John Cassell

(1817-1865)

The plight of terriers in a barn; Waiting For Supper,
and The Fight,

signed,

oil on canvas,

39 x 29cms, framed. (a pair)

£300-500



317

317

Frederick Thomas Daws

(1878-1956)

"The Linlithgow & Stirlingshire 'Factor'",

signed and inscribed,

oil on canvas,

50 x 60cms, framed.

£200-400

Rugs and Carpets at 2.45pm



318

318

A large Kirman carpet, the central floral medallion surrounded by foliate scrolls, on red ground, signed to one end, 495 x 367cms.

£300-500



319

319

A Kashan carpet, the central floral medallion surrounded by foliate scrolls, on ivory ground, 305 x 205cms.

£250-350



320

320

A Kashan rug, the central medallion and surrounding scrolls on green ground, 350 x 228cms.

£100-200



321

321
A Heriz carpet, the central rosette surrounded by floral scrolls, 322 x 233cms.
£250-350



322

322
A Kashan rug, with floral scrolls adorned with birds, on ivory ground, 340 x 222cms.
£300-400



323

323
A Kashan rug, the floral medallion and scrolling surround on ivory ground, 300 x 206cms.
£250-350



324

324
A Kirman carpet, the central rosette surrounded by floral scrolls and birds, on sky-blue ground, 440 x 298cms.
£300-500



325

325

A Gharabagh runner, the geometric panels in florescent colours, 421 x 142cms.

£200-400



326

326

A Mashad rug, decorated throughout with bold floral decoration, on ivory ground, 333 x 213cms.

£100-200



327

327

Rare Tehran carpet, the shield shaped field with floral and flowerhead design, 300 x 247cms.

£700-1,000



328

328
Nahavand runner, with five medallions and geometric design, 500 x 110cms.
£100-150



329

329
Antique Bakhtiari runner, with floral medallions and surround, 395 x 110cms.
£150-200



330

330
Qum runner, with rows of boteh motifs, 680 x 100cms.
£300-400

331

A large Ziegler carpet, with a floral scrolling design on a cream ground, 1007 x 573cms.
£1,500-2,500



331



332

332

A Kashan carpet, the central floral rosette surrounded by floral scrolls on red ground, 442 x 322cms.
£300-400



333

333

A Tabriz carpet, with panels of floral scrolls, interior scenes and arabic text, 283 x 192cms.
£150-200



334

334

A Bidjar carpet, the central panel and outer ground with geometric floral design, 266 x 132cms.
£100-200



335

335
A Caucasian runner, with shaped panels and stylized bird motifs, 308 x 144cms.
£70-100



336

336
A Caucasian Perpedil rug, with floral and scroll design on ivory ground, 146 x 103cms.
£70-100



337

337
A Sarab runner, with diamond and hexagonal shaped panels, 178 x 91cms.
£60-100



338

338
A Sarough Mahal rug, with diamond-shaped medallion surrounded by floral design, on red ground, 198 x 130cms.
£50-100



339

339
A Moud runner, with floral design on blue ground, 269 x 72cms.
£70-100



340

340
A Toyserkan rug, with floral decoration, 222 x 137cms.
£70-100



341

341
An Abadeh carpet, the central diamond-shaped medallion and surround with repeated floral decoration, 339 x 247cms.
£150-250



342

342
A Tabriz carpet, the central medallion surrounded by floral sprays and vases of flowers, 343 x 233cms.
£150-200



343

343
A Nain rug, with bold floral scrolls on a blue ground, 268 x 176cms.
£120-180



344

344
A Tabriz carpet, the central diamond-shaped floral medallion surrounded by foliate scrolls, on blue ground, 354 x 254cms.
£250-350



345

345
An Anatolian prayer rug, with geometric design, 200 x 111cms.
£70-100



346

346
A Hatchli rug, with panels of stylized motifs, 197 x 156cms.
£70-100



347

347
A Borchalou rug, with floral decoration of blue ground, 195 x 116cms.
£70-100



348

348
A fine Bidjar carpet, decorated with repeated floral sprays and medallions,
 330 x 240cms.
£600-800



349

349
A Karajeh rug, the floral medallions surrounded by stylized floral motifs, 183
 x 134cms.
£120-180



350

350
A Yalameh rug, with floral panels, 144 x 104cms.
£80-120



351

351
A Tabriz rug, the central rosette surrounded by floral scrolling design, 236 x 175cms.
£60-100



352

352
An Isfahan rug, the central rosette surrounded by floral scrolls, on an ivory ground, 182 x 135cms.
£60-100



353

353
A Tabriz runner, with stylized floral design, 272 x 85cms.
£70-100



354

354
A Heriz carpet, with geometric decoration, 284 x 289cms.
£400-500



355

355
A Kashan carpet, the central floral medallion surrounded by floral scrolls, on red ground, 305 x 203cms.
£100-200



356

356
A Tabriz carpet, with repeated boteh decoration, 305 x 216cms.
£350-450



357

357
A Varamin carpet, with flowerhead decoration on blue ground, 330 x 213cms.
£700-1,000



358

358
A Sultanabad carpet, with floral scrolls on a red ground, 420 x 326cms.
£500-800



359

359
A Kashan carpet, with floral scrolls on an ivory coloured ground, 430 x 311cms.
£500-700



360

360
A Malayer runner, with stylized flowerhead design, 404 x 100cms.
£150-200



361

361
A Turkaman rug, with 12 x 4 teke gul medallions, 306 x 210cms.
£300-400



362

362
A Sarough carpet, with floral scrolls on a red ground, 365 x 268cms.
£700-900



363

363
A Mostufi carpet, with floral scrolls on a blue ground, 380 x 284cms.
£1,200-1,500



364

364
A Heriz carpet, of stylized floral design on a red ground, 361 x 264cms.
£300-400

365

A Sarough Mahal carpet, the floral medallion on red ground, 420 x 340cms.
£300-400



365



366

366

A Kirman carpet, the floral medallion and full floral scrolling design on a red ground, 385 x 295cms.
£280-380

367

A Tabriz carpet, the bold floral scrolls on ivory-coloured ground, 426 x 320cms.
£400-500



367



368

368
A **Senneh runner**, with floral medallions and flowerhead design on a red ground, 397 x 123cms.
£200-300



369

369
A **Heriz runner**, with alternating geometric medallions and floral designs on ivory-coloured ground, 282 x 64cms.
£200-300



370

370
An **Afshar rug**, with three floral medallions and field with geometric design, 194 x 135cms.
£150-200



371

371
A **Bidjar runner**, the central medallion and pink field with floral scrolls, 338 x 79cms.
£120-180



372

372
A **Nain runner**, the blue floral scrolls on ivory-coloured ground, 292 x 67cms.
£150-200



373

373
A **Tabriz rug**, with repeated floral design, 298 x 192cms.
£150-200



374

374

A Tabriz carpet, the diamond-shaped medallion and field with flowerhead design, 398 x 292cms.

£400-500



375

375

A Brojerd rug, the lozenge-shaped medallion and blue field with geometric floral design, 200 x 128cms.

£150-200



376

376

A Tetex rug, with hexagonal and other medallions on a rust-red ground, 218 x 110cms.

£150-200



377

377
A **Tetex rug**, with stylized floral design on a blue ground, 218 x 112cms.
£300-400



378

378
An **Afshar rug**, with double medallion surrounded by flowerhead designs, 218 x 165cms.
£280-350



379

379
A **Tetex rug**, with hexagonal and other medallions on a rust-red ground, 219 x 110cms.
£300-400



380

380
A **Qum rug**, with floral medallion and light blue field, 219 x 138cms.
£180-250



381

381
A **Tetex rug**, with large flowerheads on a red ground, 220 x 111cms.
£300-400



382

382
A **Chinese carpet**, the diamond-shaped centre with interesting design, on rust-red ground, 243 x 260cms.
£250-350



383

383
A **Kirman carpet**, the floral design and scrolling field on beige ground, 298 x 183cms.
£500-600



384

384
A **Yalameh carpet**, with diamond-shaped design, 298 x 206cms.
£400-500



385

385
A Tabriz carpet, the floral rosette and scrolls to fields on ivory-coloured ground, 300 x 200cms.
£600-800



386

386
A Rodbar runner, with repeated tree and lantern designs on an ivory-coloured ground, 304 x 91cms.
£150-200



387

387
A Tabriz carpet, with bold floral design with red coloured central medallion, 316 x 217cms.
£400-600



388

388
A Heriz runner, with geometric floral designs and medallion on red ground, 333 x 119cms.
£150-200

389
An Ardebil carpet, the lozenge shaped field with flowerhead design, 336 x 249cms.
£250-350



389



390
A Tetex carpet, with bold floral design, 340 x 246cms.
£500-600

390

391
A Joshaghan carpet, the diamond-shaped medallion and floral sprigs on red ground, 348 x 243cms.
£280-350



391

392

A Tabriz carpet, the floral rosette surrounded by foliate scrolls on a blue ground, 349 x 226cms.
£400-600



392



393

393

A Tabriz carpet, with bold floral scrolls on an ivory-coloured ground, 349 x 240cms.
£500-700



394

394

A Joshaghan carpet, the diamond-shaped medallion surrounded by diamond-shaped floral panels, on red ground, 366 x 270cms.
£300-400



395

395

A Kashan carpet, the floral scrolls on an ivory-coloured ground, 368 x 271cms.
£500-600

396

A Qum carpet, with floral panels,
370 x 272cms.
£450-550



396



397

397

A Tetex carpet, with bold geometric
floral design, 400 x 290cms.
£350-450

398

A Kashan carpet, with floral scrolls on an
ivory-coloured ground, 242 x 295cms.
£500-700



398



399

399
A Bakhtiari carpet, with large floral panels, 429 x 330cms.
£1,000-1,500



400

400
A Kashan carpet, with floral decoration in light blue colouring, 448 x 318cms.
£1,500-2,000



401

401

An Isfahan carpet, the central rosette surrounded by floral scrolls, on an ivory-coloured ground, 450 x 326cms.

£800-1,200



402

402

A Mohajeran carpet, with bold floral designs on a red ground, 510 x 316cms.

£1,700-2,500



403

403

A Toyserkan runner, the floral medallions surrounded by flowerhead design, 536 x 121cms.
£350-450



404

404

A Varamin carpet, with repeated floral design on blue ground, 300 x 200cms.
£550-650



405

405

An Azabayejan carpet, with repeated scroll design on blue ground, 293 x 203cms.
£280-350



406

406

A part silk Qum carpet, the central rosette on dark blue ground, 363 x 227cms.
£400-500



407

407

A Kashan carpet, the central medallion surrounded by floral scrolls and ewers, 380 x 297cms.

£380-450



408

408

A Ladik prayer rug, with two tree pattern panels, 205 x 143cms.

£150-200



409

409

A Sarouh carpet, with diamond-shaped floral panels, 331 x 237cms.

£350-450

410
A Senneh carpet, the lozenge shaped fields
 with flowerhead design, 352 x 258cms.
£350-450



410



411

411
A part silk Isfahan carpet, the central
 rosette surrounded by floral scrolls on ivory-
 coloured ground, 368 x 279cms.
£400-500



412

412
A Yazd carpet, the central floral medallion, surrounded by foliate scrolls on blue ground, 389 x 298cms.
£400-500



413

413
A Qum rug, with huntsman with horseback and their quarry surrounded by floral scrolls, on blue ground, 210 x 135cms.
£250-350



414

414
A Mashad carpet, 386 x 255cms.
£400-500

415
A Kashan carpet, 402 x 292cms.
£400-500



415



416

416
A Tabriz carpet, 393 x 302cms.
£350-450

417
A Lory carpet, 307 x 207cms.
£250-350



417

418
A North West Persian carpet, 290 x 112cms.
£250-350



418

DAY TWO, Wednesday 30th March 2022

starting at 10.00am





419

419
A Chinese blue and white vase in Kangxi style, 19th Century, of slender ovoid form decorated in underglaze-blue with maidens on a garden terrace, 44cms high.
£200-£300



420

420
A 19th Century Cantonese famille rose vase, of shouldered ovoid form, decorated with panels of dignitaries and warriors on a ground of birds and flowers, chilong at the shoulders, double Buddhist lion handles, 46cms high.
£200-300



421

421
A late 18th Century Chinese blue and white ovoid jar and cover, with European 'clobbered' decoration decorated with dragons, flowers and a landscape, gilt ground, pseudo seal mark in iron-red, 21cms high, wood stand.
£200-300



422

422
A late 19th Century Chinese blue and white charger, decorated with pagodas, boats and islands within trellis band borders, 47cms diameter.
£200-300



423

423
A Chinese export model of a cockerel, 19th Century, with brightly coloured plumage and bright red wattle and comb, 30cms high.
£100-200

424
A late 19th Century Chinese crackle glaze vase decorated in underglaze-blue with birds, flowers and insects, within simulated bronze borders, 45cms high.
£30-60



424



425

425
A pair of Chinese famille verte bottle vases in Kangxi style, 19th Century, decorated with panels of figures, phoenix, landscapes, birds and flowers on a powder blue ground, four character Kangxi marks in blue, 28cms high. (2)
£200-300

426
A late 19th Century Chinese blue and white ginger jar and cover, decorated with barbed panels of birds and flowers on a ground of flowering prunus and cracked ice, 30cms. wood stand.
£200-300



426

427
A Chinese celadon ground famille rose jar and cover, 19th Century, decorated with antiques and Buddhist emblems, 23cms high. wood stand.
£100-200

428
A 19th Century Cantonese famille rose plate, decorated with officials and attendant figures within a border of birds and flowers, 21.5cms diameter; and two celadon ground Canton plates, 19cms diameter. (3)
£50-70



427



428



429

429

A Chinese export blue and white meat plate, Qianlong, of canted rectangular form, decorated with pheasants, rockwork and flowers, 31.5cms; a fluted circular **Chinese shallow dish**, Kangxi, decorated in underglaze-blue with birds, rockwork and flowers, single character mark, 22cms diameter; and a **Chinese octagonal blue and white plate**, Qianlong, decorated with cranes, pine tree, rocks and peony, 22.5cms. (3)
£150-200



430

430

A pair of Chinese blue and white Dragon bottle vases, 18th Century, each well decorated with a sinuous dragons and leafy fronds, ruyi head borders, each 19.5cms. (2)
£400-600



431

431

A late 19th Century Chinese crackle glaze baluster vase and cover, decorate in underglaze-blue with figures, fence and rockwork, within simulated bronze borders, four character incised brown seal mark, 31cms high, wood stand.
£60-100



432

432

A late 19th Century Chinese blue and white vase in Kangxi style, of square tapering form, decorated with panels of flowers and rockwork, on a foliate scroll ground, four character Kangxi mark, 23.5cms.
£80-120



433

433

A late 19th Century Chinese blue and white moon flask, decorated with maidens in gardens, ruyi sceptre handles, four character Kangxi mark, 20.5cms high.
£50-70



434

434

A Chinese blue and white charger, 19th Century, decorated with flowers leaves and scrolls, artemisia leaf mark, 39cms diameter.
£80-120



435

435

A Chinese 'Imari' bowl, Qianlong, decorated in underglaze-blue, iron-red and gilding with growing flowers and pomegranates, 22.7cms diameter; and a **Chinese 'Imari' saucer dish**, 22.7cms. (2)
£60-120



436

436

Pair of Chinese famille rose vases, decorated with roses and pink foliate panels, 21.5cms high; along with a **Qing Chinese tea bowl** and a **Chinese circular plate** decorated with two female figures. (3)
£100-200

437

A small early 19th Century Chinese blue and white export tureen and cover, decorated with a stylized landscape with pagodas, boats and bridges, 21cms; and an **18th Century small Chinese export blue and white meat plate** similarly decorated, 26cms. (2)
£70-100



437





438

438
A Chinese famille rose baluster vase and cover,
20th Century, decorated with boys playing in a
garden, stencilled seal mark Made in China, 34cms.
£50-70



439

439
A clobbered Chinese small vase or caddy and
cover, late 18th Century, decorated in underglaze-
blue with dragons, enamelled with flowers and
butterflies on a solid gilt ground, pseudo seal mark
in iron-red, 15cms high, wood stand.
£100-150



440

440
A pair of 19th Century Cantonese famille rose
vases, decorated in typical palette with panels of
figures, birds, flowers and insects, 25cms high. (2)
£100-200



441

441
A 19th Century Cantonese lobed oval small
tray, decorated with panels of figures, birds,
flowers and insects, 26cms; two small Cantonese
teapots, 6cms and 7.5cms high; and two
Cantonese cylindrical tea kettles and covers,
11.5cms and 13cms.
£150-200



442

442

A small pair of Cantonese vases, decorated in typical palette with figures, birds, flowers and insects, applied at the shoulder with gilt chilong, 13cms; and **Cantonese vase** with figural decoration with lion mask and ring handles, 20cms. (3)
£100-150

443

A 19th Century Canton famille rose bowl decorated with a continuous scene of figures on a terrace, 10cms; a **Canton saucer dish** decorated with figures birds and flowers, 21cms; **two Canton saucers**, 15cms and 15.5cms, and a **bowl stand**, 10cms. (5)
£50-70



443



444

444

A pair of 19th Century Chinese famille verte bottle vases in Kangxi style, decorated with dignitaries on a terrace, 21cms; and a pair of **19th Century Chinese blue and white jars and covers**, decorated with dragons and flowers, four character Kangxi marks, 15cms. (4)
£100-150

445

A pair of Chinese blue and white jars and covers, 19th Century, each of cylindrical for, decorated with dragons and flowers, ruyi head border, four character Kangxi marks, 15cms. (2)
£50-80



445



446

446

An 18th Century Chinese famille rose fluted bowl, Qianlong, the exterior painted with birds and flowering foliage, the interior with turquoise trellis border, 23.5cms diameter.
£100-200



447

447

A Chinese famille rose slender baluster vase, Qing, painted with swallows perched upon flowering prunus branches, chrysanthemum, peony and butterfly above a pink and turquoise enamelled border, glued to a turned hardwood base, 38cms high overall. **£200-400**



448

448

A pair of 19th century Cantonese famille rose cylindrical brush pots, each decorated with figures, flowers, birds and insects, gilt ground, each 12.2cms high. (2) **£100-200**



449

449

A pair of small late 19th Century Chinese blue and white baluster vases, each decorated with figures in a lakeland mountain landscape, 14cms; and **a late 18th Century Chinese famille rose bowl** with floral decoration, 14.5cms. (3) **£40-60**



450

A pair of Chinese crackle glaze sleeve vases, decorated in underglaze-blue with dragons and foliage between simulated bronze borders, 30cms; and **a similar baluster vase and cover,** decorated with birds and flowers, 32cms. (3) **£80-120**

450



451

451
A pair of Chinese Tiltworks style Buddhist lions or Fu dogs, depicted with young and a brocade ball, glazed in green-brown glazed highlights, each 20cms high.
£300-400



452
A Chinese blue and white bottle vase, late 19th Century, well decorated with lilies and chrysanthemums on a formal scroll ground, 35.5cms.
£200-300



452



453

453
A Chinese crackle glaze celadon bottle vase, with tall cylindrical neck and compressed globular body, 16.5cms.
£200-300

454
A Chinese Longquan Crackle Glaze Celadon Vase, of Gu form, probably early Ming dynasty, 30cms high.
Provenance:- This piece was purchased by the present owners' grandfather whilst working in Shanghai in the 1920's.
£500-800



454



455



455

A Chinese famille rose plate, Qianlong, enamelled with flowers and ribbons within an iron-red and gilt foliate scroll border, 23cms diameter; and a **Chinese blue and white plate**, Qianlong, with stylized garden pattern, 22.5cms diameter. (2)
£60-80



456



459

456

A pair of Chinese covered bowls in Kangxi style, each decorated with barbed panels of flowers and birds, on a blue scroll ground decorated with coloured medallions, all above Buddhist symbols in iron-red, six character Kangxi marks in underglaze-blue, 11cms diameter, 9cms high.
£100-150

457

A 19th century Chinese Batavian ware small basin with blue and white trellis and foliate scroll interior, 'café au lait' exterior, 27.5cms diameter.
£100-150



457

458

A Chinese flambe glazed figure of a phoenix, 19th Century, depicted resting on a tree stump support with lingzhi fungus, blue to purple streaked glaze, later fitted stand, 55.5cms high.
£200-300

459

A late 18th Century Chinese export blue and white part tea service comprising: eight tea bowls and saucers, two damaged tea bowls, and a milk jug.
£100-200

460

No Lot

461

A Chinese carved rootwood figure of a water buffalo, early 20th Century, with small farmer figure riding on its back, inset bead eyes and bone teeth, 27cms.
£70-100



458



461



462

462
A collection of six Qing Chinese xiuhua / needlework pictures, many incorporating "forbidden stitch" embroidery, including a pair of robe or sleeve cuffs, 56 x 13cms; a circular panel with a goldwork-embroidered dragon chasing a flaming pearl, 26.5cms; a tea tray depicting a Foo Dog; and a view of a deer and crane, 36 x 32cms, each framed under glass. (6)
£100-200



463

463
A 19th Century Chinese carved ivory card case of small proportions, carved with figures, trees and pavilions, 8.5cms x 4.7cms.
£100-200

464
A Chinese famille rose porcelain snuff bottle, moulded in relief and picked out in colours with deities, pale green bowenite stopper, seal mark in red, 8cms.
£40-60



464



465

465
Four contemporary Chinese inlaid snuff bottles, decorated with mother of pearl, malachite and lapis lazuli, 6cms to 8cms. (4)
£60-80



466

466

A Chinese labradorite snuff bottle, carved with stylized dragons, 7cms; and a green hardstone snuff bottle carved with a crane and pine tree, malachite stopper, 6cms. (2)
£40-60



467

467

Three Chinese carved nephrite snuff bottles, one with Shou Lao and a bat, another with a kingfisher and fish, and another with carp, 5cms to 7cms. (3)
£60-80



468

468

Two Chinese erotic moulded porcelain snuff bottles, picked out in colours, four character marks, 7cms; and two Chinese moulded porcelain snuff bottles decorated with figures, rainbow stoppers, 6cms and 7cms. (4)
£60-80



469

469

A Chinese pale celadon porcelain snuff bottle, moulded with Putai on a lotus throne, 7.5cms; another decorated in famille rose colours with two maidens in a boat, 7cms; and another decorated 'en grisaille' with mountain gardens and verse, 6.7cms. (3)
£60-80



470

470

A Chinese agate glass snuff bottle with lion mask and ring handles, 7.5cms; **a brown soapstone snuff bottle**, engraved with figure and crane, 6.5cms; and **a cinnabar lacquer snuff bottle** carved with flowers, 7.5cms. (3)
£50-70



471

471

A 19th Century Chinese 'Mandarin' fan, Qing, with finely carved ivory guards and splines, the paper painted in watercolour and bodycolour with a ceremonial procession, framed and glazed within a European giltwood and gesso fan-shaped frame, 57.5cms wide; and **an early 19th Century French fan**, with finely carved and pierced ivory guards and splines, painted in watercolour on paper with a classical scene with Roman figures in parkland, framed and glazed within a European giltwood and gesso fan-shaped frame, 59.5cms across. (2)
£300-400



472

472

A Chinese cinnabar lacquer square tray, carved with figures, pagodas, boats and islands on a ground of diaper and waves, square seal mark to reverse, 42cms.
£150-200



473

473

A Chinese carved Jade figure of a recumbent Buddhist lion, Qing, the stone on an even pale green colour with rust inclusion to the reverse, details finely carved and engraved, contemporary carved hardwood fitted stand, 6.6cms x 5cms. (2)
£200-400



474

474
An early 20th Century Chinese watercolour scroll painting depicting a waterwheel in landscape, signed, approximately 117cms x 40cms.
£50-80



475

475
An early 20th Century Chinese scroll watercolour painting of a cockerel, signed, approximately 66cms x 44cms; **another** with Lotus leaves and insects, approximately 98cms x 33cms. (2)
£60-100



476

476
An early 20th Century Chinese scroll painting with ox cart in mountainous landscape, signed, approximately 92cms x 48cms; and **another** with lakeland landscape and pagodas, approximately 117cms x 62cms. (2)
£60-100



477

477
An early 20th Century Chinese watercolour scroll painting, cranes in a landscape, approximately 84cms x 84cms.
£100-200



478

478
A Chinese circular fan painting on silk, 19th Century, with a hunter and boy attendant approaching a hut in a mountain landscape, seal mark and inscription, 24cms diameter, framed and glazed.
£60-100



479

479
A Chinese monochrome scroll painting, decorated in black with landscape, signed and titled, 65cms x 43cms; and **another** with calligraphy inscription and foliage, signed, 126cms x 33cms. (2)
£60-80



480

480
A rare 19th Century Chinese embroidered silk Han society women's informal overcoat or waitao, fastening down the centre front, in Ming style, and finely embroidered on the front and back in satin stitch, depicting a kaleidoscope of butterflies and moths sewn over a midnight-blue ground, the deep yellow sleevebands meticulously embroidered with "forbidden stitch" Chinese knots and applied gold fabric depicting brightly-coloured butterflies and blossoming vines, blue lining, 142cms wide x 73cms long.
£200-400



481

481

A Japanese Arita bowl, Meiji period, the exterior painted with fish, shellfish and weeds above stylised waves, the interior with flowering prunus borders, four character mark in blue, 23cms diameter.

£80-120

482

A pair of Japanese Imari dishes, Edo period, late 17th/ early 18th Century, each decorated with a central vase of flowers within a border of fences and flowers, spur marks to bases, each 24.5cms diameter. (2)

£200-300



482

483

An unusual early 20th Century Japanese earthenware vase painted with butterflies on a graduated blue ground between diaper borders, impressed and script marks, 22cms high.

£50-70



483



484

484

A pair of late 19th Century Japanese porcelain sleeve vases, each decorated with pheasants, rockwork and flowers, 31.5cms high. (2)

£80-120

485

A late 19th Century Japanese ivory okimono carved with five clothed monkeys holding various tools, one smoking a pipe, signed, 10cms high, 11.5cms wide.

£80-120



485



486

486

A Japanese carved ivory figure of a Bijin, Meiji period, depicted in traditional dress and holding a samisen, the details finely engraved, signed, 16.5cms.

£60-100



487

487

A Japanese carved ivory okimono of a farmer, Meiji period, well carved with a large straw hat, snails on his back and at his feet, 16cms.

£60-100



488

488

A Japanese carved ivory okimono, Meiji period, in the form of a seated man eating from a lunch box, a bird perched on his shoulder, signed, 13.5cms.

£60-100



489

489

A Japanese carved ivory okimono of a fisherman, Meiji period, seated on a stool with broad straw hat, holding a bamboo rod and carp, a small seal at his side, 13.5cms.

£60-100



490

490

A small Japanese marine ivory okimono, Meiji period, carved as a boy and a man holding a Noh mask, 10.5cms.

£60-80



491

491

A small Japanese ivory okimono, Meiji period, carved as a man holding a tea kettle and a small boy with bundle, signed, 7cms.

£50-80



492

492
A Japanese carved ivory netsuke, Meiji period, in the form of a group of boys with ceremonial dragon, drum and fans, signed, 4.5cms.
£50-80



493

493
A Japanese carved ivory netsuke in the form of a seated man with large drum, 3.5cms; another in the form of a fisherman with a basket of crabs, Japanese ivory carvings.



494

494
A late 19th Century Japanese carved ivory okimono in the form of a seated smiling man playing a drum, 5.6cms; and another in the form of a farmer with bundle of fruit and hoe, 12cms.
(2)
£60-80

495
A Japanese Champleve enamel bronze vase, 20th Century, with double phoenix head handles, bands of enamel decoration, 30cms high.
£40-60



495



496

496
A Japanese ivory okimono, Meiji period, well carved with Oni scrambling over two large conch shells, two character signature on red lacquer seal, 9cms high.
£200-300

497
A small Japanese sectional ivory table shrine, Meiji period, carved with deities, bamboo, lilies and landscapes, 15.5cms.
£50-70



497



498



499



501



500

498
A late 19th Century Japanese marine ivory figure in the form of a Bijin with parasol, fitted wood stand, 27cms.
£60-80

499
A Japanese marine ivory okimono, Meiji period, in the form of a bijin holding a peony frond, 21cms.
£60-100

500
Keika Hasegawa (active 1892-1905), A set of sixteen Japanese woodblock prints of chrysanthemums, hand coloured from the series One hundred Chrysanthemums published by Jihei Tanaka 1894 in Kyoto, plus 4 pages of calligraphy being the frontispiece information, 32cms x 22cms unframed.
£600-800

501
Sakai Hoitsu (1761-1828), Japanese, watercolour, Dead rat in the rain, signed in ink and with chopmark, 22.5cms x 17cms.
£100-200

502
No Lot

All lots are subject to a Buyer's Premium of 22% plus VAT (26.4% in total)

British Ceramics

503

A mid 19th Century Staffordshire flower encrusted composite garniture, comprising a central vase encrusted and applied in high relief with coloured flowers and foliage, on a cobalt blue ground, double scroll handles; **a pair of matching smaller vases**; and a pair of similar vases and covers with double scroll handles, 21cms to 26cms high. (5)
£150-£200



503



504

504

A rare Worcester small teapot and cover, circa 1770, decorated in colours with 'the lady at the loom' pattern, an oriental woman wearing an elaborate headdress, seated at a loom, with rockwork and flowers, 13cms high.
£200-300

505

A pair of late 18th Century Liverpool polychrome saucers, probably Seth Pennington, printed and painted with ducks, butterfly and peony, 12cms diameter. (2)
£40-80

506

A Derby cream boat, circa 1770, decorated with flower sprays and sprigs, 12.5cms long, 5.5cms high.
£100-200



505



507

507
A mid 19th Century Staffordshire pottery figure of a pigeon, brightly coloured on a grassy base, 24cms high.
£30-50



506



508

508
A pair of Spode pearlware blue and white Cacamanian series chestnut baskets, each printed with Sarcophagi at Cacamo within a border of elephants, rhinoceros, cattle, figures and huts after the engravings by Luigi Mayer titled 'Sarcophagi and Sepulchres at the head of the harbour of Cacamo', printed marks in blue, impressed F, 23cms. (2)
£100-150

509
A Minton terracotta charger, 1882, painted with a green parrot perched on a vine branch, green glazed ground, unsigned, printed and impressed marks including date cypher for 1882, and retailers mark for Thomas Goode & Co, 38.5cms diameter.
£100-150



509

510
An early 19th Century soft-paste porcelain part tea set, probably Worcester, each piece painted with floral sprigs on a fluted ground, comprising: four cups and saucer, milk jug, sucrier and cover, teapot stand and slop basin.
£50-70



510



511

511
A pair of Staffordshire spaniels with free-standing front legs, yellow and black eyes, green and pink lustre decoration, 23.5cms, two other Staffordshire dogs with copper lustre decoration, 16cms and 24cms. (4)
£80-120



512

512

A large Staffordshire copper lustre porter mug with two pink lustre vignettes of a stylised country house, 12.5cms; a small copper lustre mug with strawberry decoration, 8.5cms, a copper lustre goblet with pink lustre decoration, 11.5cms; and a silver lustre goblet, 12cms. (4)
£50-70



513

513

Three early 19th Century Wedgwood pearlware small plates, decorated in pink lustre with stylized cottage and trees, 13cms diameter. (3)
£30-50

514

A Doulton Lambeth stoneware jug by Mark V Marshall of slender ovoid form, applied with acanthus leaf decoration on a blue scroll ground, impressed 'Doulton Lambeth' and incised '919. M.V.M.' 'PB', 22.5cms.
£250-350



514



515

515

A 19th Century Brampton salt-glazed stoneware spirit barrel, sprigged with the Royal Coat of Arms and lions, flanked by Prince of Wales feathers, impressed 1 GALL, 25.5cms; and another similar with Royal Coat of Arms, flanked by stars and lions, traces of cold decoration, 28cms. (2)
£100-200

516

A Doulton Lambeth Stoneware Boer War commemorative tyg circa 1900, of cylindrical form with three lug handles, inscribed 'IN COMMEMORATION OF THE HOISTING OF THE BRITISH FLAG AT PRETORIA GOD SAVE THE QUEEN' sprigged with the emblems of the union above an oval portrait of Queen Victoria flanked by the Union Flag and Royal Ensign Flag within beaded borders, impressed marks 'Doulton Lambeth England' impressed 22 and painted Ex 5616, 16.5cms high.
£200-300

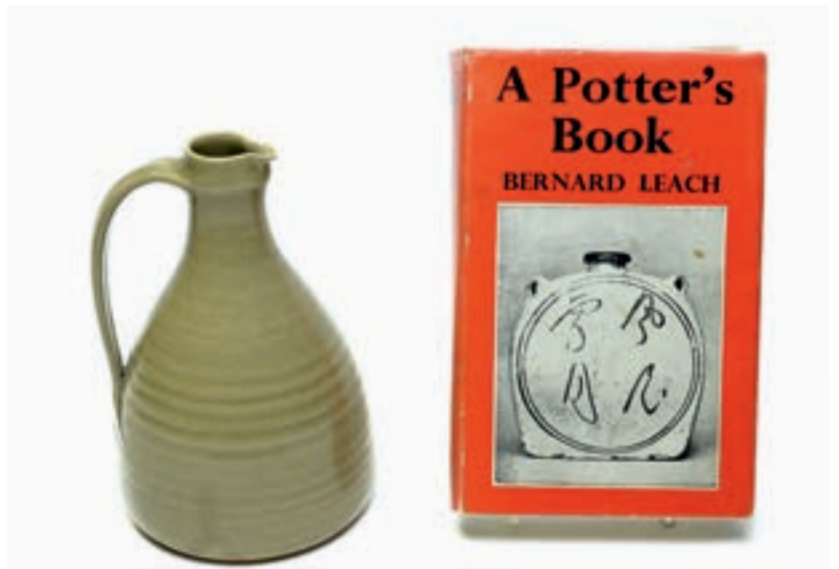


516



517

517
A Carter, Stabler and Adams, Poole group 'The Bull', designed by Harold and Phoebe Stabler, depicting two cherubs festooned with roses, riding a tasselled bull. all picked out in coloured glazes, on a canted rectangular base, impressed seal mark 'Carter, Stabler, Adams, Poole England', 35cms long, 43cms high.
£400-600



518

518
A St. Ives pottery stoneware jug of ribbed bottle kiln form with applied strap handle, pale olive-green glaze, impressed St Ives mark, 19cms; and **a copy of Bernard Leach, A Potter's Book**, published by Faber and Faber. (2)
£60-100



519

519
A small Royal Worcester plaque by Nigel Creed (b.1947), painted with a grouse in a moorland lakeland landscape, signed N.CREED, framed, 9.2cms square.
£100-150



520

520
A Royal Worcester fruit painted dessert plate by Albert Shuck (1880-1961), with pears, raspberries, leaves and flowers within a rich salmon pink and gilt border, signed A.Shuck, printed marks in puce including date cypher for 1926, 23cms diameter.
£200-300



521

521
A Royal Worcester plate by Raymond Rushton (1886-1956), painted with 'Bluebells. Kew Gardens', signed and titled to the reverse, printed marks in blue including date cypher for 1937, 27.5cms diameter.
£100-150



522

522

A Royal Worcester fruit painted plate by John Smith, decorated with pears, blackberries and raspberries, leaves and moss, gilt gadrooned rim, signed printed mark in black, 27cms diameter.
£200-300

523

Daisy Makeig-Jones for Wedgwood. An 'Argus Pheasant' or 'Phoenix' pattern lustre vase, (pattern Z5486) circa 1928, of slender bluster form (shape number 3148), decorated with phoenix, rockwork and peony on a blue printed diaper ground, all picked out in gilding, printed Portland vase mark, incised X4 3148, 26.5cms high. For a similar example see Una Des Fontaines, Wedgwood Fairyland Lustre, page 257, plate 69.
£400-600



523

524

A small Royal Worcester vase of compressed globular form with trumpet neck, painted and signed by James Stinton with a cock pheasant, printed marks in green including date cypher for 1902 and shape number 799/G, 12.5cms high.
£100-200



524

525

A Moorcroft Pomegranate pattern cylindrical small dish, tube lined and picked out in glazes, impressed MOORCROFT BURSLEM, script WM signature in green, 9cms diameter.
£40-60



225



526

526

Daisy Makeig-Jones for Wedgwood. A Wedgwood Fairyland lustre bowl, the exterior decorated with 'Poplar Trees' the interior with 'Woodland Elves III-feather hat' pattern, printed Portland vase mark in gilding, inscribed Wedgwood England, shape number Z 4968 in black, 24.7cms diameter.
£2,500-3,000



527



527
A Sunderland creamware splash lustre christening mug, circa 1820, inscribed in black 'Dorothy Charlton' within a rectangular resist panel, pink splash lustre ground, 8cms; and a Davenport child's mug printed in puce with 'Teaching Tray to Dance', pink lustre rim, 6.7cms. (2)
£50-70

528
A Sunderland lustre bowl, circa 1840, printed with 'The Good Wife' and a sailing ship in black, pink splash lustre borders, the interior printed with the Iron bridge over the Wear, 16.5cms; and a Sunderland lustre mug printed and painted with 'The Mariners Arms' and the verse 'The Sailors Tear', 9.5cms. (2)
£50-70



528



529



529
A CT Maling lustre basin, printed in black with 'Crimea', 'The Sailor's Farewell', 'Return True Love', etc, within pink lustre wash line borders, impressed mark, 29cms; and another Sunderland lustre basin printed with 'Mariners Arms', 'The Sailors Tear' and others within pale pink lustre slash borders, 32.5cms. (2)
£70-100

530
A Dixon & Co Sunderland pink splash and copper lustre wall plaque, circa 1840, of rectangular form, printed in black with the scripture title 'Behold GOD will not cast away a perfect man, neither will HE help the evil doers. Job.8.20.', impressed mark Dixon & Co, 20cms x 23cms.
£50-70



530



531

531

A pair of Sevres soft-paste porcelain preserve jars and covers by Jean Baptiste Tandt, circa 1770, each decorated with rosebuds and sprigs within a green berried wreath border, the covers with flower finials, gilt dentil rims, one with blue interlaced L's mark with dater letter R for 1770 and three dots for Jean Baptiste Tandt (1754-1803), each with suspension hole to base, one with incised square, each 9.5cms high. (2)
£500-1,000



532

532

An interesting Faience holy water stoup, dated to the reverse 1742, moulded with the Madonna and Child surrounded by winged cherubs, pencilled in black and picked out in cobalt blue, shell form water well, pieced suspension hole, indistinct mark in blue with the date 1742, 43cms x 27cms.
£400-600



533

533

V Gossens. French 19th/20th Century: a French earthenware rectangular plaque, painted in enamels with a fishergirl seated on a headland looking out to sea, signed, 20cms x 30cms.
£120-180

534

An early 20th Century Continental porcelain figure of a green parrot, after a Meissen original, tree stump base applied with acorns and oak leaves, gilt anchor mark, 35cms high.
£80-120



534



535

535
An early 20th Century Dresden cabinet plate, decorated after Angelica Kaufmann with Rinaldo and Armida within a rich green and gilt border, signed Kaufmann, stencil mark in blue, titled to the reverse, 20cms diameter.
£60-80



536

536
A pair of Royal Dux figures of classical potters, circa 1910, one figure throwing a pot, the other decorating a pot, picked out in pastel tones, oval moulded bases, applied pink triangle marks impressed 'Royal Dux Bohemia' impressed shape numbers 349/4 and 350/4, 30cms high. (2)
£100-200



537

537
A pair of 19th Century French gothic revival porcelain scent bottles, possibly Jacob Petit, Paris, each of architectural form, with a medieval male and female head, each wearing a pink plumed headdress, with floral painted panels and armorials, on a green, crimson and gilt ground, one with stopper, and cased under glass domes, each 27cms high.
£100-£200



538

538
A pair of Paris porcelain vases, encrusted with flowers and painted with musical vignettes on a blue and gilt ground, 22.5cms. (2)
£80-£120

Glass



539

539
An 18th Century English wine glass, circa 1770, with ogee shaped bowl above a multi-series opaque twist stem and conical foot, 5cms wide at the bowl, 7cms wide at the base, 15.7cms high.
£200-300



540

540
A George III wine glass, circa 1760, with bell-shaped bowl and multi-series opaque twist stem, conical foot, 8.5cms high, 7.5cms wide at the bowl, 8cms wide at the base.
£100-200



541

541
A large early 19th Century Masonic goblet with deep U shaped bowl, engraved with Masonic symbols and initials GMD, all within a feathered of floral border, and engraved with a Gun dog beneath the letters 'TO.HO'; and dated 1821 (possibly later), above an opaque multi-series twist knopped stem and high conical foot, 30.5cms high, 13cms wide at the rim, 14.7cms wide at the foot.
£140-180



542

542
A set of four 19th Century engraved wine glasses, each with bucket-shaped bowl, plain stems and conical feet, engraved with a cock fighting scene, 8.5cms. (4)
£100-200



543



544



545

543

A mid 19th Century heavy cut glass decanter and stopper, with faceted shoulders and split cut sides, with later silver collar stamped Edward Glasgow, hallmarked Birmingham 1936, 25cms high.
£100-150

544

A pair of early 19th Century cut glass decanters and stoppers, of mallet shape, the shoulders and necks faceted, engraved with flower swags, hob-nail cut sides and star cut bases, 22cms. (2)
£200-300

545

An early Georgian style trumpet-shaped wine glass, with tear knopped stem and folded conical foot, rough pontil mark, 23.2cms high.
£60-100



546

546
A Lalique opalescent glass bowl 'Poissons',
moulded with spiralling fish and bubbles, etched
mark R. LALIQUE FRANCE, 24cms diameter.
£200-300

547
A Lalique 'Bulbes' pattern opalescent bowl,
moulded with leaf striations and bulbs, etched
mark R. LALIQUE FRANCE, 20.2cms diameter; and a
Lalique 'Bulbes' pattern dish, with old staple
repair, 25cms diameter. (2)
£250-350

548
No Lot



547

Clocks & Barometers at 12 noon

549

An impressive German late 19th Century carved oak quarter-chiming bracket clock, the brass dial with silvered roman chapter ring, slow/fast dial to arch, two-train Lenzkirch movement, architectural case with brass urn finials, arched door with bevelled glass plate, flanked by gilt metal caryatids, stepped platform base with gilt metal caryatid supports, 36 x 69cms high; together with a matching wall bracket, 43 x 36cms high. £500-700



549



550

A George IV rosewood and brass inlaid bracket clock, the painted roman dial with twin fusee movement striking on a gong, pull repeat button to side, the ornate case with leaf carved top, raised on brass ball feet, 30 x 53cms high. £300-500



550



551

551

Jon (Jon) Ellis of Sherbourne: an ebonised and carved oak longcase clock, the 10in. (25cm) dial with silvered chapter ring, mask and scroll spandrels, matted centre, two train movement with anchor escapement and bell, the associated carved case with caddy top, blind fret frieze, square glazed and carved door flanked by columns, rectangular carved waist door and carved panel base on bracket feet, with weights and pendulum, 223cms high. £200-300



552

552
C. Hunter of Newcastle: a mahogany longcase clock, the brass dial with roman chapter ring, outer arabic numerals, subsidiary seconds and date dials, name plaque to arch with coat of arms surround, eight-day movement with anchor escapement, the arched top with glazed door and columns, above a shaped and banded waist door flanked by canted corners, panel base, bracket feet, with weights, pendulum and winding key, 207cms high.
£100-200



553

553
R. Crawford of Glasgow: a mahogany longcase clock, the arched brass dial with silvered roman chapter ring, with outer arabic numerals, subsidiary seconds dial to matted centre, tempest fugit plaque to arch, eight-day movement with anchor escapement, the case with swan neck pediment, the glazed door flanked by fluted columns, arched waist door, panel base, on bracket feet, with brass weights, pendulum, and winding key, 220cms high.
£200-300



554

554
William Bontell of London: an oak longcase clock, the square brass dial with silvered roman chapter ring, outer arabic numerals engraved, the matted centre with subsidiary seconds dial and date aperture, eight-day movement with anchor escapement, the top with glazed door flanked by columns, rectangular waist door with lenticule glass, panel base on plinth, with weights and pendulum, 204cms high.
£200-300



555

555

William Busby of Yarm: a mahogany longcase clock, the painted roman dial with outer arabic numerals, subsidiary seconds dial and date aperture, moon phase to the arch, the eight-day movement with anchor escapement, the case with pierced fretwork frieze above an arched glazed door flanked by fluted columns, shaped and moulded waist door flanked by fluted quadrant columns with glass detail, panel base on bracket feet, with weights and pendulum, 224cms high. **£400-600**



556

556

W. Alexander, Hexham: a mid 19th Century oak and mahogany banded longcase clock, the painted roman dial with central date aperture, with foliate spandrels and a hare hunting scene to arch, 30-hour movement with anchor escapement, the case with fretwork frieze and finials of glazed door columns, arched waist door flanked by quadrants, panel base, with weight and pendulum, 223cms high. **£200-300**



557

557

Whitnell of Newcastle: a 19th Century mahogany longcase clock, the painted roman dial with subsidiary seconds and date dials, pagoda spandrels with Asian figure and bird to arch, eight-day movement with outer escapement, the arched case top with glazed door and brass finials, arched waist door flanked by columns, panel base on turned feet, with weights, pendulum and winding key, 237cms high. **£200-300**



558

558
An inlaid mahogany longcase clock, the brass dial with roman chapter ring, engraved centre with subsidiary seconds and date dials, rocking ship and coastal scene to arch, eight-day movement with anchor escapement, the case with dentil cornice above an arched glazed door and columns, arched waist door with shell motif, panel base with bracket feet, with weights, pendulum and winding key, 224cms high.
£100-200



559

559
Blackett Wallace (possibly of Brampton): an oak longcase clock, the arched brass dial with roman chapter ring, outer arabic numerals, with matted centre and subsidiary seconds dial, eight-day movement with anchor escapement, the case with swan neck pediment of arched glazed door and columns, arched waist door and panel base, with weights and pendulum, 208cms high.
£100-200



560

560
Vincenti & Cie, France: a white stone and gilt metal mantel clock, the white enamel arabic dial fitted an eight-day barrel movement striking on a bell no.17164, the urn cresting above a beaded and draped structure, on bead mounted base, raised on metal feet, 35cms high.
£100-200



561

561
A Louis XV style bouille work and gilt bronze mantel clock, enamelled roman numerals and outer arabic numerals, two-train movement striking on a gong, numbered 12286, the ornate case with rococo style gilt bronze mounts, the dial with retailers mark 'Hall & Edwards', 22 x 35cms high.
£150-250



562
An Art Deco Jugendstil oak cased mantel timepiece, the arabic brass dial fitted single train Junghans movement with stylized drop pendulum, 29cms high.
£70-100

562



563
A late 19th Century mahogany quarter-chiming bracket clock, with silvered arabic dial, the two-train movement by Lenzkirch, striking on a gong, the architectural case with brass carrying handle and brass bracket feet, 42cms with handle raised.
£100-180

563



564

564
A Victorian walnut mantel clock, with enamelled arabic dial, fitted two-train French movement striking on the hour and half-hour, the domed case with brass handle and feet, 32cms with handle raised.
£70-110



565

565
A late 19th Century French inlaid rosewood mantel clock, the enamelled roman dial fitted two-train movement by S. Marti, the backplate also signed 'Vargues A Paris', the case with gilt bezel and decorative floral inlay, stepped base, 16 x 21cms high.
£100-150



566

566
A late 19th Century repeating carriage clock, by Klaftenberger, 157 Regent Street & Paris, the white enamel roman dial fitted and repeater movement with platform lever escapement, striking on a coil gong, serial no.13286 stamped to back and base, in gorge case, 7.5 x 8.0 x 13.5cms high.
£400-600



567

568
Barton: a late 19th Century mahogany wall timepiece, with painted roman dial and single fusee by Winterhalder & Hofmeier movement, stencilled number 10434, with pendulum, 57cms diameter.
£100-150

567
Hamilton Crichton & Co, Paris: an early 20th Century gilt brass cased carriage clock, the white enamel roman dial fitted a movement with platform lever escapement, on velvet-lined wooden base and under glass dome, the clock 13cms high, 24cms overall.
£50-100



568

569
Cortil, Burton: a 19th Century mahogany and herringbone banded stick barometer, with silvered register and architectural pediment, turned reservoir cover with mother-of-pearl embossed 1862, 98cms high.
£120-180



569

Furnishings

570

Giovanni De Martino (1870-1935): a bronze bust of a boy wearing a soft brimmed hat, signed, on green marble plinth, 14cms high.

£80-120

571

Isidore Jules Bonheur (1827-1901): a bronze model of a bull, standing on all fours, on naturalistic base, signed, 13cms long.

£200-300

572

After Pietro Tacca (1577-1640): a bronze model of the Uffizi Boar 'Il Porcellino', a reclining boar raised on its front legs, unsigned, 20th Century, 30cms long, 20cms high.

£100-200

573

David Cemmick (1955-): a bronze grouse, limited edition 10/12, signed, dated '06, and swallow pattern foundry mark, 26cms high.

£200-300

574

David Cemmick (1955-): a bronze pheasant in flight on branch base, limited edition 7/24, signed and dated '05, on black marble plinth, 17cms high.

£100-200



570



571



572



573



574



575

575
Artist unknown: a bronze bear climbing a tree stump, indistinctly signed, on black painted wooden plinth, 13cms high.
£50-100



576

576
After Dr. François Carlo Antommarchi or Dr. Francis Burton: a bronze cast of Napoleon Bonaparte's death mask, mid 19th Century, by the foundry Richard Eck Durand Fils, on velvet-mounted cushion and gilt frame, mask 9cms high, frame 18 x 13cms.
 Note: Richard Eck Durand Fils (casting company in Paris, active 1838-1844).
£300-500



577

577
After Frederic Remington: a bronze cowboy on horseback, on naturalistic base, signed, 34cms long, 30cms high.
£100-150



578

578
Artist unknown: a bronze bear, 20th Century, standing on all fours and growling, 36cms long.
£100-150

579

After Pierre-Jules Mêne: a bronze bear, 20th Century, with one paw raised and snarling, on rocky base, inscribed 'PJ Mêne', 39cms long, 35cms high.
£150-250



579

580

After Pierre-Jules Mêne: a bronze group of cow and bull, 20th Century, meeting at a fence, on naturalistic base, inscribed 'Mêne', on a black marble plinth, 51cms long, 29cms high.
£150-250



580

581

A mid 18th Century serpentine front swing framed toilet mirror, fitted three drawers to the base, on bracket feet, 41 x 21 x 60cms high.
£40-60



581

582

A pair of late 19th Century Grecian Revival parcel-gilt bronze and marble garniture urns, of shallow campana form, raised on a socle base, 25.5cms.
£300-400



582



583

583

An oak bible box, late 17th Century and later, the hinged sloping top opening to reveal an interior with two drawers, carved lunette detail to front with initials 'M.H.' dated 1698, 48 x 34 x 28cms.
£60-100



584

584

A 19th Century Anglo Indian ivory jewellery box, decorated with swags and leaf design, opening to reveal a cushioned lid interior, 29 x 23 x 10cms.
£100-200



585

585

A 19th Century Chinese lacquered work box, of canted rectangular form, decorated in gilt with figures in a landscape with foliate scrolls and fish, the cover flanked by carrying handles and opening to reveal a lift-out tray with fitted compartment, with carved ivory items including pots, needle holders, table mounted pin cushion, bobbins and needles, and underlying drawer with hinged writing slope, 36 x 27 x 16cms high.
£150-250



586

586

A 19th Century vizagapatam ivory work box, of sarcophagus form, the lid flanked by handles opening to reveal mirror panel to interior and compartment enclosing bobbins, spools, needles, needle cases and other items, and an underlying drawer below, 44 x 28 x 18cms high.
£200-400

587

Two early 19th Century tea caddies, each of sarcophagus form, brass handles, and interior lids, one with turned wooden bun feet, the other brass ball feet, each 21cms wide.
£100-200



587



588

588
Robert 'Mouseman' Thompson's Craftsmen Ltd, Kilburn: a pair of oak bookends, 15cms high, 9.5cms wide; and an ashtray, 10cms long, adzed and with carved mouse signatures. (2)
£200-300



589

589
Robert 'Mouseman' Thompson's Craftsmen Ltd, Kilburn: an oak and wrought iron candelabra, the four shaped arms with five sconces on an adzed column with carved mouse signature, 46cms high.
Note: purchased from Robert Thompson's Craftsmen Ltd Kilburn, York in 2014.
£300-500



590

590
A Continental carved wood, polychrome and gilt sculpture of St Peter, possibly 17th Century, decorated in the round with the saint holding the key to the pearly gates, on later oak plinth, 52cms high.
£150-200

591
A mid 19th Century rosewood pole screen, the painted and carved rectangular panel featuring an Arabian scene with two merchants bartering, the shaped reeded stem on carved flowerhead base with lappet feet, 39 x 148cms high.
£80-120



591



592

592
A taxidermy diorama of birds of paradise, 19th Century, the nine birds on branches, under glass dome, 55cms high.
£150-250

593
A fine and rare example of a taxidermy Chillingham bull, on oak shield with ivory plaque inscribed 'Shot by Sir John Christopher Willoughby, Octr 6th 1878, at Chillingham Castle', 53 x 67 x 100cms.

Note: The Wild Cattle of Chillingham are remarkable survivors of the ancient cattle which once roamed Britain's forests.

Sir John Christopher Willoughby, 5th Baronet DSO (20 February 1859 – 16 April 1918) was a British army officer, Justice of the Peace for Oxfordshire, and landowner of properties in Oxfordshire and Buckinghamshire. After education at Eton and Trinity College, Cambridge, John Christopher Willoughby became in 1879 a lieutenant in the 3rd Battalion Oxford Light Infantry. He became a 2nd lieutenant in the 6th Dragoon Guards and entered the Royal Horse Guards in 1880. He served in the Egyptian campaign in 1882 (awarded medal with clasp, and bronze star), in the Nile expedition in 1884–1885 (mentioned in despatches), and with the British South Africa Company's Force in Matabeleland in 1893. In South Africa in the Second Boer War from 1899 to 1900, he was present with Cavalry Headquarter Staff during the siege of Ladysmith and at the relief of Mafeking was appointed major, under General Hunter, in charge of Transport of Flying Column (mentioned in despatches and awarded a medal). Willoughby served in World War I from 1914 to 1917 and was awarded DSO in 1917. He was ultimately major in command of the 1st Motor Battery of the Army Service Corps before his death aged 59 in April 1918. He was buried in Kensal Green Cemetery, London.

£2,000-3,000



593

594

A Penny Farthing bicycle, with a black painted frame, the leather seat marked Lycett Lavenir, wooden handles, metal pedals, the large wheel 130cms.

£1,000-1,500



594

595

A 19th Century German hide-covered rocking horse, with leather bridle and saddle, on pitch pine rocking base; together with a framed photograph of a mother and child and aforementioned horse, outside a terraced house titled 'Tyne View', the photograph by Northern Photographic Co., the horse dimensions 123 x 53 x 103cms high, the photograph and frame 57 x 70cms.

£400-600



595

596

An Arts & Crafts copper two-handed coal bucket, late 19th Century, with engraved shield, initials and date, 46 x 35cms high.
£50-100



596



597

597

An Arts & Crafts copper coal bucket, late 19th Century, the wrought iron black painted handle of shaped form on a hammered bucket with spade-shaped design, 30 x 26 x 40cms.
£50-100



598

598

A Victorian ebonised mahogany four division canterbury, circa 1860, with melon fluted terminals, fitted with a single drawer, turned feet and ceramic castors, lined in gilding, 58cms x 50cms x 55cms.
£180-220

599

No Lot

Furniture

600

A Victorian rosewood card table, the rounded rectangular hinged swivel top opening to reveal a red baize lined playing surface, on octagonal and lappet carved stem, concave sided platform base with scroll feet and castors, 92 x 45 x 75cms.

£80-140

601

A 19th Century Continental mahogany chest, with banded and woven top above six drawers, each with circular urn pattern stamped ring handles and lock escutcheons, fluted canted sides on squat square tapered legs, 89 x 43 x 146cms.

£200-300

602

A George III mahogany chest, the rectangular moulded top above four long graduated drawers with brass handles, raised on bracket feet, 95 x 46 x 91cms high.

£200-300



600



601



602



603

603
Robert 'Mouseman' Thompson of Kilburn: a mid Century oak sideboard, with shaped back and adzed rectangular top above a central arrangement of two short over three long drawers, with wrought iron drop handles, flanked by a pair of cupboard doors with strapwork catches, with high relief trademark mouse to lower left canted angle, raised on octagonal feet, 93.5 x 152.5 x 47cms.
£2,000-3,000



604

604
A large and ornate late 19th Century Flemish carved armoire, the upper section with ogee cornice, above a frieze decorated with hunting scenes, dragons and scrolls, above a pair of panelled cupboards and figural uprights depicting women and children, the lower section with single long drawer decorated with cherubs and fruiting vine, above a large pair of cupboard doors with carved lunettes and foliate design, two carved short drawers to base, canted sides, on fluted bun feet, 160 x 66 x 213cms high.
£400-600

605

A set of six Regency mahogany dining chairs, broad fluted curved bar top rails, carved horizontal splats with centre tablets, drop-in seats raised on sabre legs (includes two armchairs).
£150-250



605



606

606

A George III style mahogany D-end twin pedestal dining table, with two spare leaves, on turned and fluted column stems and fluted legs with brass caps and castors, 152 x 246 (with leaves inserted) x 106 x 72cms wide.
£200-300



607

607

A Victorian mahogany tea table, the hinged swivel top raised on splayed and canted rectangular column with carved leaf base collar, concave side of platform on scroll feet with castors, 92 x 45 x 76cms.
£70-110



608

608
A set of twelve 19th Century mahogany dining chairs, with pierced splats decorated with wheatear design, carved floral uprights, cupids bow top rails, drop-in seats raised on moulded and chamfered square legs connected by stretchers (includes two carvers with carved scrollwork arms).
£300-500

609
A French kingwood and metal mounted bijouterie table, late 19th Century, the hinged serpentine top inset bevelled glass panel opening to reveal a velvet-lined interior, glass sides, on slender gilt metal mounted legs, 58 x 42 x 73.5cms high.
£200-300

610
A late George III inlaid mahogany cellarette, octagonal with hinged cover opening to reveal a partially fitted interior, raised on square tapered legs with brass caps and castors 60 x 44 x 65cms high.
£60-100

611
An attractive Edwardian inlaid mahogany kidney-shaped work/side table, the plum pudding and banded top decorated with ribbon tied flowers, above a fiddle back mahogany drawer decorated swag design, slender tapering legs with bellflower designs, connected by an inlaid undertier, 57 x 40 x 76cms high.
£150-250



609



610



611



612

612
A substantial mahogany extending dining table, late 19th/early 20th Century, the rounded rectangular top raised on cabriole legs with pad feet and castors, with two spare leaves, 180 (260 with leaves inserted) x 120 x 77cms high.
£150-250

613
A French Louis XV provincial walnut bureau, the shaped and banded writing slope opening to reveal a fitted interior of drawers and recesses, tooled leather writing surface, two short and one long drawer, raised on slender tapering splayed legs with gilt metal mounts, 96 x 46 x 105cms high.
£150-250

614
A Dutch marquetry bedside table, the rectangular gallery top centred with inlaid vase of flowers, above a tambour slide and single long drawer, raised on square tapering legs, 49 x 33 x 66cms high.
£80-140

615
A Georgian-style mahogany kneehole desk, the rounded rectangular moulded top above a single long drawer and six short drawers, around a recessed central cupboard, on bracket feet terminating in castors, 99.5 x 52 x 61cms high.
£100-200



613



614



615



616

616
A Victorian rosewood balloon-back harpists chair, with spindle splat, needlework seat, raised on fluted tapering and leaf carved stem, concave sided platform base with turned feet, 74cms.
£150-250



617

617
An Edwardian inlaid mahogany work table, the arched hinged double-flap top opening to reveal a fitted interior, raised on square tapering legs connecting by a shaped stretcher, spade feet, 48 x 31 x 78cms high.
£100-200

618
A George III mahogany chest-on-chest, the upper section with dentil cornice above three short and three long graduated drawers, fluted canted sides, the lower section with three further long drawers, on bracket feet, 105 x 54 x 177cms high.
£250-450



618



619

619

Robson & Sons: a mahogany breakfront serving table, c.1900, the moulded top above central drawer with carved swag design, flanked by fluted frieze, on large acanthus leaf carved cabriole legs with claw and ball feet, 151 x 55 x 92cms high.

£200-400

620

A Victorian inlaid burr walnut graduated whatnot, with shaped rectangular shelves and spirally fluted supports, on turned feet, 50 x 33 x 132cms high.

£70-110

621

A 17th Century and later oak side table, the plank top above single long geometric decorated drawer, raised on turned legs connected by peripheral stretchers, 91 x 53 x 74cms.

£150-250

622

An 18th Century walnut cabinet on associated chest, with ogee cornice above a cushion drawer, a pair of panel doors below opening to reveal a fitted interior of ten drawers around the cupboard opening to a further four recessed short drawers, the lower section with four long graduated drawers on bracket feet, 120 x 50 x 193cms.

£200-400



620



621



622



623

623
An 18th Century painted corner cupboard, with a pair of panelled doors decorated with a court scene, opening to reveal painted shelved interior, 58 x 39 x 93cms.
£100-200



624

624
A George III mahogany chest on chest, the upper section with dentil frieze above two short and three long drawers flanked by fluted canted sides, the lower section with three long drawers, on bracket feet, 116 x 59 x 186cms.
£200-300



625

625
Edwards & Roberts: a Victorian burr walnut serpentine front three-tier whatnot, with pierced fretwork three-quarter gallery to top tier, on spirally fluted supports, the lower tier with single drawer stamped maker's mark, on fluted melon and turned feet terminating in castors, 59 x 38 x 111cms high.
£200-300



626

626
A six piece Victorian carved and pierced walnut
salon suite, comprising lady's and gentleman's
 easy chair and four side chairs, each with
 decorative pierced and carved backs. breakfront
 seat rails and squat turned legs, the lady's and
 gentleman's easy chair with button upholstered
 backs and white ceramic castors. (6)
£200-300



627

627
A Victorian burr walnut graduated four-tier
whatnot, 64 x 43 x 139cms.
£100-150



628

628
A mahogany D end dining table, 19th Century
 with later restoration, comprising a rectangular
 drop-leaf central section and two D ends, each
 with double-line boxwood inlay to border, raised
 on chamfered square tapering legs, with brass
 clips, with single spare leaf, approx. 298 (fully
 extended) x 122 x 71cms high.
£150-200



629

629
Eight late Georgian mahogany dining chairs,
 each with drawered curved top rails and horizontal
 splats, drop-in seats on sabre legs, includes two
 armchairs (one chair with slightly narrower top
 rail); and two similar dining chairs with scroll over
 top rails. (10)
£150-250



630

630

A Victorian mahogany extending dining table, the rounded rectangular top with two spare leaves, raised on inverted baluster legs with Cope & Collinson patent castors, 166 (274 extended) x 138 x 74cms high.

£200-400



631

631

A Victorian mahogany tilt-action dining table, the circular top with broad outer banding, raised on circular tapered stem and triform base, with carved fluted roundels terminating in brass castors, 128 (diameter) x 71cms high.

£100-200



632

632

A Victorian mahogany marble top serving table, with single long fitted drawer to frieze, raised on substantial acanthus carved and scrollwork legs, 123 x 51 x 79cms high.

£200-400



633

633

An early 18th Century walnut and banded kneehole desk/dressing table, the rectangular moulded top above a single long drawer and six short drawers, around a recessed cupboard, on bracket feet, 87 x 46 x 77cms high.

£500-800

634

William Crawhall: an unusual mid 19th Century carved oak armchair, the high panelled back profusely carved with flowerheads and scrollwork with central mask to top rail and inscribed centrally 'By W Crawhall, 18*9', carved arms above drop-in seat, carved panel front and sides

NB: William Crawhall was a nephew of Joseph Crawhall, who worked for Thomas H Tweedy, Grainger Street, Newcastle upon Tyne, wood carver and gilder.

£200-300

635

A George III mahogany and banded bureau cabinet, the upper section with cavetto cornice, above a pair of panel doors enclosing adjustable shelves, with candle slides, the lower section with rectangular writing slope enclosing a fitted interior of drawers and pigeon holes around a central cupboard, two short and two long drawers below on bracket feet, 93 x 53 x 215cms high.

£150-250

636

An 18th Century oak side table, the rectangular top raised on turned legs and peripheral stretchers, with restorations, 95 x 55 x 72cms.

£70-110



636



634



635



637

637
A George III mahogany and satinwood banded secretaire chest, the rectangular top above single secretaire drawer, opening to reveal a fitted interior of pigeon holes and drawers, three long graduated drawers below on splayed bracket feet, 91 x 49 x 104cms high.
£100-150



638

639
A William and Mary style walnut and herringbone strung bureau, of small size, the rectangular writing slope opening to reveal a fitted interior of pigeon holes and drawers around a central cupboard, two short drawers below, raised on turned tapering legs connected by shaped stretchers, on bun feet, 56 x 38 x 94cms.
£200-300



639

640
A George III mahogany and satinwood banded jardiniere stand, with square pierced gallery top on square supports, the central tier with single drawer, carved corner brackets below, 32 (square) x 86cms high.
£80-120

638
A Georgian oak tripod table, detachable top on baluster stem, downswept legs with pad feet, 74 x 63cms.
£40-60

641
A Georgian oak tripod table, the circular top raised on slender baluster stem and downswept legs with pad feet, 47 x 70cms high.
£40-60



640



641



642

642
A Victorian mahogany work/occasional table, the rectangular moulded top above single frieze drawer with fitted interior and slender baluster column and four downswept feet, stamped 6665 to underside, 61 x 46 x 74cms.
£80-120



643

643
An oak joint stool, probably 17th Century, rectangular seat raised on turned legs with peripheral stretchers, 46 x 28 x 52cms high.
£150-250



644
An oak joint stool, probably 17th Century, the square top on turned legs with peripheral stretchers, 35.5 x 32.5 x 33cms.
£70-110

645
A George III oak low dresser, the rectangular plant top above three short drawers with brass swan neck handles, shaped apron, cabriole legs with pad feet, 195 x 44 x 81cms.
£300-500

644



645



646

646

A substantial oak gateleg table, 18th Century (with restoration), the oval double-flap top raised on turned legs with channelled rectangular section peripheral stretchers, on turned feet, 182 (opened) x 150 x 72cms high.

£150-250

647

A George III fruitwood full height corner cabinet, the upper section with ogee cornice above a pair of panelled doors enclosing shelved interior, the lower section with single panelled door enclosing a single shelf interior, plinth base, 97 x 53 x 196cms high.

£150-250



647

648

A 19th Century oak chest of drawers, the rectangular top above two short and three long drawers, on later bun feet, 94 x 57 x 88cms high.

£100-150

649

A Provincial oak cupboard, with 18th Century elements, the upper section with ogee cornice above a pair of turned baluster spindles, two panel doors enclosing single shelf, the lower section with two short drawers and a pair of panel doors, also enclosing a single shelf interior, on block feet, 84 x 51 x 176cms high.

£150-250



648



649



650

650

An early 18th Century oak chest, of small proportions, the rectangular moulded top above three long graduated drawers, on bracket feet, 79 x 34 x 77cms high.

£150-250



651

651

A 19th Century Irish two-sectioned mahogany campaign chest by Ross & Co, Dublin, the upper section with four drawers and one long drawer, the lower section with two long drawers, with maker's label to one short drawer, 99 x 48 x 102cms.

£400-600

652

A substantial 18th Century oak gateleg table, the oval double-flap top raised on turned legs, rectangular section peripheral stretchers, on splayed unusual shaped pad feet, 164 (opened) x 158 x 70cms high.

£200-300



652



653

653
Sopwith: a Victorian ash dressing table, in the aesthetic taste, with single drawer, X-frame supports connected by turned stretcher, stencilled 'Sopwith 1513'; 104 x 52 x 74cms high; together with a matching marble top washstand, with bamboo style towel rail, stencilled 'Sopwith 1512'; 104 x 54 x 83cms high.
£200-300

654
A Georgian-style inlaid mahogany side table, the rectangular satinwood banded top above a decorative frieze inlaid with ribbon tied floral sprigs, raised on shaped hexagonal legs, connected by shaped stretchers on hexagonal pad feet, 160 x 41.5 x 94cms high.
£200-300



654

655
An ornate French Empire-style bedroom suite, comprising: a large three-door wardrobe, with Greek key frieze and decorative oval panel, 150 x 62 x 217cms high; a dressing table, with bevelled mirror panelled back and marble top above two drawers, cupboards below, 122 x 50 x 164cms high; a pair of bedside cabinets, 45 x 42 x 82cms high; and a bed, 157 x 208cms.
£300-500

656-657
 No Lots



655

Car at 1.30pm



658

658

Black Porsche Boxster S 'Black Edition' 3.4s, two-door, Reg RV11 GCY, 2011, petrol automatic, mileage approximately 23,000, MOT expires 23rd February, 2023, untaxed.

We ask that all potential new bidders wishing to bid on a vehicle, please be aware that prior to the sale they will need to provide full ID in the form of a driving licence/passport and a copy of a utility bill.

Buyer's premium is 10% (12% incl VAT) on the hammer price.

Agents buying on behalf of a third party must have written authority from their principal clearly stating their authorisation to bid.

We will also require a 10% deposit of the lower estimate at the time of registering, which can be made during the viewing period. If unsuccessful, then we will issue a refund immediately.

There will be no internet bidding on vehicles.

£20,000-25,000

Vintage Wine, Whisky & Champagne

659

Lagavulin Aged 16 Years Single Islay Malt Whisky, (1 Litre), 43% vol, 1 bottle, Berry Bros & Rudd neck label.
£250-350



659

660

Miniature Whisky: The Macallan, 10 years old, 1972, boxed; and The Macallan, 10 years old, 1970. (2)
£70-100



660

661

Miniature Whisky: Connoisseurs Choice Dallas Dhu 1974 and Kinclaith 1966, Scapa 1984, Imperial 1979 and Glenlossie 1968, retailed by Gordon & Macphail, boxed; two Knockando 1975 and 1979, boxed; The Singleton 1983; Ardbeg 1975, boxed; Sailing Ships series no.1, 15years old, no.522/1200, boxed. (10)
£100-200



661

662

Miniature Whisky: Isle of Skye no.45; two Prestonfield House, one 16 years old vintage 1972, cask 1036-1039 no.7888, the other 10 years old; The Edradour, 10 years old; two Oban, 10 and 14 years old; The Balvenie 15 years old, Macphail's 24 years old; a White Horse tiny miniature; and various others. (34)
£100-150



662

663

A selection of whisky, comprising: Glen Ord single malt, 12 years old, boxed; The Gordon Highlanders Bicentenary bottle; Canadian Club Classic, 12 years old, boxed; Ballantine's blended scotch; and a presentation set of miniatures.

£50-100



663

664

A selection of whisky, comprising: two bottles Glenmorangie Original single malt, in presentation cases with Craftsman's cups or glasses; a bottle of Six Isles Reserve blended whisky, boxed; a bottle of Glenfiddich 18 years old, in a presentation case with two glasses; a bottle of Chivas Regal 12 years old, boxed; and a bottle of Monkey Shoulder batch 27. (7)

£150-250



664

665

A bottle of Lagavulin Islay single malt Scotch Whisky, 16 years old, boxed.

£150-250

666

A bottle of The Macallan Gold, matured in Sherry Oak Casks, 700ml 40% vol, boxed.

£40-60

667

A bottle of Bollinger Vintage Champagne, 1973, boxed; and a bottle of Krug Vintage Champagne, 1971, (lower shoulder). (2)

£150-250



665



666



667

668
Four bottles of Taylor's Vintage Port, 1985, 75l
 20.5% vol.
 £100-150



668

669
A selection of whisky, comprising: Inchmurrin 20 years old, retailed by Master of Malt, boxed; The Balvenie Double Wood, 12 years old, boxed; Port Charlotte Hotel 11 years old, Bourbon Cask no.1129; Bowmore 12 years old, boxed; Caol Ila 12 years old, Clynelish 14 years old, and Talisker 10 years old, in The Classic Malts Coastal Collection case.
 £100-200



669

670
A selection of port and liqueur, comprising: Taylor Vintage Port 1970; Cockburn's Special Reserve port bi-centenary; Fonseca Vintage Port, 1998; Grahams Vintage Port, 1970; Warre's Vintage Port, 1977; and The Grand Marnier Liqueur. (6)
 £70-100

671
A bottle of Da Silva Vintage Port, 1947, Qunito Do Noval, with Robert Hart Wine Merchant, Warwick label.
 £80-120



670

671



672

672

A bottle of Verdelho Solera Madeira, 1814, some losses of wax seal, level mid-neck.

Note: 1814 was their first year of establishment.

£200-300



673

673

A bottle of The Macallan, Single Highland Malt Scotch Whisky, 10 years old, 70cl, 40% vol, boxed.

£300-500



675

674

Seven bottles of whisky, comprising: The Glenlivet, 12 years old; The Glenlivet founder's reserve, boxed; Old Fettercairn, 10 years old, boxed; Glenmorangie, 10 years old, boxed; Aberlour, 10 years old, boxed; Glenfiddich, Special Old Reserve, boxed, x2.

£100-200

675

A bottle of Chateau Margaux, 1943 1er grand cru classe.

£100-200



674

676
A bottle of Chateau Voigny, Preignac Sauternes,
 1943.
£40-60

677
A bottle of The Glenlivet Special Jubilee
Reserve, aged 25 years, no.192, 750ml, 75 proof,
 in presentation box
£300-500

678
A bottle of Barbera d'Alba double magnum,
 1993, 3 litre 12% vol.
£50-100

679
 No Lot



676



677



678

Books

680

Park (Mungo) Travels In The Interior Of Africa, 8vo, half-calf, marbled boards; **Burnaby (Fred) A Ride to Khiva**, 8vo, gilt-cloth, illus. with maps, 1878; **Phelps (Elizabeth S.) The Gates Ajar**, 8vo, gilt-cloth, illus., 1868; and **Reitlinger (Gerald) A Tower of Skulls: Journey Through Persia & Turkish Armenia**, 8vo, cloth, illus. 1932. (4)
£45-65



680

681

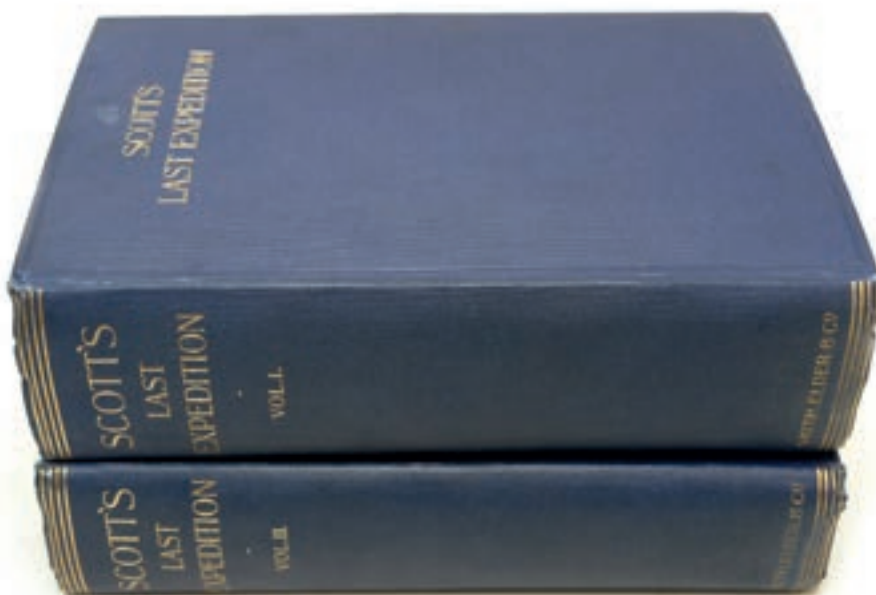
Wright (William) The Empire of the Hittites, 8vo, gilt-calf, illus., second edition, 1886; **Handley-Taylor (Geoffrey) Bibliography of Iran**, 8vo, cloth, illus., 1969; and **Browne (E.G.) A Year Among The Persians**, 8vo, cloth, illus., Cambridge 1927, with d.w. (3)
£70-110



681

682

Scott (Captain Robert Falcon) (ed. by Leonard Huxley) Scott's Last Expedition, 2 vols, lge. 8vo, cloth, illus., first edition 1913.
£800-1,200

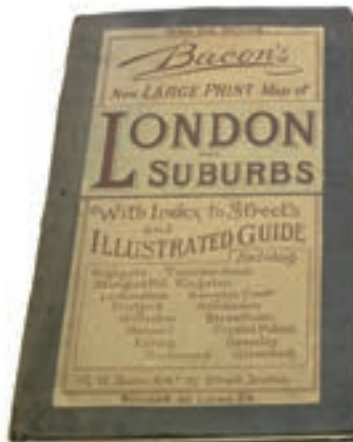


682



683

683
Ordnance Survey 1:2500 scale map sheets, covering Bywell, St. Andrews Parish Corbridge, and Ovingham in Northumberland, linen-backed in lge. half-calf bindings.
£100-200



684



684
Cary (John) Traveller's Companion Or A Delineation of the Roads of England & Wales, 16mo, calf, comprising 1 general and 42 county hand-coloured maps, 1806; and **Bacon's New Large Print Map of London and Suburbs**, on linen, in printed boards.
£80-120

685
Tunison (H.C.) (pub.) Tunison's Peerless Universal Atlas of the World, lge. 4to, original boards, illus. with maps, text and plates, Jacksonville, Illinois 1891.
£100-150



685

686
The Ordnance Survey: an Atlas of England & Wales, lge. ob. 4to, cloth, illus. with 1/4"-1 mile, linen-backed maps printed in colour, 1922; **O'Donoghue (Yolande) and Harley (J.D.) The Old Series Ordnance Survey Maps of England & Wales**, 3 vols, folio, cloth, illus. with facsimile maps, 1975, with d.w.s; and a reproduction of **John Ogilby's Britannia**, ob. folio, cloth, illus. 1939.
£100-150

687
Virtue & Co., The National Gazetteer: Topographical Dictionary of the British Isles, 3 vols, lge. 8vo, half-calf, illus. with maps, 1868.
£70-110



686



687



688

688

Grey (The Hon. & Rev. Francis Richard) (b.1813-d.1890) Voyage of the Abbess of S. Hilda from Whitby to Holy Island (from Marmion canto II 1 & 8), a collection of 13 small grisaille wash drawings illustrating the verses of Sir Walter Scott, with manuscript text and title page, all contained in an oblong folio, gilt-morocco binding, the preliminary page bearing an inscription in pencil "While the Patient Sketch Ever harder" and "Given me by Lady Georgina Grey, 1890".

£200-300



689

689

J.G. Pringles Stores Ltd, High Street, Easington Lane, Co. Durham (purveyors of Groceries & Provisions, Drapery & Boots): **an archive of cash books and other ledgers**, dating from October 1st 1924 - April 30th 1968, comprising: Cash Books vols. 1-16, Petty Cash Books vols. 1 and 2, Purchase Journal vol. 1, Transfer Journal No. 1, Private Journal No. 1, and Private Ledger No. 1; together with another Cash Book, two Salary Ledgers and a Petty Cash book, possibly relating to another business; and an empty ledger titled Fire Brick Works Cash Book No. 4.

£100-180



690

690

Mackenzie (E.) and Ross (M.) View of the County Palatine of Durham, 2 vols, 4to, half-calf and marbled boards, illus., Newcastle 1834.

£40-80



691

691

The Penny Illustrated Paper and Illustrated Times, vol. 63, July 2nd 1892-December 31 1892, in half-calf folio bindings.

£40-60



692

692

A small quantity of paper ephemera: documents, prints, press cuttings, etc., relating to Newcastle, Northumberland and Durham, in two albums and a box file.

£40-60



693

693

The Newcastle Chronicle, vol. 12, Saturday, January 31st 1789-September 11th 1790, in plain cloth binding.

£50-90



694

694

A collection of antique and vintage newspapers, including: The Alston Herald and East Cumberland Advertiser, Saturday, September 25th 1875, The Times Empire Day edition, May 24th 1913, The Daily Telegraph Coronation Picture Supplement, May 13th 1937, The Daily Express Victory In The Falklands, June 15th 1982, The Sunday Times Churchill Memorial Issue, Newcastle Evening Chronicle Moon Landing Souvenir, etc.
£30-50

695

University of Newcastle upon Tyne School of Education Local History Archive Teaching Units: "Coals from Newcastle", "Travel in the Turnpike Age", "Railways in the Making", "The Tyne", 1968-1977, printed ephemera and pamphlets in a set of twelve printed folders.
£50-80

696

Ledgers containing sinking and boring records for various collieries in Northumberland and Durham, recorded in manuscript and illustrated with hand-drawn plans, folio, early to mid 20th Century.
£100-180

697

Whitaker (Harold) A Descriptive List of the Maps of Northumberland 1576-1900, 4to, printed cloth, illus., Newcastle 1949; Walker's Pocket Map of Northumberland, on linen, in folding protective boards; and The Scarborough Company Folding Map of Northumberland & Durham, on linen, in protective printed boards. (3)
£50-80

698

Bewick (Thomas) and Boyd (Julia) (Editor) Bewick Gleanings: impressions from copperplates and wood blocks in the Bewick Workshop, 4to, modern half-calf and marbled boards, illus., printed and published by Andrew Reid, Newcastle 1886, limited large paper edition individually numbered and signed by Julia Boyd. This copy, No. 155, was purchased at auction in 2015 as a collection of loose sheets and brought together in this binding. Also included are the separate price sheets issued by Reids, and the pamphlet by Julia Boyd in response to an unfavourable reviewer.
£400-600



695



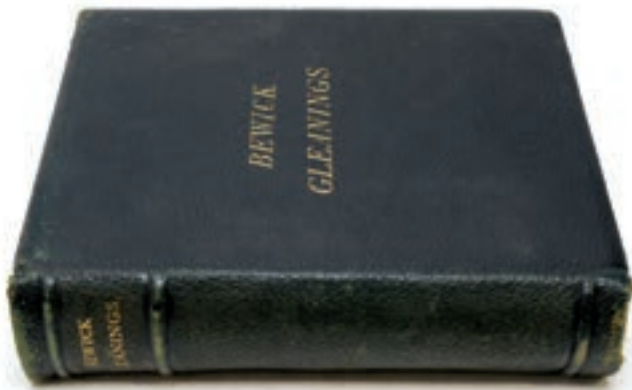
696



697



698



699

699
Bewick (Thomas) and Boyd (Julia) (Editor) Bewick Gleanings: impressions from copperplates and wood blocks in the Bewick Workshop, 4to, full-morocco, illus., printed and published by Andrew Reid, Newcastle 1886, limited small paper edition individually numbered and signed by Julia Boyd.
£200-350



700

700
Bewick (Thomas) A History of British Birds: Land Birds and Water Birds, 2 vols, 8vo, full-calf, illus. with wood engravings by the Author, Newcastle 1826.
£60-100



701

701
Roscoe (S.) Thomas Bewick A Bibliography Raisonné, 8vo, cloth, illus., 1973; **Anderton (Basil) Thomas Bewick The Tyneside Engraver**, 8vo, printed boards, illus., 1916; **Tattersfield (Nigel) John Bewick: Engraver On Wood 1760-1795**, 8vo, cloth, illus., 2001; **Tattersfield (Nigel) Bookplates By Beilby & Bewick**, 8vo, cloth, illus., 1999; and other books and pamphlets on Thomas Bewick. (8)
£50-80



702

702
Hodgson (the Rev. J.) and Laird (F.C.), The Beauties of England and Wales, volume twelve part one, Northumberland and Nottinghamshire, two volumes in one, 8vo, half calf with marbled boards; and **Pigot's Northumberland**, illus with hand-coloured map, engraved plate and distance table, small 8vo, half calf, 1842.
£40-60



703

703
Hodges (C.C.) The Abbey of St. Andrew, Hexham, large folio, half-morocco and printed gilt cloth, illus, first edition privately printed by the Author 1888.
£200-400



704

704
Trower (Alison) Hexham: Gateway to the North - a series of prints, lge folio, Hexham 1988.
£20-40



705

705
Scott (Walter) The Border Antiquities of England and Scotland, 4to, full gilt-calf, illus with engravings, 1814.
£150-250



706

706
De Fonblanque (Edward Barrington) Annals Of The House Of Percy, 2 vols, 8vo, gilt-vellum, illus. with plates and large fold-out linen-backed genealogical chart within a wallet inside rear cover.
£200-300



707

707
Brenan (Gerald) A History Of The House Of Percy, 2 vols, 8vo, gilt-cloth, illus. 1902; and Percy (Henry Algernon, 5th Earl of Northumberland) The Regulations & Establishments Of The Household Of The Earl of Northumberland, original boards, third edition, 1905.
£50-75



708

708
Richardson (M.A.) The Local Historian's Table Book..., Connected with the Counties of Newcastle upon Tyne, Northumberland & Durham, Historical Division, Vols. 1-5, and Legendary Division, Vols. 1-3, in uniform 8vo, half-calf and marbled boards, illus., Newcastle 1841-1846. (8)
£40-60



709

709
Morton (The Rev. James) The Monastic Annals of Teviotvale, 4to, half-calf and marbled boards, illus. with 19 plates, Edinburgh 1832, bearing the bookplate of Sir George Douglas Barr; and White (Robert) A History of the Battle of Otterburn, 1388, 8vo, quarter-morocco, illus. with vignettes and fold-out map, published by Emerson Charnley, Newcastle upon Tyne 1857.
£80-120



710

710

Stephens (Rev. Thomas) The Register of Baptisms, Marriages & Burials, Solemnized in the Parish of Elsdon, Northumberland, 4to, half-buckram, published by The Society of Antiquaries of Newcastle-upon-Tyne 1903; **Burke (Arthur Meredyth) The Ancient Parish Registers of England & Wales**, 1ge. 8vo, gilt-cloth, illus., 1908; **The Publications of the Surtees Society Vol. 131: Northumbrian Documents**, 8vo, original boards, 1918; and **Martin (K.A.) and Wood (Herbert M.) The Registers of Eglingham, Northumberland**, 8vo, cloth, Sunderland 1899.

£40-60



711

711

Hedley (W. Percy) Northumberland Families, 2 vols, 1ge. 4to, cloth, illus. with genealogical charts, Newcastle 1968 and 1970 the latter with d.w.; **Mawer (Allen) The Place-Names of Northumberland & Durham**, 8vo, half-calf, Cambridge University Press 1920; and **Pedigree & Memoirs of the Family of Loraine of Kirkharle**, 4to, quarter-calf and printed boards, published for private circulation 1902, bearing the bookplate of Bryan William James Hall.

£45-75



712

712

Davison (William, Publisher) Poll Book of the Contested Election for the County of Northumberland 1826, 8vo, half-calf, Alnwick 1827.

£40-70



713

713

Hair (T.H.) Views of the Collieries in the Counties of Northumberland & Durham, folio, cloth, illus., facsimile edition by Davis Books 1987, 2 copies; **Hedley (W. Percy) Northumberland Families**, Vol. 2, 1ge. 4to, cloth, illus. with genealogical tables, Newcastle 1970, with d.w.; **The Monthly Chronicle of North-Country Lore & Legend**, 4 vols. in printed cloth, and 1 vol. in paper covers; and **Richardson (M.A.) The Local Historian's Table Book: Legendary & Historical**, 8 vols, 8vo, half-calf and marbled boards, illus., Newcastle 1841-1846; and three pamphlets on local history.

£50-80



714

714

Heslop (Rev. Oliver) A Glossary of Northumberland Words, and a Biographical List of Works Illustrative of the Dialect of Northumberland, 3 vols. in 1, 8vo, half-morocco, 1892, 1893-1894, and 1896; and **Brockett (John Trotter) and Lambton (John George) A Glossary of North-Country Words**, 8vo, half-calf and marbled boards, Newcastle 1825.

£35-65



715

715

Hutchinson (W.) A View of Northumberland, 2 vols. in 1, 4to, calf, illus. with plates and fold-out engravings, Newcastle 1778; and **Brand (John) History & Antiquities of the Town and County of Newcastle upon Tyne**, vol. 1, 4to, marbled boards, illus., 1789.

£45-65



716

716
Pigot & Co., Directory for Northumberland 1828 and 1834, 2 vols, 8vo, modern cloth re-bindings; and **Pigot's Directory for Northumberland 1822**, facsimile edition, limited to 600 numbered copies, Keenley Press, Allendale, 1978.
£40-60



717

717
Dixon (David Dippie) Upper Coquetdale, Northumberland, 4to, half-morocco, illus. by John Turnbull Dixon, Newcastle 1903; and a modern limited edition re-print of 1000 numbered copies, Sandhill Press, Alnwick 1987.
£45-65



718

718
Dixon (David Dippie) Whittingham Vale, 4to, quarter-calf and original boards, illus. by John Turnbull Dixon, edition deluxe, limited to 200 numbered copies, Newcastle 1895.
£70-110



719

719
Whellan (William) History Topography and Directory of Northumberland, 8vo, half-calf, 1855; **Mackenzie & Dent (Publisher) A History and Descriptive View of Northumberland**, 2 vols, 8vo, calf, illus. with engravings and fold-out map, Newcastle 1811.
£50-80



720

720
Mackenzie & Dent (Publisher) A Historical & Descriptive View of Northumberland, 2 vols, 8vo, calf, illus., Newcastle 1811; and **Parson (William) and White (William) History, Directory & Gazetteer of Durham & Northumberland**, 2 vols, 8vo, calf, 1827 and 1828.
£80-120



721

721
Hodgson (John) A History of Northumberland, 3 vols. in 7, 4to, cloth, illus., Newcastle, differing editions, Part 1 1858, Part 3 1828, etc.
£200-350



722

722

Horsley (John) Britannia Roman: Roman Antiquities of Britain, 3 vols. in 1, folio, full-calf, illus. with plates and maps, printed for John Osborn and Thomas Longman, 1732.
£200-300



723

723

The Northumberland County History Committee History of Northumberland, vols. 1-6, 9 and 14, 4to, cloth, Newcastle 1893-1935.
£100-180



724

724

Davison (William) New Specimen of Cast-Metal Ornaments and Wood Types, Sold by W. Davison, Alnwick, 4to, half-calf, illus. with engravings by Thomas Bewick and other artists (Bewick's illustrations indicated throughout by a capital letter "B" in pencil), Alnwick, n.d., an early, possibly first edition c.1937; and **Isaac (Peter) William Davison's New Specimen of Cast-Metal Ornaments and Wood Types**, 4to, cloth, illus., published by The Printing Historical Society 1990, with d.w. (2)
£400-600



725

725

Charnley (Emerson) Specimens of Early Wood Engraving: Being Impressions of Wood-Cuts from the Collection of Mr. Charnley, Newcastle, 8vo, boards, illus., from an edition of only 20 copies privately printed for Emerson Charnley, Bigg Market, Newcastle-upon-Tyne 1858.
£250-450



726

726

Dodd (William) Specimens of Early Wood Engraving: Being Impressions of Wood-Cuts in the Possession of the Publisher, 4to, cloth, illus., from an edition of only 100 copies printed by William Dodd, Bigg Market, Newcastle-upon-Tyne 1862.
£250-450



727

727

Bewick (Thomas) A Specimen Album of Wood-Cuts, folio, half-morocco, illus., various artists, n.d.; and **Stephens (S.G.) Notes On A Collection of Drawings and Wood-Cuts**, by Thomas Bewick, Exhibited 1880, 4to, gilt-calf, illus. with original wood engravings, published by The Fine Art Society, 1881.
£300-500



728

728
Bewick (Thomas) A General History of Quadrupeds, 8vo, calf, illus. with wood engravings by the Author, first edition, Newcastle upon Tyne 1790; and **Bewick (Thomas) and Bain (Iain) (Editor) My Life**, 8vo, printed boards, illus., The Folio Society 1981, with d.ws. (2)
£80-140



729

729
Richardson (Thomas Miles snr.) Memorials of Old Newcastle upon Tyne, lge. 4to, cloth, illus. with 42 engravings, first edition, Newcastle 1897.
£45-65



730

730
Richardson (Thomas Miles snr.) Memorials of Old Newcastle upon Tyne, lge. 4to, original boards, illus., published by James Garland, Newcastle, n.d.
£30-50



731

731
Richardson (Thomas Miles snr.) Memorials of Old Newcastle upon Tyne, folio, original printed boards, illus. with 40 etchings, published by Thomas Gray and James Garland, Edinburgh and Newcastle 1897.
£50-90



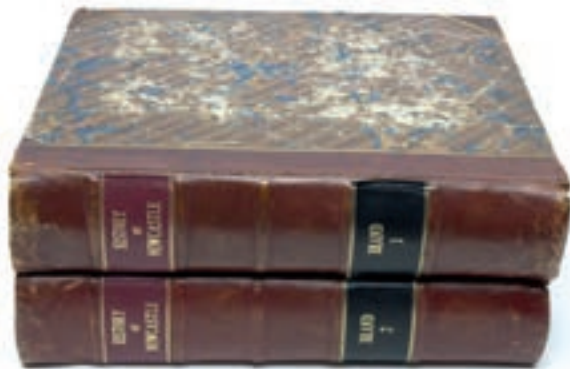
732

732
Walker (James) and Richardson (M.A.) The Armorial Bearings of the Incorporated Companies of Newcastle upon Tyne, illus. with engravings, Newcastle 1824; **The Publications of the Surtees Society**, Vol. 105: Records of the Company of Postmen of Newcastle upon Tyne 1901; and **Publications of The Newcastle upon Tyne Records Committee**, Vol. 1: Newcastle Council Minute Book 1639-1656, 8vo, cloth, 1920.
£45-75



733

733
Gardiner (Ralph) Grievance Discovered in Relation to the Coal Trade, 8vo, half-calf, illus. with fold-out map of the River Tyne and engraved plates, Newcastle 1796; **Hair (T.H.) Views of the Collieries in the County of Northumberland and Durham**, lge. 4to, quarter-morocco, illus., facsimile edition published by Davis Books 1987, in d.s.; another copy of the same book in cloth, with d.w.; **Baldwin (C.E.) The History of the Port of Blyth**, 8vo, cloth, illus., Newcastle 1989; and **Crawford (Ralph) History of the Morpeth Gas Company**, 4to, boards, illus., Newcastle 1933 (bound upside down).
£100-150



734

734
Brand (John) *The History & Antiquities of the Town and County of Newcastle upon Tyne*, 2 vols, 4to, half-calf and marbled boards, illus., 1789.
 £60-100



735

735
Rose (Thomas) *Westmorland, Cumberland, Durham and Northumberland Illustrated*, 3 vols, 4to, original gilt-boards, illus. with engravings by Thomas Allom, George Pickering and others, 1832.
 £70-110



736

736
Boyle (J.R.) *The County of Durham: Its Castles, Churches and Manor-Houses*, 4to, cloth, illus. with plans and maps, 1ge. paper edition limited to 250 numbered copies, 1892.
 £40-60



737

737
Surtees (Robert) *Topographical History of the City and Suburbs of Durham*, with a Memoir of the Author, atlas folio, original boards, illus., 1839; **Fordyce (William)** *A General History of the County of Durham*, 4to, half-calf (missing preliminaries and title page, and other pages detached); and **Lenygon (Francis)** *Decoration In England 1660-1770*, 4to, cloth, illus., n.d. (3)
 £45-75



738

738
Fordyce (William) *The History & Antiquities of the County Palatine of Durham*, 2 vols, 4to, half-morocco, illus., 1857; and **Whellan (Francis)** *A History, Topography & Directory of Durham*, 1ge. 8vo, half-calf, second edition 1894.
 £45-75



739

739
Raine (Rev. James) *The History & Antiquities of North Durham*, folio, boards, illus., 1852, containing a loose mezzotint portrait of the Author.
 £35-65



740

740
The Ordnance Survey: two folios of 6"-1 mile scale maps of Durham,
 edition of 1923.
£80-120



741

741
Return of Owners of Land in England & Wales, Exclusive of the
Metropolis, 1873, in alphabetical order, Bedford-York and Wales, 3 vols. folio,
 printed by Eyre & Spottiswoode for Her Majesty's Stationery Office 1875.
£60-100



742

742
Kelly's Directories of South End 1950 and 1973-74, Kensington 1923,
 Watford 1974, Guildford, Godalming & Neighbourhood 1953, and
 Hammersmith 1939-40; together with **The Regency Directory For Staines**
Urban District 1957-8. (7)
£45-85



743

743
The Victoria History of the County of Essex, vols. 1, 3, 4, 5, 6, 8, 9 and
 Biography supplement, 1ge. 8vo, cloth, illus., 1977-1994; and **History of the**
County of Middlesex, vols. 1, 3, 4, 6 and 7, 1ge. 8vo, cloth. illus., 1969-1982.
 (13)
£250-350



744

744
Rogers (Rev. Charles) The Book of Wallace, 2 vols, 4to, gilt-cloth, printed for
 The Grampian Club, Edinburgh, 1889; and **Tancred of Weems (George)**
Rulewater and Its People, 8vo, illus., Edinburgh 1907, signed copy with three
 manuscript letters tipped in.
£50-80



745

745
Home (John) The History of the Rebellion in the Year 1745, 4to, quarter-
 calf and marbled boards, illus with four fold-out maps and engraved portrait
 of Charles Edward Stuart, 1802; and **Forbes (Duncan George) Culloden**
Papers: an extensive and interesting correspondence... 1625-1748, 4to,
 half-calf and marbled boards, illus., 1815.
£120-220



746

746

Adamson (Charles Murray) Studies of Birds, ob. 8vo, printed soft covs, illus., published by Andrew Reid, Newcastle 1881; **Some More Illustrations of Wild Birds**, ob. 8vo, parchment-covered boards, Newcastle 1887, bearing the bookplate of Richard Welford; and **Another Book of Scraps**, Principally Relating to Natural History, ob. 8vo, original printed boards, illus., printed by Andrew Reid, Newcastle 1882. (3)
£80-140



747

747

Grey (Viscount of Fallodon) The Charm of Birds, 8vo, grained-calf, illus. with woodcuts by Robert Gibbings, first edition, second impression, 1927; **Halliday (W.) The Book of Migratory Birds**, 8vo, gilt-cloth, illus., n.d.; **Noble (Sir George) Birds of Jesmond Dene**, 8vo, boards, illus., n.d.; **Coward (T.A.) and Blyton (Enid) Birds of the Wayside & Woodland**, 16mo, cloth, illus., published by Frederick Warne, 1945; and two volumes of **The Ornithological Reports for Northumberland & Durham 1943-51 and 1952-58**. (5)
£70-110



748

748

Transactions of The Natural History Society of Northumberland, Durham & Newcastle upon Tyne, 2 vols, 4to, half-calf, illus., printed by Emerson Charnley, Newcastle 1831, 1838, 1874 and 1932.
£35-65



749

749

Natural History Transactions of The Northumberland & Durham Natural History Society, 2 vols, 8vo, half-calf and marbled boards, illus., 1867 and 1868, together with vol. 6 in paper covs. 1874; **Vol. 2 (new series)**, 8vo, hard cov., illus., Newcastle 1906 (containing a preliminary list of Durham Diptera compiled by the Rev. W.J. Wingate; and **Weightman (Colin) The Border Bees**, 8vo, cloth, illus., 1961, with d.w. (5)
£70-110



750

750

Robson (John E.) A Catalogue of the Lepidoptera of Northumberland, Durham & Newcastle upon Tyne, in two parts, being Vol. 12 of The Natural History Transactions of Northumberland, Durham & Newcastle 1902; **Dunn (P.C.) and Parrack (J.D.) The Moths & Butterflies of Northumberland & Durham**, being Supplements No's. 2 and 3 to the Vasculum or Transactions of The Northern Naturalists' Union, Houghton-le-Spring 1986; and **Bolam (George) The Lepidoptera of Northumberland & The Eastern Borders**, 8vo, paper covs., Edinburgh c.1928; together with four parts of the History of The Berwickshire Naturalists' Club, 8vo, paper covs., 1925-1931, enclosed in book-pattern box: all in matching blue grained-leather 4to bindings. (3)
£80-120



751

751
The Magazine of The Northern Naturalists' Union, 12 hard-bound volumes containing parts 1-21 (1915-1935), parts 27-90 (1942-2005); together with four parts of Vol. 1 and part 1 of Vol. 2 of **The Transactions of The Northern Naturalists' Union**, printed paper covs., Newcastle 1931-1936, and 1953. (17) £100-150



752

752
Huxley (Anthony) and Griffiths (Mark) (Editors) The New Royal Horticultural Society Dictionary of Gardening, 4 vols, 4to, cloth, illus, The Folio Society, 1999, in d.s.; and **The Garden Illustrated Weekly Journal**, vol. 11, in half-morocco bindings, June and July 1877. £50-80



753

753
Johnston (George) A Flora of Berwick-upon-Tweed, 2 vols, sml. 8vo, half-calf, illus. with eight plates, 1829 and 1831; together with **An English Flora**, lacking title page, published by the Society for Promoting Christian Knowledge, lge. 4to, marbled boards, with hand-coloured engravings. (3) £150-250



754

754
Martyn (Thomas) Flora Rustica, 2 vols. in 1, half-calf and marbled boards, illus. with 72 hand-coloured plates, 1792. £80-120



755

755
Wilson (John) A Synopsis of British Plants in Mr. Ray's Method, 8vo, quarter-calf and marbled boards, illus., Newcastle 1744. £50-80



756

756
Twamley (Louisa Anne) Our Wild Flowers Described and Illustrated, 8vo, embossed and gilded boards, illus. with hand-coloured plates, 1943; and **Culpepper (Nicholas) The English Physician Enlarged With Medicines Made of English Herbs**, 8vo, calf, n.b. £40-60



757

757
Step (Edward) Wayside & Woodland Blossoms, 3 vols, 14mo, gilt-cloth, illus., published by Frederick Warne, 1938, 1933 and 1935; and **Farrer (Reginald) The English Rock-Garden**, 2 vols, 4to, cloth, illus., 1948. (5)
£40-60



758

758
Folio Society: facsimile of Tractatus de Herbis in the British Library, folio, printed goatskin with separate commentary volume by Minta Collins, both contained in publisher's original solander box, limited edition of 1000 numbered copies, London 2002.
£200-300



759

759
The Mayflower Descendant, a quarterly magazine of Pilgrim Genealogy and History, 11 vols, 8vo, cloth, published by The Massachusetts Society of Mayflower Descendants, Boston 1899-1909.
£50-80



760

760
Marshall (George W.) (Editor), 7 vols, half-morocco and marbled boards, 1877-1883.
Provenance: The Collection of Lord Cullen of Ashbourne.
£60-100



761

761
Courthope (William) (Editor) Debrett's Baronetage of England, sml. 8vo, half-morocco and marbled boards, illus. with engravings, 1835; and **Doyle (James E.) The Official Baronage of England**, 3 vols, 4to, quarter-morocco, illus., 1886.
£100-160



762

762
Burke (John) and Bernard (John) Dictionary of the Landed Gentry, 2 vols, 8vo, calf, 1846, with bookplates of James Dearden of Rochdale and Captain Hubert Berkeley; and **Walford (Edward) The County Families of the United Kingdom**, lge. 8vo, gilt-cloth, 1880.
£45-85



763

763
Coleman (James) General Index to Printed Pedigrees, and Marshall (George W.) An Index to the Pedigrees In Printed Heralds' Visitations, 2 vols in 1, 8vo, half-morocco, 1866; **The Royal Blue Book, Fashionable Directory, and Parliamentary Guide**, sml. 8vo, embossed and gilded board, 1847; and **Kelly's Handbook to the Titled, Landed and Official Classes**, 8vo, embossed-cloth, 1934. (3)
£60-100



764

764
Alison (Archibald) History Of Europe During The French Revolution, 3 vols, 8vo, calf, 1833 and 1835.
£30-45



765

765
Howard (Joseph Jackson) and Crisp (Frederick Arthur) (Editors) Visitation of England & Wales, vols 1-11, 14-20, 4to, quarter-vellum, privately printed and limited to 500 signed and numbered copies, 1893-1919.
£200-300



766

766
Burke (Sir Bernard) Burke's Landed Gentry, Vols. 1 and 2, 8vo, gilt printed boards, 1894; **Burke's Handbook To The Order of the British Empire 1921**; and **Debrett's Peerage 1879**. (4)
£45-75



767

767
Kelly & Co., Handbook to the Upper Ten Thousand, Titled, Landed and Official Classes, 4to, gilt-cloth, 1878, 1899, 1916, 1954, 1962 and 1963. (6)
£80-120



768

768
Who's Who British Edition 1964, 8vo, gilt-cloth with d.w.; and **Who's Who International Edition**, 4to, cloth, 1987-88, 1989, 1992-93, 2001, and 2003. (6)
£45-85



769

769

The Registers of Pharmaceutical Chemists & Druggists, 4to, embossed and gilded boards, 1901; **Who's Who In Medicine & Healthcare**, fifth edition, 4to, cloth, 2005; and **Churchill's Medical Directory** for the years 1872, 1905, 1913, 1934 and 1942.

£80-140



770

770

Wilmot (R.W.E.) (Editor) Liber Melburniensis 1858-1914: A History of the Church of England Grammar School, Melbourne, 8vo, gilt-cloth, illus., Melbourne 1914; **The Newton Theological Institution Historical Catalogue 1825-1925**, 8vo, paper covs., Newton Centre, Massachusetts 1925; and **Crockford's Clerical Directory 1987-88**.

£30-50



771

771

Withers (Don J.) (Editor) A Register of Admissions to Kings College, Cambridge 1850-1900, 8vo, cloth, 1903; **Nicolls (Maj. O.C.C.) (Editor) A Register of the Alumni of Keble College, Oxford 1870-1925**, 4to, cloth, illus., Oxford 1927; and **St. Edmund Hall, Oxford Who's Who**, 8vo, cloth, 1995. (3)

£35-65



772

772

Scarborough (Kathleen) and Mason (C.A.F.) (Editors) Eton: The Old Public-School Boys' Who's Who Series, 4to, cloth, illus. with frontispiece, first edition 1933; **The Eton Register 1893-1899**, sml. 4to, gilt-cloth, privately printed for the Old Etonian Association 1901; **The Charterhouse Register 1872-1910**, 2 vols, 8vo, gilt-cloth, 1911; and **Cheltenham College Jubilee Album**, 4to, embossed and printed boards, illus., Cheltenham 1891. (5)

£60-100



773

773

Rugby School Register 1675-1874, 2 vols, 8vo, cloth, 1881 and 1886; **Harrow School Register 1800-1925**, 2 vols, 8vo, cloth, 1911 and 1925; and **Wellington College Register 1859-1948**, 8vo, cloth, published for the Old Wellingtonian Society, Frome, Somerset, seventh edition 1951.

£60-90



774

774

Craze (Michael) A History of Felsted School 1564-1947, 8vo, cloth, illus., Cowell 1955, with d.w.; **The Glenalmond Register 1847-1929**, 8vo, gilt-cloth, illus., Edinburgh 1929; and other registers for Highgate School, Haileybury, and Aldenhams School. (5)

£50-80



775

775
Earle (Charles F.) and Body (Lawrence A.) (Editors) Durham School Register, 8vo, cloth, second edition, 1912; **The Sedbergh School Register 1546-1895**, 8vo, printed boards, Leeds 1895; **The Durham University Calendar with Almanac**, sml. 8vo, printed boards, Durham 1884; and **Foster (Joseph) (Editor) Pedigrees Recorded At The Visitations Of Durham**, 8vo, cloth, illus., privately printed, 1887.
£55-75



776

776
Layard (Sir Austen Henry) Nineveh and Its Remains, 2 vols, 8vo, half-calf, illus. 1849; **Layard (Sir Austen Henry) Nineveh and Babylon: A Narrative of a Second Expedition to Assyria**, 8vo, printed boards, illus., 1882; and **Layard (Sir Austen Henry) Discoveries In The Ruins Of Nineveh and Babylon**, facsimile edition, 8vo, simulated leather, time-life books, 1987. (4)
£80-120



777

777
Garstang (John) The Hittite Empire, 8vo, cloth, illus. with maps, plans and plates, 1929; **Peters (John Punnett) Nippur or Explorations & Adventures On The Euphrates**, 2 vols, 8vo, cloth, illus., New York 1897; **Frere (Sheppard) Britannia: A History Of Roman Britain**, 4to, cloth, illus., 1967; **Sykes (Sir Percy) A History of Persia**, 2 vols, 8vo, cloth, illus. with maps and plates, third edition, 1969; and other books on Ancient History. (11)
£45-65



778

778
Fairbairn (James) Book of Crests of the Families of Great Britain & Ireland, 4to, quarter-morocco, 1905; **The British Records Society: Wills at Chelmsford**, vol. 3, 1721-1858, 8vo, cloth, 1969; and **Slater (Gilbert) The English Peasantry and the Enclosure of Common Fields**, 8vo, cloth, illus., 1907. (4)
£30-50



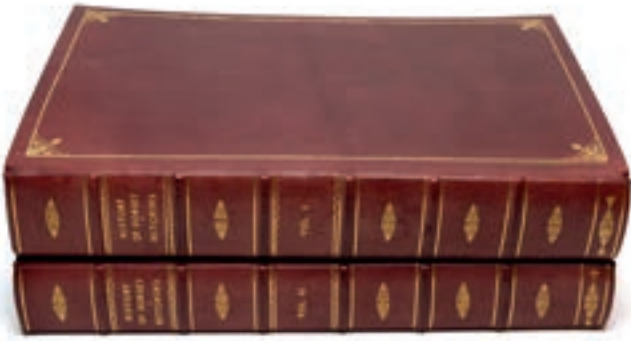
779

779
Doubleday (H. Arthur) (Editor) The Victoria History of the Counties of England: History of Hampshire and the Isle of Wight, 5 vols and index, lge. 4to, gilt-cloth, illus., Westminster 1900-1912.
£250-450



780

780
Doubleday (H. Arthur) (Editor) The Victoria History of the Counties of England: History of Wiltshire, vol. 3, and **History of Dorset**, vol. 3; and **Kelly's Directory of Surrey**, 4to, cloth, 1915. (3)
£50-75



781

781
Hutchins (John) The History & Antiquities of the County of Dorset, 2 vols, folio, grained-calf with gilt linework, illus. with engraved plates and fold-out maps, printed by W. Bowyer and J. Nichols, 1774.
£250-450



782

782
Excursions in the County of Essex: A Complete Guide for the Traveller and Tourist, 2 vols, 16mo, half-calf and marbled boards, illus. with engravings and fold-out maps, 1818 and 1819.
£100-180



783

783
Fox-Davies (Arthur Charles) Armorial Families, 2 vols, 4to, cloth, illus., seventh edition 1929; and **Moulton (H.R.) (Editor) Talaeography, Genealogy and Topography**, 4to, quarter-calf, illus., 1930. (3)
£50-80



784

784
Lydgate (John) The Life of St. Edmund, King and Martyr, facsimile of the original in the British Library, 8vo, printed goatskin, together with cloth-bound commentary, both enclosed in publisher's original solander box.
£100-200



785

785
The Folio Society: a facsimile edition The Queen Mary Atlas from The British Library, atlas folio in full-grain, aniline-finish, calf-leather, blocked with an armorial design by David Eccles, with separate commentary volume by Peter Barber, both enclosed in publisher's original solander box, limited edition of 1000 numbered copies, Cambridge 2005.
£300-500



786

786
Scott (Sir Walter) Minstrelsy of the Scottish Border, 3 vols, 8vo, gilt-calf, fifth edition, Edinburgh 1812.
£35-55

787
Camden (William) and Gough (Richard)
**Britannia: A Chorographical Description of
England, Scotland & Ireland**, 4 vols, folio, gilt-
calf, illus. with engravings and maps, 1806.
£600-900



787



788

788
Strickland (Agnes) (Editor) **The Letters of Mary Queen of Scots**, 2 vols, 8vo,
half-calf and marbled boards, illus., printed by Henry Colburn 1848 and 1845.
£50-80



789

789
Cookson (Catherine) My Beloved Son, 8vo, cloth, first edition 1991, signed
and dedicated on Author's bookplate; together with a manuscript letter from
the Author to Dawn Radman; **Cushing (Peter) An Autobiography**, 8vo, cloth,
illus, first edition 1986, signed by the Author; **Kray (Reg and Ron) Our Story**,
third impression 1988, signed copy; and two other signed books. (5)
£60-100



790

790
A Bible in English, King James Version, Old and New Testaments, lge. 4to,
gilt morocco, Cambridge printed at the Pitt Press by John William Parker, 1839
and 1844.
£60-100



791

791
**Salmon (William) The Complete English Physician or The Druggists Shop
Opened**, 8vo, full-calf, printed for Matthew Gilliflower 1693.
£200-350



792

792
Pollock (Timothy) *The London Pharmacopeia For The Use Of Medical Students*, 8vo, half-calf and marbled boards, 1829; and **Hervey (James)** *Meditations & Contemplations*, sml. 8vo, illus. with engraved frontispiece, 1814.
£30-50



793

793
His Majesty's Stationery Office, *Army Field Service Pocket Book 1914*, with 1916 amendments, 8vo, soft cloth covs. with map pocket, illus. with diagrams, plates, tables and maps, Harrison & Sons, London; **Cattaneo (Raffaele)** *Architecture In Italy*, 4to, buckram, illus., 1896; **Winner's Gems of Music**, lge. 4to, printed cloth, illus. with sheet music and plates; **The Queen's Gift Book**, 4to, cloth, illus., c.1918; and **The New Testament**, 48mo, soft covs., published by Collins' Press, n.d. (5)
£30-50



794

794
Lizars (John) *A System of Anatomical Plates of the Human Body...*, 12 parts in 1 vol., folio, half-calf, illus. with engraved title page, and 101 full-page engravings with those for Part 1 in sepia only, and subsequent parts hand-coloured, Edinburgh c.1826.
£450-750



795

795
Asprey & Co. Ltd., New Bond Street, London: *Asprey's Reference Library*, comprising: an Atlas of the World, Dictionary of the English Language, Encyclopaedia, Gazetteer and other references, 8vols, 16mo, calf, in Asprey's-branded burr walnut book trough, 21cms wide.
£50-100



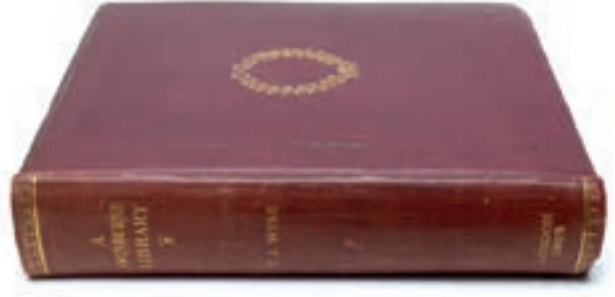
796

796
Baden-Powell (Robert Stephenson Smyth, First Baron) and Fisher (Claude) *The World Jamboree*, 4to, printed boards, illus., published by The Boy Scouts Association, London 1929; together with a World Jamboree 1929 certificate of thanks, signed by Lord Baden-Powell of Gilwell.
£200-300



797

797
Howard (John) *The State of the Prisons In England & Wales*, 4to, calf, illus. with fold-out engravings, Warrington 1784; and Gisborne (Thomas) *An Enquiry Into the Duties of the Female Sex*, 8vo, calf, seventh edition, 1806. £45-75



798

798
Swinburne (Algernon Charles) (ed. Thomas James) *A Swinburne Library: Catalogue of Printed Books, Manuscripts and Autograph Letters*, 4to, gilt-cloth, illus., published for private circulation and limited to 30 copies, 1925. £40-60



799

799
The Cornhill Magazine, vols. 1-6, half-calf and marbled boards (three in black leather and three in green leather), January 1860-December 1862. £30-50



800

800
The Sporting Life, British Hunts and Huntsmen, 2 vols (of 4), large 8vo, half-morocco, illus., 1910 and 1911. £200-300



801

801
Hobson's *Fox-Hunting Atlas*, folio, half-calf, illus. with maps, by J. & C. Walker, 1860; and Goldsmith (Oliver) *A History of the Earth & Animated Nature*, 2 vols, 8vo, half-calf, illus. with plates and hand-coloured frontispiece, 1866. £45-85



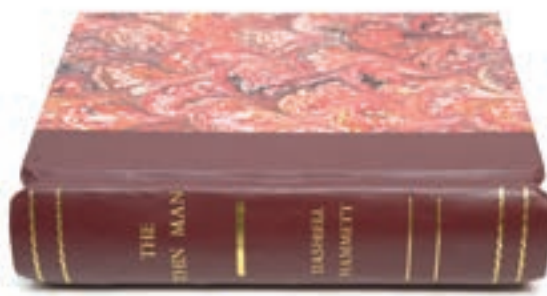
802

802
De Worde (Wynkyn) and Dame Juliana Berners (ed.) *A Treatyse Of Fysshynge wyth an Angle*, 4to, vellum, facsimile edition published by Elliot Stock, c.1878. £60-90



803

803
Fleming (Ian) You Only Live Twice, 8vo, cloth, first edition 1964, with d.w.
£50-80



804

804
Hammett (Dashiell) The Thin Man, 8vo, modern re-binding with marbled boards, first edition, Arthur Barker Ltd., Covent Garden, 1934.
£30-50



805

805
Malory (Sir Thomas) Le Morte D'Arthur, 4to, gilt cloth, illus by Aubrey Beardsley, J.M. Dent & Sons, 1927.
£70-110



806

806
Thackeray (William Makepeace) The Works Of: Henry Esmond, Pendennis, The Newcomes, The Virginians, and Miscellanies, 8 vols, 8vo, gilt-calf and marbled boards, 1858, 1863, 1867, 1868 and 1869.
£60-90



807

807
Wagner (Richard) (trans. Margaret Armour) The Ring of the Nibelung, 4to, cloth, illus. by Arthur Rackham, first edition 1939; **James (Grace) Green Willow and other Japanese fairy tales**, 4to, gilt-cloth, illus. by Warwick Goble, 1910; **Stephens (James) Irish Fairy Tales**, 4to, cloth, illus. by Arthur Rackham, 1920; and **Wilson (Richard) The Russian Story Book**, 4to, gilt-cloth, illus. by Frank C. Papé, 1916. (4)
£150-200



808

808
de La Motte-Fouqué (Friedrich) Undine, quarto, gilt-vellum, illus. by Arthur Rackham, William Heinemann, London 1909, limited edition of 1000 numbered and signed copies of which this is No. 834.
£80-120

Third Party Liability.

Every person on Anderson & Garland Ltd.'s premises at any time shall be deemed to be there at his own risk. He shall have no claim against Anderson & Garland Ltd. in respect of any accident which may occur or injury, damage or loss howsoever caused, save insofar as the injury, damage or loss shall be caused by the direct negligence of Anderson & Garland Ltd.'s employees.

GENERAL CONDITIONS OF SALE

1. Definitions.

In these Conditions Anderson & Garland Ltd. who act only as auctioneers and agents for the vendor, are called "The Auctioneers", and the representative of Anderson & Garland Ltd. conducting the auction is called "The Auctioneer".

2. General.

Whilst Anderson & Garland Ltd. make every effort to ensure the accuracy of their catalogue and the description of any lot:

(a) Each lot as set out in the catalogue or as divided or combined with any other lot or lots is sold by the vendor with all faults, imperfections and errors of descriptions.

(b) Anderson & Garland Ltd. do not accept responsibility for the authenticity, attribution, genuineness, origin, authorship, date, age, period, condition or quality of any lot, unless they have been instructed in writing by the vendor so to certify, and in such case the Auctioneers do so as agents of the vendor and are not themselves responsible for such claims.

(c) All statements, whether printed in the catalogue or made orally, as to any of the matters set out in (b) above are statements of opinion only and are not to be taken as being or implying any warranties or representations of fact by Anderson & Garland Ltd., unless they have been instructed in writing by the vendor so to certify, and in such case the Auctioneers do so as agents of the vendor and are not themselves responsible for such claims.

(d) Any claim under any Statute must be received in writing by the Auctioneer within ten days of the day of the sale.

3. The Auction.

(a) The Auctioneer has absolute discretion to divide any lot, to combine any two or more lots or to withdraw any lot or lots from the sale, to refuse bids, regulate bidding or cancel the sale without in any case giving any reason or without previous notice. He may bid on behalf of the vendor for all goods which are being offered subject to reserve or at the Auctioneer's discretion.

(b) The highest bidder shall be the buyer except in the case of a dispute. If during the auction the Auctioneer considers that a dispute has arisen, he has absolute discretion to settle it or to re-offer the lot. The Auctioneer may at his sole discretion determine the advance of bidding or refuse a bid.

(c) Each lot is put up for sale subject to any reserve price placed by the vendor. Where there is no reserve price (but not otherwise) the seller has the right to bid either personally or by any one person (who may be the Auctioneer).

(d) All conditions, notices, descriptions, statements and other matters in the catalogue and elsewhere concerning any lot are subject to any statements modifying or affecting the same made by the Auctioneer from the rostrum prior to any bid being accepted for the lot.

4. Rescission.

Notwithstanding any other terms of these conditions, if within seven days after the sale Anderson & Garland Ltd. have received from the buyer of any lot notice in writing that in his view the lot is a deliberate forgery and within fourteen days after such notification the buyer returns the same to Anderson & Garland Ltd. in the same condition as at the time of sale and by producing evidence, the burden of proof to be upon the buyer, satisfies Anderson & Garland Ltd. that considered in the light of the entry in the catalogue the lot is a deliberate forgery, then the sale of the lot will be rescinded and the purchase price of the same refunded. In the event of a dispute then the matter shall be settled by arbitration, the arbitrator to be nominated by the President of the Royal Institution of Chartered Surveyors. Both the buyer and the vendor agree to be bound by the decision.

5. Default.

Anderson & Garland Ltd. disclaim responsibility for default by either the buyer or the vendor because they act as agents for the vendor only and therefore do not pay out to the vendor until payment is received from the buyer. Instructions given by telephone are accepted at the sender's risk and must be confirmed in writing forthwith.

6. In the event of a sale by private treaty both the vendor and the buyer agree to be bound by the General and any Special Conditions of Sale.

BUYERS CONDITIONS

7. Inspection.

Each buyer by making a bid for a lot acknowledges that he has satisfied himself fully before bidding by inspection or otherwise as to all the Sale conditions the physical condition of and description of the lot including but not restricted to whether the lot is damaged or has been repaired or restored. We will be happy to provide a condition report and additional images upon request.

7a. Photography Information.

Whilst every care is taken to photograph lots accurately, it is only possible to give approximate representations in our catalogues, on our website and elsewhere. Images are for general guidance only, and colours in particular will vary – especially when viewed on a screen. Bidders are directed to item 7 of our General Conditions of Sale and are advised to attend our viewing days. We cannot accept returns on the basis of inaccuracies caused by the limitations of photographic reproduction.

8. Property and Risk.

Legal title will not pass to the buyer until the lot(s) has been paid for in full and the Auctioneers shall be entitled to a lien on any lot sold until the purchase price (as defined in 11 below) is paid in full but each lot is at the sole risk of the buyer from the fall of the hammer. Each buyer shall forthwith give his full names and permanent address and if called upon to do so by the Auctioneer shall forthwith pay to Anderson & Garland Ltd. such proportion of the purchase price as the Auctioneer may require. If the buyer fails to do so, the lot may at the Auctioneer's sole discretion be put up again and re-sold.

9.

Every bidder shall be deemed to act as principal unless there is in force a written acknowledgement by Anderson & Garland Ltd. that he acts as agent on behalf of a named principal.

10. Removal of Goods.

(a) No purchase shall be claimed or removed until it has been paid for and the sale has been concluded. All purchases shall be paid for and removed at the buyer's risk and expense by the end of the second working day following a Town & County sale or Specialist sale and by the end of the fifth working day following a Fine Art sale, failing which the Auctioneer shall not be responsible if the same are lost, stolen, damaged or destroyed. All lots not so removed shall remain at the risk of the buyer and at the end of seven days (one week) following the sale, goods shall be collected will be placed in a temporary storage area, the buyers account charged with £20 + VAT administration fee and will be subject to a minimum warehousing charge of £1 per lot per day thereafter. If they are not paid for and removed within seven days of the sale the Auctioneer may re-sell them by auction or privately without notice to the buyer. Any liability which there may be on the part of the Auctioneer in respect of any loss shall be restricted to a maximum of the price paid by the buyer of the lot.

(b) Goods will only be released to the successful bidder who can produce proof of identification. In the case of third party/courier collection we will require written instructions from the buyer who must have paid prior to collection. Any buyer paying by cheque must wait seven days for funds to clear.

(c) In the event of any failure of the buyers to comply with any of the above conditions the damages recoverable by the seller or the Auctioneers from the defaulter shall include any loss arising on any re-sale of the lot, together with the charges and expenses in respect of both sales, and together with interest at 2% above Barclays Bank PLC Base Rate upon the price of any lot which has not been paid for within seven working days of the sale, and any money deposited in part payment shall be held by the Auctioneers on account of any liability of the defaulter to them or to the seller. Cheques drawn by third parties, whether in the Auctioneer's favour or requiring endorsement, cannot be accepted

(d) Although Anderson & Garland Ltd. Do not offer a post and packing service they are pleased to recommend Mailboxes etc. Newcastle who can be contacted by email info@mbenewcastle.co.uk or telephone 0191 222 0018.

11. Purchase Price.

The purchaser shall pay the hammer price together with a premium of 22% of the hammer price (adjusted for VAT as necessary). The premium at the appropriate rate is payable by all purchasers. The amount invoiced will be the hammer price plus premium adjusted for VAT (where VAT is chargeable) but the VAT will not normally be recoverable by the buyer. This will be applied at the point of sale and an invoice will be issued to the buyer which will be marked as paid upon receipt of payment in full. For any lots bought by telephone bidders for less than £250 a charge of £10 plus VAT per lot will be payable. The vendor authorises the Auctioneer to deduct commission and expenses at the stated rates from the hammer price and acknowledges the Auctioneer's right to retain the premium payable by the purchaser.

IMPORTANT NOTES FOR BUYERS

BIDS

We will be pleased to execute bids on behalf of intending buyers, and no charge is made for this service. Lots will be purchased as cheaply as permitted by other bids and reserves. Bids must be submitted to the Commissions Department at least half an hour before the sale commences, and should be entered on the forms provided. Bids left by telephone or email will be accepted only on the condition that they are at the sender's risk, and in the case of verbal instructions must in any case be confirmed in writing.

EXPORT LICENSING REGULATIONS FOR WORKS OF ART, ANTIQUES, COLLECTORS' ITEMS AND FIREARMS

In general, an export licence is required for the export of any item manufactured or produced more than 50 years (60 years in the case of photographic positives and negatives) before the date of exportation which falls within any of the following categories:

- (a) its value exceeds £20,000* or, in the case of photographs and photograph albums exceed £500*; or
 - (b) British historical portraits having a value of £5,000* or more; or
 - (c) documents, manuscripts or archives (other than printed books) including architectural, scientific or engineering drawings to scale produced by hand of any value; or
 - (d) archaeological items.
- (*inclusive of the buyer's premium and VAT)

NOTE:

Archaeological items include any item which has been recovered at any time from the soil of the United Kingdom or from the bed of any lake, river, stream or other area of water therein or from the bed of the sea within the territorial waters of the United Kingdom (other than coins or articles recovered only after burial or concealment at a date less than 50 years before the date of exportation).

FIREARMS:

An export licence is required for all types of firearm, rifles, pistols, shotguns and firearms of all types not more than 100 years old irrespective of value. However, firearms over 100 years old may still require a certificate for possession in the U.K.

IMPORTANT NOTICE

Droit de Suite Royalty Charges

From 1st January 2012 all UK art market professionals (which includes, but is not limited to: auctioneers, dealers, galleries, agents and other intermediaries) are required to collect a royalty payment for all works of art that have been produced by living artists and works by artists who have died within the last 70 years (following the existing term of copyright). This is an extension of the previous legislation.

Please note that payment of a royalty is not required in every case and will only be collected when the hammer price equals or exceeds the UK sterling equivalent of 1,000 euros.

The threshold level is for estimation purposes only, it is entirely the responsibility of the buyer to acquaint himself with the actual EURO to UK Sterling exchange rate on the day of the sale in this regard, and the auctioneer accepts no responsibility whatsoever if the qualifying rate is different to the rate indicated. The actual qualifying threshold will be calculated by the Artist's Resale Right Service Hub based on the European Central Bank reference rate published at 2.15pm on the day of the sale, and can be found on www.dacs.org.uk.

All items in this catalogue that are marked with '8' are potentially qualifying items, and the royalty charge will be applied if the hammer price achieved is more than the UK sterling equivalent of EURO 1,000. The royalty charge will be added to all relevant invoices, and must be paid before items can be cleared. All royalty charges are paid to the Design and Artists Copyright Society ('DACS'), no handling costs or additional fees with respect to these charges will be retained by the auctioneer.

The royalty charge that will be applied to qualifying items which achieve a hammer price of more than the UK sterling equivalent of EURO 1,000, but less than the UK sterling equivalent of EURO 50,000 is 4%. For qualifying items that sell for more than the UK sterling equivalent of EURO 50,000 a sliding scale of royalty charges will apply - for a complete list of the royalty charges and threshold levels, please see www.dacs.org.uk. There is no VAT payable on this royalty charge.

For all questions relating the regulations regarding Droit de Suite royalty charges, please see www.dacs.org.uk, telephone +44 (0) 845 410 3410, or email arr@dacs.org.uk.

LIVE AUCTION CARD USERS

In completing the bidder registration on www.the-saleroom.com and providing your card details and unless alternative arrangements are agreed with Anderson & Garland Ltd. You:

(i) authorise Anderson & Garland Ltd., if they so wish, to charge the card given in part or full payment, including all fees, for items successfully purchased in the sale via the-saleroom.com, and

(ii) confirm that you are authorised to provide these card details to Anderson & Garland Ltd. through www.the-saleroom.com and agree that Anderson & Garland Ltd. are entitled to release goods for shipment to the card holder name and card holder address provided in fulfilment of the sale

Established 1840

Anderson & Garland

Auctioneers

Privacy Notice

A big change towards the UK's data privacy law came into effect on 25th May 2018. The General Data Protection Regulation (GDPR) is a positive change towards giving you more control over how your data is used and how you are contacted.

Anderson & Garland Ltd. is committed to protecting the privacy of your personal information and as such we have set out below the information we will collect from you, how long we will keep it, why we collect the information and the legal basis for our processing of your personal information under Data Protection Law.

Also outlined below are your rights in relation to your personal data once you have given it to us, details of our subcontractors with whom we may share your information where necessary and the length of time we will retain information collected from you.

WHAT TYPE OF PERSONAL INFORMATION DO WE COLLECT AND HOW DO WE USE IT?

The personal information we collect from you is used primarily to enable us to provide the specific service you require. If we need to contact you in relation to your account we will use the data you provide to do so. We may use your details to inform you of future sales but this would be limited to specialist items that you have previously shown an interest in.

The personal information we may collect will be:

- Your name
- Your address
- Additional address details (if you require goods to be sold relating to another property)
- Your contact telephone number (including mobile number where applicable)
- Your email address
- Your bank account details (if you are a vendor who would like proceeds paid directly)

- Proof of ID/address (if you require telephone bidding or high value bidding)
- Details of the estate, including details of executors (if you require us to provide services relating to a deceased person)
- Personal details for the beneficiary together with permission from them (if you are acting as an agent on behalf of someone)

WHO MIGHT WE SHARE THIS INFORMATION WITH?

There are third parties with whom we may share your information. These are companies who provide a service, either directly to Anderson and Garland Ltd., or to our clients directly where we subcontract services (for example the arrangement of carriage of goods). It is essential that they have access to this information to enable us to provide you with the service you have requested. Information will only be shared or accessed where it is necessary for us to do so. These companies include:

- Cavtec Systems Ltd. - the IT support company who manages our IT network for us.
- Auction Technology Group – who provide the live bidding platform for online bidding
- Gary Cook of Newburn or another carrier we may recommend – who we may arrange the carriage of goods into our auction house for sale on your behalf upon request
- Mailboxes etc. Newcastle or another courier whom you instruct us to release goods to – who we may assist in the collection of goods bought from us for delivery to you upon request.
- Go Auction Ltd. – who host our website and provide marketing email support services.

WHAT IS THE LAWFUL BASIS FOR OUR HOLDING & PROCESSING YOUR PERSONAL INFORMATION?

We have carefully considered the lawful basis for processing of personal information and have included a list of services below and the lawful basis we consider applies in each case. Presenting the information in this way will assist you in understanding your rights in relation to the personal data held and the length of time we will hold the information.

Lawful Basis	Retention Period	Service Provided
Contract	7 years from the conclusion of the contract	Sale of items in our auction
		Purchase of items in our auction
		Bidding in our auction
		Internal Valuations taking place Anderson House
		External Valuations taking place at an outside venue or in a customers' home
		Providing written valuations or services for private treaty or willing buyer/willing seller transactions
	Retention period unfixed due to the nature of service which is a lifelong service and often a post death service to the estate. Expected maximum length of retention 50 years	Providing written valuations for probate or insurance purposes
Legitimate Interest	7 years after the last business interaction/activity unless we receive a request to be removed from the applicable service provision list	Provision of our printed catalogue by post
		Invitations to private view events we may hold
		Invitations to consign items
		To inform you of specialist items that you have previously shown an interest in
Consent	Until a request to be removed is received (an unsubscribe option will be provided on every email)	General sales information / auction auction updates by email
		e-newsletters by email

WHAT ARE YOUR RIGHTS IN RELATION TO THE PERSONAL INFORMATION HELD?

The GDPR sets out the following rights for data subjects;

- The right to be informed
- The right of access
- The right of rectification
- The right to erasure (known as the right to be forgotten)
- The right to restrict processing
- The right to object

Further information may be found on the Information Commissioner's website <https://ico.org.uk/for-the-public/>

Subject access requests to allow individuals to find out more about the personal data the Company holds about them, what it is being used for and why may be made in writing addressed to the Company's General Manager at Anderson House, Crispin Court, Westerhope, NE5 1BF. Responses will be made within one month or where a request is complex or numerous requests are made this may be extended to two months.

PACKING AND SHIPPING

Antiques and Art

Purchasing a lot from this Anderson & Garland sale?

Need to have it packed and delivered?

Just contact the experts at Mail Boxes Etc.

We pack and ship for most of the UK's major auction houses and now offer our total door to door service to all Anderson & Garland clients.

For more information contact:
Andrew at Mail Boxes Etc
Email: info@mbenewcastle.co.uk

Tel: 0191 222 0018
Fax: 0191 222 0028

58 Low Friar Street
Newcastle NE1 5UE
ENGLAND



MAIL BOXES ETC.®

Established 1840

Anderson & Garland

Auctioneers

Important Notices

NOTICE TO BUYERS

The Auctioneers operate a buyer bid number system for bidding in person which purchasers are required to attend at the Sales Office prior to the Sale, so that full details of the intending purchaser's name, address, bankers and other relevant information may be recorded. Failure to obtain a buyer's bid card may result in the Auctioneer refusing to accept your bid.

PAYMENT

Buyers Premium will be charged at 22% plus VAT. Our payment terms following Fine Art sales are five working days following the sale and methods of payment are bank transfer, credit/debit card, cash or bankers draft; cheques will be subject to full clearance through the banking system before collection of goods.

Payments by debit or credit card can only be made in person or via our website www.andersonandgarland.com.

IF YOU CANNOT ATTEND THE SALE

You are advised, whenever possible, to attend the sale and bid yourself, but if you cannot, Anderson and Garland Ltd. are always pleased to bid on your behalf. This service is free and all bids are treated in strict confidence. You should complete one of the Commission Forms, found either in this catalogue or available from the reception counter, and hand it to our commissions clerk. We will buy the lot(s) for you as cheaply as allowed by other bids and reserves as are on our books. Commissions placed by telephone are accepted only at the bidder's risk. Please Note: Anderson and Garland Ltd. will not be responsible for any error or failure to execute absentee bids.

FOR LOTS OVER £250 – IF YOU WISH TO BID BY TELEPHONE DURING THE SALE

Despite our best efforts Anderson and Garland Ltd. may be unable to contact the intending bidder at the appropriate time.

All such arrangements are therefore made entirely at the intending bidder's risk.

We only accept telephone bidding registrations up to the day prior to the lot in question going under the hammer. At the point of registration all new bidders will be required to submit proof of identification and proof of address. This can be faxed to 0191 430 3001 or emailed to a.orgill@andersonandgarland.com. Only when this identification is received can the registration process be completed and your telephone line will then be secured for you.

CONDITION OF LOTS AND CONDITION REPORTS

Buyers are particularly advised to check the condition of lots personally. If called upon to do so we will provide a verbal Condition Report on a particular item without charge or obligation as a matter of courtesy. Digital images can be supplied via e-mail upon request. Our obligation over the printed or oral descriptions applied to the property sold in our salerooms is limited. Please refer to Clauses 2, 3, and 7 of the Conditions of Sale.

ESTIMATES

Auction estimates are supplied throughout the catalogue for the convenience of buyers. They are intended as a guide only and should not be taken as an indication of minimum acceptance prices.

DESPATCH

Anderson and Garland Ltd. do not offer a postage and packing service but would recommend MailBoxes Etc Newcastle for packing and delivery of purchases. Please see page 206

Watercolours, Drawings & Oil Paintings

The forenames and surnames of the artist

In our opinion a work by the artist.

"Attributed to . . ."

In our opinion probably a work by the artist.

"Studio of . . ."

In our opinion a work by an unknown hand in the studio of the artist possibly under his supervision.

"Circle of . . ."

In our opinion a work of the period of the artist and showing his influence.

"Style of . . ."; "Follower of . . ."

In our opinion a work in the artist's style and of similar period, but not necessarily by a pupil

"Manner of . . ."

In our opinion a work in the artist's style but of a later date.

"After . . ."

A copy of a work by the artist.

"Signed . . ."; "Inscribed . . ."; "Dated . . ."

In our opinion the work has been signed/dated/inscribed by the artist.

"With signature . . ."; "With date . . ."

"With inscription . . ."

In our opinion the signature/date/ inscription may be by a hand other than that of the artist

All references to signatures, inscriptions and dates refer to the present state of the work.

When one or more of the artist's names is not known, a series of asterisks, whether preceded by an initial or not, indicates the work is by the artist named.

Estimates

Auction estimates are supplied throughout the catalogue for convenience of buyers. They are intended as a guide only and should not be taken as an indication of minimum acceptance prices.

With few exceptions, items of value less than £50 do not carry an estimate.

The Book Auction

Wednesday 4th & Thursday 5th May



Entries now invited:
0191 430 3000
info@andersonandgarland.com



SELL WITH US

Now welcoming entries to Spring/Summer Auctions

www.andersonandgarland.com | 0191 430 3000 | info@andersonandgarland.com

Antique Costume & Textiles

As part of The Collectors' Auction
29th & 30th June 2022



Entries now invited

E: info@andersonandgarland.com, T: 0191 430 3000



Providing Sales by both

Open Market & Traditional Auction

(Land, Residential & Commercial Units)

Our Specialist Service Includes:

- Free Valuations & Marketing Advice
- Extensive Market Exposure (inc' Rightmove)
- Accompanied Viewing Service
- Professional Help & Support Throughout

Our Experienced, Qualified and Regulated Team are on hand to ensure your sale...

- At The Right Price
- With No Upfront Costs
- Smoothly & Professionally
- Within The Desired Timescale



For further information contact our property expert
Gareth Jones on 0191 430 3025.
Alternatively, email info@agpropertyauctions.com



www.agpropertyauctions.com



Specialist Valuation Days 2022

1st April – Antiquarian books

Items of particular interest are:
early printed works, medieval and early modern manuscripts,
modern first editions, local interest books and maps, illustrated works.

Full collections and single entries welcome.

13th & 14th April - Mid Century-Modern and Music

Items of particular interest are:
Modern Art, Furniture, Jewellery, Musical Instruments, Vintage Vinyl,
Glass, Ceramics, Asian Art, Sculpture.

27th & 28th April – Collectors'

Items of particular interest are:
Militaria, Coins, Stamps, Medals, Vintage Textiles, Period Clothing,
Sports & Sporting Memorabilia, Advertising & Entertainment
Memorabilia, Toys.

We're holding a series of specialist auction valuation days at Anderson & Garland HQ in Newcastle. Our resident experts will be on hand to give free no-obligation sales valuations.

Auction valuations are by appointment only and last for 30 min.

If you would like to book a free no-obligation appointment,
call 0191 430 3000 or email info@andersonandgarland.com



Anderson House, Crispin Court,
Newbiggin Lane, Westerhope,
Newcastle, NE5 1BF

Telephone: (0191) 430 3000
Email: info@andersonandgarland.com

www.andersonandgarland.com