

Christmas Country House & Fine Interiors Auction, 1st Dec, 2022 - 2nd Dec, 2022

- 632 **A punch bowl in Chinese export style**, the interior painted with a huntsman on horse within a gilt and iron-red spearhead border, the exterior with Famille Rose floral garlands, sprigs and diaper border, pseudo seal mark, later wood stand, 36cms diameter.
£150-250



- 633 **A Chinese blue and white vase**, Qing, of ovoid form with waisted neck, double Buddhist lion handles, applied with chilong at the shoulders, decorated with scrolling flowers and foliage above a stiff leaf border, 44.5cms high.
£250-350



- 634 **A Chinese blue and white saucer dish**, Qianlong, decorated in underglaze-blue with four panels of a figure and fence divided by flowers sprays, 21cms diameter; and a fluted Chinese blue and white tea bowl and saucer.
£60-80



- 635 **A Chinese Famille Rose 'Guglet'**, Qianlong, decorated with barbed panels of a mother, dog and two boys, surmounted by ruyi-shaped puce camaieu landscape panels, 22cms.
£200-300



- 636 **A Chinese crackle glaze punch bowl**, early 20th Century, the exterior decorated in Famille Rose enamels with a continuous scene of warriors, some on horseback, between simulated bronze borders, four character incised mark, 37.7cms diameter.
£200-300



All lots are subject to a Buyer's Premium of 25% plus VAT (30% in total)

Christmas Country House & Fine Interiors Auction, 1st Dec, 2022 - 2nd Dec, 2022

- 637 **A Chinese blue and white ginger jar and cover**, 19th century, decorated with figures and butterflies in a garden setting, fitted hardwood stand, 28cms high, 31cms high overall.
£200-300



- 638 **A Chinese blue and white saucer dish**, Qianlong, decorated in underglaze blue with birds, prunus, flowers and rockwork, trellis and scallop shell border, 18.7cms diameter.
£80-120



- 639 **A pair of Chinese footed dishes**, 19th Century, decorated in iron-red with finger citrons, bats and characters, the bases decorated in blue and turquoise enamel with stylised waves, each with four character mark in iron-red, 14cms diameter. (2)
£100-200



- 640 **A pair of late 19th Century Chinese blue and white double gourd vases**, decorated with panels of figures, birds and flowering branches, four character marks, 20cms. (2)
£100-200



- 641 **A Chinese Famille Rose small charger**, Qianlong, decorated with pagodas and islands within an iron-red and gilt spearhead border and flower painted rim, 32cms diameter; and **two plates** decorated with rockwork, flowers and bamboo, 23.3cms diameter. (3)
£100-150



All lots are subject to a Buyer's Premium of 25% plus VAT (30% in total)

Christmas Country House & Fine Interiors Auction, 1st Dec, 2022 - 2nd Dec, 2022

- 642 **A pair of Chinese blue and white ginger jars and covers**, Qing, each painted in underglaze-blue with two maidens and a boy in landscape, four character Kangxi marks, 20.5cms high; and **another** decorated with antiques on a cracked-ice and prunus ground (cover lacking), 17.5cms. (3)
£200-300



- 643 **A late 18th Century Chinese export blue and white teapot**, decorated with figures, pagodas and islands, 15.5cms high.
£150-200



- 644 **A late 19th Century Canton Famille Rose punch bowl**, decorated with panels of figures, birds, flowers and insects, 34cms diameter; and a **Chinese Famille Rose vase and cover**, 25cms. (2)
£200-300



- 645 **Three Chinese turquoise glazed vases**, late 19th/ early 20th Century, of tree trunk form applied with cock and hen pheasants, each 26cms high. (3)
£150-180



- 646 **A Chinese blue and white dragon dish**, Qing, decorated with a central dragon chasing a flaming pearl within cloud scroll, the border with two further dragons, all on a blue ground, Qianlong seal mark in underglaze-blue, 25.2cms diameter.
£300-500



All lots are subject to a Buyer's Premium of 25% plus VAT (30% in total)

Christmas Country House & Fine Interiors Auction, 1st Dec, 2022 - 2nd Dec, 2022

- 647 **A small Kangxi blue and white pudding bowl**, decorated with flowers and florets within a lobed circular border, fitted with Dutch silver metal pierced handle, 16cms diameter.
£60-100



- 648 **A Chinese export blue and white meat plate**, Qianlong, of canted rectangular form, decorated with antiques, rockwork, flowers and trees within a complex border, 33cms; **a Chinese blue and white soup plate** decorated with geese, 22.5cms; and **an 18th Century Chinese porcelain soup spoon** with ruyi head finial, 11cms. (3)
£100-150



- 649 **A 20th Century blanc de chine style figure of a standing Buddha**, in cream coloured porcelain, 65cms high; and **a 20th Century Oriental bronzed figure** of sleeping man and tiger, 20cms. (2)
£200-300



- 650 **A Chinese blue and white baluster vase**, 18th/19th Century, decorated with panels of antiques and inscription, and a figure in a romantic landscape, seal mark in underglaze-blue, 22.5cms.
£70-100



- 651 **A Chinese blue and white baluster vase**, 19th Century, decorated with birds, flowering branches and insects, four character Kangxi mark, 28cms, with carved wood cover and stand.
£200-400



All lots are subject to a Buyer's Premium of 25% plus VAT (30% in total)

Christmas Country House & Fine Interiors Auction, 1st Dec, 2022 - 2nd Dec, 2022

- 652 **A Chinese celadon ground ovoid jar and cover**, 19th Century, decorated in underglaze-blue with growing peony and bats, 21cms high.
£60-100



- 653 **A Chinese blue and white tall jar**, 19th Century, decorated with antique vases and low tables, cover lacking, drilled base, 32cms high.
£150-250



- 654 **Chinese School**
(Qing)
Nine botanical and zoological studies; depicting insects surrounding native flora and fauna; including moths, butterflies, crickets, and beetles, watercolour and gouache on pith, each approximately 18 x 26cms, framed. (9)
£300-500



- 655 **An early 20th Century Chinese carved green soapstone seal** in the form of an Asian elephant, the sides engraved with mountain landscape and inscription, the seal with three carved characters, 8cms; and **Chinese horn snuff bottle** engraved with figures and bamboo, 8.5cms. (2)
£50-70



- 656 **A pair of Qing Chinese needlework sleeve bands**, embroidered with "forbidden stitch" or seed stitch in depiction of figures in a formal garden, 49 x 17.5cms, framed.
Provenance: F.J.B. Layzell, 23rd March 1926.
£80-120



All lots are subject to a Buyer's Premium of 25% plus VAT (30% in total)

Christmas Country House & Fine Interiors Auction, 1st Dec, 2022 - 2nd Dec, 2022

- 657 **Three early 20th Century Chinese watercolours**, each depicting a pagoda in mountainous landscape, inscribed and signed, seal marks, each 19cms x 21cms, framed and glazed. (3)
£50-70



- 658 **19th Century Chinese School: a black ink drawing on paper of a crane**, 25cms x 21cms, framed; **another** depicting a tiger and bird, 23cms x 30cms, framed, **and a third** depicting a bird of paradise, 23 x 15cms, framed. (3)
£50-100



- 659 **Five various 20th Century Chinese unframed watercolours** including a Silk Road watercolour of flowering water lilies, signed and inscribed, approximately 73cms x 34cms; **another** depicting a maiden in a garden, approximately 60cms x 34cms; **two landscapes** and **another** with birds and foliage. (5)
£50-100



- 660 ***Withdrawn***



- 661 **Six various Chinese mid Century watercolours**, including two stamped 'Silk Road', including ducks, birds landscapes and flowers, all unframed, the largest 34cms x 68cms; and **a small printed silk scroll** boxed. (9)
£50-100



All lots are subject to a Buyer's Premium of 25% plus VAT (30% in total)

Christmas Country House & Fine Interiors Auction, 1st Dec, 2022 - 2nd Dec, 2022

- 662 **Follower of Zhao Shao'ang (Chao Shoa'ang 1905-1998): Eight mid Century Chinese watercolours**, depicting various birds flowers and insects, each stamped, some with inscriptions, approximately 31cms square, unframed. (8)
£100-200



- 663 **A Chinese Cultural Revolution porcelain plaque**, 1966-1978, stencilled and painted in black and iron-red with a symbolic strong arm holding a diminutive capitalist figure, inscribed in black, 36.5cms x 26cms.
£50-100



- 664 **An early 20th Century Chinese carved malachite figure**, depicting reclining female with a jardiniere of flowers, fitted wood base, 9.5cms.
£50-70



- 665 **Twenty-five 19th Century Chinese mother-of-pearl gaming counters**. (25)
£30-40



- 666 **A Chinese carved jade roundel**, pierced and carved with carp and water lilies, the pale green stone with rust inclusions, 6cms diameter.
£150-250



All lots are subject to a Buyer's Premium of 25% plus VAT (30% in total)

Christmas Country House & Fine Interiors Auction, 1st Dec, 2022 - 2nd Dec, 2022

- 667 **A Chinese cloisonne circular box and cover**, 19th Century, decorated with scrolling flowers and foliage on a turquoise ground, 19cms diameter.
£60-80



- 668 **A Chinese clarified amber bead necklace**, early 20th Century, formed by fifteen carved amber Buddha heads, two smaller and two plain oval amber beads, some with faint signatures to the reverse. approximate weight 417grams.
£400-600



- 669 **A small Chinese bronze gong or singing bowl**, with leather-covered beater and silk cushion stand, 10cms high.
£50-70



- 669A **A pair of 19th Century Chinese silk shoes** with embroidered dragon faces; and **another pair** with foliate decoration on a blue ground.
£40-60



- 670 **An Arita blue and white charger** decorated with a stylised leaping lion above waves, spur marks to base, 43cms diameter.
£200-300



All lots are subject to a Buyer's Premium of 25% plus VAT (30% in total)

Christmas Country House & Fine Interiors Auction, 1st Dec, 2022 - 2nd Dec, 2022

- 671 **A pair of Japanese Satsuma earthenware vases**, Meiji period, each decorated with dignitaries and attendants on a ground of mon, stylised flowers and foliage, 22cms. (2)
£150-200



- 672 **A Japanese Ko Kutani vase**, of ovoid form with double-scroll handles decorated with panels of figures in landscapes, seal mark, 30.5cms.
£60-80



- 673 **A Japanese Imari bowl**, Meiji period, well decorated with fan and scroll panels on an iron-red and gilt foliate scroll ground, the interior with flowers, 25cms diameter.
£60-80



- 674 **A Japanese porcelain vase**, late 19th Century, decorated with a finch, flowering prunus and peony, brown glazed border, lion mask and ring handles, mark in underglaze-blue, 31cms high.
£60-100



- 675 **Watanabe Seitei (1851-1916): a Japanese Kacho-ga diptych** depicting a sparrow perched on a long grass stem, oval red seal signature, 21cms x 31cms; and **another** depicting birds and winter blossom, 21cms x 31cms, unframed. (2)
£100-200



All lots are subject to a Buyer's Premium of 25% plus VAT (30% in total)

Christmas Country House & Fine Interiors Auction, 1st Dec, 2022 - 2nd Dec, 2022

- 676 **Utagawa Toyokuni ("Toyokuni I")**
(Japanese, 1769-1825)
A Scene from a Dramatic Performance,
woodblock print,
36 x 24.5cms, unframed.
£100-150



- 677 **Kusunada Utagawa (1786-1865): a woodblock print** depicting a Bijin attending a bonsai tree in snowy landscape, 43cms x 24.5cms, framed and glazed.
£70-100



- 678 **Toyokuni (19th Century Japanese): a woodblock diptych** depicting a kneeling Bijin with bonsai and stand, and a Bijin with standing figure, signed, each 35cms x 24.5cms, framed and glazed.
£150-200



- 680 **A Macintyre & Co William Moorcroft Tyg**, circa 1907, decorated with roses, tulips and forget-me-nots, three long handles, printed mark in brown, script signature in green, impressed shape number 427, pattern number M2862 in black, 20.5cms.
£400-600



- 681 **A Walter Moorcroft Clematis pattern flambe vase**, circa 1950, of pear shape, impressed marks, WM monogram in blue, 22cms.
£70-100



All lots are subject to a Buyer's Premium of 25% plus VAT (30% in total)

Christmas Country House & Fine Interiors Auction, 1st Dec, 2022 - 2nd Dec, 2022

- 682 **A Moorcroft Bougainvillea pattern vase**, circa 1955, of plain ovoid shape, cream ground, 25cms high, impressed marks, WM script monogram, 25.5cms.
£120-180



- 683 **A Moorcroft Clematis pattern vase**, circa 1950, of slender baluster form, decorated with a band of flowers on a cream ground, impressed marks, script monogram in green, 25cms.
£80-120



- 684 **A Moorcroft Crocus pattern small vase**, of pear shape, cream ground, impressed marks highlighted in blue, 13cms.
£50-80



- 685 **A Moorcroft Anemone pattern vase**, circa 1990, deep blue ground, impressed and WM script marks, 23cms.
£70-100



- 686 **A William Moorcroft powder blue ground vase**, circa 1918, decorated with two-lobed panels of flowers, script signature mark in green, impressed MOORCROFT, BURSLEM, ENGLAND, M25, 26cms.
£200-300



All lots are subject to a Buyer's Premium of 25% plus VAT (30% in total)

Christmas Country House & Fine Interiors Auction, 1st Dec, 2022 - 2nd Dec, 2022

- 687 **A Macintyre Moorcroft 18th Century pattern vase**, of baluster form, circa 1908, decorated with swags of roses and forget-me-nots, printed mark in brown, script signature in green, pattern number M2573 in black, 15.5cms.
£60-80



- 688 **A Moorcroft Hibiscus pattern powder bowl and cover**, 1950s with yellow and pink hibiscus on a deep blue ground, impressed marks, paper label 'Potters to the late Queen Mary', 17cms diameter; and **another** similar, 16.5cms diameter.
£100-150



- 689 **A matched pair of Moorcroft Wisteria pattern candlesticks**, circa 1925, graduated blue ground, impressed marks and script WM monogram in blue, 16.5cms high. (2)
£150-200



- 690 **A Moorcroft orchid pattern vase**, circa 1950, of shouldered ovoid form, picked out in coloured glazes on a graduated blue/green ground, impressed marks, script WM monogram in blue, 20cms.
£150-200



- 691 **A Moorcroft blackberry and leaf pattern vase**, circa 1930, with compressed body and tall trumpet neck, impressed marks including facsimile signature and Potters to HM The Queen, WM script monogram in blue, 15.5cms.
£100-150



All lots are subject to a Buyer's Premium of 25% plus VAT (30% in total)

Christmas Country House & Fine Interiors Auction, 1st Dec, 2022 - 2nd Dec, 2022

- 692 **A Moorcroft Clematis pattern ovoid vase**, circa 1950, graduated green ground, impressed marks including letter A, 12.5cms.
£70-100



- 693 **A pair of Bow shell form sweetmeat dishes or table salts**, circa 1755, each in white, moulded and applied with smaller shells and weed to the trefoil base, 12cms. (2)
£150-250



- 694 **A mid 18th Century delftware small charger**, decorated in cobalt blue with a Chinaman, rockwork and tree, 30cms diameter; a **pair of plates** decorated with pagodas and islands, trellis borders, 23.5cms; and **another** decorated with a figure on a bridge in a romantic Oriental landscape, 23.5cms. (4)
£100-150



- 695 **A Liverpool Delftware blue and white plate**, circa 1760, decorated with cockerels and Oriental flowers, 22cms diameter; **another** with Chinese figure decoration, 22cms diameter; and **an 18th Century Chinese blue and white plate**, with figure and pine tree in a landscape, 23.5cms diameter. (3)
£60-80



- 696 **A late 18th Century Worcester teapot**, of fluted barrel shape with black pendant swags, the cover with flower and leaf finial, hexagonal stand, 14cms high.
£150-250



All lots are subject to a Buyer's Premium of 25% plus VAT (30% in total)

Christmas Country House & Fine Interiors Auction, 1st Dec, 2022 - 2nd Dec, 2022

- 697 **A Flight period Worcester part tea service**, 1783-1792, each piece printed in underglaze-blue with the Royal Lily pattern, comprising: Teapot and cover, sucrier and cover, milk jug and slop bowl, script Flight and crescent marks in underglaze-blue.

£200-300



- 698 **A part composite Worcester Royal Lily pattern service** from Flight to Barr, Flight and Barr periods, comprising: five coffee cans, three saucers, teapot stand, two soup plates, four dinner plates, seven cheese plates, and two muffin dish stands, script, crescent, incised and impressed marks.

£200-300



- 699 **A Worcester and Coalport composite part Royal Lily pattern dinner, coffee and tea service**, including Flight period to Royal Worcester, comprising: spoon warmer, muffin dish, slop bowl, two sugar bowls, oval dish, soup plate, saucer dish, four plates, two teacups and saucers, two coffee cups and saucers, four demi-tasse and saucers, and three large saucers.

£100-150



- 700 **A Herculanum Liverpool porcelain part tea and coffee service**, circa 1805-1815, each piece printed in underglaze-blue with the standard 'Pagoda' pattern, gilt fruiting vine borders, comprising: milk jug, five coffee cans, three teacups, and five saucers, the jug with pattern number 484.

£60-100



- 701 **A pair of 19th Century Staffordshire flatback advertising figures 'MILK SOLD HERE'**, each in the form of a cow spill holder picked out in iron-red and gilt, with thistle-painted stump supports, the bases moulded and painted with 'MILK SOLD HERE', each 36cms high. (2)

£400-600



All lots are subject to a Buyer's Premium of 25% plus VAT (30% in total)

Christmas Country House & Fine Interiors Auction, 1st Dec, 2022 - 2nd Dec, 2022

- 702 **A pair of Dudson Brothers green Jasperware vases** of shouldered ovoid form, sprigged in white with classical figures allegorical of the arts, lion masks and pendant fruiting vine swags, impressed marks, 37cms high. (2)
£100-200



- 703 **A pair of Ridgway 'Jetware' black glazed cylindrical vases**, each decorated with colourful birds and flowers, on three lion mask feet, pattern number 5106, 26cms. (2)
£60-100



- 704 **Four Ridgway 'Jetware' moon flasks**, each with dolphin scroll handles, on rectangular base, enamelled on a black glazed ground with exotic birds, fish, ducks, herons and shells, songbirds and chinoiserie figures, 21.5cms to 22.5cms high. (4)
£100-150



- 705 **A Ridgway Jasperware cheese dome and stand**, sprigged in white with classical muses and trees within acorn and oakleaf borders, on a deep blue slip ground, acorn-shaped finial, 28cms high; and **another** sprigged with cows, sheep and dogs within fruiting vine borders on a pale blue slip ground, 23cms high. (2)
£100-150



- 706 **A Prattware jug 'Sportive Innocence' and 'Mischievous Sport'**, 14.5cms; **another** decorated with the Blacksmiths shop Gretna, 17.5cms; and **another** 'Admiral Duncan' and 'Captain Troller', 20cms. (3)
£30-50



All lots are subject to a Buyer's Premium of 25% plus VAT (30% in total)

Christmas Country House & Fine Interiors Auction, 1st Dec, 2022 - 2nd Dec, 2022

- 707 **A Minton Majolica ewer of barrel form**, 1862, applied with four cherubs to the shoulders, entwined branch handle, impressed marks including date cipher for 1862, 37cms.
£300-400



- 708 **Two Moore Brothers table baskets**, circa 1885, of leaf and branch form, applied with putti, cacti and hops, printed mark in brown, 19.5cms. (2)
£60-100



- 709 **An unusual Royal Doulton 'Titanian' ware bowl**, circa 1920, decorated in platinum lustre and gilt, with a fish amongst weeds, on a graduated blue ground, double angular lug handles, printed mark in black, incised shape number 1355, 29cms diameter, together with an associated gilt metal stand.
£100-150



- 710 **A Bernard Moore lustre vase**, 1905-1915, of ovoid form, decorated with green scrollwork on a deep blue ground, printed mark, 14.5cms.
£100-200



- 711 **A rare Maling bowl of 'Chelsea' shape, pattern number 5803, designed by Theo Maling**, circa 1932, printed and picked out in colours with anemones on a black wash ground, printed mark in black, script pattern number 5803, 21.5cms diameter.
£250-300



All lots are subject to a Buyer's Premium of 25% plus VAT (30% in total)

Christmas Country House & Fine Interiors Auction, 1st Dec, 2022 - 2nd Dec, 2022

- 712 **A modern fruit painted Royal Worcester teacup and saucer** by D.Fuller, decorated with peaches, cherries, grapes, blackberries and apples, gadroon gilt borders, signed, printed marks in black including 'Hand Painted Fruit Study', script black mark PS.SE in black, in original box.
£100-150



- 713 **Winston Churchill interest: a Foley 'Intarsio' coffee pot and cover** as a caricature of a young Winston Churchill. the cover with pattern number 3374, printed marks, 18cms high.
£200-300



- 714 **Nigel Creed for Kingsley enamels: a brass carriage clock** with four fruit-painted enamel panels in the Worcester style, signed N Creed, 8cms high with handle raised.
*Nigel Creed worked as a painter for Royal Worcester starting in 1963.
£200-300



- 715 **A Modern Royal Worcester fruit painted teapot and cover**, decorated by D.Fuller with peaches, cherries, blackberries and apple, signed, black printed mark including 'Hand Painted Fruit Study', PB.1 in black, 14.5cms high.
£200-300



- 716 **A modern fruit-painted Royal Worcester sugar bowl** by P English, decorated with peach, apple grapes and cherries, signed, printed mark in black including "Hand Painted Fruit Study", PR.1 in black script, 11.5cms diameter, boxed.
£100-150



Christmas Country House & Fine Interiors Auction, 1st Dec, 2022 - 2nd Dec, 2022

- 717 **A modern Royal Worcester fruit-painted plate** by P. English, decorated with peaches, grapes and raspberries, within a gadroon gilt border, signed, printed mark in black including 'Hand Painted Fruit Study', and initials PR.H in script, 27cms diameter, boxed.
£200-300



- 718 **A Royal Crown Derby Solid Gold Band 'Old Imari' pattern pricket candlestick**, 2011, printed marks in red including pattern number 1128 SGB and date MMXI, 32cms high.
£400-600



- 719 **A Royal Crown Derby 'Duchess Sweet Tray No. 1'**, 2005, decorated in 'Old Imari' pattern, number 1128, printed marks in red including pattern number and date MMVI, 30cms.
£100-200



- 720 **A Royal Crown Derby soup tureen, cover and stand**, 2008 and 2011, decorated in 'Old Imari' pattern 1128 SGD, printed marks in red including pattern number and dates MMVIII and MMXI, 23cms high, 37cms wide.
£380-620



- 721 **A Royal Crown Derby 'Old Imari' solid gold band soup ladle**, pattern 1128, gilt printed mark to base within design, 30cms.
£40-70



All lots are subject to a Buyer's Premium of 25% plus VAT (30% in total)

Christmas Country House & Fine Interiors Auction, 1st Dec, 2022 - 2nd Dec, 2022

- 722 **A Royal Crown Derby 'Old Imari' solid gold band Dolphin centrepiece**, 2005, printed marks in red including pattern number 1128 and date MMV, 30.5cms diameter, 14.5cms high.
£500-800



- 723 **A Royal Crown Derby 'Old Imari' twin-handled pedestal basket**, 1919, 2004, printed marks in red including pattern number 1128 and date MMIV, 29cms across, 11cms high.
£400-600



- 724 **A Royal Crown Derby 'Heather Basket'**, 2005, decorated in Imari pattern, printed mark in red including title, C2004 and date MMV, 28.5cms.
£250-350



- 725 **A Royal Crown Derby Comport 1821**, 2005 decorated in 'Old Imari' pattern 1128, printed marks in red including pattern number and date MMV, 30.5cms diameter, 11cms high.
£600-800



- 726 **A Royal Crown Derby 'Old Imari' octagonal bowl**, 2004, decorated with pattern 1128, printed marks including pattern number and date MMIV, 25.5cms diameter.
£300-500



All lots are subject to a Buyer's Premium of 25% plus VAT (30% in total)

Christmas Country House & Fine Interiors Auction, 1st Dec, 2022 - 2nd Dec, 2022

- 727 **A Royal Crown Derby 'Old Imani' footed cauldron and cover**, 2004, pattern 1128 SGB, with gilt metal swing handle, printed marks in red including pattern number and date MMIV, 17cms high.
£150-250



- 728 **Sunderland Lustre: a pink splash lustre jug** printed with the 'Mariner's Arms' and 'Glide on my back the summers tide' flanking a print of the cast iron bridge over the river Wear, 15.5cms; **a lustre mug** inscribed I.P. Winchester, Newcastle Pottery and marked within the print, and flanked by prints of 'The Sailor's Farewell' and the verse 'My Heart is Fixt....', 11.5cms; and a **small mug** printed with 'I do not know what man to trust....', pink lustre line borders, 8.5cms. (3)
£100-200



- 729 **A Dixon 'Garrison' pottery jug, circa 1820**, printed and enamelled with 'Sunderland Coal Trade' above an East View of the Iron Bridge over the River Wear, the reverse with Masonic emblems, the front with a bird and tree vignette, pink wash lustre ground, pink lustre borders, 22cms high.
£150-250



- 730 **A Dawson Low Ford Pottery creamware jug, circa 1800**, printed with a west view of the Iron Bridge over the Wear at Sunderland with the Lord Duncan ship (launched 1798) under the bridge, the reverse printed with 'Peace and Plenty' all picked out in coloured enamels, printed 'Dawson & Co Low Ford', black enamel lined rims, 19.5cms high.
£100-150



- 731 **A Newcastle Pottery (Addison, Falconer & Co) creamware frog mug, circa 1800**, printed in black with a three-masted sailing ship, the stylised waves incorporating the factory mark 'Newcastle Pottery', the interior with a hollow black painted frog, black line border, 12cms high; and a **Balls Deptford pottery Sunderland frog mug, circa 1860**, printed in black with 'Heave O'Cheerily men, Heave O'Heave Merrily round the Capstan', and a verse 'The Sailor Boy', the interior with brown decorated hollow frog, 12.2cms. (2)
£100-150



All lots are subject to a Buyer's Premium of 25% plus VAT (30% in total)

Christmas Country House & Fine Interiors Auction, 1st Dec, 2022 - 2nd Dec, 2022

- 732 **A North Eastern or Scottish pearlware dated puzzle jug**, inscribed in black with 'Come Gentlemen and try your skill..... 1838' with green lined borders and enclosed by stylised flowers and foliage, 19cms high.
£100-150



- 733 **A John Patton Newcastle lustre mug**, printed with 'Mariners Compass', inscribed 'JP Newcastle & North Shields', the reverse printed with a verse 'Be wise then Christian....), 12.2cms.
£80-120



- 734 **A splash lustre mug 'Thomas Young 1840'**, inscribed in black and printed with 'Young Cottagers' and a verse, picked out in colours between pink splash borders, 10cms.
£60-80



- 735 **A pair of Staffordshire Ridgeway 'Jetware' water bottles**, covers and stands, enamelled with dancing classical muses, enamelled pattern numbere 3/8454, 30cms high; and **another** enamelled with colourful spring flowers and insects, 30cms. (3)
£120-180



- 736 **A Cypriot Bichrome Ware Amphora**, Cypro-Archaic, circa 750-600 B.C, of ovoid form with double lug handle, decorated in brown and ochre with typical line work and roundels, 35cms high.
£800-1,200



All lots are subject to a Buyer's Premium of 25% plus VAT (30% in total)

Christmas Country House & Fine Interiors Auction, 1st Dec, 2022 - 2nd Dec, 2022

- 737 **Two Cypriot Cypro-Archaic small terracotta ewers**, each with single loop handle, 11.5cms and 14.5cms.
£100-150



- 738 **A late 18th Century Dutch Delft charger**, decorated in cobalt blue with phoenix, rockwork and flowers in the Chinese manner, 39cms diameter; and a **Chinese 'Imari' charger**, Qianlong, decorated in underglaze-blue, iron-red and gilding with growing flowers and butterfly, floral and bamboo borders, 39cms diameter. (2)
£100-150



- 739 **A Dutch Delft Peacock pattern charger**, mid 18th Century, ochre-edged rim, script A and feather mark in blue, 34.5cms diameter.
£100-150



- 740 **A mid 18th Century delft blue and white charger**, decorated with pagodas and trees on an island, within dotted cellular borders, 34.7cms diameter.
£100-150



- 741 **A Dutch Delft charger**, decorated in cobalt blue with growing flowers and treed by a fence, 34.5cms diameter.
£100-150



All lots are subject to a Buyer's Premium of 25% plus VAT (30% in total)

Christmas Country House & Fine Interiors Auction, 1st Dec, 2022 - 2nd Dec, 2022

- 742 **Five mid 18th Century Dutch Delft blue and white tiles**, decorated with naive drawings in cobalt of a church, cottages, sailing barge and a swan, each 13cms square.
£60-100



- 743 **A pair of late 19th Century Meissen oval porcelain plaques**, painted with a portrait of St Cecilia, the patron saint of musicians, and the Madonna and Child, crossed swords marks in blue, incised numerals, each in fitted brass frame with suspension loop, 14cms x 11cms. (2)
£400-600



- 744 **A Late 19th Century Austrian cold-painted terracotta deer head wall mount**, naturalistically decorated with inset glass eyes, within oak leaf and shield border, two open apertures for antlers, 48cms.
£300-500



- 745 **A Large Meissen Ewer emblematic of water**, circa 1860, after an original by J J Kandler, applied with Neptune, mermaid, hippocampi, and dolphins, painted with galleons at sea, the waisted neck painted with insects, reed moulded handle and base, cancelled crossed swords mark in blue, incised number 320, number 7 in iron-red, 64cms high.
£4,000-6,000



- 746 **A 19th Century Dresden mirrored wall bracket**, circa 1880, probably Helena Wolfsohn, with sectional scroll moulded frame surmounted by a cherub, the lower section a semi-basket form with wooden shelf, fixed to a wooden backboard, 75 x 36cms.
£500-700



All lots are subject to a Buyer's Premium of 25% plus VAT (30% in total)

Christmas Country House & Fine Interiors Auction, 1st Dec, 2022 - 2nd Dec, 2022

- 747 **A pair of late 19th Century French porcelain sweetmeat figures** in the form of lady and gallant in 18th Century dress, each with cornucopia on shaped oval bases, 30cms.
£100-150



- 748 **A late 19th Century French bisque porcelain figural group** of two startled maidens in medieval costume, circular base, 27.5cms.
£60-100



- 749 **A pair of late 19th Century Continental porcelain parrots**, after Meissen originals by J J Kandler, each well coloured with gilt collars, on tree stump and rocky bases, gilt anchor marks, 32cms. (2)
£300-400



- 750 **A pair of late 19th French ovoid vases in first-period Worcester style**, probably Samson, decorated with mirror-shaped panels of exotic birds and flowers on a blue scale ground, seal marks in blue, 23cms. (2)
£120-180



- 751 **Pasquale Cappelli Napoli: a large late 19th Century Naples Faience charger** decorated with a classical scene probably depicting Beatrice and the sun chariot, signed Pasquale Cappelli, Napoli, indistinct impressed mark, 51.5cms diameter.
£300-400



All lots are subject to a Buyer's Premium of 25% plus VAT (30% in total)

Christmas Country House & Fine Interiors Auction, 1st Dec, 2022 - 2nd Dec, 2022

- 752 **An early 20th Century Continental earthenware group** depicting a grandfather holding a swaddled baby, picked out in pastel colours on a rectangular base, 39cms.
£150-250



- 753 **A Royal Dux porcelain group of setters**, circa 1910, depicting two dogs flushing a pheasant, model number 2429, pink triangle applied mark impressed 'Royal Dux Bohemia', 47cms long, 23cms high.
£100-150



- 754 **V. Gossens. A French earthenware rectangular plaque**, painted with a fisher-girl seated on a headland and looking out to sea, signed, 20cms x 31cms.
£50-100



- 755 **An 18th Century wine glass**, with bell-shaped bowl and multiple series opaque twist stem, on plain conical foot, 17cms high; **a small ogee-shaped wine glass** with multiple series opaque twist stem and conical foot, 14cms; and plain **ogee-shaped wine glass** with folded conical foot, 14.5cms. (3)
£60-100



- 756 **A Georgian trumpet-shaped wine glass**, circa 1760, with teardrop stem and conical folded foot, 17.5cms high, 7.9cms wide at the rim, 9cms wide at the foot.
£60-80



All lots are subject to a Buyer's Premium of 25% plus VAT (30% in total)

Christmas Country House & Fine Interiors Auction, 1st Dec, 2022 - 2nd Dec, 2022

- 757 **A 19th Century Bohemian overlay glass goblet**, of deep 'U' shape with crenelated rim, knopped stem, overlaid in white on clear glass and cut with trellis panels, painted with pendant flowers, gilt scroll ground, 31.5cms high.
£200-300



- 758 **A pair of 19th Century green glass ships decanters**, of broad conical form, with fan cut bases, facet and hobnail bands, mushroom stoppers, 22cms high; and **another** in plain glass, 18cms high. (3)
£200-300



- 759 **A late 19th Century spun glass frigger**, possibly Sunderland, in the form of a three-masted sailing ship, a small ship and lighthouse, glass dome and wooden base, 31cms high.
£80-120



- 760 **An early 19th Century rummer** with 'lemon squeezer' base, moulded panel sides with etched swags, 13.5cms; **a heavy rummer** circa 1840, of bucket shape with cut panelled sides and blade knop stem, ground pontil mark, 15.5cms; and **a 19th Century cut glass stirrup cup** with faceted knop and terminal, 18cms (3)
£50-70



- 761 **In the manner of Louis Comfort Tiffany (1848-1933): Jack-in-the-Pulpit**, an Art Nouveau style iridescent glass vase, in the form of the American Woodland flower Arisaema Triphyllum (Jack-in-the-Pulpit), conical base, bears engraved signature, 24cms.
£100-150



All lots are subject to a Buyer's Premium of 25% plus VAT (30% in total)

Christmas Country House & Fine Interiors Auction, 1st Dec, 2022 - 2nd Dec, 2022

- 762 **A Lalique Candy Box 'Dinard' No. 78**, designed by Rene Lalique, of oval form moulded with roses, moulded mark R.LALIQUE, engraved No 78, 13cms (damaged).
£60-100



- 763 **A Lalique opalescent glass vase 'Poissons' No. 925**, designed by Rene Lalique, of globular form moulded with fish, moulded mark R.Lalique, 23cms (damaged).
£80-120



- 764 **A Lalique opalescent glass dish Poissons No. 3263**, with radiating fish and bubbles, moulded mark R.LALIQUE, 29.5cms diameter.
£200-300



- 765 **A Theodore Legras cameo glass vase**, with tall tapered neck and garlic mouth, conical base, decorated with trailing pendant leaves and flowers on a pink to yellow ground, engraved and etched mark, 57cms high.
£200-300



- 767 **William Lionel Wyllie**
(1851-1931)
Folio titled; "Six Original Drypoint-Etchings of the River Tyne and Coast"; viz:
"The Quayside", "North Shields", "Tynemouth", "High and Low Lights", "Cullercoats", and "St. Mary's Island and Lighthouse", pencil signed, drypoint etchings, 22 x 38cms and smaller, uniformly framed, and accompanied by their original folio, copy No.2.
£600-700



All lots are subject to a Buyer's Premium of 25% plus VAT (30% in total)

Christmas Country House & Fine Interiors Auction, 1st Dec, 2022 - 2nd Dec, 2022

- 768 **John James Audubon and Robert Havell jnr.**
(1785-1851) and (1793-1878)
"Le Petit Caporal, Falco Temerarius, Male",
engraving, hand-tinted, 1829,
from "The Birds of America", 4 vols., 1827-38, No15, Plate 75,
51 x 33cms, framed.
£600-900



- 769 **After Cecil Charles Windsor Aldin**
(1870-1935)
"The End of a Perfect Day" a dandy dinmont puppy,
limited edition lithograph, original label verso,
10 x 32cms, framed.
- Provenance: retailed by Mawson, Swan & Morgan of Grey
Street Newcastle, inventory No.496, dated 9.12.29.
£150-250



- 770 **After Eugene de Blaas**
(1843-1932)
The Love Letter,
crystoleum,
published by Franz Hanfstaengl,
25 x 15cms, framed.
together with;
European School
(19th Century)
Gathering Lilies,
crystoleum,
25 x 15cms, framed. (2)
£70-120



- 771 **19th Century British School**
"The Affectionate Wife"; a Regency lady bids her husband
farewell,
reverse glass hand-tinted engraving,
published by J. Hinton, of Oxford Street, London, December
1st 1808,
26 x 36cms, framed.
£50-100



- 772 **James Duffield Harding**
(1798-1863)
"Tynemouth, Northumberland",
signed and dated July 1827 within the plate,
hand-tinted lithograph, 1830,
27 x 38cms, framed.
£80-120



All lots are subject to a Buyer's Premium of 25% plus VAT (30% in total)

Christmas Country House & Fine Interiors Auction, 1st Dec, 2022 - 2nd Dec, 2022

- 773 **Paul Cezanne**
(French, 1839-1906)
"Le Dejeuner sur l'herbe",
colour lithograph,
33 x 38cms, framed.
£400-500



- 774 § **Charles "Snaffles" Johnson Payne**
(1884-1967)
"The Varmint Little Lady - On a Wiry Little 'Oss",
pencil signed, with pencil remarque depicting a rider and horse
jumping a dyke, c.1935,
colour lithograph,
50 x 64cms, framed.
£300-400



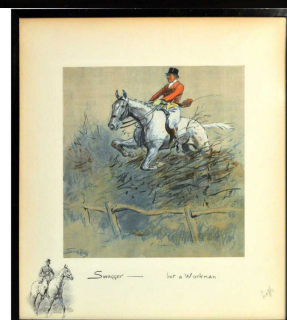
- 775 § **Charles "Snaffles" Johnson Payne**
(1884-1967)
"The Finest View in Europe",
pencil signed,
colour lithograph, with printed remarque,
42 x 67cms, framed.
£200-300



- 776 § **Charles "Snaffles" Johnson Payne**
(1884-1967)
"The Worst View in Europe",
pencil signed,
colour lithograph, with printed remarque,
42 x 67cms, framed.
£100-150



- 777 § **Charles "Snaffles" Johnson Payne**
(1884-1967)
"Swagger - But a Workman",
pencil signed,
colour lithograph, with printed remarque,
41 x 37cms, framed.
£150-250



All lots are subject to a Buyer's Premium of 25% plus VAT (30% in total)

Christmas Country House & Fine Interiors Auction, 1st Dec, 2022 - 2nd Dec, 2022

- 778 § **Charles "Snaffles" Johnson Payne**
(1884-1967)
"Roadsters",
hand-tinted lithograph,
48 x 89cms, framed.
£100-150



- 779 § **Alexander Millar**
(Scottish, b.1960)
"Pals",
signed, further inscribed by the artist verso, and dated 2003,
giclee print,
51 x 42cms, framed.
Provenance: The Art Cafe, 15/12/03.
£200-300



- 780 § **Alexander Millar**
(Scottish, b.1960)
"The Dismount",
signed, further inscribed by the artist verso, and dated 2003,
giclee print,
51 x 42cms, framed.
Provenance: The Art Cafe, 15/12/03.
£200-300



- 781 **William Lionel Wyllie**
(1851-1931)
The River Tyne and Coast; A series of six works, including
views of The Quayside Newcastle, North Shields, Tynemouth,
High & Low Lights at Shields, Cullercoats, and St. Mary's
Island,
pencil signed to the margin,
etchings,
16 x 37.5cms (5), 22 x 37.5cms (1) (plate size), uniformly
framed. (a group)
£400-600



- 782 **After Nicholas Pocock**
(1740-1821)
"The Capture of the 'Resistance' and 'Constance' by HMS 'San
Fiorenzo' and 'Nympe', 9 March 1797",
engraving, hand-tinted,
46 x 62cms, framed.
£100-200



All lots are subject to a Buyer's Premium of 25% plus VAT (30% in total)

Christmas Country House & Fine Interiors Auction, 1st Dec, 2022 - 2nd Dec, 2022

- 783 **Thomas Swift Hutton**
(1860-1935)
A Bright and Blustery Elevated Roof-Top View of Durham,
signed and dated 1926,
watercolour,
34 x 50cms, framed.
£200-300



- 784 **Victor Noble Rainbird**
(1887-1936)
"An Old Arch, Antwerps",
signed and titled,
watercolour,
32.5 x 22cms, framed.
£100-200



- 785 **Albert Henry Findley**
(1880-1975)
"Malines", Antwerp, Belgium, and "River Market, Amiens",
signed,
watercolour,
24 x 29cms, framed. (a pair)
£100-150



- 786 **§ Peter Allis**
(b.1944)
View of the Langdale Pikes, Cumbria,
signed,
watercolour,
37 x 53.5cms, framed.
£300-400



- 787 **§ Alexander Millar**
(b.1960)
Homewards Dance,
signed,
pencil drawing,
20 x 14cms, framed.
£300-400



All lots are subject to a Buyer's Premium of 25% plus VAT (30% in total)

Christmas Country House & Fine Interiors Auction, 1st Dec, 2022 - 2nd Dec, 2022

- 788 **John Duncan**
(c.1846- after1898)
Portrait of a young boy dressed in the "Little Lord Fauntleroy"
fashion, favoured at this time,
signed, circa 1900,
watercolour,
30 x 23cms, framed.
£80-120



- 789 **Benjamin Delacour**
(fl. 1818-1845)
"Madame Delacour"; three-quarter-length portrait wrapped in a
paisley shawl,
signed, circa 1830,
watercolour,
32 x 24cms, framed.
£80-120



- 790 **Early 19th Century English School**
Portrait of an 1830s lady with loose Biedermeier coiffeur,
pastel,
62 x 52cms, framed.



£200-400

- 791 **Helen Allingham RWS**
(1848-1926)
"The Gleaner",
signed with initials, titled and inscribed verso,
14.5 x 8cms, framed.
£150-250



- 792 **Miss S* Jollie**
(19th Century)
Four Edwardian Belle Epoque fashion studies; including one
demonstrating the S-bend silhouette corset at work beneath a
promenade dress, and two influenced by the revolutionising
fashions of Jeanne Margaine-Lacroix,
watercolour en grisaille heightened by Chinese white,
one signed 'S. Jollie', circa 1910,
36 x 24cms, 35 x 15cms, 37 x 17cms, and 27.5 x 22cms, each
framed.
£100-200



All lots are subject to a Buyer's Premium of 25% plus VAT (30% in total)

Christmas Country House & Fine Interiors Auction, 1st Dec, 2022 - 2nd Dec, 2022

- 793 **19th Century British School**
Fond Farewells at the Departure of the Horse-Drawn Carriage,

indistinctly signed,
watercolour,
28 x 38cms, framed.
£100-200



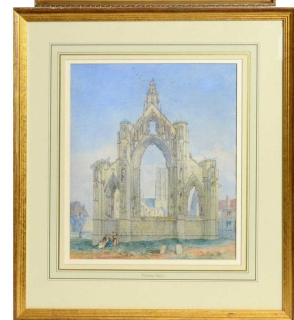
- 794 **C* H* Taylor Day**
(19th Century)
An Arts & Crafts Token of Affection; depicting a reed gatherer
above a sentimental verse,
signed and dated 1908,
watercolour, pen and ink, and gilt paint,
17 x 11cms, framed.
£80-120



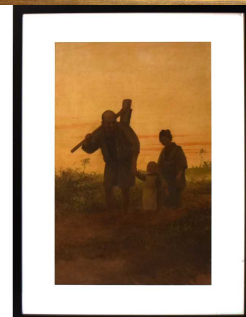
- 795 **Ralph Hedley**
(1848-1913)
Children gathering water from the fountain in Corbridge
marketplace,
signed and dated [18]80,
watercolour,
74 x 50cms, framed.
£600-800



- 796 **Thomas Miles Richardson Jnr.**
(1813-1890)
"Montrose Abbey",
signed,
watercolour,
36 x 29.5cms, framed.
£180-250



- 797 **J* S* Yamamoto**
(Japanese, early 20th Century)
Returning Home; a family walk at dusk,
signed,
Ukiyo-e watercolour,
48 x 31.5cms, framed.
£200-300



All lots are subject to a Buyer's Premium of 25% plus VAT (30% in total)

Christmas Country House & Fine Interiors Auction, 1st Dec, 2022 - 2nd Dec, 2022

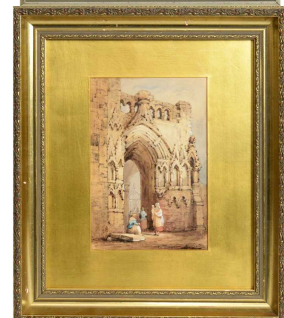
- 798 **Attributed to Myles Birkett Foster RWS**
(1825-1899)
"Freiburg",
signed with a monogram, further attributed and titled to the
mount,
watercolour,
22 x 32cms, framed.
£300-500



- 799 **John Atkinson [Staithes Group]**
(1863-1924)
The Woodland Path,
signed,
watercolour,
27.5 x 19cms, framed.
£80-120



- 800 **Samuel Prout**
(1783-1852)
An Ancient Ruined Gateway; Grand Tour view,
signed with a monogram and dated 1835, indistinctly titled
verso,
watercolour,
20 x 13.5cms, framed.
£100-150



- 801 **Thomas Miles Richardson, jnr. RWS**
(1813-1890)
Street Scene with Pony and Cart,
signed with initials,
watercolour,
25 x 20cms, framed.
£80-120



- 802 **Robert Jobling**
(1841-1923)
"On Whitby Sands",
signed and dated [19]14,
watercolour,
23.5 x 33cms, framed.
£200-300



Christmas Country House & Fine Interiors Auction, 1st Dec, 2022 - 2nd Dec, 2022

- 803 **In the manner of Myles Birket Foster**
(19th Century)
A family at the edge of a wood flying a kite,
watercolour,
29 x 62cms, framed.
£100-150



- 804 **§ Paul Kitchingman**
(b. 1947)
Rockpooling,
signed,
watercolour,
23 x 33cms, framed.
£180-280



- 805 **Emmanuel Costa**
(French 1833-1921)
A Family Rockpooling by the Mediterranean Sea,
signed,
watercolour,
21 x 50.5cms, framed.
£150-250



- 806 **George Edward Horton**
(1859-1950)
A sailing barge leaving harbour under tow,
signed,
watercolour,
25.5 x 41cms, framed.
£150-250



- 807 **Thomas Swift Hutton**
(1865-1935)
"Entrance to the Tyne",
signed,
watercolour,
16 x 23cms, framed.
£150-250



All lots are subject to a Buyer's Premium of 25% plus VAT (30% in total)

Christmas Country House & Fine Interiors Auction, 1st Dec, 2022 - 2nd Dec, 2022

- 808 **Thomas Swift Hutton**
(1865-1935)
"Whitley Bay",
signed,
watercolour,
18 x 36cms, framed.
£150-250



- 809 **Bernard Benedict Hemy**
(1845-1913)
Fishing boats on the Berwickshire coast,
signed lower right,
watercolour,
34 x 25cms, framed. (a pair)
£100-200



- 810 **Thomas Bush Hardy RBA**
(1842-1897)
"The Battle of Yarmouth Roads",
watercolour,
23 x 34cms, framed.
£150-250



- 811 **Willem Van de Velde, The Younger**
(1633-1707)
"The Dutch Fleet in the Thames",
signed with a monogram,
pencil and wash,
16.5 x 30.5cms, framed.
Provenance: Pasted catalogue description, and pen and ink
inscription verso "Bought by me from Sir Edward John Poynter,
PRA, April 1918. WR."
£400-600



- 812 **William Thomas Nichols Boyce**
(1857-1911)
Tynemouth Harbour Bar at Night,
signed and dated 1910,
watercolour en grisaille,
25.5 x 38cms, framed.
£80-120



All lots are subject to a Buyer's Premium of 25% plus VAT (30% in total)

Christmas Country House & Fine Interiors Auction, 1st Dec, 2022 - 2nd Dec, 2022

- 813 **William Thomas Nichols Boyce**
(1857-1911)
A lifeboat going to the aid of a ship in distress,
signed and dated 1896,
watercolour,
32 x 52cms, framed.
£200-300
- 814 **William Thomas Nichol Boyce**
(1857-1911)
Dawnbreak and Distant Lighthouse,
signed and dated 1905,
watercolour,
38 x 53cms, framed.
£200-300
- 815 **William Thomas Nichol Boyce**
(1857-1911)
"Crossing the Bar at the Entrance to the River Tyne",
signed and dated 1899,
watercolour,
Provenance: Dean Gallery Exhibition, Christmas 1992.
£200-300
- 816 **William Thomas Nichol Boyce**
(1857-1911)
Navigating Rough Tides,
signed and dated 1905,
watercolour,
51 x 71cms, framed.
£200-400
- 817 **William Thomas Nichol Boyce**
(1857-1911)
An hermaphrodite-brig and a herring boat,
signed and dated 1899,
watercolour,
69 x 46cms, framed.
£200-300

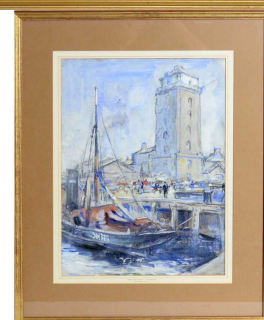


All lots are subject to a Buyer's Premium of 25% plus VAT (30% in total)

Christmas Country House & Fine Interiors Auction, 1st Dec, 2022 - 2nd Dec, 2022

- 818 **William Thomas Nichols Boyce**
(1857-1911)
Ships entering North Shields harbour,
signed and dated 1900,
watercolour,
33 x 51cms, framed.
£150-250
- 819 **Rowland Henry Hill**
(1873-1952)
"The Fish Quay, North Shields"; with the Old Low Light,
signed,
watercolour,
50 x 37cms, framed.
£300-400
- 820 **§ Peter Knox**
(b.1942)
"The Water of Tyne"; Newcastle Quayside at Dusk,
signed,
watercolour,
41 x 66cms, framed.
£200-300
- 821 **§ Peter Knox**
(b.1942)
"All Aboard! The Steam Packet"; at Newcastle Quayside,
signed,
watercolour,
42 x 61cms, framed.
£250-350
- 822 **Peter Knox**
(b.1942)
"Coming Alongside"; depicting a bustling Newcastle Quayside,

signed,
watercolour,
44 x 64cms, framed.
£200-300



All lots are subject to a Buyer's Premium of 25% plus VAT (30% in total)

Christmas Country House & Fine Interiors Auction, 1st Dec, 2022 - 2nd Dec, 2022

- 823 § **Peter Knox**
(b.1942)
"Banque at the Quayside"; with Newcastle High Level Bridge in the distance,
signed,
watercolour,
46 x 68cms, framed.
£250-350



- 824 **Peter Knox**
(b.1942)
"The Tyne - Coming Down River on the Tide",
signed and dated '04,
watercolour,
42 x 64cms, framed.
£280-320



- 825 § **Peter Knox**
(b.1942)
"Tyneside, Keels-Brigs-Steamer"; with Newcastle's High-Level Bridge and St Nicholas' Cathedral visible in the skyline,
signed,
watercolour,
43 x 64cms, framed.
£220-280



- 826 § **Peter Knox**
(b.1942)
The Crowded River Tyne with Newcastle City Skyline Beyond,
signed,
watercolour,
40 x 63cms, framed.
£200-300



- 827 **John Chambers**
(1852-1928)
"River Tyne",
signed,
watercolour,
33 x 78cms, framed.
£150-250



All lots are subject to a Buyer's Premium of 25% plus VAT (30% in total)

Christmas Country House & Fine Interiors Auction, 1st Dec, 2022 - 2nd Dec, 2022

- 828 **Victor Noble Rainbird**
(1887-1936)
"St Mary's Island",
signed and titled,
watercolour,
19.5 x 27cms, framed.
£100-200



- 829 **John Shapland**
(1865-1929)
Conwy, Wales; with castle and suspension bridge to the fore,
signed,
watercolour,
58 x 87cms, framed.
£150-250



- 830 **Thomas Bush Hardy RBA**
(1842-1897)
Winding in the Catch,
signed, indistinctly titled, and dated 1872,
watercolour,
40 x 68cms, framed.
£200-300



- 831 **Hachiro Nakagawa**
(Japanese, 1877-1922)
Old Fishing Boats on a Shore,
signed,
Ukiyo-watercolour,
28.5 x 42cms, framed.
£300-500



- 832 **John Henry Mole**
(1814-1886)
"Lynmouth",
signed and dated 1883,
watercolour,
24 x 37cms, framed.
Provenance: With J. Leger & Son, Bond Street London, 1949.
£200-300



All lots are subject to a Buyer's Premium of 25% plus VAT (30% in total)

Christmas Country House & Fine Interiors Auction, 1st Dec, 2022 - 2nd Dec, 2022

- 833 **John Falconar Slater**
(1857-1937)
Tidal Study; Waves Crashing Upon Rock,
signed lower right,
gouache,
55 x 76cms, framed.
£200-300
- 834 **George Edward Horton**
(1859-1950)
"Lowstaff [Lowestoft] Fishing Smack on the Tyne",
signed,
watercolour,
26.5 x 37cms, framed.
£100-200
- 835 **Hercules Brabazon Brabazon**
(1821-1906)
"An Interpretation of Turner's 'Calais Pier'",
signed with initials,
watercolour heightened with Chinese white,
23 x 33cms, framed.
£500-700
- 836 **Late 19th Century British School**
Battersea Tug Boat and Barge at Dusk,
watercolour,
33.5 x 50cms.
£80-120
- 837 **James Brown**
(19th Century British)
"The Coast at Howick with Cullernose Point",
signed 'Jas. Brown',
watercolour,
25.6 x 53.5cms, framed.
£100-200



Christmas Country House & Fine Interiors Auction, 1st Dec, 2022 - 2nd Dec, 2022

- 838 **Thomas Swift Hutton**
(1860 - 1935)
A pair of coastal views,
signed,
watercolour,
14.5 x 30cms, framed.
£120-180
- 839 **John Edgar Mitchell**
(1871-1922)
A Royal Procession by Barge Beneath Newcastle Tyne Bridge,

signed,
watercolour,
44 x 77cms, framed.
£300-450
- 840 **§ Walter Holmes**
(b.1936)
Tall Ships at Newcastle Quayside,
signed,
pastel,
52 x 69cms, framed.
£250-450
- 841 **§ Harry Hudson Rodmell**
(1896-1984)
A ship under full sail,
signed,
watercolour,
25 x 36cms, framed.
£150-250
- 842 **Thomas Swift Hutton**
(1865 - 1935)
"St Mary's Island",
signed,
watercolour,
15 x 30cms, framed.
£150-250



Christmas Country House & Fine Interiors Auction, 1st Dec, 2022 - 2nd Dec, 2022

- 843 **Thomas Swift Hutton**
(1865 - 1935)
"The Bathing Pool, Whitley Bay", Table Rocks,
signed,
watercolour,
15 x 30cms, framed.
£200-300



- 844 **Thomas Swift Hutton**
(1865 - 1935)
"Seaton Sluice, Nr Whitley Bay",
signed,
watercolour,
15 x 30cms, framed.
£200-300



- 845 **Charles Napier Hemy RA**
(1841-1917)
"The Schooner - Bad Weather Ahead",
signed,
watercolour,
43 x 66cms, framed.
£600-1,000



- 846 **Henry Andrew Harper**
(1835-1900)
Camel riders in the shadows below Mount Hermon,
signed and dated 1887,
watercolour heightened with bodycolour,
51 x 74cms, framed.
£400-700



- 847 **Edward Horace Thompson**
(1879-1949)
Misty Morning, English Lake District,
signed,
watercolour,
26 x 36.5cms, framed.
£200-300



All lots are subject to a Buyer's Premium of 25% plus VAT (30% in total)

Christmas Country House & Fine Interiors Auction, 1st Dec, 2022 - 2nd Dec, 2022

- 848 **Edward Horace Thompson**
(1879-1949)
Coniston in the Lake District,
signed,
watercolour,
26 x 36.5cms, framed.
£150-250
- 849 **Edward Tucker Jnr (Edward Arden)**
(1830-1909)
Panoramic Pastoral View of Sheep Grazing,
signed with pseudonym "Edward Arden",
watercolour,
34 x 52cms, framed.
£150-250
- 850 **Edward Horace Thompson**
(1879-1949)
Lake District View with Amethyst Hues,
signed with pseudonym "Donald A. Paton",
watercolour,
17.5 x 25cms, framed.
£150-250
- 851 **Edward Horace Thompson**
(1879-1949)
Ullswater in the English Lake District,
signed with pseudonym "Donald A. Paton",
watercolour,
30 x 60cms, framed.
£250-350
- 852 **19th Century British School**
"A View of Namur",
titled verso, circa 1815,
watercolour,
23 x 30cms, framed.
£80-120



All lots are subject to a Buyer's Premium of 25% plus VAT (30% in total)

Christmas Country House & Fine Interiors Auction, 1st Dec, 2022 - 2nd Dec, 2022

- 853 **Attributed to William Webster**
(Early 19th Century)
Two Indian landscape views,
watercolour,
14 x 19.5cms, and 15 x 18cms, framed. (a pair)
£100-200



- 854 **Alfred Fontville De Breanski**
(1877-1857)
Eventide Lake Views,
signed,
watercolour,
21.5 x 31.5cms, framed. (a pair)
Provenance: Morgan and Brown Art Dealers.
£150-250



- 855 **John Hodgson Campbell**
(1855-1927)
"Under the Trees and Over the Stones",
signed,
watercolour,
54 x 39cms, framed.
£150-250



- 856 **John Hodgson Campbell**
(1855-1927)
"Twixt Gloamin and Mirk",
signed, titled to the mount,
watercolour,
54 x 39cms, framed.
Provenance: bearing Arts and Crafts label of George Hughes,
Newcastle.
£150-250



- 857 **In the manner of Lady Beresford, Harriet Elizabeth Peirse**
(1790-1825)
"Ambleside" and "Elter Water", a pair of Regency Lake District
Views,
watercolour,
15 x 21cms, and 14.5 x 22cms, framed. (a pair)
£100-200



All lots are subject to a Buyer's Premium of 25% plus VAT (30% in total)

Christmas Country House & Fine Interiors Auction, 1st Dec, 2022 - 2nd Dec, 2022

- 858 **Alexander Carlyle Bell**
(fl.1847-1891)
"Mount Pilatus and Lake Lucerne",
signed,
watercolour,
32 x 49cms, framed.
£150-250
- 859 **Attributed to David Cox**
(1783-1859)
Two Young Boys Fishing by a Packhorse Bridge,
watercolour,
25.5 x 34cms, framed.
£150-250
- 860 **John Atkinson [Staithes Group]**
(1863-1924)
Loading The Hay Cart,
signed,
watercolour,
33 x 49cms, framed.
£200-300
- 861 **George Edward Horton**
(1859-1950)
A farmstead on the edge of a lake,
signed,
watercolour,
44 x 61cms, framed.
£150-250
- 862 **Frank Watson Wood**
(1862-1953)
Bamburgh Castle,
signed and dated 1934,
watercolour,
25 x 36cms, framed.
Provenance: MacDonald Fine Art, Newcastle, April 1987. With
original purchase receipt.
£150-250



All lots are subject to a Buyer's Premium of 25% plus VAT (30% in total)

Christmas Country House & Fine Interiors Auction, 1st Dec, 2022 - 2nd Dec, 2022

- 863 **John Edgar Mitchell**
(1871-1922)
Feeding the Calves; Golden Farmstead View,
signed,
watercolour,
51 x 67cms, framed.
£180-220
- 864 **T* H* Watanaby [Watanabe]**
(Japanese, early 20th Century)
Matsushima; a panoramic view,
signed,
Ukiyo-e watercolour,
33 x 48cms, framed.
£200-300
- 865 **A* Yoshida**
(20th Century)
A Cherry Orchard in Bloom,
signed,
Ukiyo-e watercolour,
31 x 49cms, framed.
£150-250
- 866 **A* Yoshida**
(20th Century)
Fields of Waterlily Pads at Dusk,
signed,
watercolour,
29 x 43cms, framed.
£100-200
- 867 **Isabella "Isa" Jobling (nee Thompson)**
(1851 - 1926)
Three illustrations for a poem entitled "The Miller's Daughter",
signed with the initials JT,
watercolour,
10 x 17cms, 15 x 11cms, and 16.5 x 10.5cms, framed.
Provenance: Dean Gallery, Newcastle.
Together with Marshall Hall's illustrated dictionary 'The Artists of Northumbria', second edition, 1982.
£200-300



All lots are subject to a Buyer's Premium of 25% plus VAT (30% in total)

Christmas Country House & Fine Interiors Auction, 1st Dec, 2022 - 2nd Dec, 2022

- 868 **Thomas Miles Richardson**
(1784-1848)
"Innsbruck from Hollinger Looking South" and "Lake Como",
each signed with initials,
En grisaille charcoal, graphite, and gouache,
27 x 36cms, and 28 x 40cms, framed. (a pair)
£300-500



- 869 **Elizabeth Fountaine**
(19th Century)
"Scene on the River Garry, Perthshire",
signed and dated 1861 lower right,
watercolour,
51 x 72cms, framed.
£150-220



- 870 **Henry John Sylvester Stannard RA**
(1870-1951)
Thatched cottages with chickens to the fore,
signed,
watercolour,
27.5 x 38cms, framed.
£250-350



- 871 **Harry James Sticks**
(1867-1938)
"A Lane Near Grange in Borrowdale", and "The Duddon Valley
- Lake District"; a pair of views,
signed,
watercolour,
9 x 11.5cms, and 8 x 12cms, framed. (a pair)
Provenance: Dean Gallery Newcastle, June 1985.
£70-120



- 872 **Charles Rowbotham**
(1856-1921)
"At Maone on Lake Garda Italy" and "Naples from
Camandole"; a pair of Italian views,
signed,
watercolour,
45 x 27cms, framed.
£150-250



All lots are subject to a Buyer's Premium of 25% plus VAT (30% in total)

Christmas Country House & Fine Interiors Auction, 1st Dec, 2022 - 2nd Dec, 2022

- 873 **David Thomas Robertson**
(1879-1952)
Blustery Moorland Journey by Horse and Cart,
signed,
watercolour,
35 x 53cms, framed.
£100-200
- 874 **David Thomas Robertson**
(1879-1952)
Dusk Ploughing with Heavy Horses,
signed,
watercolour,
34 x 52cms, framed.
£200-300
- 875 **John Atkinson [Staithes Group]**
(1863-1924)
Luminous ploughing scene with a pair of chestnut horses foiled
against an inky landscape,
signed,
watercolour,
27 x 39cms, framed.
£250-350
- 876 **Samuel Phillips Jackson R.W.S**
(1830-1904)
"Temple Goring and Waterfall", and "A View Near Streatley",
signed and dated, titled to label verso,
watercolour,
29 x 49cms, framed.
£150-250
- 877 **Alfred Wildsmith**
(1876-1936)
"Autumn in Picardy",
signed and dated 1919, further titled to the mount,
watercolour,
36 x 44cms, framed.
£100-200



All lots are subject to a Buyer's Premium of 25% plus VAT (30% in total)

Christmas Country House & Fine Interiors Auction, 1st Dec, 2022 - 2nd Dec, 2022

- 878 **Henry Enrico Coleman**
(Italian, 1846-1911)
Italian Ploughing Scene with Open Vista,
signed,
watercolour,
34.5 x 52cms, framed.
£200-400



- 879 **§ Alexander Millar**
(b.1960)
"Cycling in the Rain",
signed, titled verso,
pastel,
18 x 26cms, framed.
£400-600



- 880 **Henry Barlow Carter**
(1804-1868)
"Glen Dochart, Perthshire",
signed, further titled and dated 1858 to the mount,
watercolour,
11.5 x 16.5cms, framed.
£100-150



- 881 **Thomas Miles Richardson**
(1784-1848)
"Haughton Castle"; North Tyne, Northumberland,
signed and tilted to artist's label verso,
watercolour,
14 x 21cms, framed.
£200-300



- 882 **Attributed to David Cox**
(1783-1859)
A woodland track with horse and cart,
watercolour,
35 x 50cms, framed.
£200-300



All lots are subject to a Buyer's Premium of 25% plus VAT (30% in total)

Christmas Country House & Fine Interiors Auction, 1st Dec, 2022 - 2nd Dec, 2022

- 883 **In the manner of Thomas Miles Richardson Jr**
(19th Century)
"Lugano",
watercolour,
23 x 43cms, framed.
£100-150



- 884 **John Hodgson Campbell**
(1855-1927)
"Sentinels of the Fells in Silent Watch",
signed, mount dated 1909,
watercolour,
64 x 84cms, framed.
£250-350



- 885 **Charles Henry Slater**
(1820-1890)
Still Life with Pineapple and Black Grapes,
signed,
watercolour,
31.5 x 40cms, framed.
£120-180



- 886 **§ David Thomas Robertson**
(1879-1952)
Chestnut Horses at Dusk,
signed,
watercolour,
35 x 48cms, framed.
£150-250



- 887 **§ Pierre-Olivier Dubaut**
(French, 1886-1968)
Dynamism of a Horse-Drawn Carriage,
signed,
watercolour,
24 x 34cms, framed.
£100-200



All lots are subject to a Buyer's Premium of 25% plus VAT (30% in total)

Christmas Country House & Fine Interiors Auction, 1st Dec, 2022 - 2nd Dec, 2022

- 888 **George Rankin**
(1864-1937)
A Majestic Golden Eagle Foiled Against the Mountainous
Range of the Scottish Highlands,
signed,
watercolour,
43 x 29cms, framed.
£100-200
- 889 **§ Robert W. Milliken**
(Irish, 1920-2014)
Snipe at Flight Over Marshland,
signed,
watercolour,
49 x 63cms, framed.
£200-300
- 892 **George Sherwood Hunter RBA**
(Scottish, 1846-1919)
"Sketch - A Street Scene in Vitre",
signed, titled, and dated 1873 verso,
oil on canvas,
26 x 39cms, framed.
Provenance: George Hughes Fine Art.
Weetslade Fine Art, April 1987. With original purchase receipt.
£300-500
- 893 **John Falconar Slater**
(1857-1937)
"Newcastle 1929 Exhibition",
signed and dated 1929,
oil on board,
49 x 38cms, framed.
£300-400
- 894 **Manner of Henry Schafer**
(1854-1915)
In the Shadow of the Cathedral,
indistinctly signed,
oil on canvas,
44 x 33cms, framed.
£200-300



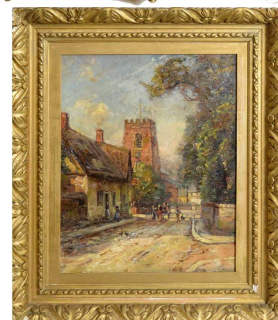
All lots are subject to a Buyer's Premium of 25% plus VAT (30% in total)

Christmas Country House & Fine Interiors Auction, 1st Dec, 2022 - 2nd Dec, 2022

- 895 § **Antoine Bouvard**
(French, 1870-1956)
Venice at Dusk,
signed,
oil on canvas,
23 x 32cms, framed.
£2,000-3,000



- 896 § **Herbert Royle** [Wharfedale Group]
(1870-1958)
Normandy Street Scene,
signed,
oil on canvas,
49.5 x 39cms, framed.
£400-600



- 897 **Alfred Montague**
(fl. 1830-1882)
"Saint-Rémy",
signed, titled verso,
oil on board,
34 x 24cms, framed.
£250-350



- 898 **John Falconar Slater**
(1857-1937)
Street scene depicting a row of houses,
signed,
oil on canvas,
54 x 38cms, framed.
£200-400



- 899 **Thomas Harrison Hair**
(1808-1875)
The Unicorn Inn, Newcastle Bigg Market,
signed and dated 1875,
oil on canvas,
63 x 75cms, framed.
£200-400

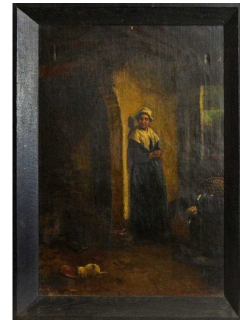


All lots are subject to a Buyer's Premium of 25% plus VAT (30% in total)

Christmas Country House & Fine Interiors Auction, 1st Dec, 2022 - 2nd Dec, 2022

- 900 **19th Century Dutch School**
The Little Companion; chiaroscuro interior scene with a cat drinking from a saucer of milk,
oil on canvas,
80 x 57cms, framed.
£200-300
- 901 **William Henry Midwood**
(fl.1867-1871)
The New Puppy; interior scene with a young family gathered around a dog,
signed,
oil on canvas,
69 x 90cms, framed.
£1,000-1,800
- 902 **J* Wait Clark**
(South Shields, fl.1880-1900)
The Musicians Workshop; sensitive portrait of a gentleman restoring a tuba,
signed,
oil on board,
39 x 47cms, framed.
£150-250
- 903 **Ralph Hedley**
(1848-1913)
An Attentive Audience; a little boy plays a recorder for his dog,
signed,
oil on canvas,
34.5 x 24cms, framed.
£1,000-2,000
- 904 **Ralph Hedley**
(1848-1913)
Interior of a Tavern; with three figures gathered around a table,

signed and dated 1907,
oil on board,
32 x 40cms, framed.
£1,000-1,500



Christmas Country House & Fine Interiors Auction, 1st Dec, 2022 - 2nd Dec, 2022

- 905 **Attributed to Kliment**
(19th Century Continental)
Interior of a Prague Cathedral,
oil on board,
37 x 27cms, framed.
£150-250



- 906 **Charles Hunt**
(19th Century)
"The Truant",
signed and dated [18]84,
oil on canvas,
70 x 90cms, framed.
£200-300



- 907 **Fernand Piet**
(20th Century French School)
Guarded Trees in Montmartre,
dated 1928,
oil on panel,
24 x 31cms, framed.
£150-250



- 908 **§ Peter Knox**
(b.1942)
"Christmas Post",
signed,
oil on board,
22 x 12cms, framed.
£150-250



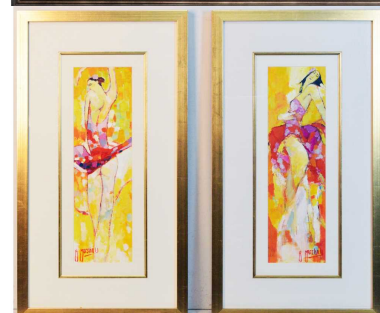
- 909 **§ Peter Knox**
(b.1942)
A Winter Wonderland in the City,
signed,
oil on canvas,
39 x 49cms, framed.
£300-500



All lots are subject to a Buyer's Premium of 25% plus VAT (30% in total)

Christmas Country House & Fine Interiors Auction, 1st Dec, 2022 - 2nd Dec, 2022

- 910 § **Peter Knox**
(b.1942)
"King's Cross - Flying Scotsman & Mallard",
signed and titled,
oil on board,
42 x 57cms, framed.
£400-600
- 911 § **Peter Knox**
(b.1942)
"Chippy - Harbour Fishery",
signed,
oil on board,
29.5 x 37.5cms, framed.
£250-350
- 912 § **Anthony Marshall**
(b.1952)
"Fiesta Fun", and "Flamenco Passion",
signed,
acrylic on board,
49 x 14.5cms, framed. (a pair)
£300-500
- 913 § **Walter Holmes**
(b.1936)
Snowfall on the Whin Sill and Crag Lough, Hadrian's Wall,
signed,
oil on board,
£150-250
- 914 **Alexander and John Runciman**
(1736-1785) and (1744-1768)
A Biblical Scene,
oil on canvas,
95 x 130cms, framed.
£3,000-4,000



Christmas Country House & Fine Interiors Auction, 1st Dec, 2022 - 2nd Dec, 2022

- 915 **Early 19th Century English School**
A Young Girl Discovering a Butterfly,
oil on panel,
20 x 17cms, framed.

£150-250



- 916 **Henry Hetherington Emmerson**
(1831-1895)
The Romance of Cullercoats Bay,
signed,
oil on board,
45.5 x 80cms, framed.
£400-600



- 917 **John Wallace**
(1841-1905)
Al Fresco Lunch at Jesmond Mill House,
signed and dated 1904,
oil on canvas,
39 x 50cms, framed.
£150-250



- 918 **William Kay Blacklock**
(1872-1924)
"A Corner of the Market Place, Richmond, Yorks",
signed, further signed, titled and dated 1895 verso,
oil on canvas,
39.5 x 29cms, framed.
£1,000-1,500



- 919 **Joseph Henry Sharp**
(American, 1859-1953)
The Dog House Drum Band; depicting a toddler and her dog,
signed,
oil on panel,
21.5 x 20cms, framed.
£250-350



All lots are subject to a Buyer's Premium of 25% plus VAT (30% in total)

Christmas Country House & Fine Interiors Auction, 1st Dec, 2022 - 2nd Dec, 2022

- 920 **Georgina "George" Lara**
(1840-1880)
A pair of domestic countryside views,
oil on canvas,
each 19 x 37cms, framed.
£800-1,200



- 921 **John Falconar Slater**
(1857-1937)
Crossing the Ford on Horseback,
signed,
oil on canvas,
49 x 75cms, framed.
£280-350



- 922 **G* J* Ford**
(19th Century British)
"The Smugglers", a pair of figural views depicting smugglers
hidden in the rocks of the coast,
titled to the frame,
oil on canvas,
each 25 x 39cms, framed.
Provenance: The Parker Gallery, London.
£600-800



- 923 **Henry Perlee Parker**
(1785-1873)
"Pitmen at Play",
signed and dated 1836,
oil on canvas,
75 x 62cms, framed.
Provenance: Exhibited at the Royal Academy, 1836.
£700-1,000



- 924 **19th Century British School**
Portrait of a Young Girl Holding a Bird from a Cat,
oil on board,
12.5 x 10cms, framed.
£80-120



All lots are subject to a Buyer's Premium of 25% plus VAT (30% in total)

Christmas Country House & Fine Interiors Auction, 1st Dec, 2022 - 2nd Dec, 2022

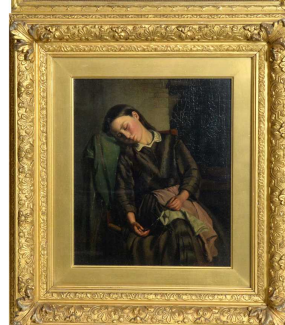
- 925 **19th Century French School**
Portrait of a Spanish Maja; three-quarter-length and foiled against a sunset,
oil on canvas,
29 x 19cms, framed.
£150-250



- 926 **Early 19th Century English School**
Portrait of a Young Boy Holding a Book; wearing skeleton suit and flounced collar,
oil on canvas,
60 x 49cms, framed.
£200-300



- 927 **Edward Charles Barnes**
(c.1830-1882)
The Slumbering Needlesmith; clothed in a repaired satin dress, her knitting resting on her knee,
signed,
oil on board,
32 x 27cms, framed.
£600-800



- 928 **19th Century British School**
"Portrait of Thomas Herbert of Scarbro, Shipowner" and "Betsey Wife of Thomas Herbert, Shipowner of Scarbro", each titled and dated 1858 verso,
oil on canvas,
75 x 61.5cms, uniformly framed. (a pair)
£500-900



- 929 **G* G* Provan**
(19th Century)
Portrait of a Lady in a Woven Shawl,
signed,
oil on canvas,
39 x 28.5cms, framed.
£300-500



All lots are subject to a Buyer's Premium of 25% plus VAT (30% in total)

Christmas Country House & Fine Interiors Auction, 1st Dec, 2022 - 2nd Dec, 2022

- 930 **After Michelangelo Merisi Da Caravaggio**
(17th/18th Century Continental School)
"Michelangelo da Caravaggio", after a self-portrait of the artist;
oil on canvas,
37.5 x 26.5cms, framed.
£1,500-2,500



- 931 **19th Century Italian School**
St Peter Holding the Keys to the Kingdom of Heaven,
oil on canvas,
38 x 27cms, framed.
£200-400



- 932 **Edward William John Hopley**
(1816-1869)
Little Nell Trent and Her Grandfather; based on the Charles Dickens characters,
signed and dated 1849,
oil on canvas,
90.5 x 70.5cms, framed.
£450-750



- 933 **Early 20th Century Continental School**
"Maria", depicting a nude Czech Gypsy Girl,
indistinctly signed,
oil on board,
43 x 33.5cms, framed.
£100-200



- 934 **After Jean-Baptiste Greuze**
(1725-1805)
"La Cruche Cassee" (The Broken Vessel),
oil on canvas,
110 x 85cms, framed.
£400-600



All lots are subject to a Buyer's Premium of 25% plus VAT (30% in total)

Christmas Country House & Fine Interiors Auction, 1st Dec, 2022 - 2nd Dec, 2022

- 935 **Carl Heuser**
(Austria, 1827-1892)
"A Tyrolese Peasant Woman" and "A Tyrolese Peasant"; a pair of character studies depicting 19th Century Tyrol inhabitants in regional dress, signed, oil on panel, 16 x 11cms, framed.
£600-800



- 936 **Robinson Elliott**
(1814-1894)
"Smuggler Resting", signed, titled, and dated April 6th 1835 verso, oil on canvas, 34 x 26.5cms, framed.
£250-350



- 937 **Felix Ziem**
(1821-1911)
Istanbul at Dusk, signed 'Ziem' lower right, oil on board, 14 x 23cms, framed.
£400-600



- 938 **John Falconar Slater**
(1857-1937)
St Marys Lighthouse, Northumberland, signed, oil on board, 28.5 x 43.5cms, framed.
£300-500



- 939 **J* Watson**
(19th Century British)
"Outward Bound" [Tynemouth], "North Shields" [Shipyards], "Tantallon Castle", and After the Storm, each signed and dated 1894/1895, oil on canvas, each approximately 29 x 37cms, framed. (4)
£200-300



All lots are subject to a Buyer's Premium of 25% plus VAT (30% in total)

Christmas Country House & Fine Interiors Auction, 1st Dec, 2022 - 2nd Dec, 2022

- 940 **Bernard Benedict Hemy**
(1855-1913)
The Low Lights North Shields,
signed,
oil on canvas,
24 x 34cms, framed.
£300-400



- 941 **Bernard Benedict Hemy**
(1844-1910)
A pair of marine views; one depicting the rowboat "Newcastle No.12",
signed,
oil on canvas,
33.5 x 49cms, framed. (a pair)
£500-800



- 942 **James Webb**
(1835-1895)
"Old Shoreham, Sussex",
signed,
oil on canvas,
24 x 50cms, framed.
£500-700



- 943 **Bernard Benedict Hemy**
(1855-1913)
Launching at the Break of Dawn; ships anchored close to shore,
signed,
oil on canvas,
44 x 59cms, framed.
£300-500



- 944 **John Falconar Slater**
(1857-1937)
Waves and Rocks in Moonlight,
signed,
oil on canvas,
34.5 x 54.5cms, framed.
£250-350



Christmas Country House & Fine Interiors Auction, 1st Dec, 2022 - 2nd Dec, 2022

- 945 **Walter Holmes**
(b.1936)
"Cliff Quay",
signed,
oil on board,
28.5 x 39cms, framed.
£200-300



- 946 **James Henry Butterworth**
(1868-1950)
"Peel Harbour",
signed, titled to a plaque on the frame,
oil on canvas,
39 x 73cms, framed.
£200-300



- 947 **John Falconar Slater**
(1857-1937)
Waves and Clouds; a sea study,
signed lower left,
oil on canvas,
19 x 29cms, framed.
£200-300



- 948 **John Davison Liddell**
(1859-1942)
"Table Rocks, Whitley",
signed lower left,
oil on canvas,
29 x 49cms, framed.
£150-250



- 949 **Bernard Benedict Hemy**
(1855-1913)
Dawn Break,
signed,
oil on canvas,
49 x 75cms, framed.
£280-350



All lots are subject to a Buyer's Premium of 25% plus VAT (30% in total)

Christmas Country House & Fine Interiors Auction, 1st Dec, 2022 - 2nd Dec, 2022

- 950 **Attributed to Thomas Buttersworth**
(1768-1842)
HMS Newcastle off the Coast at Tynemouth,
oil on canvas,
76 x 126cms, framed.
£2,000-4,000



- 951 **Dominic Serres RA**
(1722-1793)
Man-of-War off the Coast,
oil on canvas,
65 x 57cms, framed.
£8,000-12,000



- 952 **Robert Jobling**
(1841-1923)
North Shields Harbour,
signed and dated 1881-2,
oil on canvas,
75 x 55cms, framed.
£500-1,000



- 953 **Bernard Benedict Hemy**
(1855-1913)
South Shields with The Groyne in the Distance,
signed,
oil on canvas,
49 x 75cms, framed.
£200-300



- 954 **Bernard Benedict Hemy**
(1855-1913)
Sail Steamer in Harbour,
signed,
oil on canvas,
49 x 74cms, framed.
£400-600



All lots are subject to a Buyer's Premium of 25% plus VAT (30% in total)

Christmas Country House & Fine Interiors Auction, 1st Dec, 2022 - 2nd Dec, 2022

- 955 **Antonio de Simone Snr**
(Italian, 1851-1907)
Ritratto Dello Steam Yacht "Rosabelle",
signed,
gouache,
41 x 64cms, framed.
£800-1,200



- 956 **Antonio de Simone Snr.**
(Italian, 1851-1907)
"S.S. Charles",
gouache,
44 x 64cms, framed.
£800-1,200



- 957 **Antonio de Simone Snr.**
(Italian, 1851-1907)
"S.Y. Alberta",
titled,
41 x 64cms, framed.
£800-1,200



- 958 **Antonio de Simone Snr**
(Italian, 1851-1907)
"Iron Screw Steamer 'Enchantress' of Sunderland",
gouache,
37 x 61cms, framed.
£800-1,200



- 959 **§ Roger Desoutter**
(b.1923)
"Asta" Under the Power of Steam Tug "Reliant",
signed,
oil on canvas,
75 x 113cms, framed.
£400-600



All lots are subject to a Buyer's Premium of 25% plus VAT (30% in total)

Christmas Country House & Fine Interiors Auction, 1st Dec, 2022 - 2nd Dec, 2022

- 960 **Samuel Walters**
(1811-1882)
The Liverpool Schooner Betsey Hall in Two Positions; Taking
on Her Pilot off the Skerries, Anglesey,
signed and dated 1835,
oil on canvas,
55 x 80cms, framed.
Provenance - Christies 7 Oct 1993 - £13,200
£2,000-3,000



- 961 **William John Huggins**
(1781-1845)
A Dutch Man-of-War at Full Mast,
signed,
oil on canvas,
89 x 134cms, framed.
£7,000-10,000



- 962 **Bernard Benedict Hemy**
(1855-1913)
Fishing off the Coast,
signed,
oil on canvas,
49 x 75cms, framed.
£200-300



- 963 **John Livingstone**
(fl.1840-1850)
"The Steamship 'Brigand'",
signed and dated 1843,
oil on canvas,
64 x 104cms, framed.
£500-1,000



- 964 **§ Walter Holmes**
(b.1936)
Warships at Full Steam,
signed,
oil on canvas,
39 x 60cms, framed.
£200-300



All lots are subject to a Buyer's Premium of 25% plus VAT (30% in total)

Christmas Country House & Fine Interiors Auction, 1st Dec, 2022 - 2nd Dec, 2022

- 965 **William Thornley**
(1857-1935)
A Busy Continental Port,
signed,
oil on canvas,
29 x 43.5cms, framed.
£400-600



- 966 **George Blackie Sticks**
(1843-1948)
Dunstanburgh Castle,
signed and dated 1847,
oil on canvas,
24 x 44cms, framed.
£500-800



- 967 **Andrew James Sticks**
(1855-?)
"On the Whitby Coast Before a Shower", and "Entrance to the Tyne"; a pair of marine views,
signed and dated 1885,
oil on canvas,
each 24 x 34.5cms, framed. (2)
£500-800



- 968 **James John Wilson Carmichael**
(1800-1868)
Ships off the Coast at Dover,
signed and dated 1862,
oil on canvas,
66 x 99cms, framed.
£1,500-2,500



- 969 **After George Clarkson Stanfield**
(1828-1878)
A Continental Port at the Break of Dawn,
signed "C. Stanfield" lower left,
oil on canvas,
39 x 54cms, framed.
£200-300



All lots are subject to a Buyer's Premium of 25% plus VAT (30% in total)

Christmas Country House & Fine Interiors Auction, 1st Dec, 2022 - 2nd Dec, 2022

- 970 **William Adolphus Knell**
(1805-1875)
Shipping off the Coast,
signed,
oil on panel,
12.5 x 31.5cms, framed.
£200-300



- 971 **William Thornley**
(1857-1935)
Passing Storm and Safe Harbour,
signed,
oil on canvas,
24 x 39cms, framed.
£200-300



- 972 **William Anslow Thornley**
(1847-1907)
"Sunset - Fishing Boats Making for Port",
signed,
oil on canvas,
29 x 39cms, framed.
£200-300



- 973 **19th Century**
"Loch Carron [sic: Lock Carron]"; study of the four-masted iron
ship built in 1885,
signed, titled, and dated 1930,
oil on canvas,
39 x 50cms, framed.
£250-350



- 974 **Bernard Benedict Hemy**
(1855-1913)
Highland Coastal View with Pebbled Beach and Boats,
signed,
oil on canvas,
49 x 75cms, framed.
£400-700



Christmas Country House & Fine Interiors Auction, 1st Dec, 2022 - 2nd Dec, 2022

- 975 **Thomas Lucop**
(1834-1911)
Moonlit Coast,
signed and dated '79,
oil on canvas,
44 x 75cms, framed.
£200-300



- 976 **Bernard Benedict Hemy**
(1844-1910)
Fishing Boat BH701 Launching the Net,
signed,
oil on board,
35 x 49cms, framed.
£250-350



- 977 **Bernard Benedict Hemy**
(1844-1910)
The Lifeboat,
signed,
oil on canvas,
30 x 49.5cms, framed.
£200-300



- 978 **Duncan Fraser McLea**
(1841-1916)
Golden Hour View of Tynemouth,
signed and dated 1875,
oil on canvas,
39 x 59.5cms, framed.
£220-380



- 979 **John Wilson Carmichael**
(1800-1868)
"Battle of Trafalgar",
signed,
oil on canvas,
54 x 89.5cms, framed.
Provenance: Loaned to the Laing Art Gallery, Newcastle.
Bearing label for John Hughes of Newcastle to stretcher.
£5,000-7,000



All lots are subject to a Buyer's Premium of 25% plus VAT (30% in total)

Christmas Country House & Fine Interiors Auction, 1st Dec, 2022 - 2nd Dec, 2022

- 980 **Charles Rutherford**
(fl. late 19th/early 20th Century)
Crashing Waves and Rocks,
signed and dated [19]06,
oil on canvas,
75 x 126cms, framed.
£200-300
- 981 **19th Century Italian School**
Anglers at the edge of a lake with a mountain settlement
beyond,
oil on canvas,
indistinctly inscribed to the stretcher,
61 x 93cms, framed.
£150-300
- 982 **Frederick William Newton Whitehead**
(1853-1938)
Pastoral Scene with Canal Lock,
oil on canvas,
26.5 x 48cms, framed.
£150-300
- 983 **George Blackie Sticks**
(1943-1900)
"A Misty Evening Houghton Castle on the Tyne",
signed and dated 1876, further titled, dated, and addressed
verso,
oil on canvas,
44 x 36.5cms, framed.
£400-700
- 984 **Frits Van den Berghe**
(Belgian Expressionist and Surrealist, 1883-1939)
Cottage in Winter,
signed 'V. D. Berghe' lower right,
oil on canvas,
47.5 x 38cms, framed.
£300-500



All lots are subject to a Buyer's Premium of 25% plus VAT (30% in total)

Christmas Country House & Fine Interiors Auction, 1st Dec, 2022 - 2nd Dec, 2022

- 985 **John Falconar Slater**
(1857-1937)
Farmstead and Pond,
signed lower left,
oil on board,
19 x 29cms, framed.
£150-220



- 986 **Joseph Dixon Clark**
(1849-1944)
Golden Hour Sunset with Grazing Sheep,
signed lower left,
oil on canvas,
69 x 90cms, framed.
£400-600



- 987 **Frank Hider**
(1861-1933)
A Pair of Lakeland Views; Daylight and Dusk,
signed,
oil on canvas,
29 x 49cms, framed.
£200-300



- 988 **C* Thomlin**
(20th Century Dutch School)
A pair of Dutch canal views,
oil on boards,
19.5 x 40cms, framed. (a pair)
£150-250



- 989 **§ Stephen Warnes**
(b.1951)
Panoramic View of the Carlisle to Settle Railway,
signed and dated 1993/1994,
oil on canvas,
70 x 90cms, framed.
£300-400



All lots are subject to a Buyer's Premium of 25% plus VAT (30% in total)

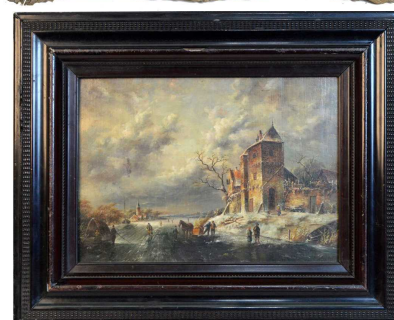
Christmas Country House & Fine Interiors Auction, 1st Dec, 2022 - 2nd Dec, 2022

- 990 **§ Stephen Warnes**
(b.1951)
A Winter's Day at Haltwhistle Railway Station; with an Alston bound NER passenger train at the platform, signed with monogram and dated 2002, oil on canvas, 39 x 49cms, framed.
£200-400
- 991 **John Falconar Slater**
(1857-1937)
The Winter Road; with snow-dusted landscape and horse-driven cart, signed, oil sketch on paper, 34 x 42.5cms, framed.
£180-250
- 992 **Ugo Valeri**
(Italian, 1874-1911)
Recumbent Hay Rakers; Impressionist view, signed, oil on canvas, 29 x 44cms, framed.
Provenance: MacDonald Fine Art, Newcastle, December 1986.
With original purchase receipt.
£400-600
- 993 **Robert Buchan Nisbet RSA RSW RBA RI**
(Scottish, 1857-1942)
"Wharfedale", signed, further titled to artist's label verso, oil on canvas, 34 x 52cms, framed.
Provenance: The Beaufort Gallery, Hexham, April 1986. With original receipt.
Framed by Robert MacIndoe, Glasgow.
£300-500
- 994 **§ "Braaq" Brian Shields**
(1951-1997)
Winter Landscape, signed and incorporating his sister's name "Ann" following his signature, oil on canvas, 44 x 59cms, framed.
£4,000-6,000



Christmas Country House & Fine Interiors Auction, 1st Dec, 2022 - 2nd Dec, 2022

- 995 **John Falconar Slater**
(1857-1937)
Hexham from Across the River Tyne,
signed,
oil on canvas,
34 x 39cms, framed.
£400-500
- 996 **Clarence Henry Roe**
(1850-1909)
Autumnal Country Lane,
signed,
oil on canvas,
49 x 67cms, framed.
£200-300
- 997 **19th Century Dutch School**
Wintertime; A Snowy Street Scene,
oil on panel,
19 x 27cms, framed.
£100-200
- 998 **William Davis**
(1812-1873)
"Irby Mill"; a windmill by a country lane with sheep grazing to
the fore,
signed,
oil on board,
18 x 29cms, framed.
Provenance: Loaned to Walker Art Gallery, Liverpool; 'Grand
Loan Exhibition of Pictures' 1886 and 'Historical Exhibition of
Liverpool Art' 1908
Loaned to Birkenhead Museum and Art Gallery.
- Reframed, with original picture backboard pasted with gallery
labels, a photograph of the mill, and manuscript notes.*
£800-1,200



Christmas Country House & Fine Interiors Auction, 1st Dec, 2022 - 2nd Dec, 2022

- 999 **William Davis**
(1812-1873)
"Pool at Moreton"; pastoral scene with young boy seated beside a pond
signed,
oil on board,
17 x 30cms, framed.
Provenance: Loaned to Walker Art Gallery, Liverpool; 'Grand Loan Exhibition of Pictures' 1886 and 'Historical Exhibition of Liverpool Art' 1908
Loaned to Birkenhead Museum and Art Gallery.



Reframed, with original picture backboard pasted with gallery labels and manuscript notes.

£1,200-1,800

- 1000 **Alfred de Breanski Jnr**
(1877-1945)
Awe-Inspiring Mountains and Rushing Stream,
signed,
oil on canvas,
50 x 75cms, framed.
£800-1,200



- 1001 **§ Reginald Grange Brundrit**
(1883-1960)
"Brough Fells" and The Valley,
signed,
oil on board,
24 x 34cms, framed.



Provenance: Royal Academy Exhibition 1944.
£300-400

- 1002 **Charles Rennie Dowell**
(Scottish, 1876-1935)
A Shady Spot Betwixt Dappled Light,
signed,
oil on canvas,
59 x 49cms, framed.
£280-350



All lots are subject to a Buyer's Premium of 25% plus VAT (30% in total)

Christmas Country House & Fine Interiors Auction, 1st Dec, 2022 - 2nd Dec, 2022

- 1003 **Thomas Earl**
(1810-1876)
"Rabbit Warren on the Yorkshire Coast",
unsigned,
oil on board,
35 x 42.5cms, framed.
Provenance: Christie, Manson and Woods (Christie's) number
stencil verso which corresponds with works sold on February
14th 1891, and the 'Catalogue of the Works and Collection of
that Talented Painter, the late Thomas Earl', to be sold at
auction by Christie, Manson and Woods (Christie's), 14th
February, 1891.
Leggatt Brothers label verso.
£180-220



- 1004 **Edward Train**
(fl. 1850 - 1880)
The Splendor of the Scottish Highlands; large scale panoramic
view, with kilt-clad figures to the fore,
signed and dated 1859,
oil on canvas,
83 x 123cms, framed.
£300-500



- 1005 **John Falconar Slater**
(1857-1937)
A Misty Upland River,
signed lower right,
oil on board,
78 x 52cms, framed.
£200-300



- 1006 **John Falconar Slater**
(1857-1937)
Vibrant Cottage Garden from the Prospect of a Terrace,
signed lower right,
oil on board,
55 x 79cms, in a gilt frame.
£300-500



All lots are subject to a Buyer's Premium of 25% plus VAT (30% in total)

Christmas Country House & Fine Interiors Auction, 1st Dec, 2022 - 2nd Dec, 2022

- 1007 **H* Graham**
(Late 19th/early 20th Century British)
Driving Sheep over a Humpback Bridge,
signed lower right,
oil on canvas,
49 x 74cms, framed.
£80-120



- 1008 **§ Sergio Innocenti**
(b.1925)
"Barche Sul Lago",
signed lower right, further signed verso,
oil on canvas laid down on board,
23.5 x 34cms, framed.
£180-220



- 1009 **John Falconar Slater**
(1857-1937)
A Farmstead in the Misty Gloaming,
signed,
oil on board,
35 x 48cms, framed.
£200-300



- 1010 **George Blackie Sticks**
(1843-1948)
Panoramic View of the Scottish Highlands,
signed and dated 1887,
oil on canvas,
59.5 x 90cms, framed.
£2,000-4,000



- 1011 **George Blackie Sticks**
(1843-1936)
"Pass of Leny, Evening"; Stirling, Scotland,
signed and dated 1889, further signed, titled, and dated verso,
oil on canvas,
47 x 70cms, framed in gilt slip mount.
£1,500-2,500



All lots are subject to a Buyer's Premium of 25% plus VAT (30% in total)

Christmas Country House & Fine Interiors Auction, 1st Dec, 2022 - 2nd Dec, 2022

- 1012 **Paul Schaan**
(1857-1924)
The Sheep Drive,
indistinctly signed and titled,
oil on board,
33 x 23.5cms, framed
£150-200



- 1013 **David Bates**
(1840-1921)
Rural Idyll with Thatched Cottage,
signed and dated 1871,
oil on canvas,
34 x 52cms, framed.
£400-600



- 1014 **James Peel**
(1811-1906)
A Haywain Crossing a Tranquil Stream,
signed,
oil on canvas,
24 x 37cms, framed.
£400-600



- 1015 **John Holland**
(fl. 1831-1879)
"The Royal Oak Inn",
signed,
oil on canvas,
60 x 90cms, framed.
£400-700



- 1016 **J* Held**
(18th Century Dutch School)
The River Crossing,
oil on canvas,
36 x 62cms, framed.
£400-500



All lots are subject to a Buyer's Premium of 25% plus VAT (30% in total)

Christmas Country House & Fine Interiors Auction, 1st Dec, 2022 - 2nd Dec, 2022

- 1017 **Early 19th Century British School**
Naive Regency Country House and Park View; with figures to the fore,
oil on board,
39 x 54cms, framed.
£80-120



- 1018 **Thomas Creswick RA**
(1811-1869)
"The Shrine",
signed, titled to the mount,
oil on board,
25 x 25cms, framed.
£300-400



- 1019 **John Falconar Slater**
(1857-1937)
The Scottish Highlands at Dusk,
signed,
oil on canvas,
49.5 x 75cms, framed.
£250-350



- 1020 **John Falconar Slater**
(1857-1937)
Dappled Light Illuminates a Horse-Drawn Carriage,
signed,
oil on board,
35 x 51cms, framed.
£300-400



- 1021 **John Falconar Slater**
(1857-1937)
Driving Through the Snow; a horse-drawn cart in a winter landscape,
signed,
oil on board,
55 x 79cms, framed.
£350-450



All lots are subject to a Buyer's Premium of 25% plus VAT (30% in total)

Christmas Country House & Fine Interiors Auction, 1st Dec, 2022 - 2nd Dec, 2022

1022 Attributed to Michiel Carree

(1657-1727)
"Sheep and Goats", landscape view,
signed,
oil on canvas,
54.5 x 69cms, framed.
£300-400



1023 Dixon Clark Snr.

(1849-1944)
Shepherding Home the Flock at Twilight,
signed and dated 1887,
58 x 90cms, framed.
£500-700



1024 Dixon Clark Snr.

(1849-1944)
The Watering Hole; cattle and sheep grazing,
signed,
oil on canvas,
60 x 90cms, framed.
£400-600



1025 Eugène Joseph Verboeckhoven

(1798-1881)
The Meeting of the Herd; a cow and goat greet two recumbent
sheep,
oil on panel,
33 x 41.5cms, framed.
£250-350



1026 John Falconar Slater

(1857-1937)
The Ebb and Flow of a River; panoramic landscape view,
signed,
oil on canvas,
75 x 126cms, framed.
£300-500



Christmas Country House & Fine Interiors Auction, 1st Dec, 2022 - 2nd Dec, 2022

- 1027 **Albert Durer Lucas**
(1828-1919)
Wild Heather,
signed under the mount,
oil,
16 x 12cms, framed, together with a brass picture easel.
£200-400



- 1028 **20th Century British School**
Still Life with Narcissi and Violet Tulips,
oil on canvas,
36.5 x 42cms, framed.
Provenance: Exhibited at the Royal Glasgow Institute of Fine Arts, 1957.
£150-250



- 1029 **§ Manner of Benjamin Blake**
(1807-1832)
A Pair of Bountiful Larder Still-Lives with Game,
oil on panel,
18.5 x 24cms, framed.
£100-200



- 1030 **18th Century Dutch School**
Chiaroscuro Floral Still Life with Dewy Garden Blooms,
indistinctly signed,
oil on canvas,
45.5 x 30.5cms.
£150-250



- 1031 **§ Hilda Ireland**
(Irish, 20th Century)
Still Life with Peony Roses,
signed,
oil on board,
49 x 39cms, framed.

£200-300



All lots are subject to a Buyer's Premium of 25% plus VAT (30% in total)

Christmas Country House & Fine Interiors Auction, 1st Dec, 2022 - 2nd Dec, 2022

- 1032 **18th Century British School**
Exaltations at the End of the Hunt, and Gun Dogs and Grouse,
oil on canvas,
28 x 39cms, framed. (a pair)
£600-1,000



- 1033 **J* Noirot**
(19th Century)
The Hunt Riding Out,
signed,
oil on board,
14.5 x 30.5cms, framed.
£150-250



- 1034 **§ Stephen Hawkins**
(b.1964)
Admiring the Winter's Morn, sportsmen before the shoot,
signed,
23 x 28cms, framed.
£200-300



- 1035 **§ Stephen Hawkins**
(b.1964)
"The Shoot",
signed,
oil on canvas,
23 x 28cms, framed.
£200-300



- 1036 **Stephen Hawkins**
(b.1964)
Frosty Morning Shoot,
signed,
oil on canvas,
39 x 49cms, framed.
£300-400



All lots are subject to a Buyer's Premium of 25% plus VAT (30% in total)

Christmas Country House & Fine Interiors Auction, 1st Dec, 2022 - 2nd Dec, 2022

- 1037 § **Stephen Hawkins**
(b.1964)
Winter Walk; depicting sportsmen and gundogs,
signed,
oil on canvas,
59 x 39cms, framed.
£320-480



- 1038 § **Stephen Hawkins**
(b.1964)
Spring Morning Shoot, with black Labrador and Border Terrier,
signed,
oil on canvas,
28.5 x 39cms, framed.
£250-350



- 1039 § **Stephen Hawkins**
(b.1964)
Spring Hike; a ramble with dogs,
signed,
oil on canvas,
28 x 38.5cms, framed.
£200-300



- 1040 § **Glyn Williams**
(b.1955)
"Early Morning Hunt" and "Morning Hunt",
signed,
oil on board,
each 19 x 24cms, framed.
£400-600



- 1041 § **Stephen Hawkins**
(b.1964)
"Early Risers",
signed,
oil on canvas,
29 x 39cms, framed.
£200-300



All lots are subject to a Buyer's Premium of 25% plus VAT (30% in total)

Christmas Country House & Fine Interiors Auction, 1st Dec, 2022 - 2nd Dec, 2022

- 1042 § **Glyn Williams**
(b.1955)
"The Hunt",
signed,
oil on board,
19 x 24cms, framed.
£200-300



- 1043 § **Glyn Williams**
(b.1955)
"The Dawn Meet" and "The Hounds",
signed,
oil on board,
each 19 x 24cms, framed.
£400-600



- 1044 § **Glyn Williams**
(b.1955)
"The Early Hunt",
signed,
oil on board,
19 x 24cms, framed.
£200-300



- 1045 **Wilson Hepple**
(1854-1937)
Chestnut Pony and Foal,
signed,
oil on canvas,
29 x 35cms, framed.
£100-200



- 1046 § **Wyllie Forbes**
(20th Century Scottish)
Salmon Fishing in the Scottish Highlands,
signed and dated 1985,
oil on canvas,
62 x 75cms, framed.
£1,000-2,000



All lots are subject to a Buyer's Premium of 25% plus VAT (30% in total)

Christmas Country House & Fine Interiors Auction, 1st Dec, 2022 - 2nd Dec, 2022

- 1047 **Late 19th Century British School**
 "Thunder" and "Fitz"; a pair of dog portraits,
 indistinctly signed and dated [18]71,
 oil on canvas,
 17 x 17cms, framed.
£100-200



- 1048 **Robert Watson**
 (1856-1920)
 A pair of Scottish pastoral studies; depicting sheep grazing,
 and Highland cows quenching their thirst,
 signed,
 oil on canvas,
 24 x 34cms, uniformly framed.
£500-800



- 1049 **William Walls RSA RSW**
 (Scottish, 1860-1942)
 A Pair of Silkie Hens,
 signed and dated 1902,
 oil sketch on paper,
 16 x 20.5cms, framed.
£80-120



- 1050 **J* E* Metcalfe**
 (19th Century)
 "Shoeing", After Sir Edwin Henry Landseer,
 signed,
 oil on canvas,
 90 x 70cms, framed.
£200-300



- 1051 **19th Century Continental School**
 We Three Kings; a trio of donkeys in bridles peep out from a
 stable,
 oil on canvas,
 36 x 46cms, framed.
£180-250



Christmas Country House & Fine Interiors Auction, 1st Dec, 2022 - 2nd Dec, 2022

- 1052 **§ Edgar Hunt**
(1876-1953)
Goats and Chickens Grazing,
signed and dated 1915,
oil on canvas,
27 x 37cms, framed.
£4,000-5,000



- 1055 Austin A35 Saloon motorcar, registration AA0702A, first registered 30.11.1956, 803cc petrol with 2-axle-rigid body, VIN A2S5HLS7138, engine no. 2HLS7138, colour maroon.
Note: this vehicle is currently not road worthy and cannot be driven away.

TO BE SOLD AT 10AM

We ask that all potential new bidders wishing to bid on a vehicle, please be aware that prior to the sale they will need to provide full ID in the form of a driving licence/passport and a copy of a utility bill.

Agents buying on behalf of a third party must have written authority from their principal clearly stating their authorisation to bid.

£1,500-2,500



- 1056 **Speri Amarone della Valpolicella Classico**, 2001, 14.5%vol 75cl, eight bottles.
£120-180



- 1057 **Chateau Montlau Bordeaux Superieur**, 1998, 12.5%ol 75cl, 24 bottles in two cases.
£100-200



All lots are subject to a Buyer's Premium of 25% plus VAT (30% in total)

Christmas Country House & Fine Interiors Auction, 1st Dec, 2022 - 2nd Dec, 2022

- 1058 **Chateau Segonnes Margaux, 1998, 12.5%vol 75cl, twelve bottles in a wooden case.**
£100-200



- 1059 **Chateau Segonnes Margaux, 1998, 12.5%vol 75cl, twelve bottles in a wooden case.**
£100-200



- 1060 **Chateau Lynch-Bages Grand Cru Classe Pauillac, 1985, 12.5%vol 75cl.**
£100-200



- 1061 **A mixed selection of wines, comprising: Chateau Laffite-Carcasset, 1970; Contino Rioja Reserva 1985 (double bottle); Chateau Giscours Margaux Grand Cru Classe, 1969; two bottles of Chateau Saint Bonnet, 1978; and Louis-Violland Montee Rouge Beaune Premier Cru, 1979. (6)**
£100-200



- 1062 **Laurent Perrier Grand Siecle champagne, grand cuvee n0.24, 12%vol 75cl.**
£50-80



All lots are subject to a Buyer's Premium of 25% plus VAT (30% in total)

Christmas Country House & Fine Interiors Auction, 1st Dec, 2022 - 2nd Dec, 2022

- 1063 **Laurent Perrier brut champagne**, La Cuvee, one bottle 12%vol 75cl, the other 12%vol 37.5cl. (2)
£40-60



- 1064 **Moët & Chandon Dom Pérignon Champagne Cuvée**, 1988, 12.5%vol 75cl, boxed.
£150-200



- 1065 **Moët & Chandon Grand Vintage champagne**, 2000, 12.5%vol 75cl, boxed.
£40-60



- 1066 **Heidsieck & Co Dry Monopole Champagne**, 1966, magnum 150cl.
£100-200



- 1067 **Moët & Chandon Dom Pérignon Champagne Cuvée**, 1969, 75cl.
£100-150



All lots are subject to a Buyer's Premium of 25% plus VAT (30% in total)

Christmas Country House & Fine Interiors Auction, 1st Dec, 2022 - 2nd Dec, 2022

- 1068 **The Macallan Highland Single Malt Scotch Whisky**, 10 years old, exclusively matures in selected sherry oak casks from Jerez, Spain, 20%vol 70cl, boxed.
£200-300



- 1069 Ainslie's 'Kings Legend' Finest Scotch Whisky, 1950s bottling (one bottle)
£150-250



- 1070 **Lagavulin Single Islay Malt Whisky**, 16 years old, 43%vol 70cl; **The Dalmore Highland Single Malt Scotch Whisky**, 12 years old, 40%vol 70cl; and **House of Commons Speaker Bercow's Single Malt Scotch Whisky**, 10 years old, 40%vol 70cl, all boxed. (3)
£100-200



- 1071 **Three bottles of The Famous Grouse whisky**, comprising: Ruby Cask, 40%vol 70cl; Smoky Black, 40%vol 70cl; and blended scotch whisky, 40%vol 100cl; **Highland Park Viking Honour Single Malt Scotch Whisky**, 12 years old, 40%vol 70cl; and **Laphroig Islay Single Malt Scotch Whisky**, 10 years old, 40%vol 70cl, all boxed except one. (5)
£100-200



- 1072 **Seven bottles of Whisky**, including: Talisker Skye; Glen Grant single malt The Major's Reserve; Ardmore single malt; Glen Grady 12 years old; and others, all boxed.
£100-200



All lots are subject to a Buyer's Premium of 25% plus VAT (30% in total)

Christmas Country House & Fine Interiors Auction, 1st Dec, 2022 - 2nd Dec, 2022

- 1073 Collection of whisky miniatures, many in sets; a miniature O'Gradys Classic Country Cream; and a bottle of Carlsberg large Prince of Wales Special Brew.
£40-60



- 1074 **Collection of whisky and other miniatures**, including: The Macallan 10 years old; The Balvenie 10 years old; Benromach 12 years old; Cardhu 12 years old; and others, some boxed.
£50-100



- 1075 **Bowmore Legend Islay Single Malt Scotch Whisky**, Millennium Edition, 40%vol 70cl, in tin case.
£80-120



- 1076 **Knockando Pure Single Malt Scotch Whisky**, 15 years old distilled 1985, 43%vol 70cl, in card tube; and Dimple Fine Old Original De Luxe Scotch Whisky, 15 years old, 43%vol 100cl, boxed. (2)
£80-120



- 1077 **Glenfiddich Caoran Reserve Single Malt Scotch Whisky**, 12 years old, 40%vol 100cl; **The Glenlivet Pure Single Malt Scotch Whisky**, 12 years old, 40%vol, 70cl; **The Famous Grouse Vintage Malt Whisky**, 1989, 12 years old, 43%vol 100cl; and **Aberlour Highland Single Malt Scotch Whisky**, 10 years old, 40%vol 70cl, all in tubes. (4)
£100-200



All lots are subject to a Buyer's Premium of 25% plus VAT (30% in total)

Christmas Country House & Fine Interiors Auction, 1st Dec, 2022 - 2nd Dec, 2022

- 1078 **The Glenlivet Pure Single Malt Scotch Whisky, 12 years old, 43%vol 100cl; Cardhu Single Malt Highland Scotch Whisky, 12 years old, 40%vol 100cl, boxed; Highland Park Single Malt Scotch Whisky, 12 years old, 40%vol, 70cl, in tube; Glen Turner Pure Malt Scotch Whisky, Special Reserve, 8 years old, in tin tube; and Jura Single Malt Scotch Whisky, 10 years old, 40%vol 70cl, boxed. (5)**
£100-200



- 1079 **Seven bottles of whisky, including: Glen Grant, Glen Trophy Special Reserve, Grant's, Glen Edward's and others; and a bottle of Drambuie. (8)**
£80-120



- 1080 **Th Macallan Single Highland Malt Scotch Whisky, 12 years old, 43%vol 100cl (1 litre), boxed.**
£500-800



- 1081 **The Macallan Single Highland Malt Scotch Whisky, 10 years old, 40%vol 70cl, boxed.**
£300-500



- 1082 **The Macallan Highland Single Malt Scotch Whisky, 10 years old, exclusively matures in selected sherry oak casks from Jerez, 40%vol 70cl, boxed.**
£200-300



All lots are subject to a Buyer's Premium of 25% plus VAT (30% in total)

Christmas Country House & Fine Interiors Auction, 1st Dec, 2022 - 2nd Dec, 2022

- 1083 **Macphails Rare Old Single Malt Scotch Whisky**, 30 years old, 40%vol 70cl, in decanter bottle, with certificate and box. **£80-120**



- 1084 **Jack Daniel's Single Barrel Tennessee Whisky**, 45%vol 70cl, in wooden crate; **Jack Daniel's 1905 Liege Belgium Gold Medal Tennessee Whisky**, 43%vol 100cl, boxed; **Gentleman Jack Rare Tennessee Whisky**, 40%vol 37.5cl; **a set of three The Balvenie whisky miniatures**, single barrel 15 years old, Doublewood 12 years old and Founder's Reserve 10 years old, boxed; and **Glenmorangie pair of whisky miniatures**, in tin. **£200-300**



- 1085 **Remy Martin Fine Champagne Cognac**, XO Excellence, 40%vol 70cl, boxed; and **Hennessy Extra Old Cognac**, The Original XO, 40%vol 70cl, boxed. (2) **£50-100**



- 1086 **Alnwick De Luxe 92 Vatted Rum**: twelve bottles, each 75cl 52.5%vol, boxed. **£600-800**



- 1087 **Alnwick Vatted Rum**: twelve bottles, each 75cl 40%vol, boxed. **£400-600**



All lots are subject to a Buyer's Premium of 25% plus VAT (30% in total)

Christmas Country House & Fine Interiors Auction, 1st Dec, 2022 - 2nd Dec, 2022

- 1088 Carnoustie Liqueur Special Scotch Whisky, reserved for and bottled by the sole agents MacSymon Limited, Liverpool, one bottle, probably 1940's.
£20-50



- 1089 **A Caucasian runner**, with repeated flower decoration within diamond-shaped cells, 396 x 98cms.
£200-300



- 1090 **A mid 20th Century Donegal carpet**, with bold floral design on a rust-red ground, 582 x 351cms.
£500-1,000



- 1091 **A silk North West Persian carpet**, the floral medallion surrounded by foliate scrolls on an ivory ground, 299 x 212cms.
£150-250



- 1092 **A Tetex carpet**, with stylized floral motifs, 393 x 286cms.
£700-1,000



All lots are subject to a Buyer's Premium of 25% plus VAT (30% in total)

Christmas Country House & Fine Interiors Auction, 1st Dec, 2022 - 2nd Dec, 2022

- 1093 **A Tetex carpet**, with stylized flowerhead design on dark blue ground, 289 x 193cms.
£300-400



- 1094 **An antique Tekke Torkman carpet**, with five rows of ten gul motifs, 290 x 204cms.
£700-1,000



- 1095 **A Zeigler Mahal carpet**, with repeated floral motifs, 300 x 175cms.
£300-400



- 1096 **An Isfahan (Ahmad) rug**, the central rosette surrounded by floral scrolls on red ground, 243 x 150cms.
£500-700



- 1097 **A pair of North West Persian carpets**, each with central rosette surrounded by floral scrolls on ivory ground, 227 x 144cms.
£500-800



All lots are subject to a Buyer's Premium of 25% plus VAT (30% in total)

Christmas Country House & Fine Interiors Auction, 1st Dec, 2022 - 2nd Dec, 2022

- 1098 **A Sarough carpet**, the central floral medallion surrounded by foliate scrolls, on red ground, 351 x 273cms.
£300-400



- 1099 **Lavar Kirman carpet**, the central rosette with bright floral scrolls, 522 x 392cms.
£2,000-3,000



- 1100 **Tabriz carpet**, the floral rosette surrounded by floral scrolls on rust-red ground, 400 x 292cms.
£400-600



- 1101 **Isfahan carpet**, the central rosette surrounded by floral scrolls on ivory ground, 405 x 301cms.
£350-450



- 1102 **Lavar Kirman carpet**, the central floral medallion surrounded by smaller medallions and scrolls on puce ground, 476 x 345cms.
£400-500



All lots are subject to a Buyer's Premium of 25% plus VAT (30% in total)

Christmas Country House & Fine Interiors Auction, 1st Dec, 2022 - 2nd Dec, 2022

- 1103 **Bidjar carpet**, the diamond-shaped medallion surrounded by flowerheads on an ivory ground, 338 x 219cms.
£300-400



- 1104 **Bidjar carpet**, the central medallion surrounded by repeated floral design, 350 x 226cms.
£300-400



- 1105 **Bidjar carpet**, the central medallion on floral diamond-shaped field with repeated design, 348 x 251cms.
£400-500



- 1106 **Lavar Kirman carpet**, with bold floral decoration, 321 x 213cms.
£300-400



- 1107 **A Heriz carpet**, with geometric design, 320 x 235cms.
£200-300



All lots are subject to a Buyer's Premium of 25% plus VAT (30% in total)

Christmas Country House & Fine Interiors Auction, 1st Dec, 2022 - 2nd Dec, 2022

- 1108 **A Kashan carpet**, the floral medallion surrounded by foliate scrolls on a red ground, 410 x 300cms.
£300-400



- 1109 **A Ghom carpet**, the central medallion surrounded by diamond-shaped medallions and foliate scrolls and beasts, 360 x 234cms.
£350-450



- 1110 **A Kirman carpet**, the central rosette surrounded by floral scrolls, 363 x 255cms.
£350-450



- 1111 **Lavar Kirman carpet**, decorated with deer in a landscape, 234 x 132cms.
£700-1,000



- 1112 **Lavar Kirman carpet**, the central rosette surrounded by scrolls, 300 x 147cms.
£300-400



Christmas Country House & Fine Interiors Auction, 1st Dec, 2022 - 2nd Dec, 2022

- 1113 **A Tetex carpet**, with quartered panels surrounded by diamond-shaped medallions, 226 x 122cms.
£350-450



- 1114 **A Mohajeran carpet**, with full floral design on red ground, 201 x 132cms.
£300-400



- 1115 **A Tabriz carpet**, the central medallion surrounded by foliate scrolls, on blue ground, 297 x 198cms.
£250-350



- 1116 **A Lavar Kirman carpet**, with full bold floral design, 375 x 278cms.
£400-600



- 1117 **An Isfahan carpet**, the floral medallion surrounded by foliate design, on ivory ground, 203 x 140cms.
£200-300



All lots are subject to a Buyer's Premium of 25% plus VAT (30% in total)

Christmas Country House & Fine Interiors Auction, 1st Dec, 2022 - 2nd Dec, 2022

- 1118 **A Mohajeran carpet**, with floral bouquets on red ground, 181 x 153cms.
£200-300



- 1119 **A Shirvan carpet**, with repeated design to field and border, 193 x 142cms.
£400-600



- 1120 **A Ghom carpet**, the floral medallion surrounded by foliate scroll, on red ground, 192 x 135cms.
£300-400



- 1121 **A Khorrasan runner**, with repeated design to ivory field, 198 x 73cms.
£100-200



- 1122 **A Bidjar carpet**, with stylized floral design on blue ground, 222 x 123cms.
£180-250



All lots are subject to a Buyer's Premium of 25% plus VAT (30% in total)

Christmas Country House & Fine Interiors Auction, 1st Dec, 2022 - 2nd Dec, 2022

- 1123 **A Qashqai carpet**, the small medallions surrounded by flower-head design, 247 x 173cms.
£200-300



- 1124 **A Mehraban carpet**, the central rosette surrounded by floral panels with vase decoration, 268 x 262cms.
£350-450



- 1125 **A Khamseh carpet**, with five diamond-shaped medallions surrounded by a flowerhead design, 257 x 148cms.
£250-350



- 1126 **A Tekke Turkman carpet**, with four rows of fourteen gul medallions, 320 x 238cms.
£400-500



- 1127 **A Qum runner**, with three floral medallions on a blue ground, 294 x 82cms.
£280-350



All lots are subject to a Buyer's Premium of 25% plus VAT (30% in total)

Christmas Country House & Fine Interiors Auction, 1st Dec, 2022 - 2nd Dec, 2022

- 1128 **A Tetex carpet**, with bold floral and tree design on a green ground, 258 x 246cms.
£400-500



- 1129 **An Isfahan carpet**, with floral scrolls on a red ground, 353 x 266cms.
£450-550



- 1130 **A Kashan carpet**, the floral medallion surrounded by floral scrolls, 400 x 279cms.
£400-600



- 1131 **A Khorrasan carpet**, with repeated floral scrolling design, 266 x 188cms.
£200-300



- 1132 **A Kashan carpet**, the central medallion surrounded by floral scrolls, on red ground, 340 x 229cms.
£300-500



All lots are subject to a Buyer's Premium of 25% plus VAT (30% in total)

Christmas Country House & Fine Interiors Auction, 1st Dec, 2022 - 2nd Dec, 2022

- 1133 **A Moud runner**, with repeated flowerhead design, 248 x 77cms.
£180-250



- 1134 **A Hadjijalili carpet**, with central rosette of floral scrolls, on red ground, 172 x 123cms.
£150-250



- 1135 **A Nahavand runner**, with floral medallions, bouquet and vases, 409 x 76cms.
£200-300



- 1136 **A Mohajeran carpet**, with bold floral designs on a red ground, 360 x 278cms.
£600-800



- 1137 **A Ghom carpet**, with shaped floral panels, 324 x 219cms.
£300-500



All lots are subject to a Buyer's Premium of 25% plus VAT (30% in total)

Christmas Country House & Fine Interiors Auction, 1st Dec, 2022 - 2nd Dec, 2022

- 1139 **Reid & Son, Newcastle upon Tyne: a Victorian mahogany bracket clock**, the painted roman dial with two train fusee movement, the case with undulating top and decorative carved foliate and scrollwork frieze and apron, on swept plinth base, with pendulum, 50cms high.
From the Leslie Southall Collection.
£400-600



- 1140 **Vincenti & Cie: a green Paris-style porcelain and gilt bronze mantel clock**, with enamelled arabic dial, the two train eight-day movement striking on the hour and half-hour, with outside count wheel, the backplate stamped with the trademark of the maker, and Serial No. 1911/58, the green porcelain waisted case with applied cast ormolu mounts, painted to the front with a courting couple and decorative gilt floral sides, with Sevres-style mark to base, with pendulum, 37cms high.
From the Leslie Southall Collection.
£150-250



- 1141 **Japy Freres: a French black marble mantel clock**, the eight-day movement striking the hours and half-hours on a bell with outside count wheel, the backplate stamped with the mark of Japy Freres and numbered 4780, with twin-tube mercury compensating pendulum, the black dial with gilt roman numerals centred by a visible escapement, with decorative cabochon bezel, the black marble case with glazed front to allow viewing of the pendulum, shaped mounts to the side and variegated marble to plinth base, ornate leaf and ring handles, gilt metal lion mask and paw feet, 59cms high.
From the Leslie Southall Collection.
£100-200



- 1142 **Raingo Freres: a large and impressive slate, gilt and bronze mantel clock**, the dial with enamelled roman numerals, two train movement striking on a bell on the hour and half-hour and with outside count wheel, the backplate with maker's mark and numbered 1875, the case surmounted by a bronze sculpture after Jean Francois Theodore Gechter depicting Quentin Durward saving Louis XI from a boar entitled 'Louis XI et Quentin Durward. W. Scott', the lower case section of canted rectangular form, with cabochon scroll acanthus dog's head, putto and fruiting vine design and stag head apron, 89.5cms high, with pendulum.
From the Leslie Southall Collection.
£1,000-2,000



Christmas Country House & Fine Interiors Auction, 1st Dec, 2022 - 2nd Dec, 2022

- 1143 **An ornate 19th Century ormolu mantel clock**, the enamelled roman dial with maker's name 'Heinrich Stach, Hannover', with two train movement striking on the hour and half-hour, with outside count wheel, the case modelled as a classical male playing a flute by a tree with dog at his side, the arched movement cover with hat and cape adornments, the platform base with classical scene of putto and animals, on circular feet, with glass dome and ebonised base, height of clock 36cms, height with glass dome 46cms, with pendulum.

From the Leslie Southall Collection.

£500-700



- 1144 **S. Marti & Cie: a 19th Century French black slate mantel clock**, the enamelled roman dial with visible brocot escapement, two train movement striking on the hour and half-hour, with outside count wheel, bimetallic pendulum, within a black slate case with bevelled glazed panel, on scroll supports and rectangular plinth base with brass feet, with pendulum, 40.5cms high.

From the Leslie Southall Collection.

£80-140



- 1145 **L. Charvet, Lyon and Japy Freres: a 19th Century red marble mantel clock**, the circular dial with roman numerals, two train movement numbered 1072/48, striking on the hour and half-hour, the shaped case with lion mask and ring handles, with pendulum and winding key, 38 x 24cms high.

From the Leslie Southall Collection.

£50-80



- 1146 **Paul Garnier, Paris: a Victorian rosso lepanto marble timepiece**, the circular roman dial with maker's name and address to centre, drum movement numbered 12923, in architectural case, 35cms high.

From the Leslie Southall Collection.

£100-200



- 1147 **Henry Marc, Paris: a 19th Century black slate and marble mantel clock**, the enamelled roman dial with visible brocot escapement, two train movement striking on the hour and half-hour, with maker's stamp and numbered 47702, with outside count wheel, the ornate architectural case having gilt metal classical plaque and engraved foliate detailing, on brass bun feet, 37cms high.

From the Leslie Southall Collection.

£80-120



Christmas Country House & Fine Interiors Auction, 1st Dec, 2022 - 2nd Dec, 2022

- 1148 **A 19th Century black slate and marble mantel clock and barometer**, the upper clock with enamelled roman dial and visible brocot escapement, fitted an eight-day two train movement striking on a bell on the hour and half-hour, with matching aneroid barometer dial below, decorative compass point centre, in a domed top black and green variegated marble slipcase, 43cms high.
From the Leslie Southall Collection.
£250-350
- 1149 **Bulle Patent: an electric clock**, with silvered arabic dial, associated glass cover and ebonised base, 38cms high.
From the Leslie Southall Collection.
£100-200
- 1150 **S. Marti & Cie: a 19th Century black slate and variegated marble mantel clock**, the enamelled roman dial with recessed centre, visible brocot escapement, the two train movement striking on the hour and half-hour, outside count wheel and numbered 2272, in drum-head case with spreading fluted body inset with marble, on conforming base, with pendulum, 45 x 27.5cms high.
From the Leslie Southall Collection.
£50-100
- 1151 **Moser of Paris: a 19th Century French black marble mantel clock**, the enamelled roman dial centred by visible brocot escapement, the two train French drum movement striking on the hour and half-hour, with count wheel strike, maker's mark to back, the case also with a lower rectangular enamelled calendar dial showing day, date and month, in rectangular case with re-entrant corners, with pendulum, 41cms high.
From the Leslie Southall Collection.
£300-500
- 1152 **Bulle: a 1930's Art Deco marble mantel clock**, the silvered arabic dial signed with retailer's mark of 'Lutz, Paris', the movement signed 'Modele XA' on the arabic dial, the movement escapement visible through the centre, marble case of swept and stepped tapered form, 53 x 28.5cms high.
From the Leslie Southall Collection.
£80-120



All lots are subject to a Buyer's Premium of 25% plus VAT (30% in total)

Christmas Country House & Fine Interiors Auction, 1st Dec, 2022 - 2nd Dec, 2022

- 1153 **Leroy, Paris: a late 19th Century French black slate and marble detail mantel clock**, with circular white enamel roman dial, centred by a visible brocot escapement, eight-day signed drum movement, numbered 613, with architectural case, with pendulum, 32 x 38cms.
From the Leslie Southall Collection.
£60-100



- 1154 **An ornate late 19th Century French bronzed spelter, marble and gilt metal mantel clock**, the enamelled arabic dial with two train French drum movement striking on a bell, the case modelled as a putto and marble plinth, on red marble base with swag pattern mounts, spirally fluted feet, with pendulum, 56cms high.
From the Leslie Southall Collection.
£200-400



- 1155 **A Victorian black slate three-dial calendar clock**, the main enamelled roman dial with visible brocot escapement, two train movement striking the hours and half-hours on a bell, calendar dial with moon phase, month, date and day subsidiary dials, and aneroid barometer, malachite inlays and engraved detail, with presentation inscription to plinth base, with separate black pedestal on brass feet, the pedestal 62cms high overall, with mercury pendulum.
From the Leslie Southall Collection.
£800-1,200



- 1156 **R. & C. (probably Richard & Cie): a late 19th Century gilt brass repeating carriage alarm clock**, with enamelled roman dial and subsidiary alarm dial, the platform lever escapement striking on a gong, maker's stamp to backplate, with key, height with handle lowered 14.5cms.
From the Leslie Southall Collection.
£150-200



- 1157 **F. Marti: an Art Deco marble and gilt metal clock garniture**, the clock with gilt arabic dial, bearing retailer's mark of 'H. Leplain, Viere', two train drum movement striking on the hour and half-hour, the case with figural finial depicting a young girl, 34cms high; together with a pair of tazzas of square section, 19cms high.
From the Leslie Southall Collection.
£50-100



Christmas Country House & Fine Interiors Auction, 1st Dec, 2022 - 2nd Dec, 2022

- 1158 **L. Frederick, Cork Street, W/Hampton: a large and impressive Victorian rosewood and mother-of-pearl inlaid wall clock**, with circular roman dial, two train movement with anchor escapement striking on a bell, the octagonal hood with fluted border inlaid with mother-of-pearl scrolls, circular glazed door with brass slip, the waist door with swan neck top flanked by canted corners, swept base, with weights and pendulum, 161cms high.
From the Leslie Southall Collection.
£400-600
- 1159 **A Vienna burr walnut and ebonised quarter chiming wall clock**, the enamelled roman dial with three train movement striking on two gongs, shell pattern bezel, the case with shaped mask cornice, above a single glazed door flanked by fluted pilasters, shaped fluted apron, 135cms high, with pendulum and weights.
From the Leslie Southall Collection.
£200-400
- 1160 **A Vienna burr walnut wall timepiece**, with enamelled roman dial, the case with urn-shaped finials above an arched cornice, shaped fluted apron, with pendulum and weight, 109cms high.
From the Leslie Southall Collection.
£80-140
- 1161 **A Vienna walnut cased wall clock**, c1900, with enamelled roman dial, subsidiary seconds dial, two train movement with deadbeat escapement, the back plate numbered 75442, the case with architectural pediment with mask and pierced scrollwork decoration, single glazed door flanked by split fluted and turned column uprights, reeded apron, with weights and pendulum, 134cms high.
From the Leslie Southall Collection.
£150-250
- 1162 **Gustav Becker: a large and impressive Vienna walnut wall clock**, the enamelled roman dial with subsidiary seconds dial, with bimetallic pendulum, the backplate numbered 1932755, striking on a single gong, the case with carved and turned finials above a shaped ogee cornice, arched glazed door flanked by roundels and split pilasters, folding mirrored sides with shelves, carved roundel and finial to apron, with pendulum and weights, 181cms high.
From the Leslie Southall Collection.
£200-400



All lots are subject to a Buyer's Premium of 25% plus VAT (30% in total)

Christmas Country House & Fine Interiors Auction, 1st Dec, 2022 - 2nd Dec, 2022

- 1163 **Wherly and Sheraton, Sunderland: a Victorian oak wall clock**, with painted roman dial and twin fusee movement by Winterhalder & Hoffmeier, striking on a gong, bi-metallic pendulum, the case with circular dial surround above a glazed pendulum case within scrollwork frame, caddy style apron, with foliate mounts, with pendulum, 124cms high.
From the Leslie Southall Collection.
£150-250



- 1164 **A Vienna ebonised wall clock**, the enamelled roman dial with two train movement and deadbeat escapement striking on the hour and half hour, the case with arched pediment with finials, shaped apron, with pendulum and weights, 125cms high.
From the Leslie Southall Collection.
£100-200



- 1165 **Plump & Bölken, Bremen: a German Black Forest carved oak wall clock**, the ebonised dial with enamelled roman numerals, two train spring driven movement, striking on a gong, the case decoratively carved in relief with leaves, grapes and centred by two lovebirds, 64cms high.
From the Leslie Southall Collection.
£150-200



- 1166 **Thos Goddard, London: a 19th Century rosewood and mother-of-pearl inlaid drop dial wall clock**, the circular painted roman dial with two train fusee movement and bell, the dial within an octagonal surround, with pendulum, 44 x 62cms wide.
From the Leslie Southall Collection.
£80-140



- 1167 **G & A Kuss, Newcastle upon Tyne: a Victorian rosewood and mother-of-pearl inlaid drop dial wall clock**, with painted roman dial and two train fusee movement, with bell, the circular dial surround above a viewing glass, flanked by carved brackets, single drop-down door to apron, with pendulum, 71cms high.
From the Leslie Southall Collection.
£80-140



All lots are subject to a Buyer's Premium of 25% plus VAT (30% in total)

Christmas Country House & Fine Interiors Auction, 1st Dec, 2022 - 2nd Dec, 2022

- 1168 **R. Marshall, Shotley Bridge: a Victorian mahogany drop dial wall clock**, the painted roman dial with two train fusee movement with gong, the case with circular dial surround and oval pendulum glass flanked by fruiting vine brackets, inter scroll design apron, 43cms diameter x 76cms high.
From the Leslie Southall Collection.
£80-120



- 1169 **Seth Thomas, Thomaston, Conn, USA: an American oak drop dial wall clock**, with painted roman dial, with outer calendar dial, 40 x 60cms.
From the Leslie Southall Collection.
£40-80



- 1170 **Griffiths, King Street, Westminster: a mid 19th Century mahogany wall timepiece**, c.1830, the painted roman dial with single fusee movement, in plain case, 48cms, with pendulum.
From the Leslie Southall Collection.
£150-250



- 1171 **Reynolds & Son, London: a Victorian mahogany wall timepiece**, with circular painted roman dial and single fusee movement, 57cms diameter, with pendulum.
£100-150



- 1172 **Litherland, Davies & Co., Liverpool: a 19th Century mahogany wall clock**, the circular painted roman dial with two train twin fusee movement striking on a gong, the case with architectural pediment and wavy border with shield, above Gothic style brackets around dial bezel, with hinged door to the lower section, 54 x 18 x 89cms wide, with pendulum and key.
From the Leslie Southall Collection.
£300-500



Christmas Country House & Fine Interiors Auction, 1st Dec, 2022 - 2nd Dec, 2022

- 1173 **B. Mitchell, Cockermouth: an inlaid mahogany longcase clock,** the painted roman dial with foliate spandrels centred with brass date boss '1829', with moon phase to the arch, two train movement with anchor escapement and bell, the case with fretwork frieze above arched glazed door, arched waist door centred by inlaid paterae, inlaid canted sides, panel base on bracket feet and brass finials, with weights and pendulum, 227cms high.

**From the Leslie Southall Collection.
£200-400**



- 1174 **Edward Stanton, London: a burr walnut and walnut longcase clock,** the 10in. brass dial with silvered roman chapter ring, matted centre with ringed winding hole, subsidiary seconds dial and date aperture, cherub and crown spandrels, two train movement with anchor escapement with bell, the case with ornate shell, flowerhead and leaf frieze, above a glazed square door flanked by spiral twist columns, the line inlaid waist door with lenticule panel base and bun feet, with weights and pendulum, 209cms high.

**From the Leslie Southall Collection.
£500-800**



- 1175 **W. Murray & Son, Bellingham: a large and impressive 19th Century month-going gong-striking mahogany longcase clock,** painted roman dial with subsidiary seconds dial, ornamental moon phase to the arch with outer dial inscribed 'Amplitude Ortive/Meridies/Amplitude Occasive', figural spandrels depicting the four seasons, two train movement with deadbeat escapement, the case with carved leaf frieze above an arched glazed door, flanked by spirally fluted columns, arched glazed waist door also flanked by spirally fluted columns, on panel base with double arch front panel, with weights and bi-metallic pendulum, 250cms high.

**From the Leslie Southall Collection.
£2,000-4,000**



- 1176 **T. Gaskell, Knutsford: an ornate mahogany and satinwood banded longcase clock,** the painted roman dial with foliate spandrels, moon phase to the arch, subsidiary seconds and date dials, the two train movement with anchor escapement and bell, the case with pierced and carved detail to the pediment, painted urn and scroll frieze above arched glazed door flanked by cluster columns, the centre section with triple arched waist door flanked by cluster columns, on chamfered and canted panel base and ogee bracket feet, with weights and pendulum, 246cms high.

**From the Leslie Southall Collection.
£400-600**



Christmas Country House & Fine Interiors Auction, 1st Dec, 2022 - 2nd Dec, 2022

- 1177 **A German/Austrian walnut longcase clock**, c.1900, with Art Nouveau style brass dial and silvered roman chapter ring, crescent moon spandrels and moon phase to arch, two train movement with deadbeat escapement striking on a gong on the hour and half-hour, the case with architectural cornice above cavetto frieze, the arched glazed door flanked by spirally fluted columns, the waist door with brass astragals and bevelled glass panels, on panelled and carved base, with weights and pendulum, 237cms high.

From the Leslie Southall Collection.

£200-300



- 1178 **A 19th Century inlaid mahogany striking domestic longcase regulator**, the circular silvered arabic dial with subsidiary seconds and hour dial, two train movement with deadbeat escapement and maintaining power, the case with swan neck pediment above circular glass panel flanked by fluted uprights, the centre section with triple arched doors centred by inlaid paterae and flanked by spirally fluted columns, vase inlaid panel base on ogee bracket feet, with weights and pendulum, 224cms high.

From the Leslie Southall Collection.

£600-900



- 1179 **Robert Marshall, Newcastle: an oak longcase clock**, the brass dial with decorative silvered roman chapter ring, the matted centre with nameplate, subsidiary seconds dial and date aperture, with Tempus Fugit boss to arch, the two train movement with anchor escapement and bell, the case with swan neck pediment, brass roundel and finial, above an arched glazed door flanked by fluted columns, shaped waist door on panel base and bracket feet, 240cms high, with weights and pendulum.

From the Leslie Southall Collection.

£300-400



- 1180 **A 20th Century German brass anniversary clock**, with enamelled arabic dial and three finials, with disc pendulum, the backplate stamped D.R.PNo. 144688, U.S.PNo. 751686, 25cms high, 29cms high under glass dome.

From the Leslie Southall Collection.

£30-50



- 1181 **A 20th Century German 400-day anniversary/torsion clock**, with enamelled arabic dial and three finials, the backplate stamped 'Made in Germany 122130', 25.5cms high, 29cms high under glass dome.

From the Leslie Southall Collection.

£40-60



All lots are subject to a Buyer's Premium of 25% plus VAT (30% in total)

Christmas Country House & Fine Interiors Auction, 1st Dec, 2022 - 2nd Dec, 2022

- 1182 **A 20th Century German brass 400-day anniversary/torsion clock**, with three finials, disc pendulum, the backplate stamped D.R.P. No. 144688, USP No. 751686, also numbered 50740, 25cms high, 27.5cms high under glass dome.
From the Leslie Southall Collection.
£40-60



- 1183 **Attributed to Gustav Becker for B.H. Abrahams: a 20th Century German 400-day anniversary/torsion clock**, with silvered arabic dial and three finials, the movement numbered 2007095, 27cms high, 31cms high under glass dome.
From the Leslie Southall Collection.
£40-60



- 1184 **Attributed to Gustav Becker for the B.H. Abraham Co: an early 20th Century domed top 400-day torsion/anniversary clock**, the silvered arabic dial with backplate stamped 'Serial No. 2070242', the case having four glass sides and brass presentation plaque 'From the Staff of St. Bede's Boys School, Jarrow, December 1912', 32cms high.
From the Leslie Southall Collection.
£100-200



- 1185 **Gustav Becker: a 20th Century 400-day anniversary/torsion clock**, the silvered arabic dial in ornate brass surround with pierced finials, the backplate numbered 2174666, with glass dome, overall height with dome 31cms high.
From the Leslie Southall Collection.
£60-90



- 1186 **Gustav Becker: a 20th Century 400 day anniversary/torsion clock**, the circular enamelled arabic dial with shaped finials, the movement numbered 2165550, 27cms high, 30cms high under dome.
From the Leslie Southall Collection.
£40-60



All lots are subject to a Buyer's Premium of 25% plus VAT (30% in total)

Christmas Country House & Fine Interiors Auction, 1st Dec, 2022 - 2nd Dec, 2022

- 1187 **Gustav Becker: a 20th Century brass 400-day anniversary/torsion clock**, with silvered arabic dial and fluted finials, disc pendulum, the backplate numbered 1901136, 28cms high, 31cms high under glass dome.
From the Leslie Southall Collection.
£60-100



- 1188 **Gustav Becker: a 20th Century brass 400-day anniversary/torsion clock**, with enamelled arabic dial and three finials, the backplate numbered 2268994, with disc pendulum, 25cms high, 29cms high under glass dome.
From the Leslie Southall Collection.
£50-80



- 1189 **Gustav Becker: a 20th Century brass 400-day anniversary/torsion clock**, with enamelled roman dial and three finials, the backplate numbered 2372776, with disc pendulum, 26cms high, 30cms high under glass dome.
From the Leslie Southall Collection.
£40-60



- 1190 **Style of Phillipp Haas: a 20th Century 400-day anniversary/torsion clock**, with circular enamelled dial and disc pendulum, the movement numbered 115126, with pierced frieze, 27cms high, 30cms high under glass dome.
From the Leslie Southall Collection.
£100-200



- 1191 **Style of Phillipp; Haas: an early 20th Century 400-day anniversary/torsion clock**, with circular arabic dial and three finials, Paul Hauck-style bimetallic pendulum, backplate numbered 30416, 24cms high, 39cms high under glass dome.
From the Leslie Southall Collection.
£60-100



All lots are subject to a Buyer's Premium of 25% plus VAT (30% in total)

Christmas Country House & Fine Interiors Auction, 1st Dec, 2022 - 2nd Dec, 2022

- 1193 **F.H. Tritschler, Carlisle: a mid 19th Century mahogany and line inlaid wheel barometer**, with onion-shaped top and apron, 93cms high.
£50-100



- 1194 **J. Howitt, Newark: a Victorian rosewood exposed tube thermometer with ivory register**, 89cms high.
£50-100



- 1195 **A 20th Century Danish mahogany barometer**, with two glass tubes and bowfront reservoir cover, with label for 'Jaeger Optic Copenhagen', 102cms high.
£40-60



- 1196 **A. Pastorelli, Cross Street, Hatton Garden: a mid 19th Century mahogany wheel barometer**, with swan neck pediment and brass finial, silvered registers, 100cms high.
£50-100



- 1197 **A rosewood exposed tube stick barometer**, with paper register and shaped cornice, bowfront reservoir cover, 96cms high.
£40-60



All lots are subject to a Buyer's Premium of 25% plus VAT (30% in total)

Christmas Country House & Fine Interiors Auction, 1st Dec, 2022 - 2nd Dec, 2022

- 1198 **W.S. Ferguson, Elgin: a mid 19th Century rosewood wheel barometer**, with swan neck pediment, 95cms high.
£50-100



- 1199 **Hedge & Banister, Colchester: a late Georgian ebonised bracket clock**, with painted roman dial, with twin fusee movement, striking on a bell, ebonised and brass inlaid lancet-shaped case, on brass ball feet, height 43.5cms.
£400-600



- 1200 **A Louis XV style bouille and gilt bronze mantel clock**, with enamelled roman dial, indistinct retailer's mark to centre, French drum movement striking on a gong, and numbered 31242/32, the ornate case with urn pattern finial and rococo-style ornamentation, with sunburst pendulum and winding key, 42cms high.
£200-300



- 1201 **Marti Et Cie: an early 20th Century inlaid mahogany mantel clock**, with enamelled arabic dial, two train French drum movement striking on a gong, the marquetry and satinwood banded arched case with brass finials and brass bun feet, 24 x 14.5 x 57.5cms high.
£60-100



- 1202 **A Victorian mahogany and brass inlaid mantel clock**, with painted roman dial, twin fusee movement striking on a gong, pierced grill sides, the arched case with fluted plinth on brass bun feet, with pendulum, 35cms high.
£100-200



All lots are subject to a Buyer's Premium of 25% plus VAT (30% in total)

Christmas Country House & Fine Interiors Auction, 1st Dec, 2022 - 2nd Dec, 2022

- 1203 **Maple & Co, Paris: a late 19th/early 20th Century French tortoiseshell and gilt brass mounted mantel clock.** in the Louis XIV taste, the cast brass dial set with white and blue enamel roman cartouche of shaped outline, the dialled centre with winged sphynx, with two train movement striking on a gong, the backplate stamped 'Maple & Co.' and numbered 1157 and 811, within a shaped tortoiseshell case, with swept caddy-style hood with four flame finials and leaf mounts, arched glazed door flanked by cast male caryatids, scroll leaf decoration to base, glazed sides, on urn pattern feet, with pendulum, 58cms high.
£400-600



- 1204 **R.H. Halford & Sons, London: a late 19th Century gilt brass quarter striking and carriage clock with repeat button,** the enamelled roman dial with outer arabic numerals, platform lever escapement striking on two gongs, the backplate signed 'R.H. Halford & Sons, 43 Fenchurch Street, London and Paris', also stamped 'C.V.' and numbered '31849', in a leather carrying case, height of clock with handle raised 17cms, with key.
£150-250



- 1205 **An aesthetic movement ebonised clock,** c.1880, in the manner of Lewis Foreman Day, attributed to Howell James & Co., London, with French eight-day gong striking movement by Japy Freres, the blue and white dial with arabic numerals indistinctly signed, the ebonised case of stilted form, with pendulum and winding key, 56cms high.
NB:
A very similar model of this clock is illustrated and described on the website of the Victoria and Albert Museum in London, CFirc.662-1972 (1999), with the design attributed to Day and the movement Howell James & Co.
£400-600



- 1206 **A Royal Geographic carved Geographical Society World clock,** with rotating terrestrial globe within a gilt metal chassis, on an ebonised moulded wooden base with Royal Geographical Society plaque, 22.5 (square) x 27cms high.
£150-250



- 1207 **A brass lantern wall clock with passing strike,** four posted case with pierced frets, single fusee movement with an anchor escapement, passing strike on the hour on a top-mounted bell, the arched brass dial with roman numeral chapter ring, arched with a disc inscribed 'Thomas Watts LAVENHAM' (Lavenham), the dial 18th Century, the movement late 19th Century, bun feet, with pendulum and key, 38.5cms high.
£200-300



All lots are subject to a Buyer's Premium of 25% plus VAT (30% in total)

Christmas Country House & Fine Interiors Auction, 1st Dec, 2022 - 2nd Dec, 2022

- 1208 **A late 19th Century Vienna walnut-cased wall clock**, with enamelled roman dial, signed Junghans, spring-driven movement, bimetallic pendulum, the case with broken arch pediment, 90cms high.with pendulum.
£40-80
- 1209 **Davies, Abergele: an ornate Welsh Victorian inlaid oak, mahogany and satinwood banded longcase clock**, with painted roman dial, subsidiary seconds dial and date aperture, the spandrels with figures and buildings, a river scene to arch with mother and child, two train movement with anchor escapement, the case with swan neck pediment above an arched glazed door flanked by columns, shaped waist door flanked by columns, on panel base with leaf carved front feet, 230cms high, with weights and pendulum.
£300-400
- 1210 **William Bell, North Shields: a handsome inlaid mahogany longcase clock**, the brass dial with silvered roman chapter ring, the centre dial with peripheral date markers and engraved with Venetian scrolls, name boss to arch, scrollwork spandrels, two train movement with anchor escapement and bell, the ornate case with swan neck pediment and brass finials, above an arched glazed door flanked by columns, arched waist door inlaid with shell and fan design, shell inlaid panel base on ogee bracket feet, with weights and pendulum, 246cms high.
£500-800
- 1211 **Of Nautical and Local History interest: a mid 20th Century mahogany grandmother clock**, made from the cabin doors of the yacht 'Sunbeam', the brass dial with silvered chapter ring, three train spring-driven movement by Dufa, chiming on five gongs, the case with caddy style hood above arched waist door, the panel base with attached brass plaque and inscription 'Made from cabin doors off yacht Sunbeam 1874-1929, which circumnavigated the World thrice and sailed 500,000 miles under Earl Brassey, and 32,000 under Sir Walter Runciman. Bart', with pendulum, 172cms high.
£100-200
- 1212 **Thomas Meekins, Amesbury: an 18th Century inlaid and oyster veneered walnut longcase clock**, the 11in. brass dial with silvered roman chapter ring, with matted centre, subsidiary seconds and date aperture inscribed 'Thomas Meekins, Amesbury, Fecit', mask and foliate spandrels, two train movement with anchor escapement, the case with ornate cherub and vase-pattern cornice above an oyster veneered frieze, square glazed front and sides with spiral twist cornice, the lower section with star inlaid waist door incorporating a lenticule, oyster veneered sides and star inlaid panel base on plinth, with weights and pendulum, 208cms high.
£1,500-2,500



All lots are subject to a Buyer's Premium of 25% plus VAT (30% in total)

Christmas Country House & Fine Interiors Auction, 1st Dec, 2022 - 2nd Dec, 2022

- 1213 **John Watson, Kirbymoorside: an oak and mahogany banded longcase clock**, the brass dial with ornate silvered roman chapter ring and centre decorated with rose and foliate design, subsidiary seconds dial and date aperture, silvered boss to arch engraved "TIME stayeth not", two train movement with anchor a statement, the case with Swan necked adamant and brass finials, arched glaze door, shaped waist door, panelled base, 224cms; with weights and pendulum.
£400-600



- 1214 **Matthews, Oswestry: a Victorian inlaid oak and mahogany banded longcase clock**, with painted roman dial, subsidiary seconds dial and date aperture, foliate spandrels and painted with church and river scene to arch, two train movement with anchor escapement, the case with swan neck pediment above glazed door flanked by fluted columns, shaped waist door flanked by fluted columns, panel base, 239cms high, with weights and pendulum.
£200-300



Christmas Country House & Fine Interiors Auction, 1st Dec, 2022 - 2nd Dec, 2022

- 1215 **The Mansion House Clock: a fine and historically interesting early 18th Century faux tortoiseshell year-going and striking longcase clock**, the brass dial with silvered roman chapter ring, matted centre with subsidiary seconds dial, the arch with silvered disc bearing the coat of arms of Newcastle upon Tyne, and two nameplates engraved 'Math. Featherstonhaugh, Esqre. Mayor' and 'Francis Rudston, Esqre. Sheriff', with six wheel train and anchor escapement, striking on a bell, complete with a pendulum and two large weights, the circular tapered weight weighing approx 26 kilogrammes, the rectangular weight weighing approx 31 kilogrammes, with swept caddy-style hood with brass finials, ogee frieze below and arched waist door flanked by columns, the waist with rectangular door, decorated overall with chinoiserie scenes of mounted figures in landscapes, pagoda and exotic birds, on plinth base, 274cms high.

Footnote: This clock was purchased during the Mayoral year of Matthew Featherstonhaugh, who was Mayor in 1711, and was a Freeman of the Merchants Company of Newcastle. He, together with Francis Rudston, Sheriff in the same year, grew wealthy from the vast amount of trade between Newcastle and London at the end of the 17th Century and the beginning of the 18th Century. From its arrival, the clock, which stood in the Mayor's chamber, was wound each year on New Year's night with great ceremony.

After a Council Committee meeting late in 1834 to discuss the building's heavy expenses, the Mansion House was abandoned in 1835. The clock, together with numerous other items from its collection, was sold at auction in 1837. The purchaser was Sir Alderman Dunn of Newcastle, and it remained in his family for almost 150 years, in various parts of the country, until 1980, when it was sold at Anderson & Garland by his last surviving relative Miss A.M. Dunn. It was purchased at the auction by well known local publisher Frank Graham. Frank, lived in Jesmond but sadly passed away some years ago and his family have decided to offer the clock for auction again. The vacated Mansion House was later used for warehousing and sadly burnt down in 1895.

Literature:

North Country Clockmakers by C.L. Reid.

Eneas Mackenzie: A historical account of Newcastle upon Tyne, including the Borough of Gateshead, pages 232-234.

Pendulum Publications - Was Fromanteel the Mystery Maker?

The Mansion House Clock - Keith Bates, January 1982.

£12,000-18,000



- 1218 **A scratch-built scale model of the trading ketch Hobah**, 3/16in:1ft scale, the two masted vessel fully rigged and with deck details, painted hull black and red, in glazed frame, 74 x 22 x 63cms.

Note: Hobah was a 56 ton trading ketch built in 1897 by Thomas Gray of Falmouth, in service until 1947.

£300-500



All lots are subject to a Buyer's Premium of 25% plus VAT (30% in total)

Christmas Country House & Fine Interiors Auction, 1st Dec, 2022 - 2nd Dec, 2022

- 1219 **A scratch-built scale model of the Paddle Steamer Duchess of Fife**, with extensive deck detail and painted hull red, white and blue, 137 x 33 x 34cms, mounted to a board base.
 Note: PS Duchess of Fife was a paddle steamer built in 1903 for the Caledonian Steam Packet Company. She spent most of her career serving passenger routes in the Firth of Clyde and was requisitioned for use as a minesweeper during both World Wars. In 1940 she took part in the Dunkirk evacuation, rescuing a total of 1,633 allied troops. She was sold for scrapping in September 1953 after 50 years of service.

£400-600



- 1220 **A fine Victorian scratch-built pond yacht**, the pine hull with weighted keel and rudder, the single mast and bowsprit fitted with three sails, hull 73 x 14 x 13cms, overall 126 x 14 x 99ms high, on wooden stand.

£400-600



- 1221 **An early 20th Century mahogany scratch-built pond yacht**, the hull with plain deck, painted black and white, wooden rudder, the single mast and bowsprit fitted three sails, hull 90 x 16 x 21cms, overall 114 x 16 x 119cms high, on mahogany stand.

£200-300



- 1222 **An early 20th Century scratch-built pond yacht**, the teak hull with weighted keel and wooden rudder, fitted mainsail and jib, hull 128 x 25cms, 243cms high overall, on pine stand.

£400-600



Christmas Country House & Fine Interiors Auction, 1st Dec, 2022 - 2nd Dec, 2022

- 1223 **A good scratch-built live steam model of the Launch Branksome**, scale 1:12, well detailed with panelled interior, padded seats, steam-powered kettle, and half canopy, on stand bearing plaque 'Branksome Windermere Steam Launch, scale 1in. to 1foot, model builder W. Nurse K.M.B.E.', 130 x 23cms.

Notes:

Branksome is one of the finest surviving Victorian steam launches in the world and is a member of the UK's National Historic Fleet. Built in 1896 by George Brockbank of Windermere, Branksome was commissioned for Mrs Edna Howarth of Langdale Chase. Originally named Lily after Edna's daughter, Branksome was designed for luxury. It cost around four times as much as similar boats, and features leather seats, walnut panelling, velvet upholstery and a marble hand basin in the galley.

The vessel was owned by Mrs Howarth until 1919 and then passed into the Cowburn family. It stayed with them until around 1958 when Branksome was sold to George Pattinson. Branksome retains its original engine, built in 1896 by W. Sisson & Co of Gloucester, number 502.

£300-500



- 1224 **A Victorian cased menagerie of taxidermy British birds**, comprising: Sparrow Hawk, Kestrel, Jay, Starling, Pheasant, Plover, Song Thrush, Blackbird, Cuckoo, Black Gull, Corncrake and Stone Curlew, 121 x 33 x 63cms.

£200-300



- 1225 **A 20th Century Japanese bronze tiger**, brown patina with striped design and glass eyes, 31cms long.

£100-200



Christmas Country House & Fine Interiors Auction, 1st Dec, 2022 - 2nd Dec, 2022

- 1226 **Ann Baxter, Boroughbridge, North Yorkshire: brown patinated bronze model of a horse** kneeling on front legs, unsigned, 49cms long, 26cms high.
Notes: Although seemingly unsigned this was bought by the Vendor's family with the two items in the following lot. Award-winning artist Ann Baxter, has led a fascinating and unconventional life, growing up on the family smallholding, hating school and leaving with no formal qualifications. She went on to attend Leeds College of Art on the strength of her portfolio and specialised in sculpture. In adulthood, she managed to recapture the joys of living on a small holding with her husband and son, and also bought two pure-bred Arabian fillies.
£200-400



- 1227 **After Giambologna (Italian 1529-1608): Mercury flying on the breath of Zepher**, after the antique, green patinated bronze, and mounted on a black marble plinth with patinated bronze frieze depicting putti, 66cms high.
Notes: The most celebrated sculpture by Giambologna is the Mercury, known in four versions whose chronology is uncertain. His first design, a heavy wingless figure, is preserved in a model in Bologna. When Giambologna returned to Florence, he referred to his earlier work in a second version, a flying Mercury, now lost or identical to one in Vienna. This bronze was sent by Cosimo as a diplomatic gift to the Holy Roman Emperor Maximilian II, when they were negotiating the marriage of Maximilian's sister Giovanna to Francesco de' Medici. The messenger God was Maximilian's protector and the pose was based on a medal of Maximilian by Leone Leoni (1551).
The fourth, a flying variant in Museo Nazionale del Bargello, Florence (of which this lot is a copy) was completed by 1580, when it became a fountain figure at the Villa Medici, Rome. Mercury balances on a bronze column of air issuing from the mouth of Zephyr, over which flowed water, increasing the illusion that he was floating. The god assumes an arabesque, balanced precariously on his toes, and points upward to Jupiter. It is Mannerist in that it can be appreciated from all angles and is elongated and elegant, yet these features contrast with its amazing physicality and an evident study of weights and balances. The preciousness of "Maniera" is blended with what became Baroque illusionism and the freedom derived from wax.
£200-300



- 1228 **After Felix Lecomte (French 1737-1817): a patinated bronze sculpture** of Emperor Napoleon Bonaparte on horseback, pointing to the enemy, on naturalistic base, with cast signature 'Lecomte', and black marble plinth, 40 x 19 x 50cms high.
£200-400



All lots are subject to a Buyer's Premium of 25% plus VAT (30% in total)

Christmas Country House & Fine Interiors Auction, 1st Dec, 2022 - 2nd Dec, 2022

- 1229 **After Pierre-Jules Mene, (French, 1810-1879): a patinated bronze model of a goat**, on rocky base, cast signature 'Mene', 38 x 8 x 44cms high.
£200-300



- 1230 **After Eutrope Bouret (French, 1833-1906): a brown patinated bronze young farmer**, holding a knife and bread while leaning on a fence post, with chickens around his feet, on naturalistic base and green marble plinth, cast signature 'Bouret', 56cms high.
£300-500



- 1231 **Jonathan Knight: Three Avocets, patinated bronze**, with light green bodies, dark brown legs and dappled stamped base, signed 'Knight' and limited edition 7/9, 54cms long, 19cms wide, 31cms high; with receipt, insurance document and catalogue from Rowles Fine Art.
Provenance: Purchased from Rowles Fine Art in 2008.
£2,000-3,000



- 1232 **After Andrea del Verrocchio (1435-1488): The Equestrian Statue of Bartolomeo Colleoni**, brown patinated bronze, the armoured figure on a steed with front leg raised, on plinth base, 34 x 18 x 36cms high.
£400-600



- 1233 **Just Andersen (Denmark, 1884-1943): a green/brown patinated bronze sculpture of a female nude**, signed and stamped 'D2300', 27.5cms high.
£120-220



All lots are subject to a Buyer's Premium of 25% plus VAT (30% in total)

Christmas Country House & Fine Interiors Auction, 1st Dec, 2022 - 2nd Dec, 2022

- 1234 § **Byron Howard (b.1947): "Barbirolli's Hands"/"Rarely, Rarely, Cometh Thou Spirit of Delight"**, modelled as the music conductor Sir John Barbirolli's hands outstretched and in motion, with verse inscribed on the composer's cuff, patinated bronze on a marble plinth, with brass plaque, limited edition 2/6, 42cms long, 31cms high x 32cms wide.
Provenance: Purchased by Mr and Mrs Brown from the Artist's studio in Fishlake near Doncaster in 2005. With certificate of authenticity.



The artist Byron Howard attended Doncaster School of Art in the late 1970s/early 1980s which was run by the above Ken Brown. So impressed was the staff that Byron was invited to take the sculpture class himself. Byron was later invited by Lady Barbirolli to produce a bronze bust of Sir John which now is sited outside Manchester Free Trade Hall in recognition of Sir John in setting up and conducting the Halle Orchestra. Mr and Mrs Brown would attend the concerts conducted by Sir John in the 1950s, a connection which also attracted them to the sculpture.

£500-800

- 1235 **After Isidore Jules Bonheur (French, 1827-1901): a patinated bronze bull**, standing on rocky base, on black marble base, 35 x 15 x 32cms high.
£200-400



- 1236 **Artist Unknown: a patinated bronze sculpture of a racehorse taking a hurdle**, on black marble base, 35 x 20 x 33cms high.
£200-400



Christmas Country House & Fine Interiors Auction, 1st Dec, 2022 - 2nd Dec, 2022

- 1237 **Agatha Walker (1888-1980): a painted wax statuette**, Jean Forbes-Robertson in the role of Peter Pan, 1930, inscribed, dated and signed in monogram to the plinth 34cm high. This wax figurine is modelled on the actress Jean Forbes-Robertson (1905-1962) in the title role of J M Barrie's 1904 children's play 'Peter Pan'. Jean Forbes-Robertson first played the part at the Gaiety Theatre, Christmas 1927, and subsequently became one of the best-known actresses associated with the role, playing it at the Garrick Theatre, 1928/1929; at the St James's, 1929/1930; and at the Palladium for five consecutive Christmases, from 1930 until the end of the 1934/35 season. Other actresses took the part subsequently at the Palladium, but Jean Forbes-Robertson returned to play it for the last time there for the 1938/39 season. This is one of several wax figurines modelled by Agatha Walker in the 1920s and 1930s, mostly of actors and actresses in costume for roles in successful productions on the London stage. There had been a craze for ceramic figurines of performers in the 19th century and Walker attempted to revive this tradition with her limited edition sculptures. They were modelled from life in plaster and coated with a fine wax layer which was then coloured. In 1931 there was an exhibition of her wax figures at the Fine Art Society.
£80-120



- 1238 **A pair of 20th Century gilt metal garnitures of 17th Century soldiers**, holding poleaxes, on alabaster bases with gilt metal mounts, each 40cms high.
£70-100



- 1239 **Ann Baxter, Boroughbridge, North Yorkshire: a carved stone sculpture of a rearing horse**, signed and dated '75, 18cms high; and a carved slate horse bust, signed and dated '75, 20 x 13cms. (2)
Notes: Award-winning artist Ann Baxter has led a fascinating and unconventional life, growing up on the family smallholding, hating school and leaving with no formal qualifications. She went on to attend Leeds College of Art on the strength of her portfolio and specialised in sculpture. In adulthood, she managed to recapture the joys of living on a small holding with her husband and son, and also bought two pure-bred Arabian fillies.
£100-200



Christmas Country House & Fine Interiors Auction, 1st Dec, 2022 - 2nd Dec, 2022

- 1240 **Tarentine statue of a female figure or Lady of Fashion**, 4th Century B.C. terracotta, wearing headdress and linen gown, standing on pedestal, 19cms high.
£200-300



- 1241 **An unusual Art Deco Odeonesque metal uplighter**, with circular stepped shade, circular tapering stem and circular base, 55 x 174cms.
£100-200



- 1242 **A contemporary Venetian (possibly Murano) glass electrolier**, with six branches fitted for electricity, subsidiary branches with pressed palmettes, coloured flowers in yellow, pale-blue and pink glass, the lower section with pinched wavy decoration, approximately height 115cms.
£200-400



- 1243 **Manner of Jaques of London: a boxwood and ebony Staunton-style chess set**, weighted, some pieces with crown mark, the Kings 10cms high, in a mahogany box; with an associated chess board.
£100-200



- 1244 **A collection of Grand Tour plaster intaglios**, contained in two inlaid mahogany book-pattern cases, cross-banded in satinwood, one with leather spine inscribed 'Gems' (the larger missing spine), the larger containing 100 intaglios in white, 23x 34cms, the smaller 109 intaglios in red, 24 x 28cms. (2)
£100-200



All lots are subject to a Buyer's Premium of 25% plus VAT (30% in total)

Christmas Country House & Fine Interiors Auction, 1st Dec, 2022 - 2nd Dec, 2022

- 1245 **A George III tortoiseshell tea caddy**, of sarcophagus form with ivory edges and handles to covers, raised on bronzed metal feet. 20 x 13x 17cms high; together with **another George III tortoiseshell tea caddy**, of rectangular form with domed cover and two covers to interior, 16 x 8 x 11cms high. (2)
Ivory self-declaration: 47MU114W.
£100-200



- 1246 **A George III mahogany tea caddy**, of serpentine form with gilt brass leaf and shell handle and bone escutcheon, no interior, raised on bun feet, 25 x 14 x 15cms high.
£50-100



- 1247 **A 19th Century apprentice miniature mahogany chest of drawers**, with parquetry top of specimen woods including partridge wood, rosewood and satinwood, above three short and three long drawers flanked by pillars, raised on turned feet, 34.5 x 21.5 x 29cms high.
£100-200



- 1248 **A 19th Century Anglo-Indian ebony correspondence cabinet**, inlaid throughout with inlaid ivory to a floral design, the letter rack to top behind ink wells, the front opening to reveal fall flap enclosing writing slope and shelf, two drawers under, raised on bun feet, 37 x 23 x 60cms high.
£200-300



- 1249 **An early 20th Century carved mahogany easel stand**, with carved leaf, cabochon and scrollwork cornice, above fluted uprights, 61 x 195cms high.
£50-100



All lots are subject to a Buyer's Premium of 25% plus VAT (30% in total)

Christmas Country House & Fine Interiors Auction, 1st Dec, 2022 - 2nd Dec, 2022

- 1250 **A Chinese ebonised, pierced and carved jardiniere/vase stand,** the circular top inset with marble panel, decorative floral frieze on slender downswept legs united by a cross stretcher, 39 cm diameter overall x 91cms high.
£80-120



- 1251 **An ornate Regency style wirework plant stand,** 105 x 33 x 92cms high.
£150-200



- 1252 **An Edwardian mahogany and satinwood banded pedestal,** the square top with barber pole inlay to edge, square tapered stem, on plinth base, 25.5 x 110cms high.
£70-110



- 1253 **An early 19th Century mahogany swing toilet mirror,** with rectangular plate, ring turned uprights, the bow front base fitted with three drawers, all outlined in boxwood on turned ball feet, 60cms wide, 62cms high.
£80-120



- 1254 **A 19th Century giltwood girandole mirror,** by Samuel Lacand, the oval plate within a writhen and leaf border, acanthus leaf sconces, cabochon and scroll pattern frieze, with maker's label to reverse, 110 x 62cms.
£100-200



All lots are subject to a Buyer's Premium of 25% plus VAT (30% in total)

Christmas Country House & Fine Interiors Auction, 1st Dec, 2022 - 2nd Dec, 2022

- 1255 **A Victorian carved rosewood firescreen**, with a decorative cabochon leaf and flowerhead frieze above an ornate needlework panel depicting woman and cat on a leafy balcony, barley twist upright with pierced apron, on fluted downswept scroll legs with barley twist stretcher, 66 x 130cms high.
£60-100



- 1256 **A Chinese carved hardwood firescreen, c1900**, the frame modelled as bamboo, with central inlaid hardstone panel depicting birds and branches, within a pierced leaf pattern border, 74 x 88cms high.
£100-200



- 1257 **A fine Victorian moulded brass and steel fire curb**, with undulating scroll and foliate top, 'C' scroll corners and gadrooned bottom edge, scroll pattern feet, 154 x 49 x 26cms at highest point.
£200-300



- 1258 **An early 20th Century Arts & Crafts style embossed copper and mahogany fire surround**, the bowfront plinth above ogee cornice, fluted and shaped uprights, embossed copper panel within decorated with leaves and fruit bowfront fender, 173 x 215cms to top of plinth, the interior to base of copper panel 74 x 30cms wide.
£100-200



- 1259 **Workshop of Robert 'Mouseman' Thompson (Kilburn): an oak standard lamp**, octagonal column and base, with carved mouse trademark, 169cms with shade.
Purchased from Robert Thompson's Craftsmen Ltd, Kilburn in 1980.
£300-500



All lots are subject to a Buyer's Premium of 25% plus VAT (30% in total)

Christmas Country House & Fine Interiors Auction, 1st Dec, 2022 - 2nd Dec, 2022

- 1260 **Workshop of Robert 'Mouseman' Thompson, Kilburn: an oak table lamp**, with carved mouse signature, 36cms high to fitting, with shade.
£300-500



- 1261 **Workshop of Robert 'Mouseman' Thompson (Kilburn): an oak trinket box**, rectangular, the lift-off cover with carved mouse trademark, 18.5 x 11.5 x 9cms high.
£150-250



- 1262 **Workshop of Robert 'Mouseman' Thompson (Kilburn): an oak breadboard**, of canted rectangular form, with carved mouse trademark, 25 x 30.5cms wide.
£100-200



- 1263 **Workshop of Robert 'Mouseman' Thompson (Kilburn): an oak pen tray**, rectangular with penny moulding, three sections/wells, with carved mouse trademark, 12 x 30.5cms wide.
£200-300



- 1264 **Workshop of Robert 'Mouseman' Thompson (Kilburn): an oak fruit bowl**, with central carved mouse trademark, 30cms dia.
£150-250



Christmas Country House & Fine Interiors Auction, 1st Dec, 2022 - 2nd Dec, 2022

- 1265 **Workshop of Robert 'Mouseman' Thompson (Kilburn): an oak book trough, with carved mouse trademark, 45.5 x 21 x 20cms high.**
£100-200



- 1266 **Workshop of Robert 'Mouseman' Thompson (Kilburn): an oak octagonal small chopping board or teapot stand, moulded edge, with carved mouse trademark, 19cms diameter.**
£80-120



- 1266A **Workshop of Robert 'Mouseman' Thompson (Kilburn): A carved oak Yorkshire Rose, with carved mouse trademark, 15.5cms wide.**
£200-400



- 1267 **Workshop of Robert 'Mouseman' Thompson (Kilburn): an unusual oak adzed bespoke cheese wedge paperweight, with carved mouse trademark, 18cms (no slot and not hollowed out).**
£80-120



- 1268 **Workshop of Robert 'Mouseman' Thompson (Kilburn): a pair of adzed oak bookends, carved with mouse trademark, 9.5 x 9 x 15cms.**
£250-400



All lots are subject to a Buyer's Premium of 25% plus VAT (30% in total)

Christmas Country House & Fine Interiors Auction, 1st Dec, 2022 - 2nd Dec, 2022

- 1269 **Workshop of Robert 'Mouseman' Thompson (Kilburn): an oak stationery/letter rack**, with carved mouse trademark, 33 x 13 x 21cms high.
Purchased from Robert Thompson's Craftsmen Ltd, Kilburn in 2005.
£200-300



- 1270 **Workshop of Robert 'Mouseman' Thompson (Kilburn): an oak sewing workbox**, with hinged top and fitted a single drawer, 50 x 32 x 61cms high.
£700-1,000



- 1271 **Workshop of Robert 'Mouseman' Thompson (Kilburn): an oak octagonal coffee table**, the adzed top on a shaped cruciform style base, 51 x 48cms high,
Purchased from Robert Thompson's Craftsmen Ltd, Kilburn in 1988.
£300-500



- 1272 **Workshop of Robert 'Mouseman' Thompson (Kilburn): an oak open bookcase**, solid ends with panelled back, gallery top, four adjustable shelves, with carved mouse trademark, 83 x 26 x 122cms high.
Purchased from Robert Thompson's Craftsmen Ltd, Kilburn in 2005.
£800-1,200



- 1273 **Workshop of Robert 'Mouseman' Thompson (Kilburn): an oak open bookcase**, solid ends with panelled back, gallery top, four adjustable shelves, with carved mouse trademark, 83 x 26 x 122cms high.
Purchased from Robert Thompson's Craftsmen Ltd, Kilburn in 2005.
£800-1,200



Christmas Country House & Fine Interiors Auction, 1st Dec, 2022 - 2nd Dec, 2022

- 1274 **Workshop of Robert 'Mouseman' Thompson (Kilburn): an oak refectory coffee table**, the rectangular adzed top raised on octagonal baluster supports, sledge feet and chamfered stretcher, with carved mouse trademark, 91.5 x 38 x 44.5cms high.
Purchased from Robert Thompson's Craftsmen Ltd, Kilburn in 2016.
£300-500



- 1275 **Workshop of Robert 'Mouseman' Thompson (Kilburn): an oak cow stool**, the kidney-shaped seat with a carved mouse trademark, raised on three tapering octagonal legs, 37 x 28 x 46cms.
Purchased from Robert Thompson's Craftsmen Ltd, Kilburn in 2006.
£200-300



- 1276 **Workshop of Robert 'Mouseman' Thompson (Kilburn): an oak 4'6" octagonal dining table**, the adzed top on a cruciform base, with a carved mouse trademark, 147.5 (dia,) x 73cms high.
Purchased from Robert Thompson's Craftsmen Ltd, Kilburn in 1990.
£1,000-2,000



- 1277 ***Withdrawn***



- 1278 **Workshop of Robert 'Mouseman' Thompson (Kilburn): an oak side chair**, with double rail back and adzed solid seat, square legs with stretchers, with carved mouse trademark, 45 x 44 x 85cms.
Purchased from Robert Thompson's Craftsmen Ltd, Kilburn in 1990.
£100-200



Christmas Country House & Fine Interiors Auction, 1st Dec, 2022 - 2nd Dec, 2022

- 1279 **Workshop of Robert 'Mouseman' Thompson (Kilburn): an oak rocking chair**, with studded leather seat, carved lattice back, carved mouse trademark, 98cms high.
£500-800



- 1280 **Workshop of Robert 'Mouseman' Thompson (Kilburn): an oak monk's chair**, with curved back and shaped arms on four carved octagonal supports and three lattice panels, studded leather seat, on shaped octagonal legs joined by a cross stretcher, with carved mouse trademark, 63 x 57 x 80cms high.
£500-800



- 1281 **Workshop of Robert 'Mouseman' Thompson (Kilburn): an oak monk's chair**, with curved back and shaped arms on four carved octagonal supports and three lattice panels, studded leather seat, on shaped octagonal legs joined by a cross stretcher, with carved mouse trademark, 64 x 59 x 80cms high.
£500-800



- 1282 **Workshop of Robert 'Mouseman' Thompson (Kilburn): four oak lattice back chairs**, studded cow-hide seats, on two octagonal turned front legs, with carved mouse signature, 44 x 43 x 85cms high.
Purchased from Robert Thompson's Craftsmen Ltd, Kilburn in 1980(2) and 1990(2).
£1,200-1,800



- 1283 **Workshop of Robert 'Mouseman' Thompson (Kilburn): an oak cow stool**, the kidney-shaped seat with a carved mouse trademark, raised on three tapering octagonal legs, 37 x 28 x 46cms.
Purchased from Robert Thompson's Craftsmen Ltd, Kilburn in 2006.
£200-300



All lots are subject to a Buyer's Premium of 25% plus VAT (30% in total)

Christmas Country House & Fine Interiors Auction, 1st Dec, 2022 - 2nd Dec, 2022

- 1284 **Workshop of Robert 'Mouseman' Thompson (Kilburn): a pair of small oak bedside bookcases**, of rectangular form, with moulded adzed tops, each fitted two adjustable shelves, with recessed carved mouse trademark, 50 x 27 x 69cms high. Purchased from Robert Thompson's Craftsmen Ltd, Kilburn 2014/15.
£600-900



- 1285 **Workshop of Robert 'Mouseman' Thompson (Kilburn): a carved oak side table**, the rounded rectangular top overhanging apron and four faceted octagonal baluster legs, one carved with mouse trademark, peripheral stretcher, 47 x 36 x 48cms high.
£200-400



- 1286 **'Eagleman' Albert J. Jeffray (Sessay): an oak dining table**, the rectangular adzed top raised on octagonal baluster supports and sledge bases, connected by a chamfered understretcher, 167 x 84 x 73cms high.
£300-500



- 1287 **'Eagleman' Albert J. Jeffray (Sessay): an oak coffee table**, the square adzed top raised on octagonal baluster legs with under tear, block feet, 84 x 46cms high.
£200-400



- 1288 **'Eagleman' Albert J. Jeffray (Sessay): a set of six oak dining chairs** including two carvers, each with pierced and carved panel backs decorated with a Yorkshire Rose, studded leather seats on octagonal baluster legs, the carvers 53cms across arms x 90cms high, the other chairs 44 x 84cms high.
£600-900



All lots are subject to a Buyer's Premium of 25% plus VAT (30% in total)

Christmas Country House & Fine Interiors Auction, 1st Dec, 2022 - 2nd Dec, 2022

- 1288A **Peter "Rabbitman" Heap: an oak nest of three occasional tables**, each on four octagonal legs with peripheral stretchers, carved rabbit trademark, the largest 61cm x 36.5 x 49cms high
£200-300



- 1289 **A Victorian carved rosewood piano stool**, rectangular, upholstered in gros point floral needlework, with shaped frieze and leaf carved cabriole legs, scroll and peg feet, 94 x 50 x 48cms high.
£50-100



- 1290 **Six ornate George IV and later mahogany dining chairs**, with carved acanthus leaf and scroll backs and cross splats, drop-in seats, on reeded tapering legs, including two carvers, two chairs 20th century and stamped with makers mark 'JONDALE TROUTBECK'. (6)
£200-400



- 1291 **A late Victorian mahogany cylinder front desk**, with spindle gallery, the tambour shutter enclosing a fitted interior of pigeonholes and drawers, and a tooled gilt leather pull-out writing surface with ratchet adjustable centre, two frieze drawers, on turned tapering legs and castors, 105 x 56 x 112cms high.
£150-250



- 1292 **A 19th Century mahogany and rosewood banded rent/dining table**, the oval top with moulded border, above eight drawers to the frieze with turned knob handles, raised on reeded baluster stem and four fluted downswept feet with brass castors, 138 x 112 x 74.5cms high.
£200-300



All lots are subject to a Buyer's Premium of 25% plus VAT (30% in total)

Christmas Country House & Fine Interiors Auction, 1st Dec, 2022 - 2nd Dec, 2022

- 1293 **An unusual Arts & Crafts inlaid mahogany corner unit/washstand**, early 20th Century, the shaped triangular top with gallery, two short drawers below with brass leaf pattern handles, flanked by pigeon holes, raised on octagonal supports and pad feet united by undertier, 78 x 48 x 104cms high.
£70-110



- 1294 **A Victorian oak marble top bedside cabinet**, circular, modelled as a fluted cylindrical column with single door enclosing shelves, on octagonal base, 40 (diameter at top) x 76cms high.
£80-120



- 1295 **A 19th Century carved mahogany two-seater sofa**, the downswept padded arms on carved leaf, berry and scroll supports, the stuff over seat upholstered in an eau de nil floral satin damask, with guilloche carved seat rail, on castors, 135 x 82 x 83cms high.
£100-200



- 1296 **A Scottish Regency mahogany rent table**, the circular moulded top inset blue tooled leather surface, the frieze with four real and four dummy drawers, the real drawers inset ivory labels 'E', 'W', 'S', and 'K', on turned stem and four fluted downswept legs with a leaf cast to brass caps and castors, 115 x 73cms high.
£1,000-1,500



- 1297 **A George III mahogany and satinwood banded linen press**, the architectural broken pediment and dentil frieze above a pair of panel doors enclosing shelves, the lower section with three long graduated drawers, swan neck brass handles, on bracket feet, 127 x 63 x 190cms.
£200-300



All lots are subject to a Buyer's Premium of 25% plus VAT (30% in total)

Christmas Country House & Fine Interiors Auction, 1st Dec, 2022 - 2nd Dec, 2022

- 1298 **An 18th Century South German inlaid burr walnut commode**, South German, the serpentine and broadly banded top with moulded border above three deep inlaid drawers, on associated later scroll carved apron and squat cabriole legs, 120 x 62 x 92cms high.
£200-400



- 1299 **A large and impressive George III mahogany breakfront secretaire bookcase**, with stepped and inlaid cornice above four glazed astragal doors enclosing adjustable shelves, lower section with a central secretaire drawer opening to reveal a fitted interior of satinwood veneered drawers and pigeon holes, panel cupboard below with single shelf flanked by a pair of taller cupboards with two adjustable shelves, the whole on plinth base, 245 x 62 x 268cms high.
Provenance: By repute, purchased from the widow of Percy Macquoid, who published the History of English Furniture in 1906.
£2,000-4,000



- 1300 **A George III mahogany secretaire press**, with shaped cornice and inlaid frieze above a pair of doors with oval veneered panels, opening to reveal shelved interior, the lower section with secretaire drawer opening to reveal a satinwood veneered fitted interior of drawers and pigeon holes, three long graduated drawers below, on bracket feet, 120 x 60 x 231cms.
£250-350



- 1301 **A George III style mahogany serpentine fronted chest**, circa 1920s, with thumb moulded edge, above two short and three long cock beaded drawers, blind fret cut stiles, over shaped bracket feet, 113 x 62 x 113cms high.
By repute, purchased at the sale of the contents of Belsay Castle, post-WWII.
£100-200



- 1302 **A George III mahogany chest on chest**, with shaped pediment above a cavetto frieze, the upper section with four long graduated drawers, the lower section with baize lined brushing slide and three long graduated drawers, stamped brass swan neck handles, fluted canted sides on shaped bracket feet, 108 x 55 x 222cms high.
£400-600



All lots are subject to a Buyer's Premium of 25% plus VAT (30% in total)

Christmas Country House & Fine Interiors Auction, 1st Dec, 2022 - 2nd Dec, 2022

- 1303 **A pair of 19th Century Sheraton Revival inlaid mahogany display cabinets on stand**, each with cavetto cornice, above a pair of glazed astragal doors opening to reveal blue baize lined interior with two shelves, lower sections with inlaid tops decorated with central violin, music and flutes, within a foliate surround, two drawers below with square tapered legs connected by an undertier, 91.5 x 43 x 181cms high.
PROVENANCE: Both cabinets have old labels on inscribed 'Mrs Walpole'. Sold by a descendant of the Walpole Family, probably originally in the family home of Heckfield Place, Hampshire.
£600-800



- 1304 **A near-matching set of eight George III mahogany dining chairs**, the arched top rails above broad pierced and carved interlocking splat with flowerhead detail, bowfront stuff-over seats on square tapered legs connected by 'H' stretchers (includes two carvers),
£300-500



- 1305 **A set of ten Georgian-style mahogany high-back dining chairs**, first half 20th Century, the arched backs and stuff-over sets upholstered in a needlework cotton depicting figures and flowers, with bowfront seat rails, raised on acanthus carved cabriole legs with claw and ball feet, width of seat 49cms, the depth overall 52cms, height 110cms.
£300-500



- 1306 **A late Victorian inlaid mahogany pedestal desk in the Arts & Crafts taste**, the rectangular top inset with a leather writing surface, above a single frieze drawer flanked by panelled cupboards, decorated with foliate scrolls, each enclosing a single shelf, on bracket feet, 123 x 56 x 73cms high.
£100-200



- 1307 **A Victorian mahogany console table**, the associated architectural back centred by a carved shield, serpentine marble top above a plain frieze with single short central drawer, the substantial carved front legs with fluting, leaf and scrollwork design and paw feet, 122 x 45 x 113cms high.
£100-200



All lots are subject to a Buyer's Premium of 25% plus VAT (30% in total)

Christmas Country House & Fine Interiors Auction, 1st Dec, 2022 - 2nd Dec, 2022

- 1308 **A 19th Century mahogany graduated three-tier dumb waiter**, the circular shelves with raised border, on turned supports and tripod base with pad feet, 53 x 121cms high.
£80-120



- 1309 **An ornate Victorian ebonised and gilt metal mounted bowfront display cabinet**, with recessed top above single door inset with oval glass panel opening to reveal plush lined shelves, on plinth base (later fitted for electricity) 78 x 44 x 108cms high.
£150-250



- 1310 **A richly carved Victorian oak side/pier cabinet with a sporting theme**, the rectangular top with carved and moulded lunette border, above two short drawers to the frieze flanked by carved dog heads, large single panel door below relief carved with ribbons, horn, bow and arrow, knives, rifle, powder flask and bag, all within an oak leaf and acorn surround, carved game bird uprights, carved roundel side panels, on plinth base with bun feet, 102 x 45 x 116cms high.
£150-250



- 1311 **A Regency mahogany tea table**, the D-shaped folding swivel top above plain frieze with straight gadrooned edge, raised on a spirally fluted stem and concave sided platform with four downswept feet, brass caps and castors, 102 x 50 x 74cms high.
£100-150



- 1312 **A Georgian mahogany tilt-action tripod table**, the shaped circular piecrust top on fluted and turned stem and leaf-wrapped downswept legs with pad feet (restorations), 84 (dia) x 73cms high.
£100-200



All lots are subject to a Buyer's Premium of 25% plus VAT (30% in total)

Christmas Country House & Fine Interiors Auction, 1st Dec, 2022 - 2nd Dec, 2022

- 1313 **A mid 19th Century burr maple and ebony strung card table**, the D-shaped folding swivel top opening to reveal a baize-lined playing surface, the frieze with leaf pattern tablet, square tapered column on concave sided platform raised on four downswept feet with brass caps and ceramic castors, 92 x 46 x 74cms high.
£100-200



- 1314 **A late Regency mahogany tea table**, the D-shaped folding swivel top above the frieze with carved foliage corners, raised on a reeded vase-shaped stem and four leaf capped downswept feet with brass caps and castors, 91 x 45 x 74cms high.
£100-150



- 1315 **A George III mahogany serpentine chest**, the top with convex edge above four long graduated drawers, with pierced brass escutcheons and swan neck handles, line inlaid canted sides, raised on bracket feet, 126 X 63 x 105cms high.
£300-500



- 1316 **An ornate 19th Century North Italian ivory inlaid ebony bonheur de jour**, the upper section with spindle gallery top above a pair of panel doors with engraved ivory scenes of classical male and female in rustic settings, opening to reveal two rows of four inlaid drawers, two short drawers below on shaped bracket supports, the lower section with single frieze drawer opening to reveal a retractable leather inset writing surface, on inlaid square section tapering supports connected by understretchers with central finial, turned peg feet, 81 x 47 x 177cms high.
£2,500-3,500



- 1317 **A carved oak court cupboard**, the upper section with carved foliate frieze above a pair of cupboards flanked by cup and cover supports, the lower section with two short drawers above a pair of carved and panelled cupboards, on block feet, of 19th Century construction using some 17th/18th Century elements, 161 x 60 x 172cms high.
£100-200



All lots are subject to a Buyer's Premium of 25% plus VAT (30% in total)

Christmas Country House & Fine Interiors Auction, 1st Dec, 2022 - 2nd Dec, 2022

- 1318 **A nest of three Chinese carved huanghuali occasional tables**, with pierced and carved decoration and burr kang tops, the largest 46 x 33 x 63cms high, the smallest 31 x 25 x 44cms high.
£200-400



- 1319 **A Victorian matched dining room suite**, comprising: a highly carved Victorian oak sideboard, the rectangular top with carved foliate borders, above three leaf-carved frieze drawers with lion mask and ring handles, intersected by carved masks, the lower section by a pair of panelled doors depicting lions, recess below with carved shell and leaf cover, flanked by a pair of medallion panel doors, figural uprights on leaf carved and plinth base, 214 x 70 x 99cms high; a large refectory dining table, the rounded rectangular plank top on carved square tapering column supports and cross pattern feet, 201 x 98 x 73cms high; and a set of six late 19th/20th century rustic oak spindle-back and rush-seat dining chairs, includes two carvers.



£200-400

- 1320 **A George III mahogany tilt-action tripod table**, the shaped circular piecrust top on turned and spirally fluted stem and downswept legs with pad feet, 75 dia x 71 cm high.
£100-200



- 1321 **An early 19th Century Scandinavian painted oak and pine marriage chest**, domed lid, the front painted with painted panels and initials 'M.J.H.S.' and indistinctly dated, the interior with wells and candle box, 150 x 66 x 69cms high.
£200-400



Christmas Country House & Fine Interiors Auction, 1st Dec, 2022 - 2nd Dec, 2022

- 1322 **An early 19th Century Scandinavian painted pine marriage chest**, the domed lid painted with floral sprigs and scrolls, the front painted initials 'K.H.H.D.' and dated 1805, the interior with an open candle compartment, iron staff work and escutcheon, with side carrying handles, 147 x 63 x 76cms high.
£200-400



- 1323 **An 18th Century oak mule chest**, with rectangular plank top, panelled front, with two short drawers, on bracket feet, 149 x 57 x 84cms high.
£100-150



- 1324 **An early Victorian mahogany work table stamped 'Gillows'**, the rounded rectangular double-flap top above a frieze drawer opposed by a dummy drawer, work box below upholstered in a couched floral satin brocade, leaf carved scroll work supports on a rectangular platform, on paw feet, on brass castors, 60 (opened) x 44 x 76cms high.
£500-700



- 1325 **An early Victorian mahogany library table stamped 'Gillows'**, the rounded rectangular top with straight gadroon edge, raised on reeded and turned supports with sledge bases and bun feet, on castors, 'Gillows' stamp to underside edge, 121 x 71 x 74cms high.
£800-1,000



- 1326 **A Victorian mahogany and banded side table**, stamped 'Gillows & Co', the rounded rectangular top above a shaped scroll and leaf frieze, raised on octagonal baluster and carved leaf supports, sledge bases with paw feet, 71 x 44 x 72cms high.
£500-700



All lots are subject to a Buyer's Premium of 25% plus VAT (30% in total)

Christmas Country House & Fine Interiors Auction, 1st Dec, 2022 - 2nd Dec, 2022

- 1327 **A Victorian mahogany card table, stamped 'Gillow',** the 'D' shaped folding swivel top opening to reveal a baize lined playing surface, plain column stem with gadrooned collar, concave sided platform base on fluted melon feet, on castors, 91 x 46 x 74cms high.
£100-200



- 1328 **A Victorian rosewood card table stamped 'Gillows Lancaster',** the 'D' shaped folding swivel top with applied gadrooned border opening to reveal a baize lined playing surface, anthemion tablet to frieze, on reeded column with concave sided platform with substantial lappet, scroll and paw feet, on castors, 92 x 46 x 74cms high.
£200-400



- 1329 **A mid 19th Century mahogany tilt-action dining table, stamped 'Gillows Lancaster',** the circular top with straight gadrooned edging, raised on a reeded, carved acanthus and turned stem with straight gadrooned collar, triform base with melon feet, stamped under table top, 128 (dia) x 70cms high.
£800-1,000



- 1330 **A substantial late Victorian mahogany extending dining table,** the rounded rectangular moulded top opening to fit three additional leaves, raised on cabriole legs with castors, 151 (275 extended) x 136 x 76cms high.
£700-900



- 1331 **A decorative pietra dura table top,** of moulded circular form and with a central coat of arms, possibly that of the Michie family, within a leaf and scroll border, on associated mahogany base with splayed feet and under tier, 64 x 52cms high.
£100-200



Christmas Country House & Fine Interiors Auction, 1st Dec, 2022 - 2nd Dec, 2022

- 1332 **An Edwardian inlaid mahogany three-tier buffet**, with bowfront upper section and raised back, barber pole style inlaid edging, square section supports, on brass castors, 107 x 50 x 111cms high.
£200-300



- 1333 **Edwards & Roberts: a late 19th Century painted mahogany Pembroke table**, the rounded rectangular and moulded double flap top centred by an oval painted panel depicting a romantic couple and putto in landscape within a ribbon, floral and wheat surround, single drawer to the frieze, on chamfered square legs connected by broad cross stretcher, stamped to top of drawer, 97cms (opened) x 65 x 72cms high.
£300-500



- 1334 **Two Edwardian Scottish Arts & Crafts pyrography footstools**, by W C Martins of Dundee, bearing the motto's "Wha Daur Meddle Wi Me" and "Touch Me Wha Daur", 28 (diameter) x 35.5cms high, 29 (diameter) x 34cms high respectively.
£60-100



- 1335 **A 19th Century Dutch floral marquetry semi-circular tea table**, the top inlaid with a basket of flowers within foliate surround opening to reveal oval inlaid floral panels to interior, leaf and floral frieze, on banded and inlaid square tapered legs, 71 x 35 x 74cms high.
£100-150



- 1336 **A French cream-painted crackleure effect armoire/wardrobe**, late 19th/20th Century, with bead and leaf frieze, above two central pairs of panel doors enclosing hanging space, one with sliding shelves, flanked at either end by a single door enclosing modern shelving, the doors intersected by fluted column uprights, on tapered legs, 280 x 65 x 185cms high.
£200-300



All lots are subject to a Buyer's Premium of 25% plus VAT (30% in total)

Christmas Country House & Fine Interiors Auction, 1st Dec, 2022 - 2nd Dec, 2022

- 1337 **An ornate Empire style parquetry and gilt metal mounted side/occasional table**, 20th Century, the circular top with moulded edge above a swag and tasselled frieze, tapering hexagonal stem and concave sided base decorated with leaves, on paw feet, 52 x 73cms high.
£400-500



- 1338 **An ornate Anglo-Indian chip-carved hardwood table**, c.1900, octagonal, profusely pierced and carved with leaf and floral scrolls, centred by a decorative pierced and embossed copper tray, with flowerhead and leaf designs, 88 x 61cms high.
£200-400



- 1339 **A George III mahogany chest-on-chest**, the upper section with dentil cornice above three short and three long graduated drawers, fluted canted sides, the lower section with three further long drawers, on bracket feet, 105 x 54 x 177cms high.
£250-450



- 1340 **A 19th Century giltwood fauteuil en bergere, and a fauteuil a la reine**, in the Louis XVI taste, 69 x 69 x 103 and 61 x 58 x 98cms high, each upholstered in a watered silk damask in bands of pale gold and pale grey, interspersed by sprigs of pink and red roses, Purchased from Martel Maides in Guernsey sale, October 2019, The Roger Perrot Collection.
£400-800



- 1341 **A 19th Century mahogany and brass bound military chest**, the rectangular top above two short and three long graduated drawers each with recessed brass handles, brass carrying handles to sides, raised on a shaped plinth base, 131 x 56 x 111cms high.
£200-400



All lots are subject to a Buyer's Premium of 25% plus VAT (30% in total)

Christmas Country House & Fine Interiors Auction, 1st Dec, 2022 - 2nd Dec, 2022

- 1342 **A substantial Breton carved oak armoire**, late 18th/early 19th Century, with a cavetto cornice above a pair of panel doors with brass escutcheons, shaped legs, 154 x 62 x 224cms high.

£200-400



- 1343 **A substantial Breton carved oak armoire**, late 18th/early 19th Century, with arched cornice above a plain frieze and a pair of panel doors with brass escutcheons, (interior with no shelves or rail), three short drawers below, on shaped legs, 162 x 64 x 233cms high.

£300-400



- 1344 **A substantial Breton carved oak armoire**, late 18th/early 19th Century, the arched top with carved leaf and branch frieze above a pair of doors with brass mounts opening to reveal shelves to interior, shaped and carved apron, on squat shaped feet, 144 x 65 x 224cms high.

£200-400



- 1345 **A substantial Breton oak armoire**, late 18th/early 19th Century, the arched top with cavetto frieze above a pair of doors with brass mounts opening to reveal shelved interior, the lower section with three drawers, on squat shaped feet, 141 x 55 x 222cms high.

£200-400



- 1346 **A Breton carved oak armoire**, late 18th/early 19th Century, with carved flowerhead frieze, above a single panelled door with brass mount, opening to reveal hanging space to interior, shaped and carved apron, on squat shaped feet, 98 x 58 x 209cms high.

£150-250



All lots are subject to a Buyer's Premium of 25% plus VAT (30% in total)

Christmas Country House & Fine Interiors Auction, 1st Dec, 2022 - 2nd Dec, 2022

- 1347 **A Venetian style giltwood and brocade two-seater settee**, late 19th/early 20th Century, the uprights modelled as satyrs, the back and seat upholstered with a rich velvet brocade in fern green, burgundy and blue, 130 x 50 x 87cms high.
£200-400



- 1348 **A Victorian carved walnut harlequin seven-piece salon suite**, comprising: a gentleman's button-back armchair, 68 x 82 x 104cms, a lady's easy chair, 55 x 72 x 97cms high, four side/dining chairs, 47 x 51 x 89cms high, and a chaise longue, 180 x 73 x 89cms, each with carved scroll and leaf detail and upholstered in a matching green floral plush material.
£300-500



- 1349 **An attractive Victorian inlaid burr walnut and ebonised bowfront credenza**, the recessed shaped and moulded top above an inlaid central panelled door enclosing shelves and flanked by concave glazed doors enclosing baize lined shelves, with carved detailing, on shaped base, 176 x 51 x 125cms high.
£300-500



- 1350 **An early 20th Century armchair by Howard & Sons**, on mahogany square tapering front legs and castors, stamped 'Howard & Sons Ltd., London', the inside of one back leg stamped '8116 9813, Howard & Sons Ltd., Berners St.', with cotton lining and later pink loose covers, width across arms at widest point 77cms, height 87cms, depth of seat 78cms approximately.
PROVENANCE: Sold by a descendant of the Walpole Family, originally in the family home of Heckfield Place, Hampshire, and thence by descent.
£1,500-2,500



- 1351 **Howard & Sons Ltd: two Ingleby armchairs**, upholstered in a tea green floral and 'H & S' block printed cretonne, each with labels to underside 'Howard & Sons Ltd, 31 Old Burlington Street, London.W1', one chair stamped on an inside rear leg '6843' the other chair stamped '6847' to inside of rear leg, the brass castors all stamped 'Howard & Sons Ltd, London', with original purchase receipt from 21st June 1935, 72 across arms x 92 deep overall x 86cms high.
£2,000-4,000



All lots are subject to a Buyer's Premium of 25% plus VAT (30% in total)

Christmas Country House & Fine Interiors Auction, 1st Dec, 2022 - 2nd Dec, 2022

- 1352 **Howard & Sons, London; an early 20th Century armchair**, in a cream cotton lining, square tapering front legs, splayed back legs one stamped '9204, on brass castors stamped 'Howard and Sons Ltd, London', 74 x 80 x 79cms high.
£400-600



- 1353 **A George III mahogany and fan inlaid chest**, the rectangular moulded top above two short and three long graduated drawers each with swan neck handles, on bracket feet, 100 x 51 x 99.5cms high.
£100-150



- 1354 **A Victorian Inlaid walnut games/work table**, the hinged folding swivel top opening to reveal a baize, inlaid and tooled leather surface with fitted sewing compartment under, on turned stem and four carved downswept legs with pad feet, 54 x 40 x 76cms high.
£80-140



- 1355 **An aesthetic movement occasional table (overpainted)**, canted square, on cross frame support, 48 x 75cms high.
£40-80



- 1356 **Skovby Mobel Fabrik A/S: a Danish rosewood sideboard and matching extending dining table**, the sideboard with rectangular top above a large cupboard with shelf and two doors flanked by a single cupboard with five sliding baize lined trays, 154 x 48 x 82cms; and an extending dining table, the shaped rectangular top with two spare leaves raised on rectangular section supports with stretcher and sledge feet, 165 (closed) 265 (extended) x 100.5 x 72cms high; and four associated beech wood dining chairs by Farstrup. (6)
Sold with Cites Certificate number: 623198/01.
£200-400



All lots are subject to a Buyer's Premium of 25% plus VAT (30% in total)

Christmas Country House & Fine Interiors Auction, 1st Dec, 2022 - 2nd Dec, 2022

- 1357 **A pair of stylish mid-Century Aframosia armchairs, Early 1960's British, upholstered in abstract grey material, 77 across arms x 56 x 89cms high.**
£150-250



- 1358 **Troeds, Bjarnum, Sweden: a rosewood sideboard and extending dining table, the sideboard with rectangular top above three cupboards, the doors with double oval handles on rectangular section legs, 184 x 46 x 74cms, the extending dining table, square section legs, 164 (closed) 254 (extended).**
(2)
Sold with Cites Certificate number 623021/01.
£300-500



- 1359 **A.H.McIntosh & Co Ltd of Kirkcaldy: a rare model rosewood sideboard, matching extending dining table, and four dining chairs, the sideboard with shaped rectangular top above three central drawers flanked by cupboards, each with fixed shelf, shaped end supports, 175 x 45 x 82cms high; the dining table with shaped rectangular top, single fold-out leaf, shaped legs, 126 (183 extended) 80 x 74cms high; and four dining chairs, 46 x 51 x 85cms high.**
Sold with Cites Certificate number: 622818/01.
£500-800



- 1360 **A George III mahogany octagonal wine cooler, the hinged to top opening to reveal lead lined interior (dividers removed), brass carrying handles, on square tapering legs with brass casters, 48 x 70cms high.**
£100-150



- 1361 **An early 19th Century mahogany tilt-action dining table, the rounded rectangular top raised on baluster stem with four leaf capped and fluted downswept legs, brass caps and castors, 141 x 106 x 72cms high.**
£100-200



Christmas Country House & Fine Interiors Auction, 1st Dec, 2022 - 2nd Dec, 2022

- 1362 **A George III style mahogany serpentine fronted chest**, circa 1920s, with thumb moulded edge, above two short and three long cock beaded drawers, blind fret cut stiles, over shaped bracket feet, 111 x 61 x 115cms high.
By repute, purchased at the sale of the contents of Belsay Castle, post-WWII.
£100-200

